



# **GOLD AND COMPANY, LLC**

**WWW.GOLDCOMMERCIAL.NET**

***Commercial Real Estate in the Baltimore Metropolitan Area***



## **5535 Harford Rd. Baltimore, MD 21214**

**Gold And  
Company, LLC**

**5601 Newbury St.  
Baltimore, MD 21209**

**For More Information:**

**Jim Chivers  
443.928.7522 cell  
jim@goldcommercial.net**

**www.goldcommercial.net**

- **+/- 2,100 sf Commercial Building FOR SALE**
- **Includes +/- 14 Off Street Parking Spaces**
- **C-1 Zoning—Baltimore City**
- **Located in the Heart of the Hamilton Business District**
- **60' Frontage on Harford Rd.**
- **Located Near the Expanding Morgan State**
- **Ideal for Owner-User (Medical, Retail, Office, Etc.)**
- **New Roof Installed**
- **2nd Floor Space**
- **Call For More Information**

This property offering is subject to change without notice. All information is deemed reliable but not guaranteed.

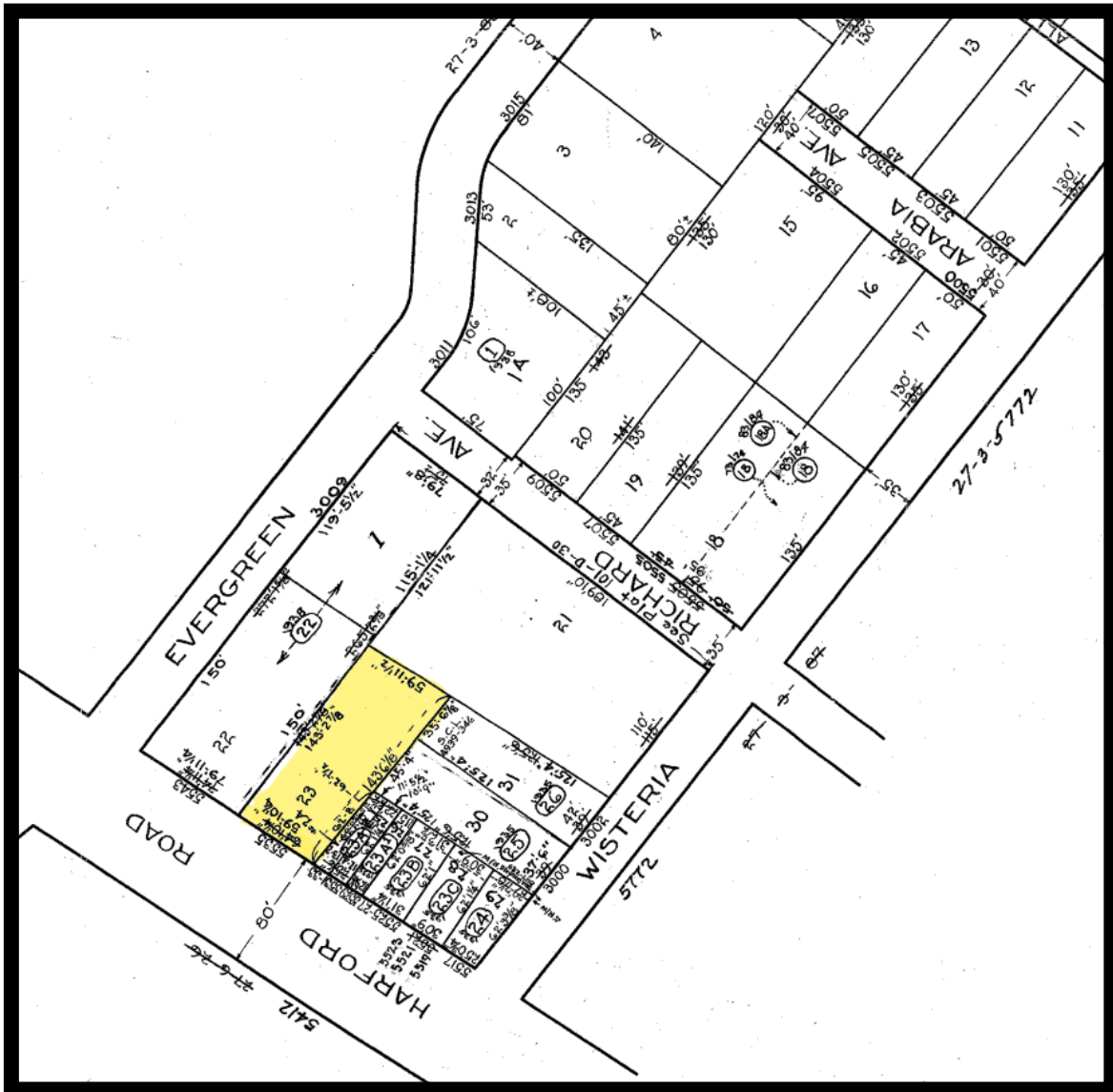


# Gold And Company

*Commercial Real Estate in the Baltimore Metropolitan Area*

**5535 Harford Rd. Baltimore, MD 21214**

## Block Map



**Jim Chivers**  
**Gold And Company, LLC**  
**5601 Newbury St.**  
**Baltimore, MD 21209**

**410.578.1300 (Office)**

**[www.goldcommercial.net](http://www.goldcommercial.net)**



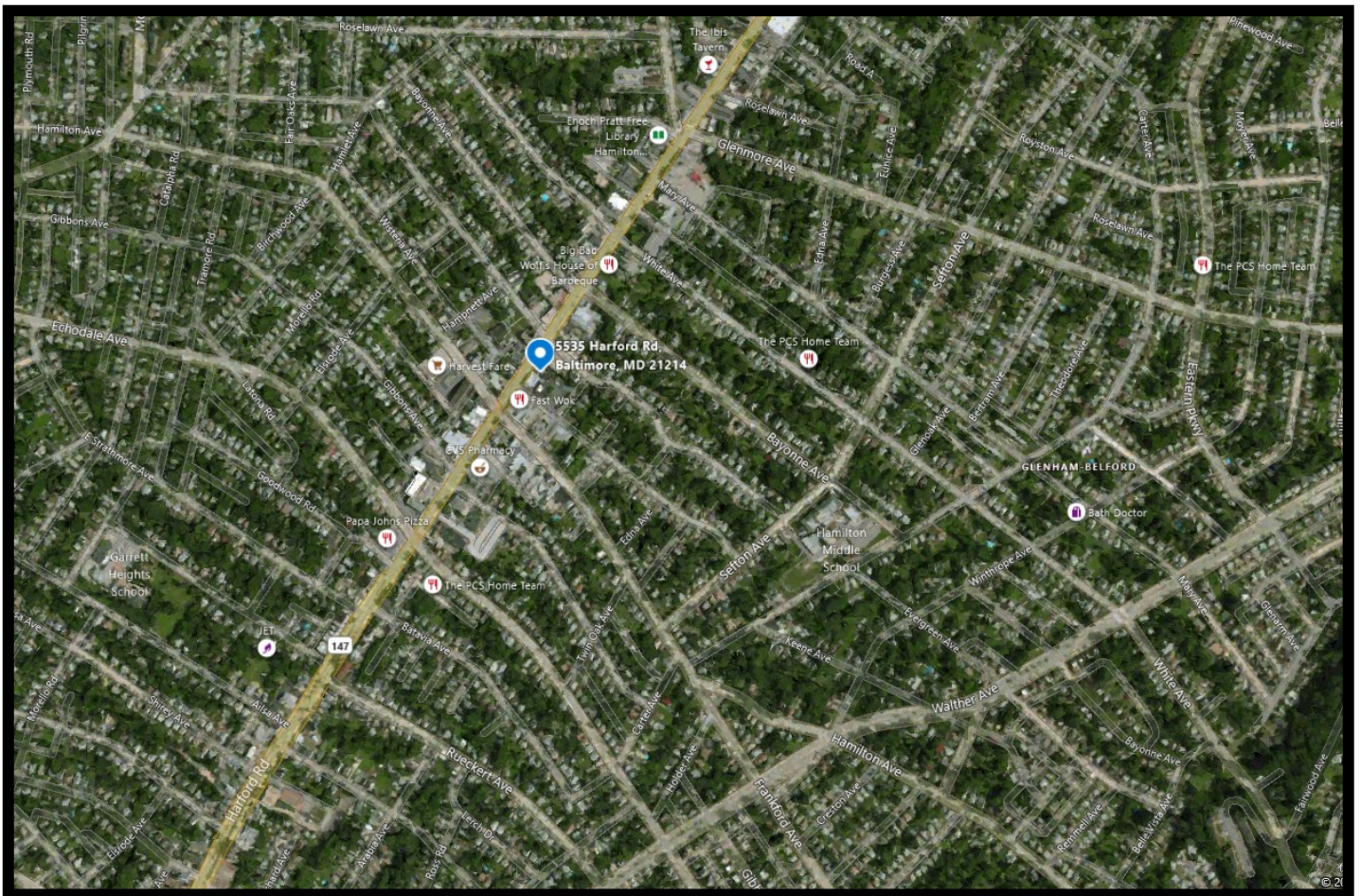


# Gold And Company

*Commercial Real Estate in the Baltimore Metropolitan Area*

**5535 Harford Rd. Baltimore, MD 21214**

## MAP



**Jim Chivers**  
**Gold And Company, LLC**  
**5601 Newbury St.**  
**Baltimore, MD 21209**

**410.578.1300 (Office)**

**[www.goldcommercial.net](http://www.goldcommercial.net)**