

Land for Sale
or Build-to-Suit

68.2 Acres
(Divisible)



22900 Center Road

Frankfort, Illinois - Will County

PROPERTY HIGHLIGHTS

- Parcel 1 19.42 Acres 19-09-34-300-013
- Parcel 2 27.42 Acres 19-09-34-300-011
- Parcel 3 6.5 Acres 19-09-34-300-014
- Parcel 4 5.0 Acres 19-09-34-300-015
- Parcel 5 5.0 Acres 19-09-34-300-016
- Parcel 6 5.0 Acres 19-09-34-300-017
- Total 68.2 Acres
- Zoning: I-1 (Industrial)
- Business friendly municipality
- Zoning allows for outdoor storage and/or trucking uses
- 2022 Real Estate Taxes: \$1,546 (Will County)
- Ability to demise site to accommodate user needs
- Favorable demographics with dense labor pool
- Sale Price: Subject to offer

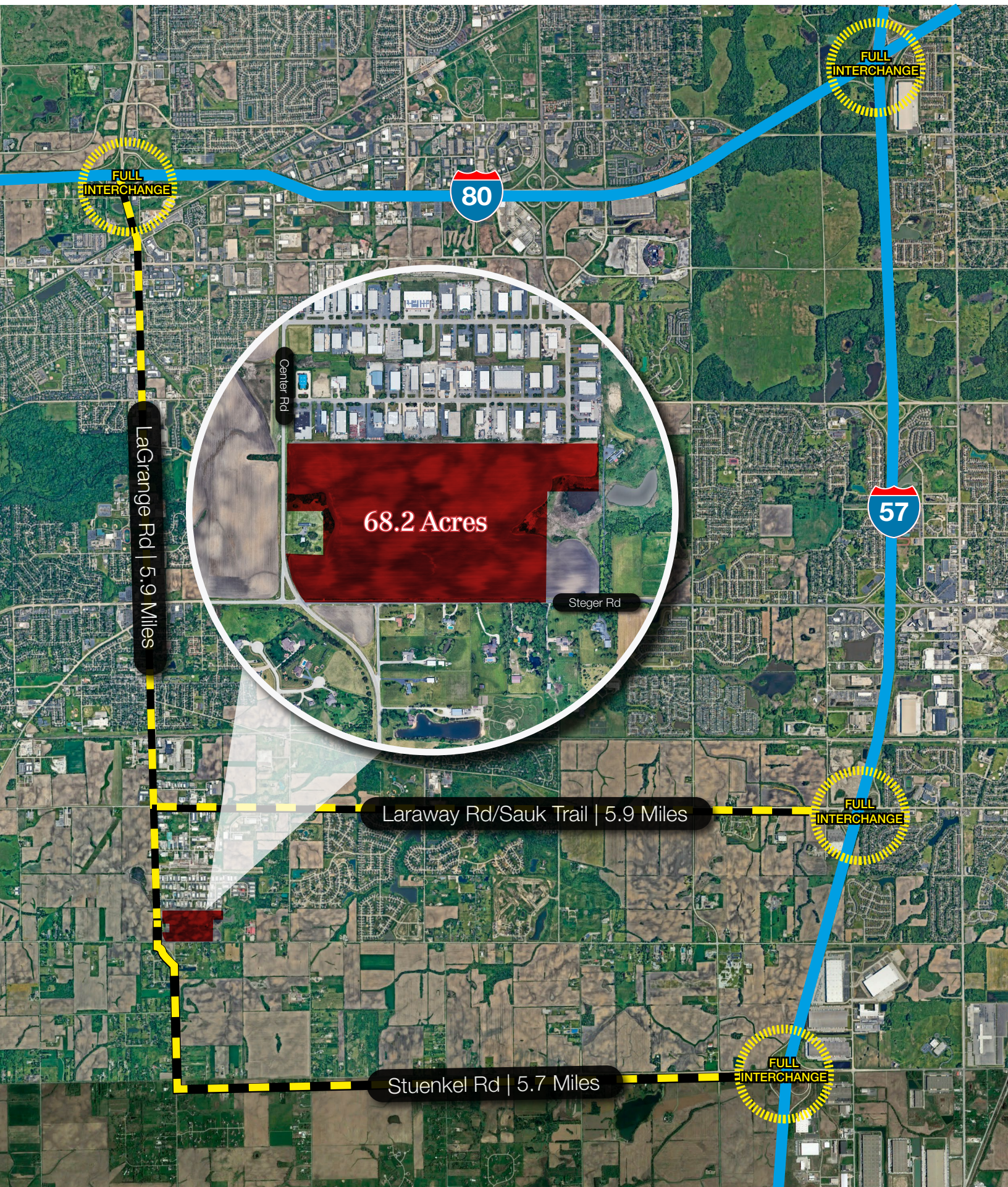
Contact

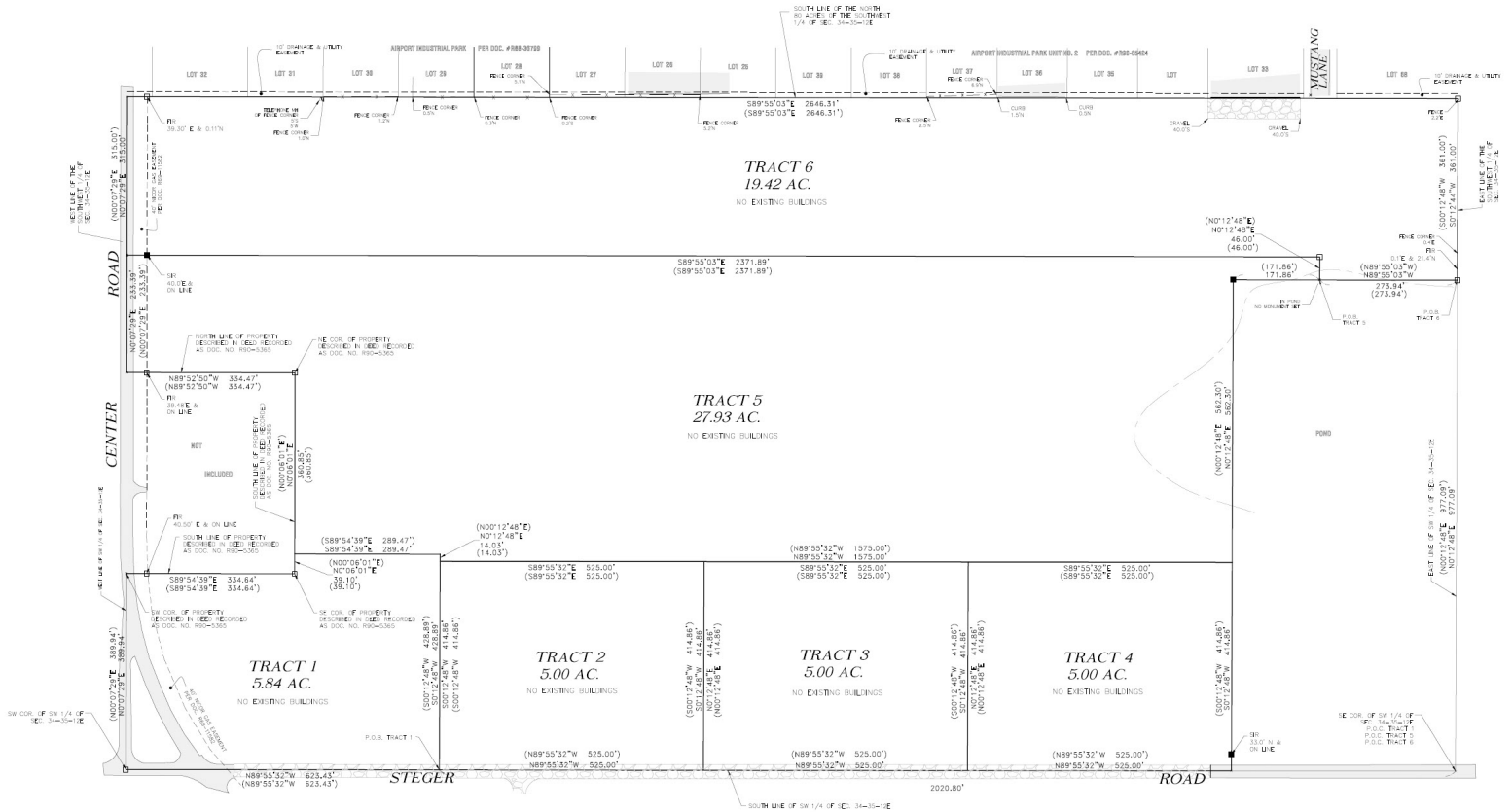
John Whitehead
+1 630 693 0643
jwhitehead@hiffman.com

Jack Brennan
+1 630 317 0754
jbrennan@hiffman.com

One Oakbrook Terrace
Suite 400
Oakbrook Terrace, Illinois 60181
+1 630 932 1234
hiffman.com

NO WARRANTY OR REPRESENTATION, EXPRESS OR IMPLIED, IS MADE AS TO THE ACCURACY OF THE INFORMATION CONTAINED HEREIN, AND THE SAME IS SUBMITTED SUBJECT TO ERRORS, OMISSIONS, CHANGE OF PRICE, RENTAL OR OTHER CONDITIONS, PRIOR SALE, LEASE OR FINANCING, OR WITHDRAWAL WITHOUT NOTICE, AND OF ANY SPECIAL LISTING CONDITIONS IMPOSED BY OUR PRINCIPALS NO WARRANTIES OR REPRESENTATIONS ARE MADE AS TO THE CONDITION OF THE PROPERTY OR ANY HAZARDS CONTAINED THEREIN ARE ANY TO BE IMPLIED.





2023 DEMOGRAPHICS

ESTIMATES BASED ON A 5-MILE RADIUS



72,082

TOTAL POPULATION



\$139,708

AVERAGE HOUSEHOLD INCOME



32,473

LABOR FORCE



42.0%

BACHELOR DEGREE+

KEY DISTANCES



5.9 MILES TO I-80



5.7 MILES TO I-57



15.4 MILES TO I-294/I-80



±29.6 MILES TO MIDWAY INT'L AIRPORT



±35.0 MILES TO DOWNTOWN CHICAGO

One Oakbrook Terrace
Suite 400
Oakbrook Terrace, Illinois 60181
+1 630 932 1234