

INDUSTRIAL CONDOS FOR SALE

COMMERCE INDUSTRIAL CENTER

27610 & 27640 COMMERCE CENTER DR. - TEMECULA, CA

1,512 SF - 3,373 SF - STARTING AT \$498,960



LEE & ASSOCIATES | TEMECULA VALLEY
25240 Hancock Avenue | Suite 100
Murrieta, CA 92562 | 951.445.4500
www.lee-associates.com | Corp ID #01048055

SAM ROBLES
951.445.4519
srobles@lee-associates.com
DRE #01982449

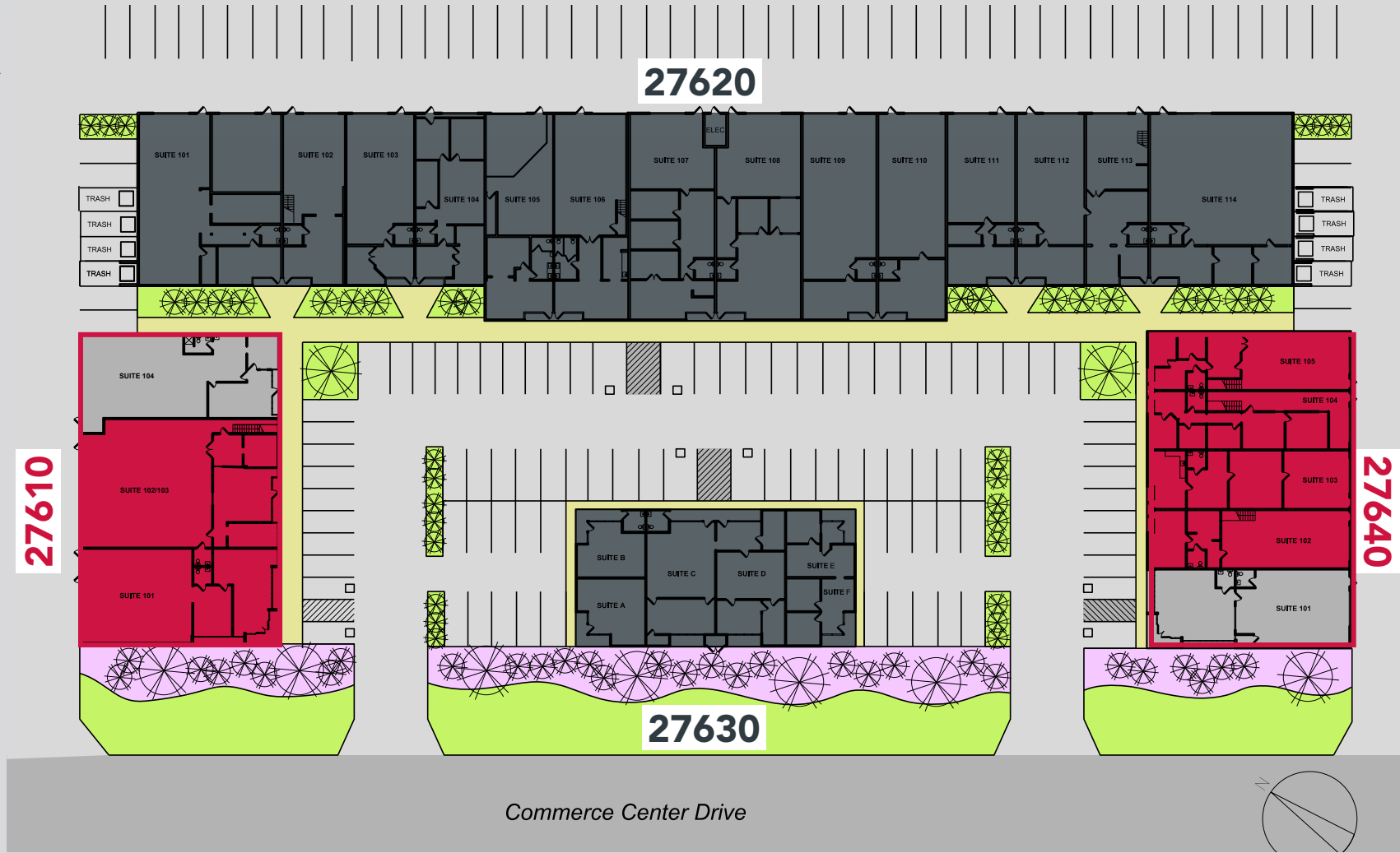
CHARLEY BLACK
951.445.4507
cblack@lee-associates.com
DRE #01000597

BEN WELLER
951.445.4561
bweller@lee-associates.com
DRE #02254521

No warranty or representation has been made to the accuracy of the foregoing information. Terms of sale or lease and availability are subject to change or withdrawal without notice.
Lee & Associates Commercial Real Estate Services, Inc. - Riverside. 25240 Hancock Avenue, Suite 100 - Murrieta, CA 92562 | Corporate ID# 01048055

AVAILABILITY & BUILDING FEATURES

- CENTRALLY LOCATED WITHIN THE TEMECULA BUSINESS DISTRICT
- NEW PAINT
- GREAT SIGNAGE
- NEW ROOF
- NEW ASPHALT
- ASSOCIATION DUES: \$0.25/SF
ASSOCIATION DUES COVERS: WATER, SEWER, LANDSCAPE, TRASH REMOVAL, MANAGEMENT, INSURANCE AND RESERVES.



AVAILABILITY			
27610 Commerce Center Drive (Industrial Only)			
Suite	(±)SF	Price	Description
101	±2,442	\$744,810	AVAILABLE 60 DAYS NOTICE
102/103	±3,373	\$961,305	AVAILABLE 60 DAYS NOTICE
104	±2,249	--	LEASED

Rev. 4/15/2026

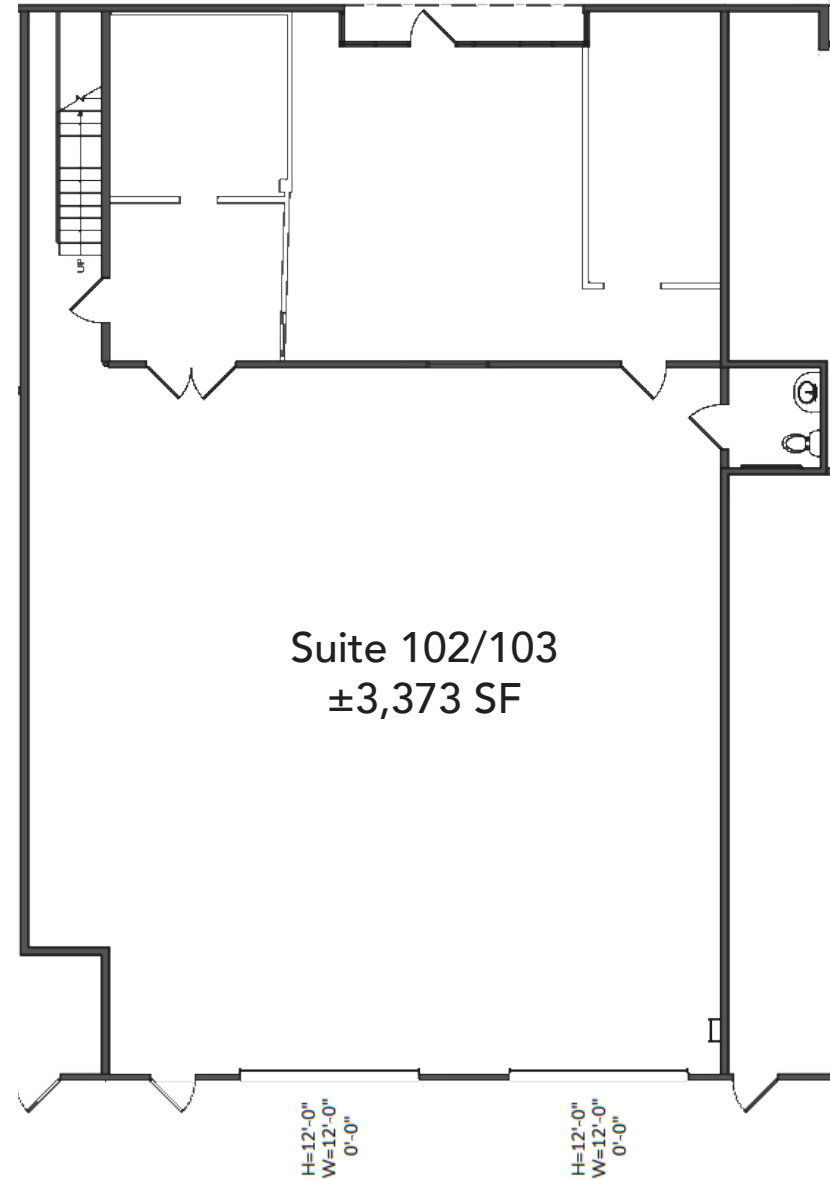
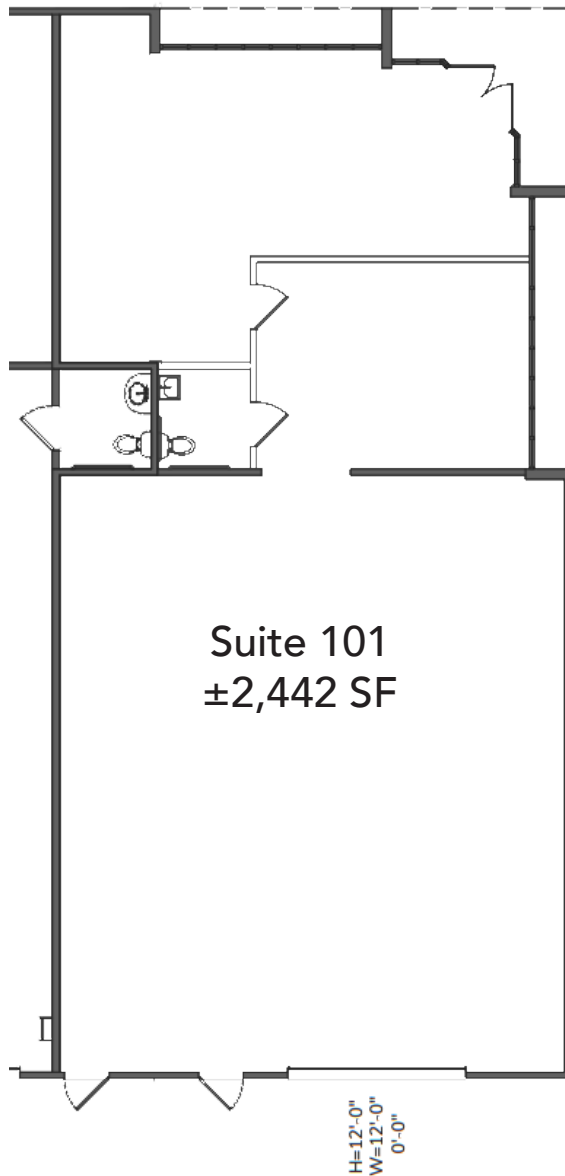
AVAILABILITY			
27640 Commerce Center Drive (Industrial Only)			
Suite	(±)SF	Price	Description
101	±2,016	--	LEASED
102	±1,512	\$498,960	AVAILABLE 6/30/26
103	±1,512	\$498,960	AVAILABLE 10/31/26
104	±1,512	\$498,960	AVAILABLE 60 DAYS NOTICE
105	±1,512	\$498,960	AVAILABLE 10/31/26

27610 & 27640 COMMERCE CENTER DR. - TEMECULA, CA

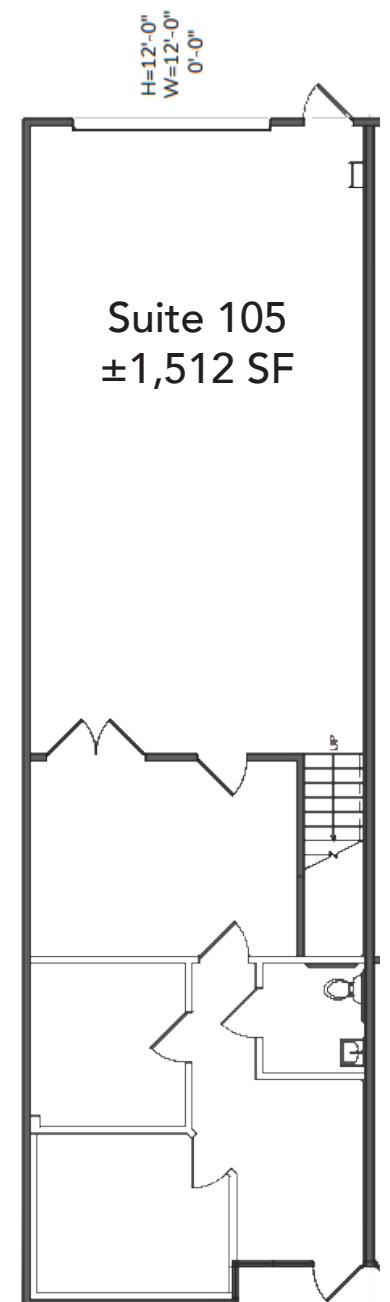
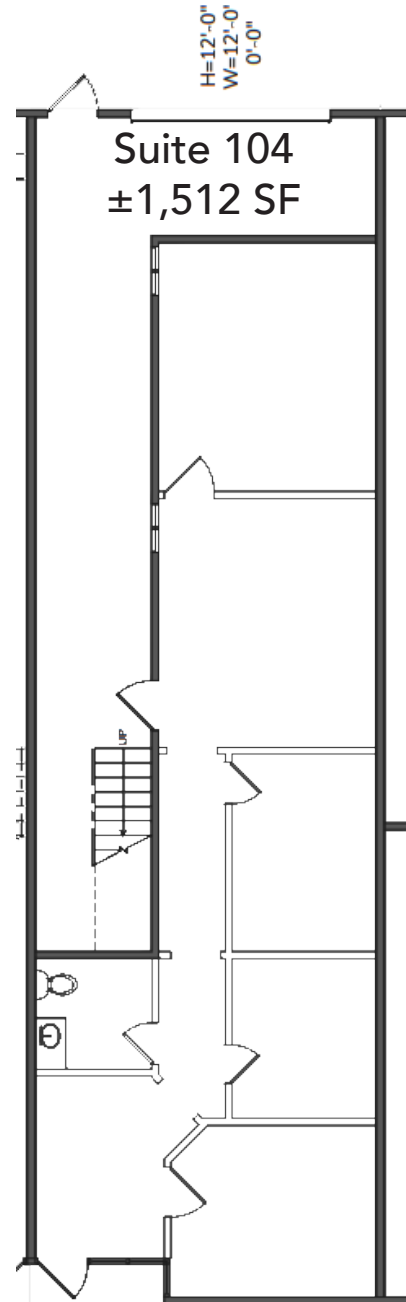
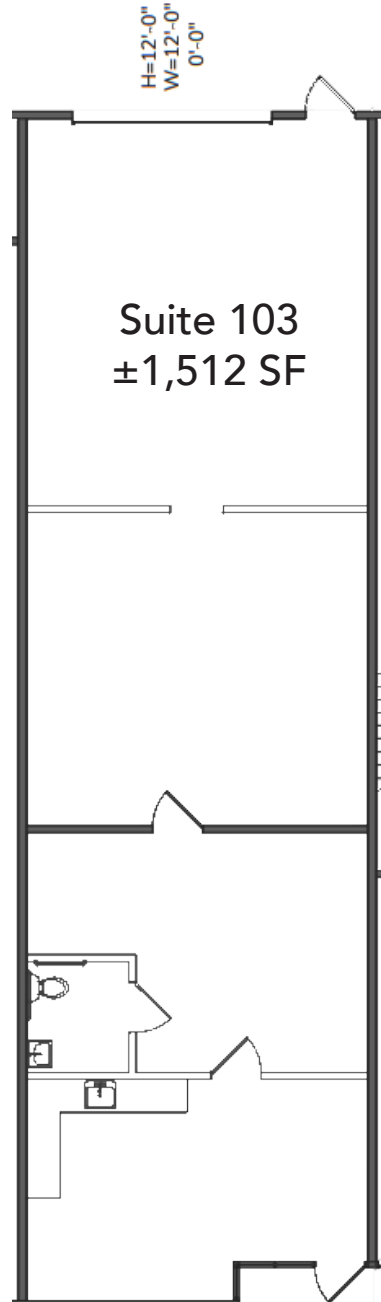
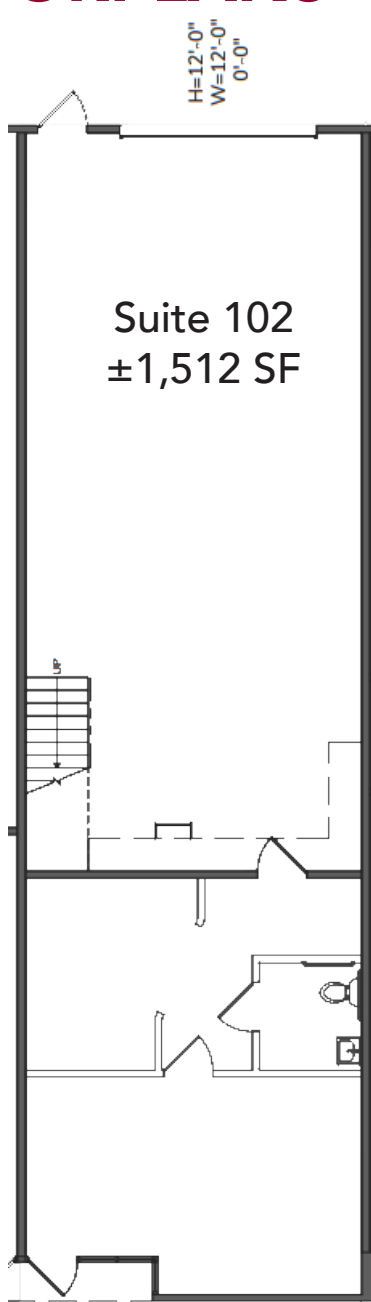
COMMERCE INDUSTRIAL CENTER

No warranty or representation has been made to the accuracy of the foregoing information. Terms of sale or lease and availability are subject to change or withdrawal without notice. Lee & Associates Commercial Real Estate Services, Inc. - Riverside, 25240 Hancock Avenue, Suite 100 - Murrieta, CA 92562 | Corporate ID# 01048055

27610 FLOORPLANS



27640 FLOORPLANS



PROPERTY AERIAL



RANCHO CALIFORNIA RD



VIA MONTEZUMA

27640 BLDG.

27610 BLDG.

JEFFERSON AVE

COMMERCE CENTER DR

27610 & 27640 COMMERCE CENTER DR. - TEMECULA, CA

COMMERCE INDUSTRIAL CENTER

COMMERCE INDUSTRIAL CENTER

27610-27640 COMMERCE CENTER DRIVE | TEMECULA, CA



46,764 SF BUSINESS PARK FEATURING INDUSTRIAL CONDOS FOR SALE

Ready to Own?

Condos starting at \$498,960.00.

Call today.

EXCLUSIVE AGENTS:



LEE & ASSOCIATES | TEMECULA VALLEY
25240 Hancock Avenue | Suite 100
Murrieta, CA 92562 | 951.445.4500
www.lee-associates.com | Corp ID #01048055

SAM ROBLES
951.445.4519
srobles@lee-associates.com
DRE #01982449

CHARLEY BLACK
951.445.4507
cblack@lee-associates.com
DRE #01000597

BEN WELLER
951.445.4561
bweller@lee-associates.com
DRE #02254521

No warranty or representation has been made to the accuracy of the foregoing information. Terms of sale or lease and availability are subject to change or withdrawal without notice.
Lee & Associates Commercial Real Estate Services, Inc. - Riverside. 25240 Hancock Avenue, Suite 100 - Murrieta, CA 92562 | Corporate ID# 01048055