



CAPITOL PARK 1ST FLOOR RETAIL

1250 Griswold St
Detroit, MI



Gary David - (313)590-5806 - gary@gdres.co



1250 GRISWOLD ST

2,808 SF of street-level retail in the heart of Capitol Park, just steps from the \$1.4 billion Hudson's Detroit development - a transformational project featuring GM's global headquarters, the Edition Hotel, luxury residences, and a curated mix of flagship retail and dining. This first-floor space at 1250 Griswold offers a clean, open layout with full street frontage and excellent visibility in one of the city's most walkable and activated corridors.

Surrounded by top destinations like Prime + Proper, San Morello, the Brakeman, and the Shinola Hotel, this location puts your brand at the center of Downtown Detroit's best action.



PROPERTY DETAILS

PROPERTY ADDRESS:	1250 Griswold St
BUILDING SIZE:	10,120 SF
1ST FLOOR SPACE:	2,808 SF
PARKING:	47 car parking lot adjacent to property + street parking
ASKING RENT:	\$43.00/SF NNN

SUMMARY

Gary David - (313)590-5806 - gary@gdres.co





SAN MORELLO

HUDSONS
DETROIT

EDITION



THE
HUDSON
CAFE
BREAKFAST & LUNCH

THE ALBERT
CAPITOL PARK

LA LANTERNA
PIZZERIA • BAR • 1956

DESSERT OASIS
COFFEE ROASTERS

BAD LUCK

AVALON
CAFE AND KITCHEN

THE STOTT

PRIME + PROPER

THE WESTIN
BOOK CADILLAC
DETROIT

State St

Capitol Park

Griswold St

THE FARWELL
Leila

EAT ORT
MARKET

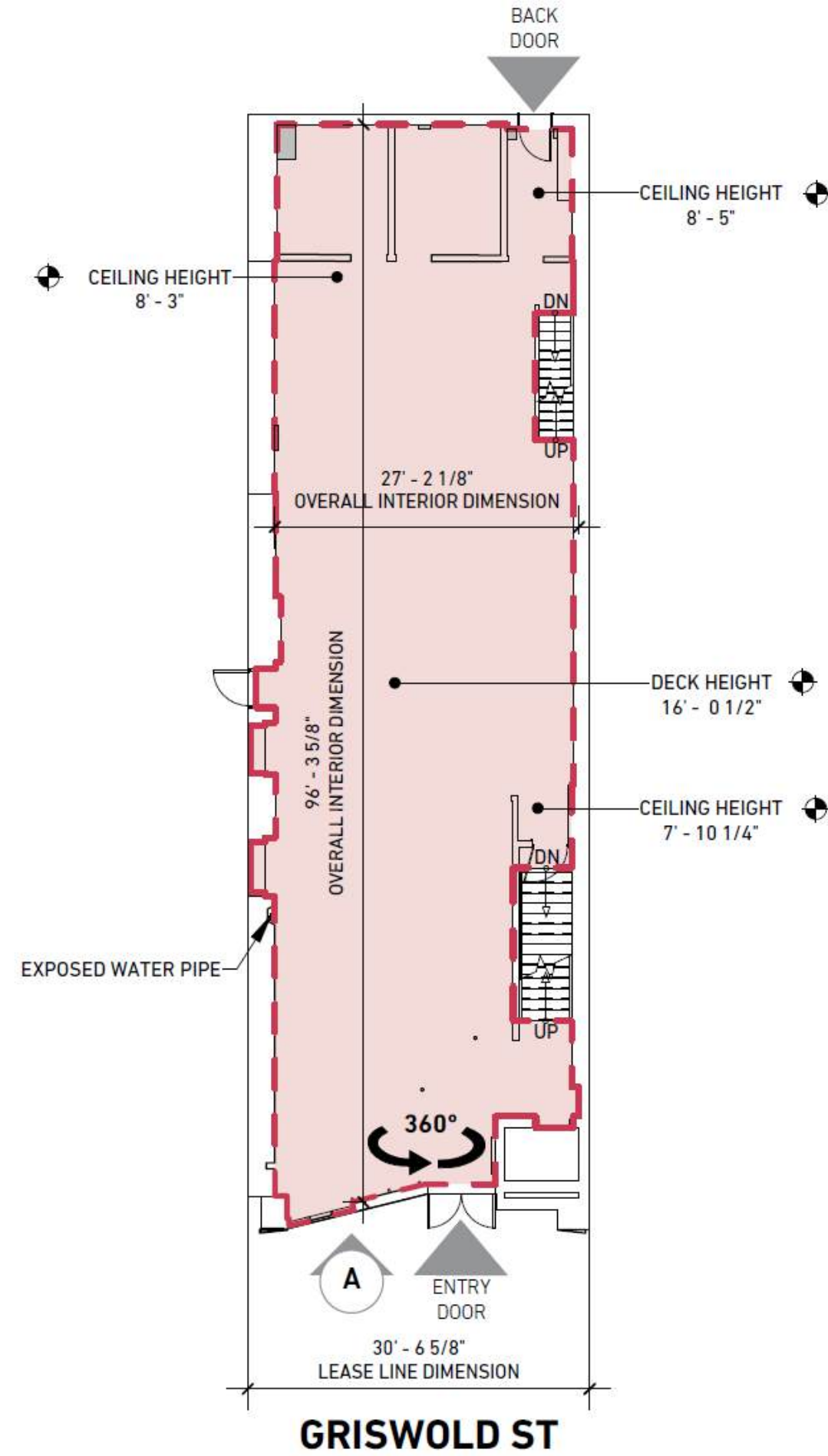
Parlay
DETROIT

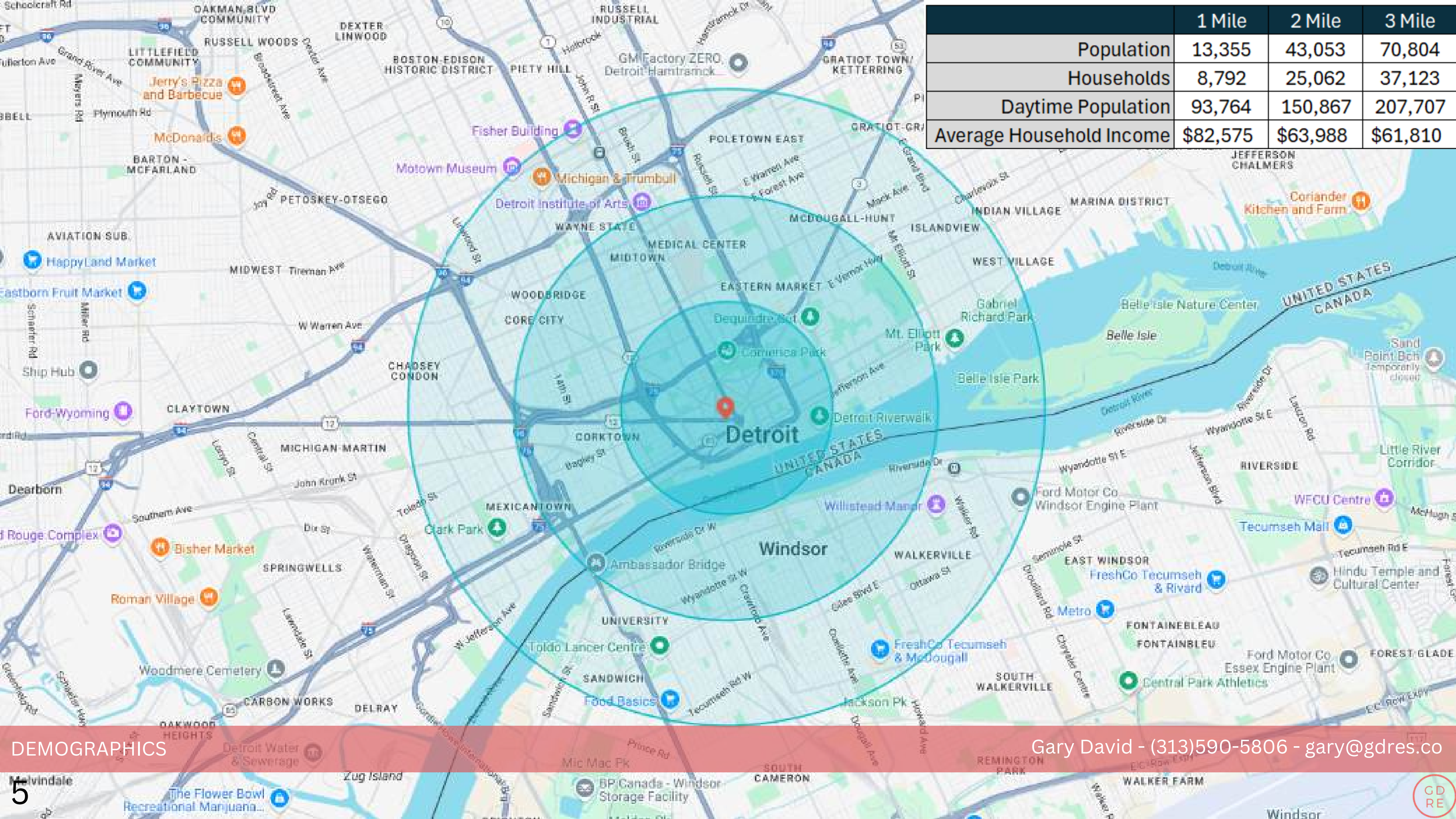
Grand River Ave

Washington Blvd

BOOK TOWER
SUPREME
DETROIT
HARON-SAN

KAMPER'S
ROOFTOP LOUNGE





	1 Mile	2 Mile	3 Mile
Population	13,355	43,053	70,804
Households	8,792	25,062	37,123
Daytime Population	93,764	150,867	207,707
Average Household Income	\$82,575	\$63,988	\$61,810

DEMOGRAPHICS

Gary David - (313)590-5806 - gary@gdres.co



Gary David - (313)590-5806 - gary@gdres.co