

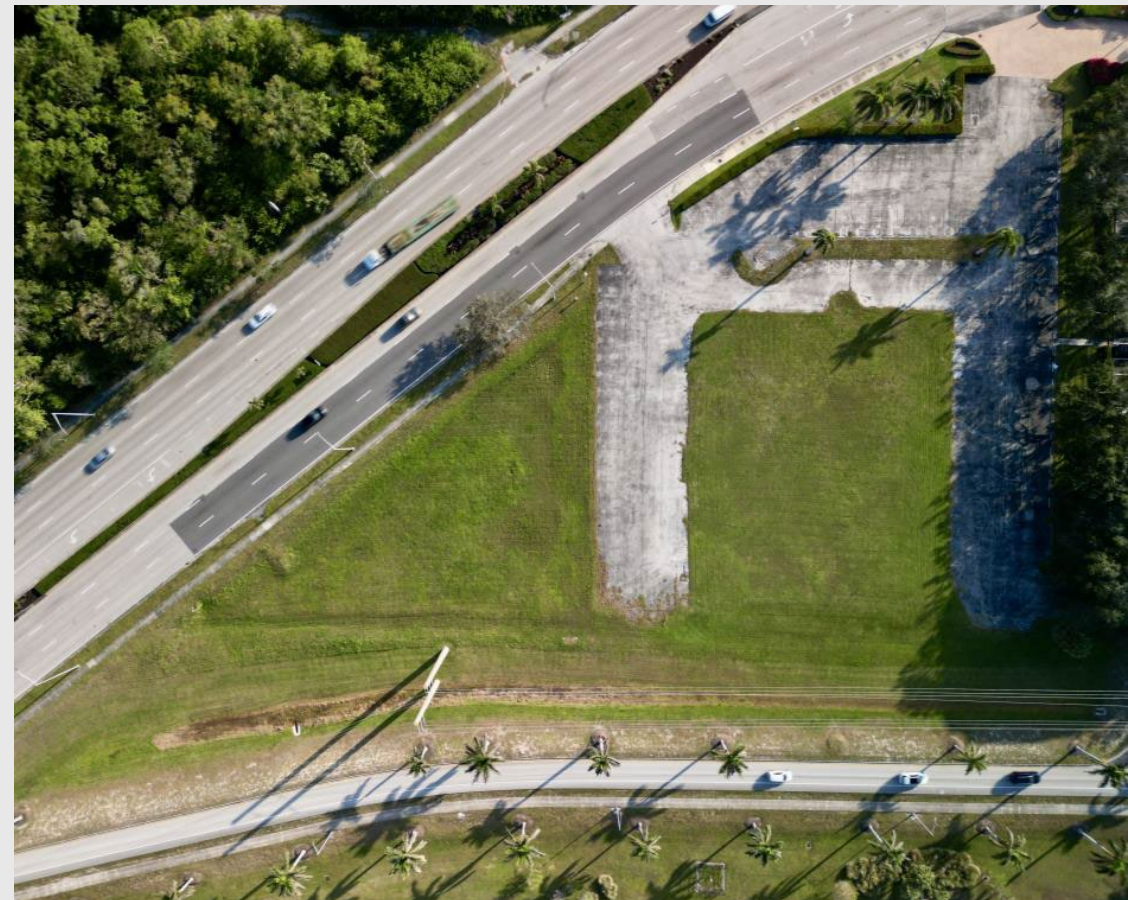
# 1465 & 1487 Golden Gate Parkway Naples, FL 34102

## Property Overview

This prime 2.41 acre combined lot at 1465 & 1487 Golden Gate Parkway is ideally located as an entry point into the city of Naples. It offers exceptional visibility along Golden Gate Parkway, which sees over 48,000 vehicles per day. It is within an Activity Center and has C-4 zoning which entitles the properties a wide range of commercial uses. The property is strategically located with access to major thoroughfares such as Goodlette-Frank Road, I-75, US-41, and Golden Gate Parkway ensuring seamless connectivity throughout Naples and the surrounding areas. This is an ideal opportunity for developers and businesses alike offering close proximity to Naples' pristine beaches, historic Fifth Avenue shopping and dining, and the affluent demographics of Naples.

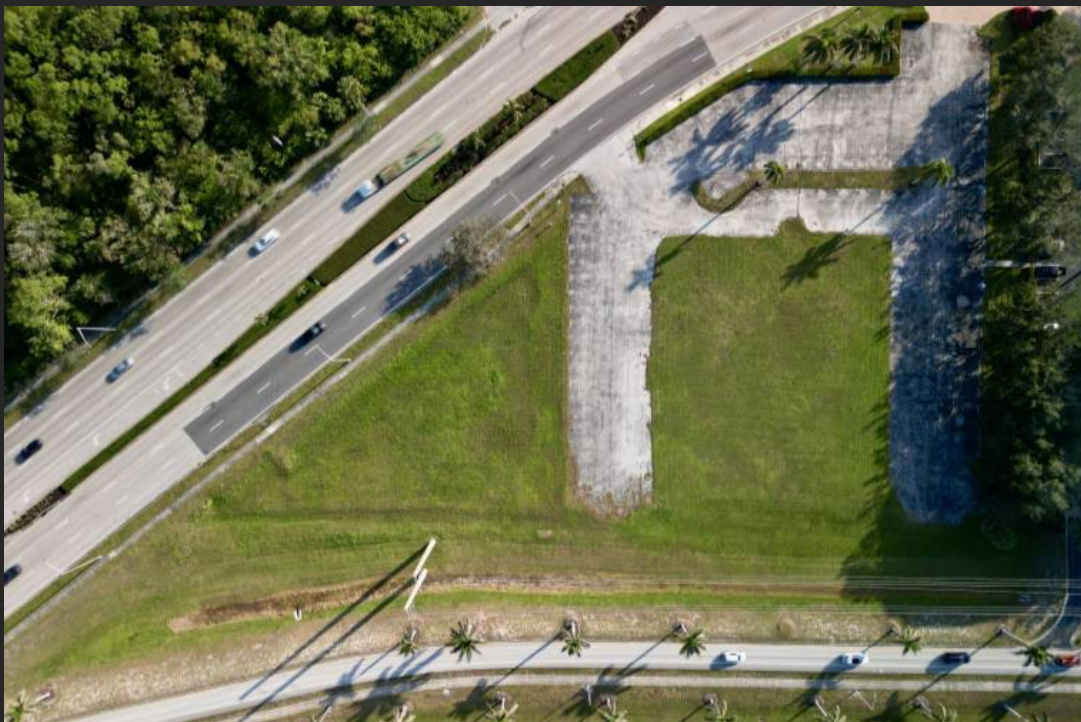
## Property Information

Property Size #1465:	1.80 Acres
Property Size #1487:	0.61 Acres
Property Type:	Land
Zoning:	C-4
Activity Center:	Yes - #14
Flood Plain:	AE
Ingress/Egress:	Golden Gate Parkway West Bound





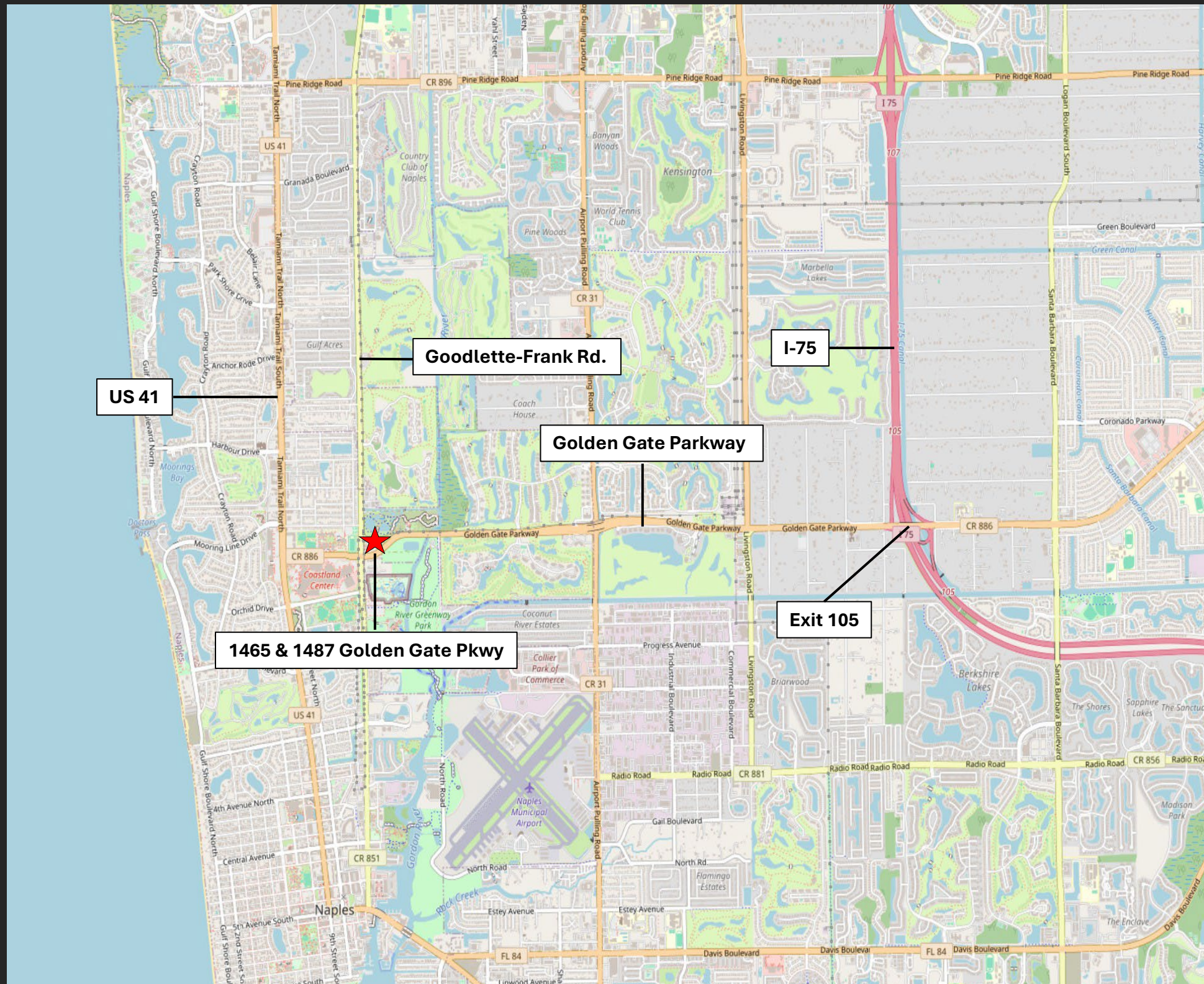
# 1465 & 1487 Golden Gate Parkway Site Photos



For More Information Contact Adam Arters at 239.298.5849



# 1465 & 1487 Golden Gate Pkwy Map



For More Information Contact Adam Arters at 239.298.5849



# 1465 & 1487 Golden Gate Pkwy Map

