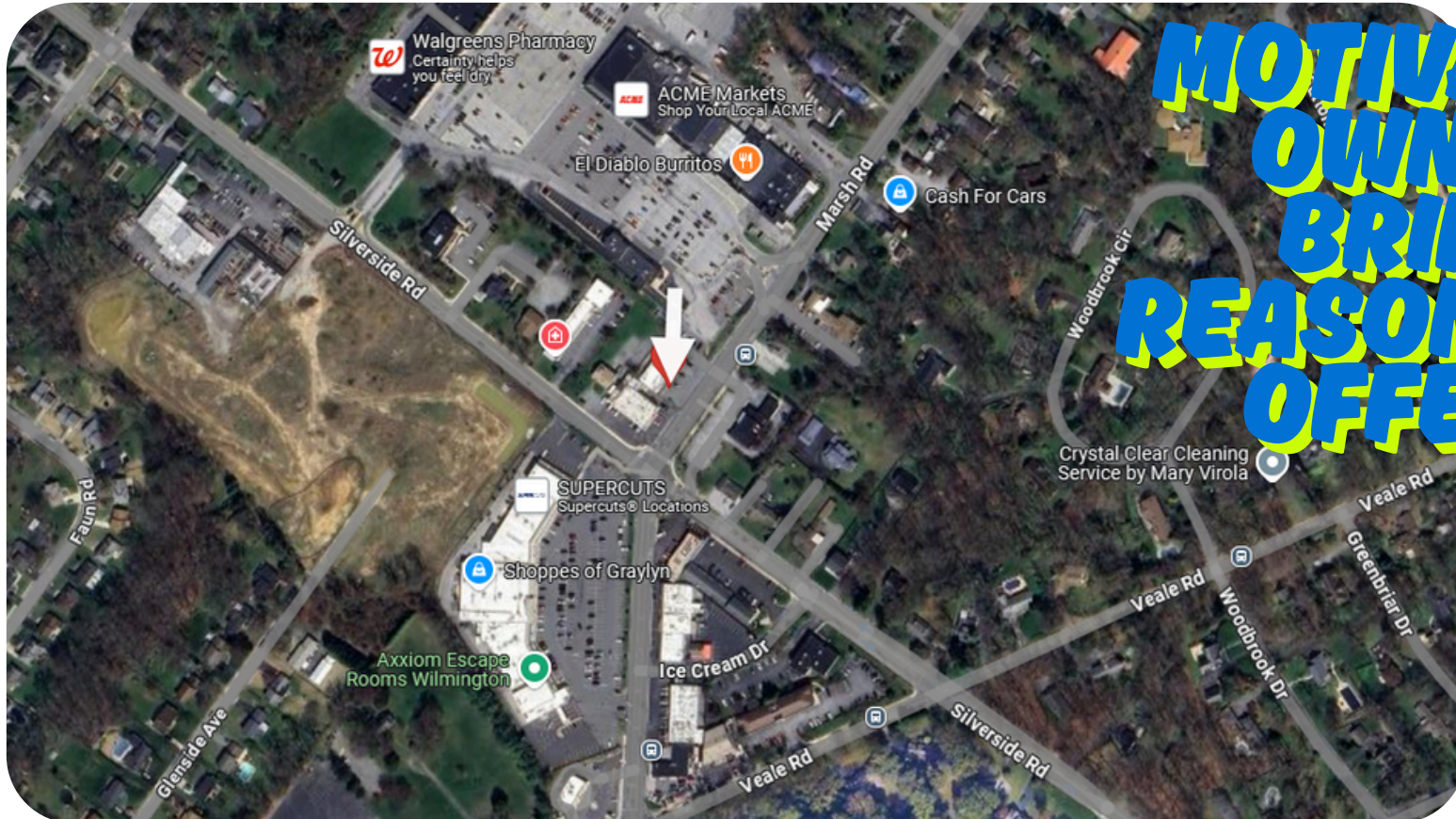




**1804 Marsh Road  
Wilmington, DE 19810  
+/- 1,000 square feet**

**Retail/Office  
FOR Lease  
\$25/sf + NNN**



**MOTIVATED  
OWNER  
BRING  
REASONABLE  
OFFERS**



The information presented is believed to be accurate, but the users must verify it for their own satisfaction. Price and availability are subject to change without prior notice. The Seller's/Owner's broker, any cooperating broker, and any salesperson working with either are representing the Seller's best interests and have fiduciary responsibilities to Seller, but are obligated to treat all parties fairly.

**For More Information Please Contact:**

Mitri S. Habash, CCIM, MICP  
302-218-3025  
Habash@HabashCommercial.com

**[www.HabashCommercial.com](http://www.HabashCommercial.com)**

**Sales | Leasing | Property Management | Business Brokerage**

**Habash Commercial Realty**

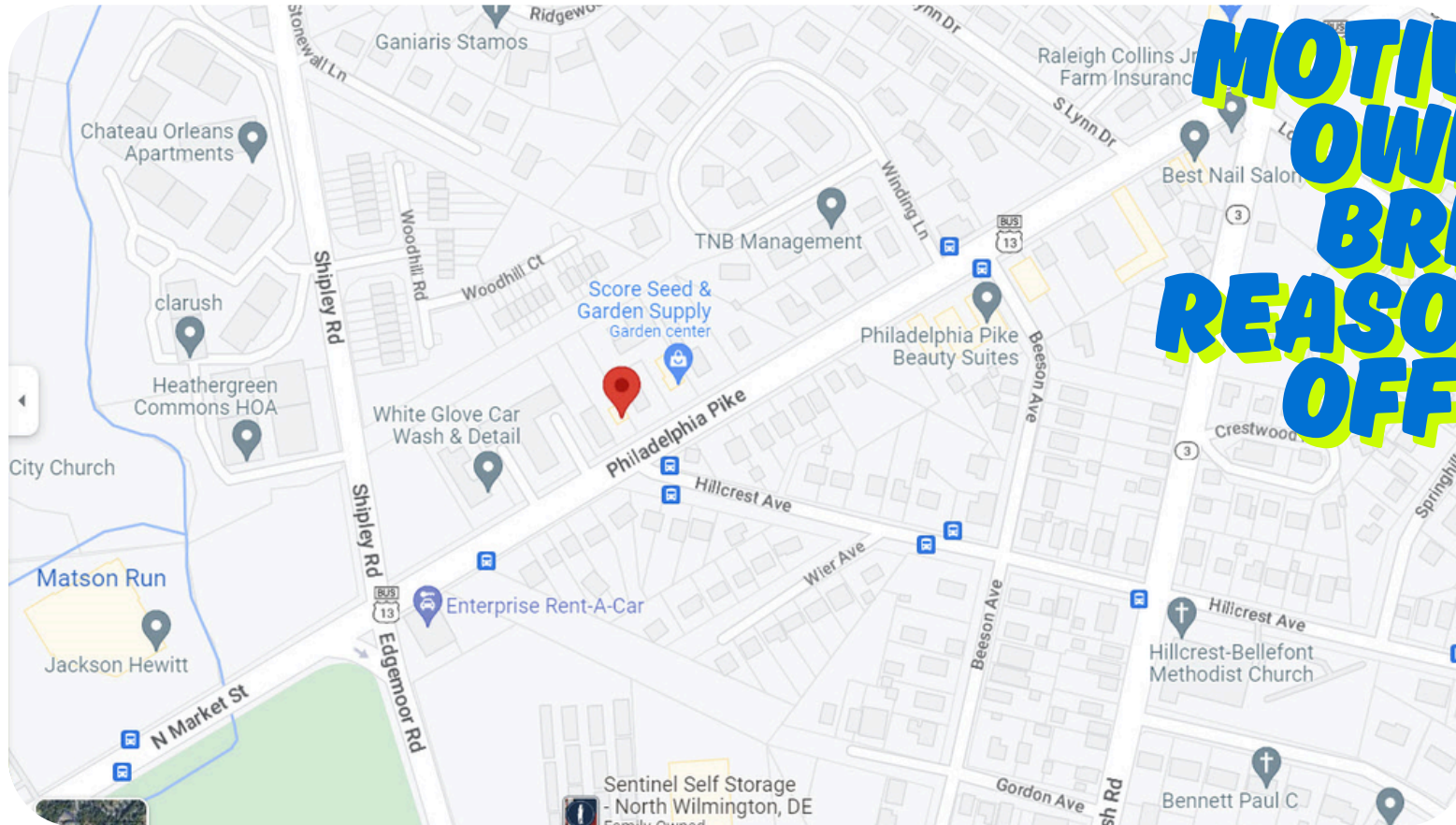
205 Philadelphia Pike,  
Wilmington, DE 19809  
(302) 544-9144





**1804 Marsh Road  
Wilmington, DE 19810  
+/- 1,000 square feet**

**Retail/Office  
FOR Lease  
\$25/sf + NNN**



**MOTIVATED  
OWNER  
BRING  
REASONABLE  
OFFERS**



The information presented is believed to be accurate, but the users must verify it for their own satisfaction. Price and availability are subject to change without prior notice. The Seller's/Owner's broker, any cooperating broker, and any salesperson working with either are representing the Seller's best interests and have fiduciary responsibilities to Seller, but are obligated to treat all parties fairly.

**For More Information Please Contact:**

**Mitri S. Habash, CCIM, MICP**  
302-218-3025  
Habash@HabashCommercial.com

**[www.HabashCommercial.com](http://www.HabashCommercial.com)**

**Sales | Leasing | Property Management | Business Brokerage**

**Habash Commercial Realty**

205 Philadelphia Pike,  
Wilmington, DE 19809  
(302) 544-9144





1804 Marsh Road  
Wilmington, DE 19810  
+/- 1,000 square feet

Retail/Office  
**FOR Lease**  
\$25/sf + NNN



The information presented is believed to be accurate, but the users must verify it for their own satisfaction. Price and availability are subject to change without prior notice. The Seller's/Owner's broker, any cooperating broker, and any salesperson working with either are representing the Seller's best interests and have fiduciary responsibilities to Seller, but are obligated to treat all parties fairly.

**For More Information Please Contact:**

Mitri S. Habash, CCIM, MICP  
302-218-3025  
Habash@HabashCommercial.com

**[www.HabashCommercial.com](http://www.HabashCommercial.com)**

Sales | Leasing | Property Management | Business Brokerage

**Habash Commercial Realty**

205 Philadelphia Pike,  
Wilmington, DE 19809  
(302) 544-9144



**1804 Marsh Road**  
**Wilmington, DE 19810**  
**+/- 1,000 square feet**

**Retail/Office**  
**FOR Lease**  
**\$25/sf + NNN**

### **Property Overview**

This Plaza is located at 1804 Marsh Road in Wilmington, DE is well situated neighborhood shopping center at the intersection of Marsh Road & Silverside Road directly next to Branmar Plaza, ACME Markets, Haldas Market, Wallgreens and much more. The center features a diverse mix of local tenants including: Sitaly To Go, Happy Fortune, and T L Nails.

Floating Demographic & Traffic Snapshot  
2024 Population:

- 1-mile radius: 9,573
- 3-mile radius: 82,866
- 5-mile radius: 171,446

Average Daily Traffic Count: 14,342 vehicles.

**MOTIVATED  
OWNER  
BRING  
OFFERS**

With excellent frontage and access, this high-visibility retail center serves as a go-to destination for nearby residential communities and benefits from consistent foot and vehicle traffic throughout the day.



The information presented is believed to be accurate, but the users must verify it for their own satisfaction. Price and availability are subject to change without prior notice. The Seller's/Owner's broker, any cooperating broker, and any salesperson working with either are representing the Seller's best interests and have fiduciary responsibilities to Seller, but are obligated to treat all parties fairly.

**For More Information Please Contact:**

Mitri S. Habash, CCIM, MICP  
302-218-3025  
Habash@HabashCommercial.com

**[www.HabashCommercial.com](http://www.HabashCommercial.com)**

**Sales | Leasing | Property Management | Business Brokerage**

**Habash Commercial Realty**

205 Philadelphia Pike,  
Wilmington, DE 19809  
(302) 544-9144



205 Philadelphia Pike  
Wilmington, DE 19809

Retail/Office  
**FOR Lease**



The information presented is believed to be accurate, but the users must verify it for their own satisfaction. Price and availability are subject to change without prior notice. The Seller's/Owner's broker, any cooperating broker, and any salesperson working with either are representing the Seller's best interests and have fiduciary responsibilities to Seller, but are obligated to treat all parties fairly.

**For More Information Please Contact:**

Mitri S. Habash, CCIM, MICP  
302-218-3025  
Habash@HabashCommercial.com

**[www.HabashCommercial.com](http://www.HabashCommercial.com)**

Sales | Leasing | Property Management | Business Brokerage

**Habash Commercial Realty**

205 Philadelphia Pike,  
Wilmington, DE 19809  
(302) 544-9144