

FLEX UNITS AVAILABLE FOR LEASE

4609

**±5,007 SF
AVAILABLE**

**4609
AUBURN BLVD**

SACRAMENTO, CA



**CUSHMAN &
WAKEFIELD**

BUILDING HIGHLIGHTS

9,072 SF

BUILDING
SIZE

1.02 AC

LOT
SIZE

120-208V/3P

POWER

MULTI

TENANCY

GRADE LEVEL

LOADING
DOORS

10'-15'

CLEAR
HEIGHT

AVAILABLE UNITS

Suite A

| | |
|----------|----------|
| TOTAL | 1,927 SF |
| OFFICE | 1,284 SF |
| GL DOORS | 1 GL |

Suite C

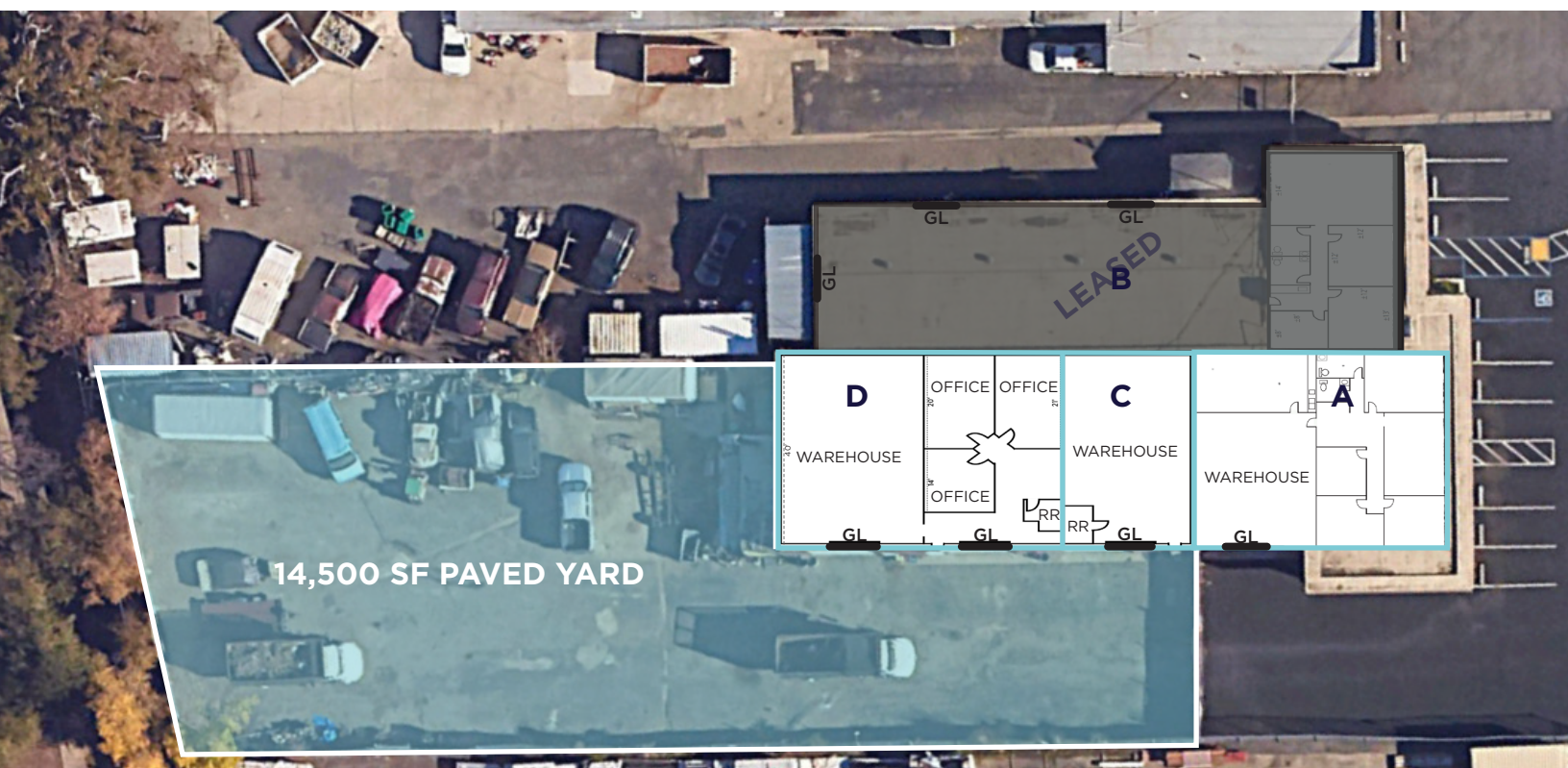
| | |
|----------|----------|
| TOTAL | 1,040 SF |
| GL DOORS | 1 GL |

Suite D

Available with 45 Days
Notice

| | |
|----------|-----------|
| TOTAL | 2,040 SF |
| OFFICE | 681 SF |
| GL DOORS | 2 GL |
| YARD | 14,500 SF |

*UNITS CAN BE COMBINED FOR
A TOTAL OF 5,007 SF





LOCATION

Contact Broker For Lease Rates

Matt Cologna

Executive Director

+1 916 288 4805

matt.cologna@cushwake.com

CA LIC # 01210309

400 Capitol Mall
Suite 1800
Sacramento, CA 95814

