

OFFICE SPACE | FOR LEASE

PACIFIC RIM POINTE

MULTI-TENANT OFFICE BUILDING IN OTAY MESA | SUITES RANGING FROM 500 - 4,000 SF



Zach Vogt
619.904.3450
zach@iredevelopment.com
Lic. 02167776



IRE DEVELOPMENT
EST 1986

9335 AIRWAY ROAD



PROPERTY FEATURES

- Outstanding Corner Location at Airway Road and Heinrich Hertz Dr.
- High Visibility Office Building
- Office Suites Starting at 541 SF and Up
- Restaurant on First Floor
- Excellent Street Frontage near the I-905 and 125



PACIFIC RIM POINTE

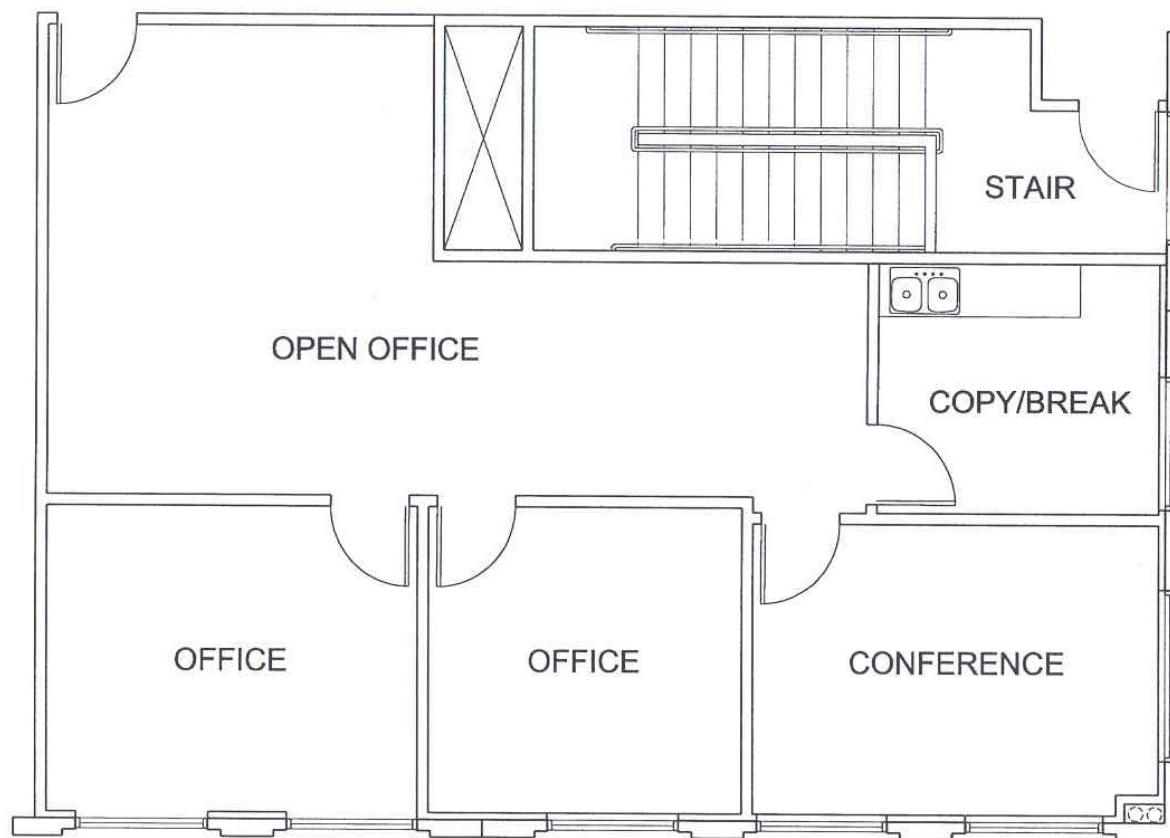


CURRENT AVAILABILITIES

SUITE #	SIZE (RSF)	2025 NNN (\$0.55/SF) LEASE RATE SF/MO	AVAILABLE DATE	FEATURES
212	1,409 SF	\$1.90 + NNN	NOW	Open Office, Two Private Offices, Conference Room, Break Room
105	2,302 SF	\$1.80 + NNN	NOW	4 Private Offices, Large Open Office, Conference Room, Break Room
203	2,371 SF	\$1.75 + NNN	NOW	Reception, 4 Private Offices, Open Office, Conference Room, Break Room
206	4,084 SF	\$1.60 + NNN	NOW	4 Private Offices, Large Open Office, Break Room, Conference Room

PACIFIC RIM POINTE

SUITE 212

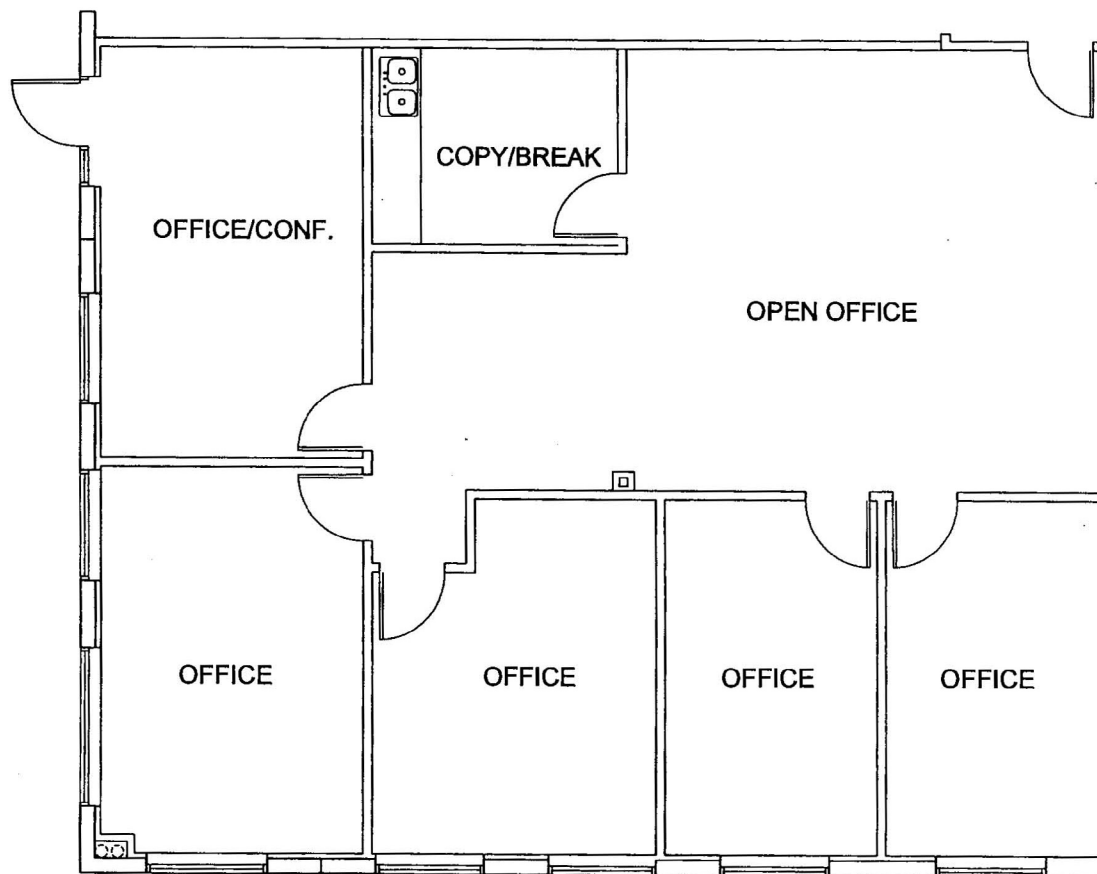


1,409 SF | \$1.90 + NNN | AVAILABLE NOW

Open Office, Two Private Offices, Conference Room, Break Room

PACIFIC RIM POINTE

SUITE 105

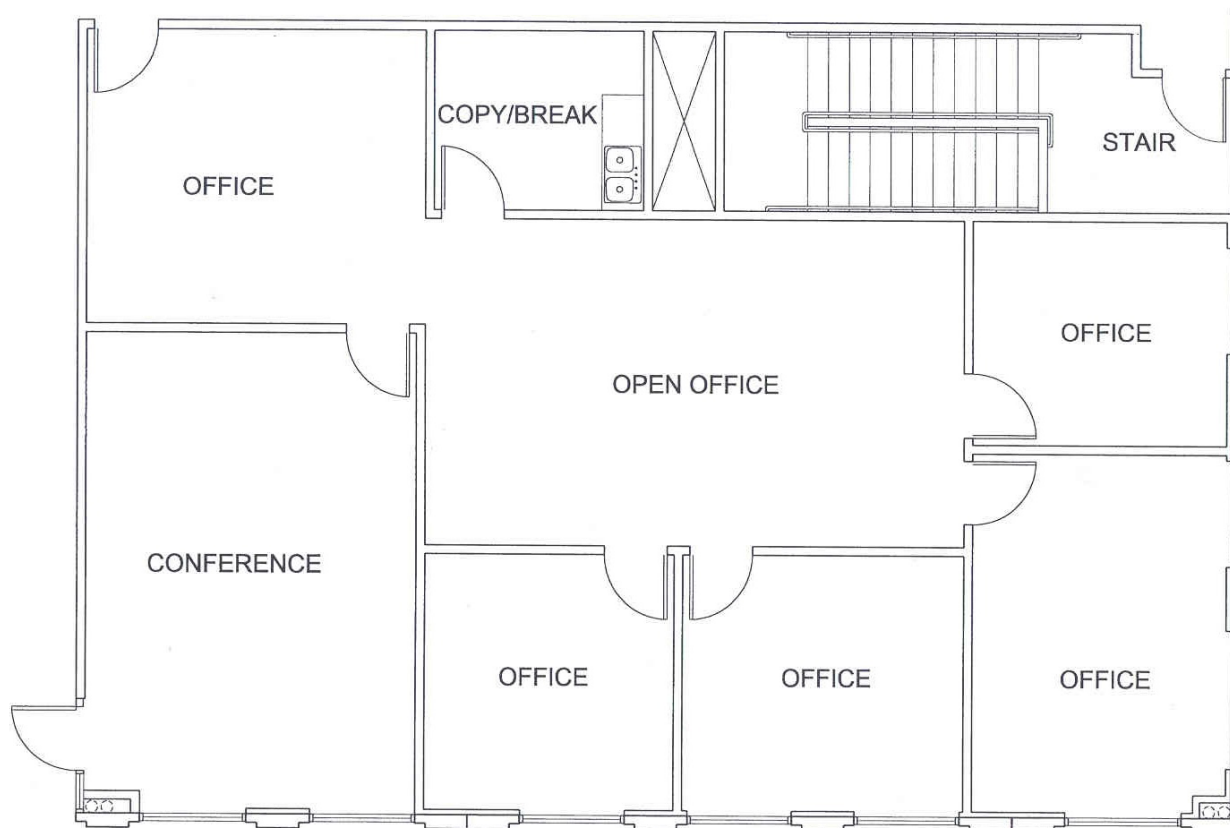


2,302 SF | \$1.80 + NNN | AVAILABLE NOW

4 Private Offices, Large Open Office, Conference Room, Break Room

PACIFIC RIM POINTE

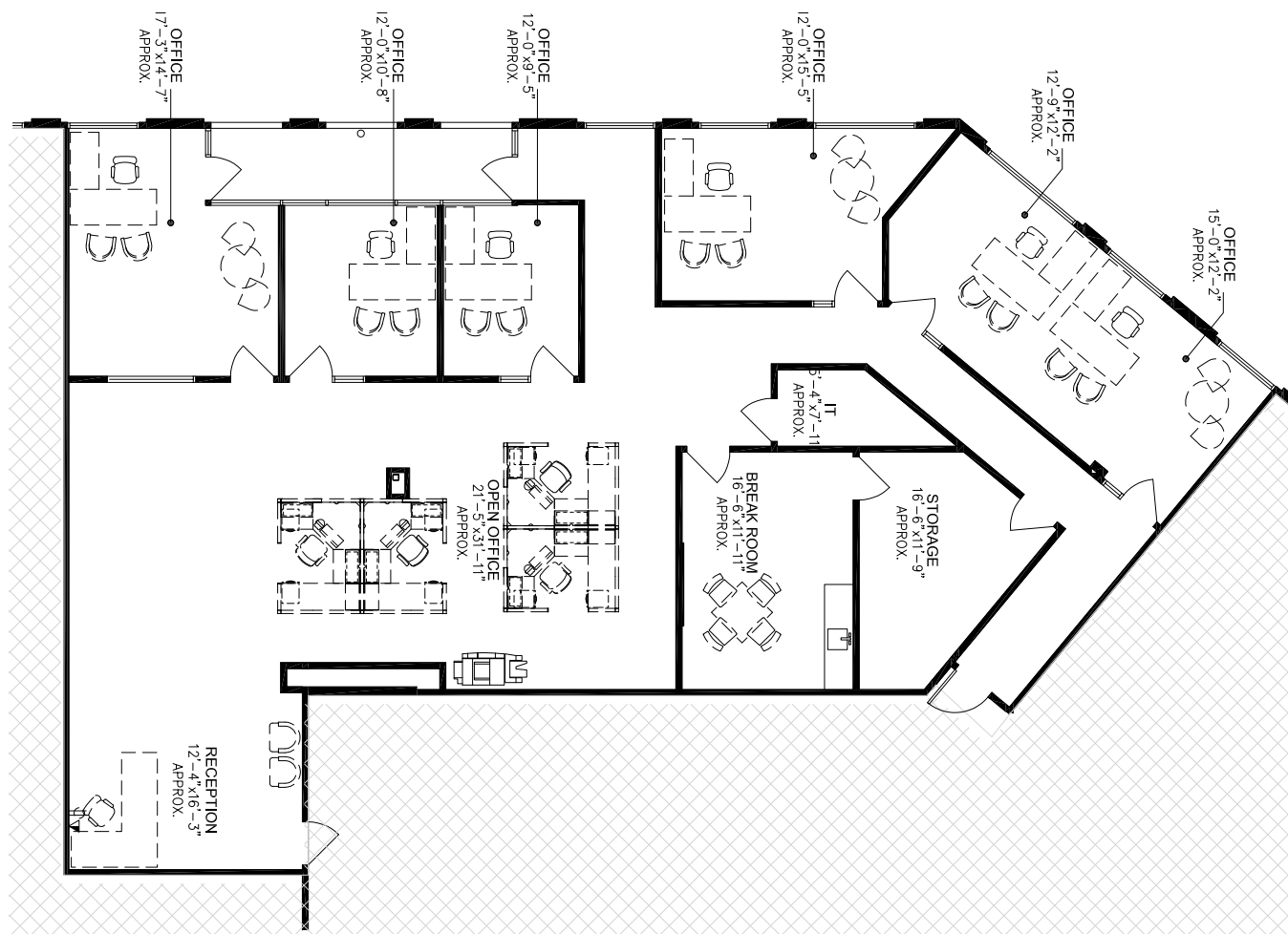
SUITE 203



2,371 SF | \$1.75 + NNN | AVAILABLE NOW

Reception, 4 Private Offices, Open Office, Conference Room, Break Room

SUITE 206



4,084 SF | \$1.60 + NNN | AVAILABLE NOW

4 Private Offices, Large Open Office, Break Room, Conference Room

PACIFIC RIM POINTE

9335
AIRWAY ROAD



IRE DEVELOPMENT
EST 1986

FOR MORE
INFORMATION
PLEASE CONTACT:

ZACH VOGT
619.904.3450
ZACH@IREDEVELOPMENT.COM
LIC. 02167776