

**MANALAPAN, NJ - MIXED-USE (RETAIL/OFFICE)**

285 GORDONS CORNER RD, MANALAPAN, NJ 07726

**FULLY EQUIPPED BAKERY ••• Available For Lease**



**OFFERING SUMMARY**

Available SF: Up To 3,500 SF  
 Lease Rate: Call for Details  
 Building Size: 12,000 SF

**NEIGHBORING TENANTS**



**PROPERTY OVERVIEW**

Available Immediately: New Expansion containing both office and retail space in Manalapan NJ.

**PROPERTY HIGHLIGHTS**

- New Expansion
- Available Now | RETAIL Space
- Available Now | OFFICE Space
- Abundant Parking
- Located at Signalized Intersection
- Very Busy Shopping Center
- NEWLY LEASED: Lu Bella Salon and Atlantic Physical Therapy

FOR MORE INFORMATION CONTACT:

**MARK HANDWERKER**  
 201.703.9700 x131  
 mhandwerker@thegoldsteingroup.com

Licensed Real Estate Broker | 45 EISENHOWER DRIVE | SUITE 246 | PARAMUS, NJ 07652

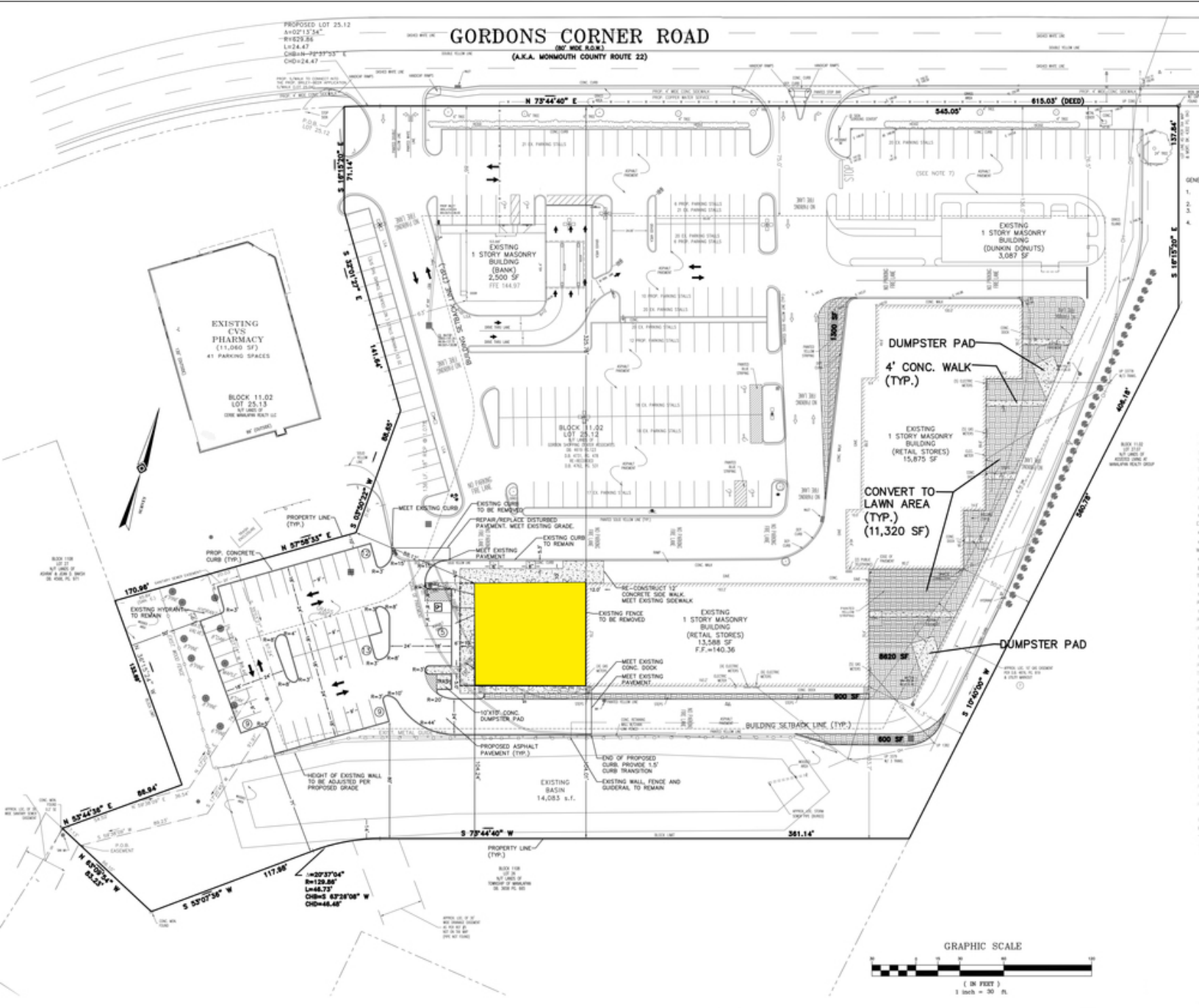
All information is from sources deemed reliable and is submitted subject to errors, omissions, change of price, terms, rental, prior sale and withdrawal without notice.



THEGOLDSTEINGROUP.COM

**MANALAPAN, NJ - MIXED-USE (RETAIL/OFFICE)**

285 GORDONS CORNER RD, MANALAPAN, NJ 07726



FOR MORE INFORMATION CONTACT:

**MARK HANDWERKER**  
201.703.9700 x131  
mhandwerker@thegoldsteingroup.com

Licensed Real Estate Broker | 45 EISENHOWER DRIVE | SUITE 246 | PARAMUS, NJ 07652

All information is from sources deemed reliable and is submitted subject to errors, omissions, change of price, terms, rental, prior sale and withdrawal without notice.



THEGOLDSTEINGROUP.COM

**MANALAPAN, NJ - MIXED-USE (RETAIL/OFFICE)**

285 GORDONS CORNER RD, MANALAPAN, NJ 07726



Map data ©2020 Imagery ©2020 , Maxar Technologies, USDA Farm Service Agency

FOR MORE INFORMATION CONTACT:

**MARK HANDWERKER**

201.703.9700 x131

mhandwerker@thegoldsteingroup.com

Licensed Real Estate Broker | 45 EISENHOWER DRIVE | SUITE 246 | PARAMUS, NJ 07652

All information is from sources deemed reliable and is submitted subject to errors, omissions, change of price, terms, rental, prior sale and withdrawal without notice.



THEGOLDSTEINGROUP.COM

**MANALAPAN, NJ - MIXED-USE (RETAIL/OFFICE)**

285 GORDONS CORNER RD, MANALAPAN, NJ 07726



FOR MORE INFORMATION CONTACT:

**MARK HANDWERKER**

201.703.9700 x131

mhandwerker@thegoldsteingroup.com

Licensed Real Estate Broker | 45 EISENHOWER DRIVE | SUITE 246 | PARAMUS, NJ 07652

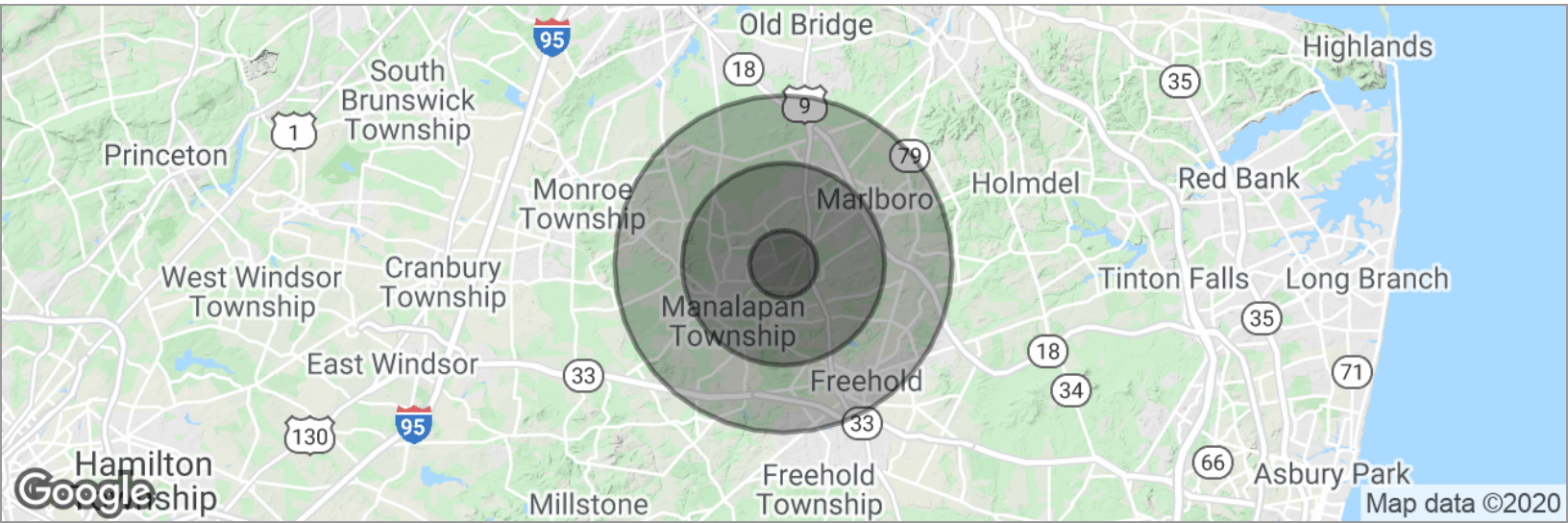
All information is from sources deemed reliable and is submitted subject to errors, omissions, change of price, terms, rental, prior sale and withdrawal without notice.



THEGOLDSTEINGROUP.COM

**MANALAPAN, NJ - MIXED-USE (RETAIL/OFFICE)**

285 GORDONS CORNER RD, MANALAPAN, NJ 07726



**POPULATION**

	<b>1 MILE</b>	<b>3 MILES</b>	<b>5 MILES</b>
Total population	6,569	50,629	113,976
Median age	41.5	41.9	40.2
Median age (Male)	39.3	41.0	39.4
Median age (Female)	42.6	42.6	40.8

**HOUSEHOLDS & INCOME**

	<b>1 MILE</b>	<b>3 MILES</b>	<b>5 MILES</b>
Total households	2,143	17,010	38,198
# of persons per HH	3.1	3.0	3.0
Average HH income	\$123,089	\$124,307	\$122,154
Average house value	\$510,800	\$513,496	\$484,360

\* Demographic data derived from 2010 US Census

FOR MORE INFORMATION CONTACT:

**MARK HANDWERKER**  
201.703.9700 x131  
mhandwerker@thegoldsteingroup.com



Licensed Real Estate Broker | 45 EISENHOWER DRIVE | SUITE 246 | PARAMUS, NJ 07652

THEGOLDSTEINGROUP.COM

All information is from sources deemed reliable and is submitted subject to errors, omissions, change of price, terms, rental, prior sale and withdrawal without notice.