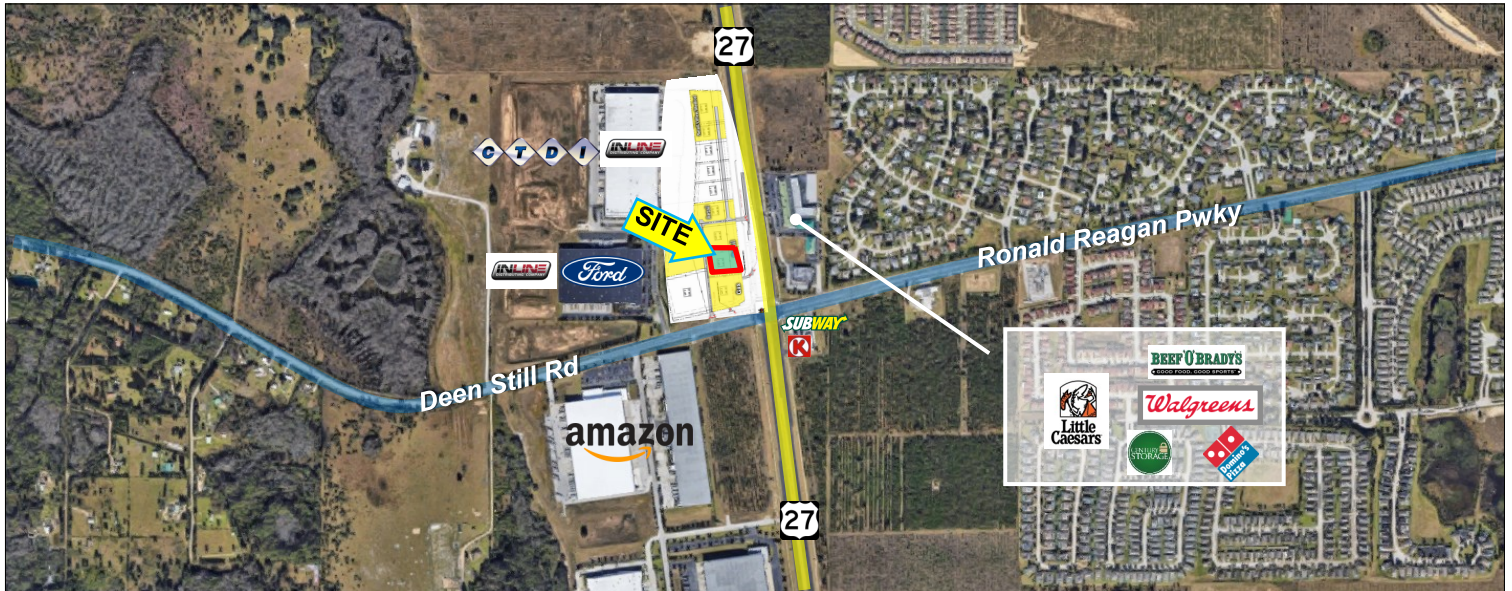


# Commercial Site— Lease, Ground Lease, or Build to Suit

## Davenport, FL

REAL PROPERTY SPECIALISTS, INC.  
Appraisers • Brokers • Consultants



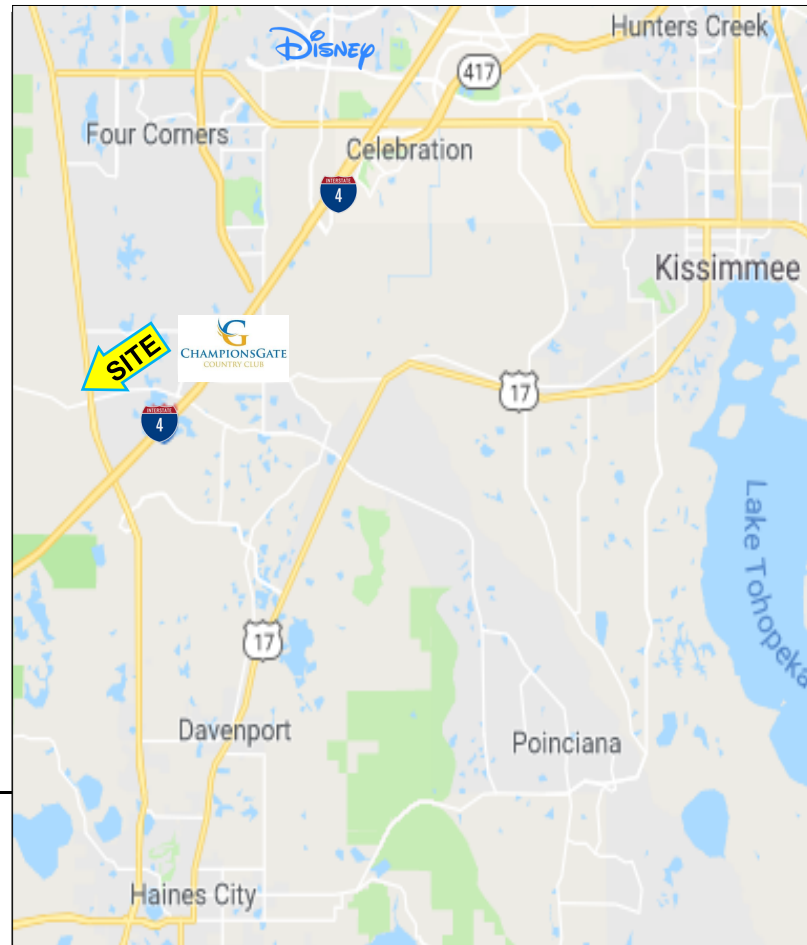
## 200 Deen Still Rd, Davenport, FL 33897

### Property Highlights

- Exceptional Location, located directly at the intersection of Highway 27 and Ronald Reagan Pkwy (aka Deen Still Rd)
- Surrounded by industry giant's warehouses (Amazon, Ford, InLine, CTDI, Etc.)
- Fantastic Access and Exposure along US HWY 27 as well as easy access to Interstate 4
- Nearby Posner Park Commons which is home to major retailers such as: DICK's Sporting goods, PetSmart, GNC, ROSS, Hobby Lobby, Marshall's, Home Goods, and more.
- Endcap, inline, and free standing opportunities

**Traffic Counts:** 33,000 AADT ±

Demographics	2mile	5mile	10mile
Population (2022)	15,935	67,262	189,700
Population (2027)	19,641	82,620	231,733
Average HH Income	\$78,242	\$75,640	\$75,752

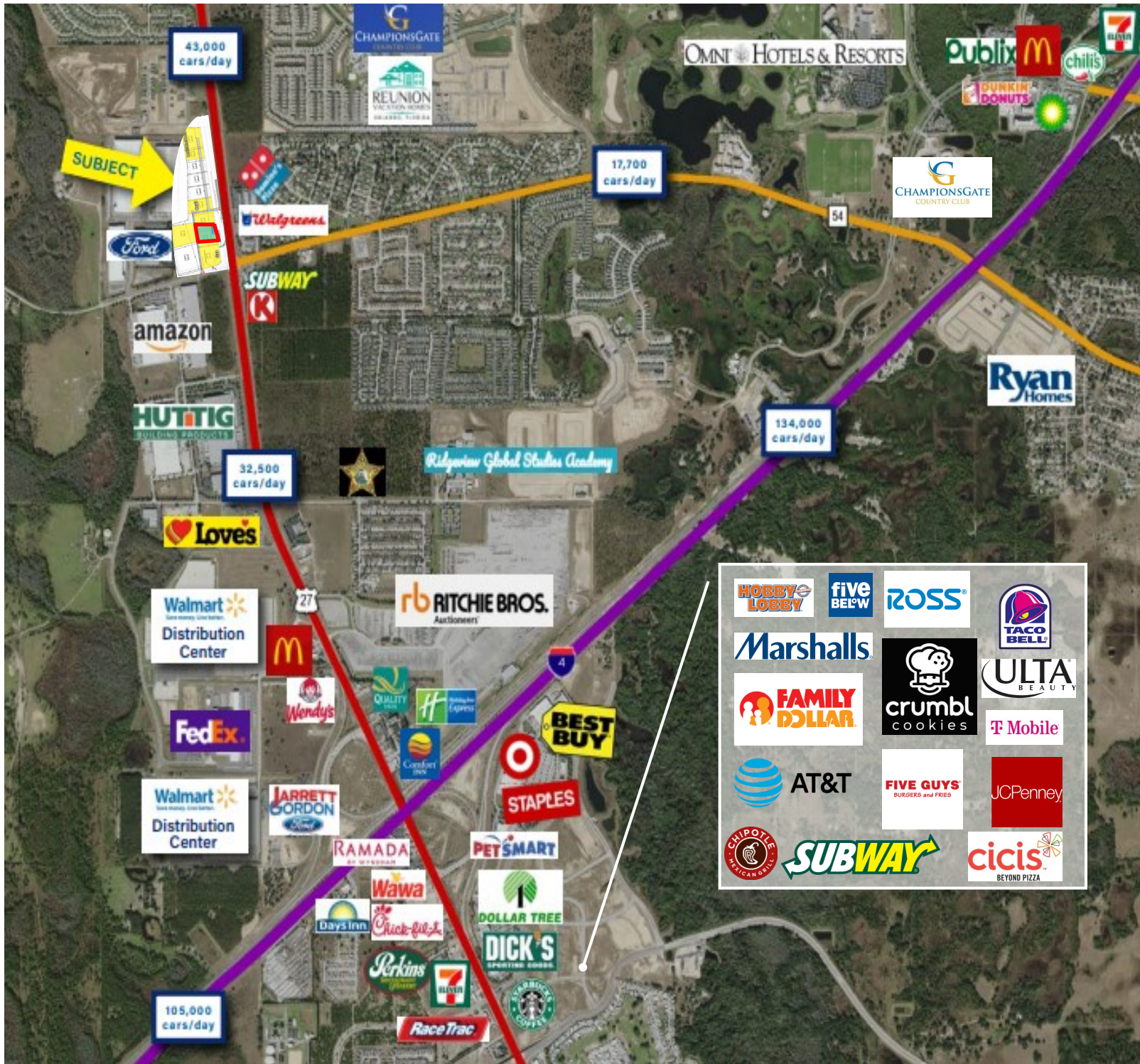




**Available For Lease**

**Davenport, FL**

REAL PROPERTY SPECIALISTS, INC.  
Appraisers • Brokers • Consultants



REAL PROPERTY SPECIALISTS, INC.  
Appraisers • Brokers • Consultants

**For More Information Call 407.812.8000**  
[www.realpropertyspecialists.com](http://www.realpropertyspecialists.com)

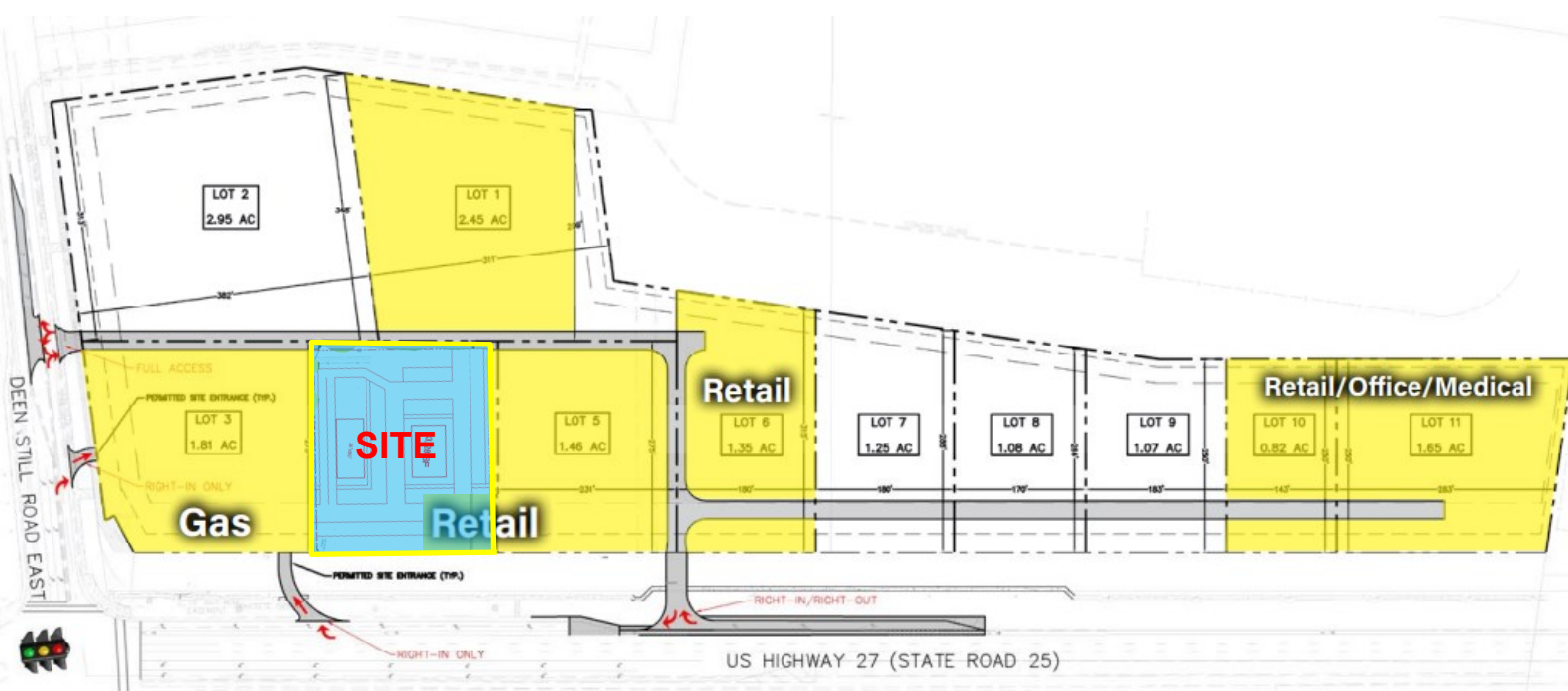


**Available For Lease**

**Davenport, FL**

**REAL PROPERTY SPECIALISTS, INC.**  
Appraisers • Brokers • Consultants

**Site Plan**



**REAL PROPERTY SPECIALISTS, INC.**  
Appraisers • Brokers • Consultants

**For More Information Call 407.812.8000**

[www.realpropertyspecialists.com](http://www.realpropertyspecialists.com)