

M E R I D I A N

147 S. CHERRY STREET, SUITE 200 | WINSTON-SALEM, NC 27101 | P 336.722.1986 | F 336.723.3173 | MERIDIANREALTY.COM

Investment Retail / Flex

8151 North Point Blvd.
Winston-Salem, NC 27106



PRICE

\$1,200,000



ANNUAL
RENT

\$96,000



CAP RATE

8.00%

For more information:

Charlie H. Fulk, CCIM
Cfulk@meridianrealty.com
336.480.2089

FOR SALE
Contact agent for details

WWW.MERIDIANREALTY.COM

INVESTMENT HIGHLIGHTS

- **Asking price: \$1,200,000**, offering an attractive entry point for investors seeking stable cash flow and below replacement cost **at \$156 psf.**
- Offered as Income-producing asset with **NOI of \$96,000**
- **For sale as single-tenant investment** or as Owner/User retail/flex.
- **Seller will execute a multi-year sale-leaseback**, allowing the owner to remain in place while pursuing a larger property for expansion

PROPERTY HIGHLIGHTS

- Single-tenant configuration totaling **7,680 square feet** on a **0.86-acre parcel**, providing a straightforward ownership structure with simplified management
- Long-term upside through rental growth, lease structuring, and asset appreciation
- Strong visibility and access from North Point Blvd with convenient connectivity to US-52, I-40, and surrounding employment centers
- Positioned within a dense commercial and industrial submarket supporting consistent tenant demand
- Located in a major employment corridor with nearby industrial, distribution, and service users and surrounded by national, regional, and local businesses driving strong daytime population and traffic
- Functional retail and flex layout suitable for service, school, church, day care, showroom, or light commercial use
- Ample on-site parking and operational flexibility relative to building size property for expansion

TENANT PROFILE

K9 Coaching Academy is a professional dog and puppy training facility offering a wide range of training services tailored to dogs of all ages and breeds, helping owners improve obedience, manners, confidence, and overall behavior.

Services Offered:

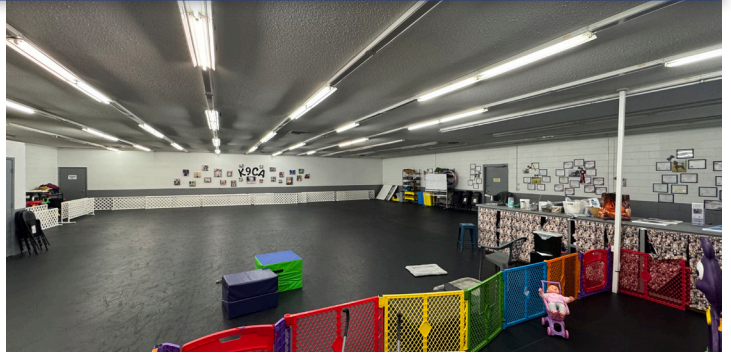
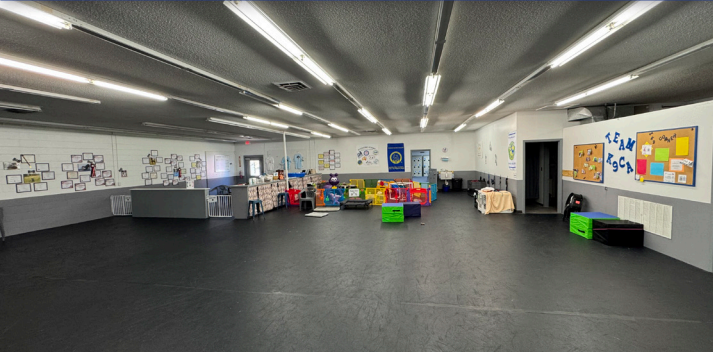
- Basic obedience & family dog training — loose-leash walking, manners at home and in public.
- Specialized courses — tricks, canine fitness & injury prevention, nose work, and competitive sports preparation.
- Therapy dog training and AKC Canine Good Citizen testing.



BIRDS EYE (RETAIL JUNIOR BOX)



PHOTOS

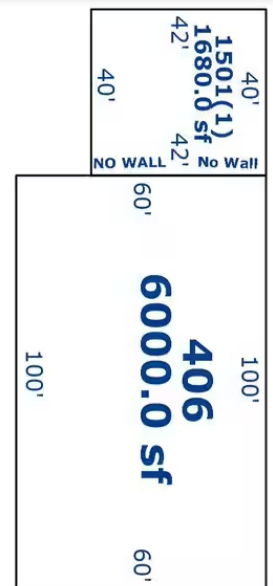
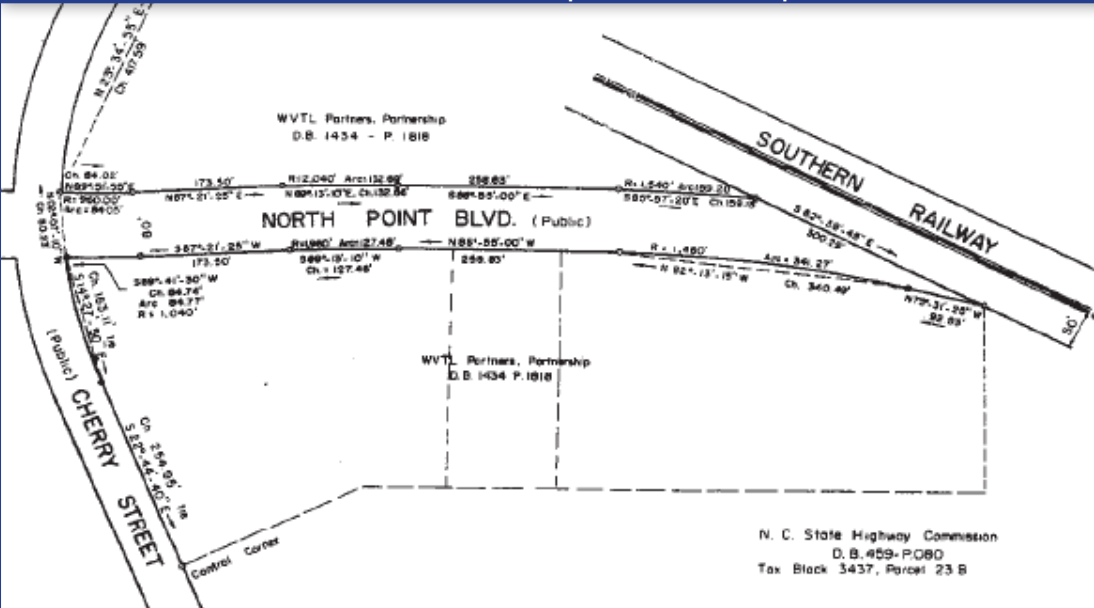


Fenced Outside Storage







Rear Loading Area

SURVEY | SITE PLAN | FLOORPLAN



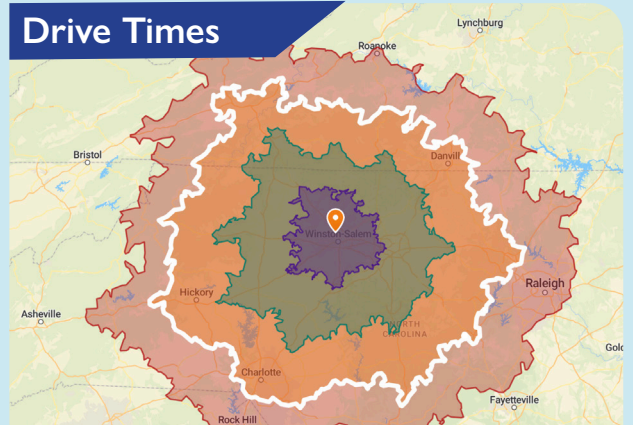
BIRDS EYE (RETAIL JUNIOR BOX)

Demographics

	5 mi.	10 mi.	15 mi.
 Population	135,017	341,091	481,463
 Average Household	56,394	142,294	201,462
 Household Income	\$61,329	\$67,263	\$70,348
 Daytime Employment	56,004	154,931	220,873

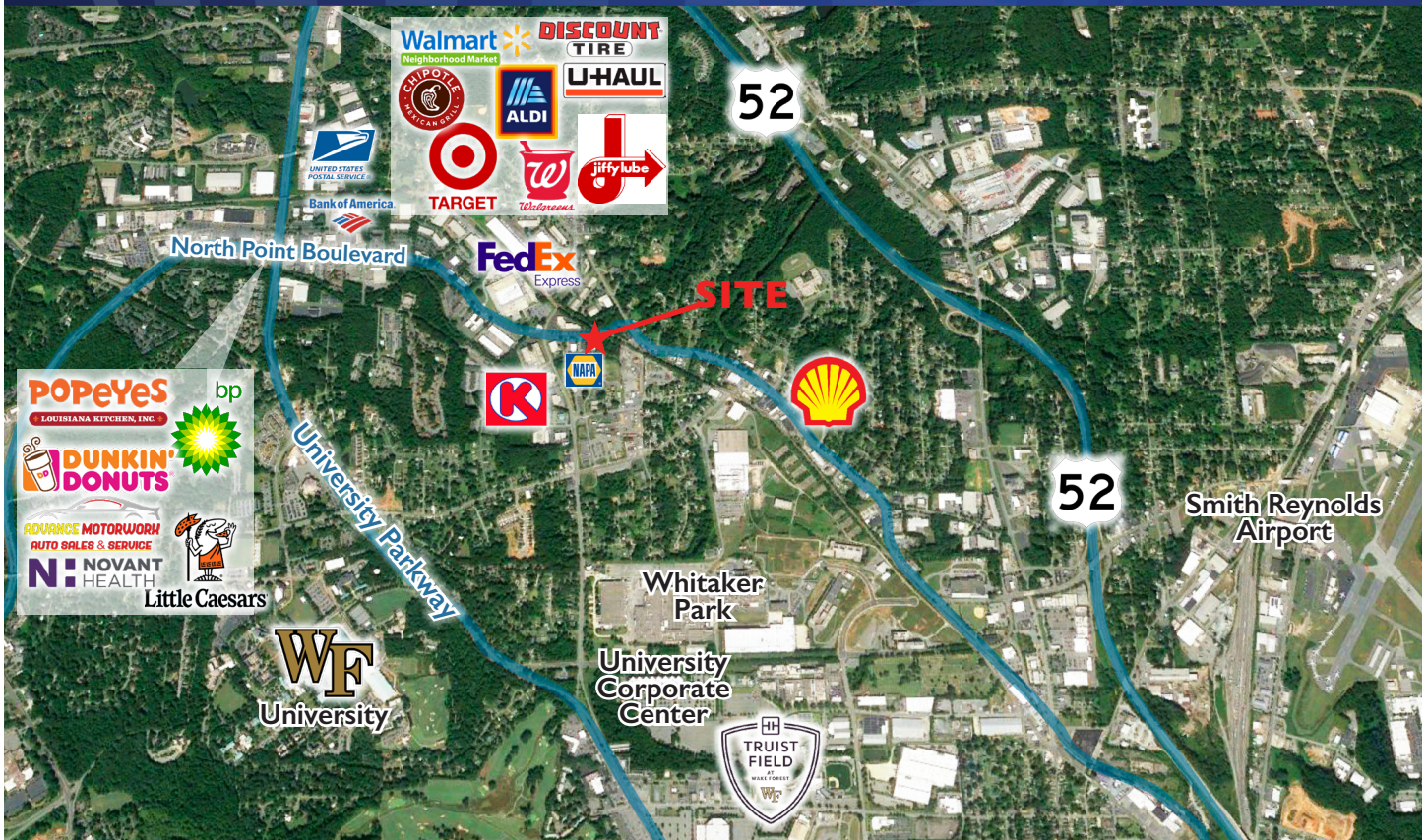
Source: Esri

Drive Times



35 min to Greensboro
1 hr 25 min to Raleigh
1 hr 40 min to Charlotte

RETAIL AREA MAP



No warranty or representation (express or implied) is made as to the accuracy or completeness of the information set forth herein. All information is submitted subject to errors, omissions, change of price, prior lease or sale, and withdrawal without notice. All marketing material produced by the Meridian Realty Group is proprietary. Any reproduction is expressly prohibited.



THE MERIDIAN REALTY GROUP | 147 S. CHERRY STREET, SUITE 200 | WINSTON-SALEM, NC 27101

P 336.722.1986 | F 336.723.3173

WWW.MERIDIANREALTY.COM