



THE SUMMIT EXECUTIVE OFFICE SUITES

1500 McAndrews Road West, Burnsville, MN 55337

FOR LEASE | INDIVIDUAL OFFICE SUITES

Exit Northstar Realty
160 Commerce Dr E
Belle Plaine, MN 56011

Property Highlights:

- ◆ **Excellent opportunity to lease out a executive office suite**
- ◆ **Available Suites range from 135-1,645SF**
- ◆ **Leas rates from \$400-\$3,500- "A Month Gross"- All In**
- ◆ **Lease includes: Phone, Internet, utilities, pool, exercise room, conference rooms, reception & waiting areas & more**
- ◆ **Excellent location, just off of McAndrews near CR-5 and CR-42 intersection & easy 35-W /35-E Hwy access**



DISCLAIMER: The information contained herein is deemed reliable but is not guaranteed. We have not verified its accuracy nor do we make any warranty or representation about it. You and your tax and legal advisors should conduct your own investigation of the property and transaction.



For more information, please contact:
Craig Loudon
612.916.9705
ccl92@frontiernet.net

Suites Available

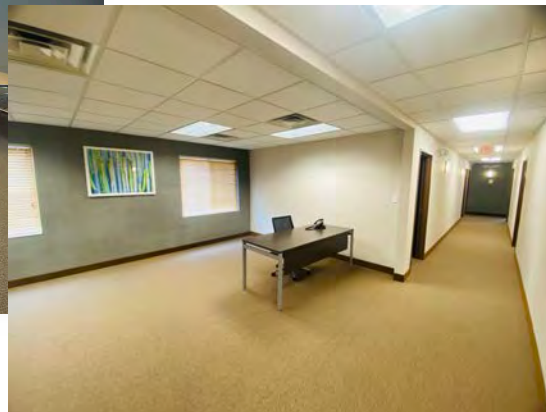
The Summit Executive Office Suites

1500 McAndrews Road West, Burnsville, MN 55337

Available Space

Suite #	SF	\$/Month	Available	Notes
100	1,645	\$3,500	4-6-26	
105	140	\$500	Now	
207	140	\$500	5-3-26	
208	190	\$700	Now	

Suite #	SF	\$/Month	Available	Notes
218	140	\$500	4-6-2026	
221A	135	\$400	2-10-2026	
222	140	\$500	4-7-2026	



- Reception in main lobby
- Waiting areas on first and second floors
- Elevator
- Party Room/Lounge Area
- Three conference rooms
- Work room with copier
- Kitchen
- Fitness center
- Swimming pool
- Ample Parking

DISCLAIMER: The information contained herein is deemed reliable but is not guaranteed. We have not verified its accuracy nor do we make any warranty or representation about it. You and your tax and legal advisors should conduct your own investigation of the property and transaction.

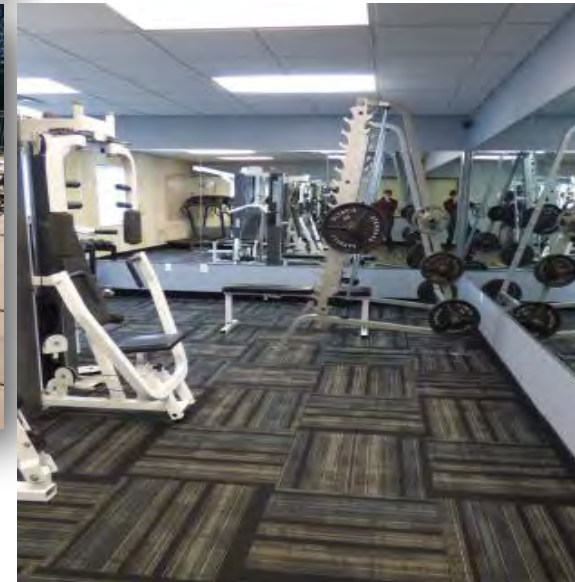
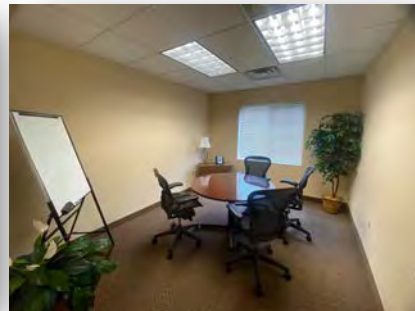
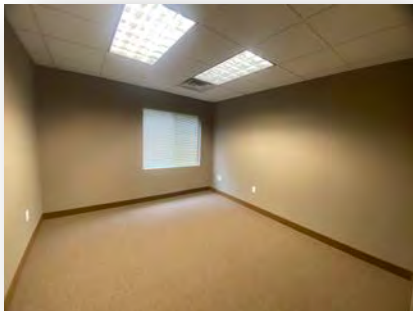


For more information, please contact:
Craig Loudon
 612.916.9705
 ccl92@frontiernet.net

PHOTOS

THE SUMMIT EXECUTIVE OFFICE SUITES

1500 McAndrews Road West, Burnsville, MN 55337



*Exercise Room *Conference Space *Main Floor Reception *Large Conference Room

*Mailboxes *Work Room *Pool *Kitchen / Break Room

DISCLAIMER: The information contained herein is deemed reliable but is not guaranteed. We have not verified its accuracy nor do we make any warranty or representation about it. You and your tax and legal advisors should conduct your own investigation of the property and transaction.



For more information, please contact:
Craig Loudon
612.916.9705
ccl92@frontiernet.net

1st FLOOR PLAN

THE SUMMIT EXECUTIVE OFFICE SUITES

1500 McAndrews Road West, Burnsville, MN 55337



DISCLAIMER: The information contained herein is deemed reliable but is not guaranteed. We have not verified its accuracy nor do we make any warranty or representation about it. You and your tax and legal advisors should conduct your own investigation of the property and transaction.



For more information, please contact:
Craig Loudon
612.916.9705
ccl92@frontiernet.net

2nd FLOOR PLAN

THE SUMMIT EXECUTIVE OFFICE SUITES

1500 McAndrews Road West, Burnsville, MN 55337



DISCLAIMER: The information contained herein is deemed reliable but is not guaranteed. We have not verified its accuracy nor do we make any warranty or representation about it. You and your tax and legal advisors should conduct your own investigation of the property and transaction.

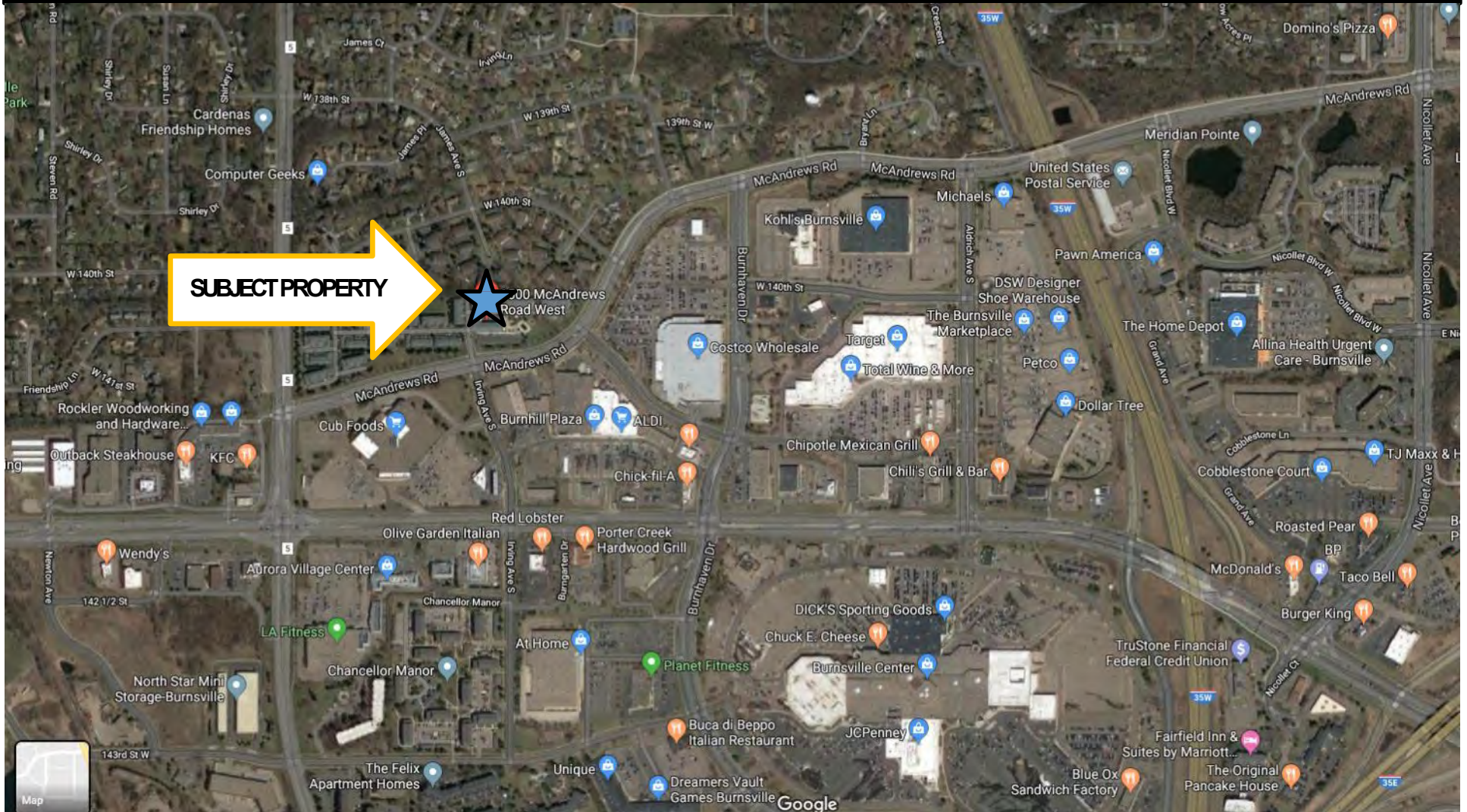


For more information, please contact:
Craig Loudon
 612.916.9705
 ccl92@frontiernet.net

AREA MAP

THE SUMMIT EXECUTIVE OFFICE SUITES

1500 McAndrews Road West, Burnsville, MN 55337



DISCLAIMER: The information contained herein is deemed reliable but is not guaranteed. We have not verified its accuracy nor do we make any warranty or representation about it. You and your tax and legal advisors should conduct your own investigation of the property and transaction.



For more information, please contact:
Craig Loudon
612.916.9705
ccl92@frontiernet.net