

FREMONT BUSINESS PARK

42808 & 42840 CHRISTY ST.
42501 ALBRAE ST.
FREMONT, CA 94538



Wide range of office spaces, now
offered at discounted rates!



Site Information

Total size of 119,038 sq. ft. across all three buildings

Promotes energy efficiency with recently-installed solar panels on each building

On-site amenities including a common conference room, fitness center, & abundance of parking spaces

Immediate access to I-880 at Auto Mall Parkway, and a short distance to Pacific Commons Shopping Center

Drive Times

Pacific Commons Shopping Center
0.4 mi

Newpark Mall
2.1 mi

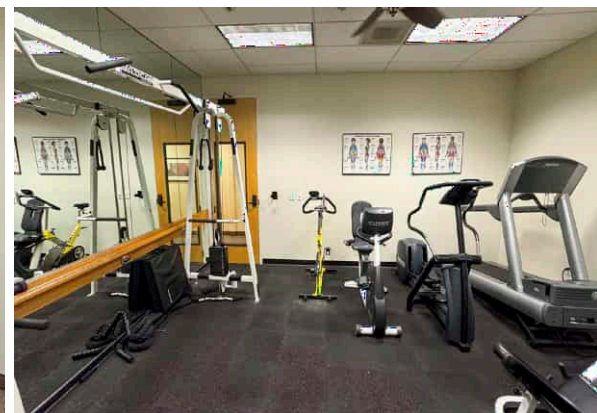
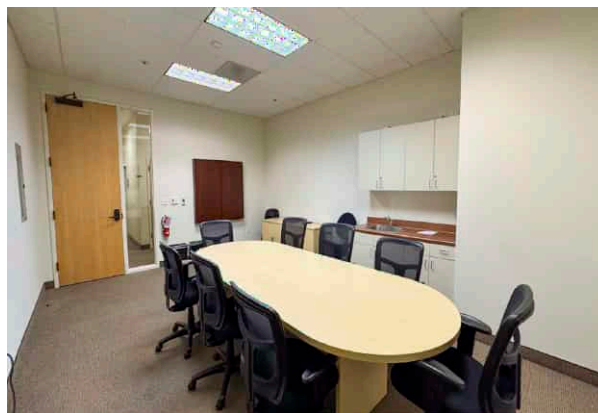
Interstate 880
0.5 mi

Interstate 680
2.1 mi

The statement with the information it contains is given with the understanding that all negotiations relating to this purchase, renting or leasing of the property described above shall be conducted through this office. The above information while not guaranteed, has been secured from sources we believe to be reliable. Offering subject to change.



Photo Gallery



FREMONT BUSINESS PARK

The statement with the information it contains is given with the understanding that all negotiations relating to this purchase, renting or leasing of the property described above shall be conducted through this office. The above information while not guaranteed, has been secured from sources we believe to be reliable. Offering subject to change.



Current Availabilities

	Address	Suite	Size	Rate \$/SF/MO
<i>jump to page ►</i>	42808 Christy St.	101	6,045 RSF	\$ 1.41 NNN
<i>jump to page ►</i>	42808 Christy St.	100	5,120 RSF	\$ 1.41 NNN
<i>jump to page ►</i>	42808 Christy St.	200	4,008 RSF	\$ 1.41 NNN
<i>jump to page ►</i>	42840 Christy St.	110	3,323 RSF	\$ 1.41 NNN
<i>jump to page ►</i>	42840 Christy St.	108	2,623 RSF	\$ 1.41 NNN
<i>jump to page ►</i>	42808 Christy St.	221	2,562 RSF	\$ 1.41 NNN
<i>jump to page ►</i>	42808 Christy St.	201	2,506 RSF	\$ 1.41 NNN
<i>jump to page ►</i>	42840 Christy St.	210	1,579 RSF	\$ 1.41 NNN
<i>jump to page ►</i>	42808 Christy St.	225	1,512 RSF	\$ 1.41 NNN
<i>jump to page ►</i>	42808 Christy St.	203	1,438 RSF	\$ 1.41 NNN
<i>jump to page ►</i>	42808 Christy St.	116	1,064 RSF	\$ 1.41 NNN

- » Discounted rates on all spaces
- » Varying space sizes to suit your business's needs
- » Some furnished options available
- » Flexible lease terms

For more information or to schedule a tour,
please contact:

Buddy Parsons
President
408.453.4700x116
buddy@borelli.com
LIC. 00754782

Lee Jatta
Senior Vice President
408.453.4700x140
lee@borelli.com
LIC. 01828564

Abigail Parsons
Property Manager
408.453.4700x100
abigail@borelli.com
LIC. 02114081



Scan or click here to
learn more

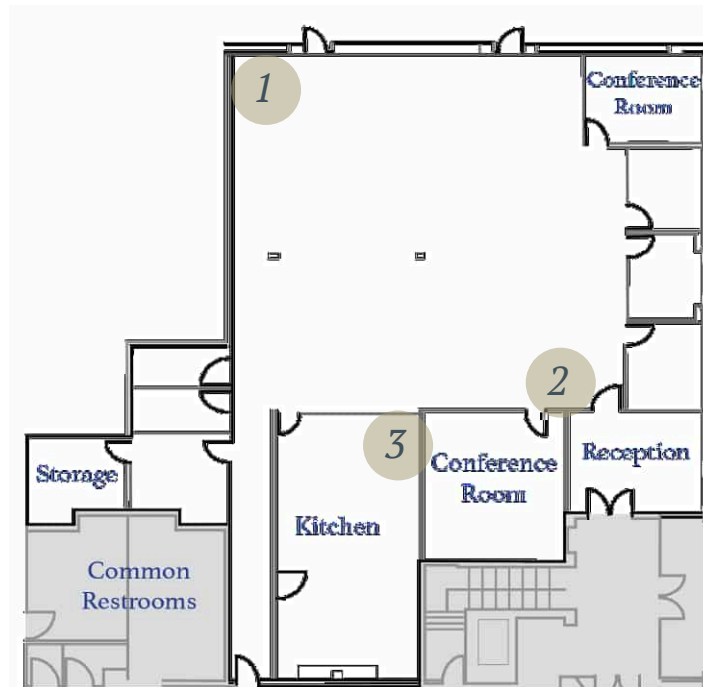
The statement with the information it contains is given with the understanding that all negotiations relating to this purchase, renting or leasing of the property described above shall be conducted through this office. The above information while not guaranteed, has been secured from sources we believe to be reliable. Offering subject to change.



42808 Christy St. Suite 101

6,045 RSF

- » Corner suite
- » Six private offices
- » Two conference rooms
- » Reception area
- » Kitchen area
- » Large open area
- » Storage

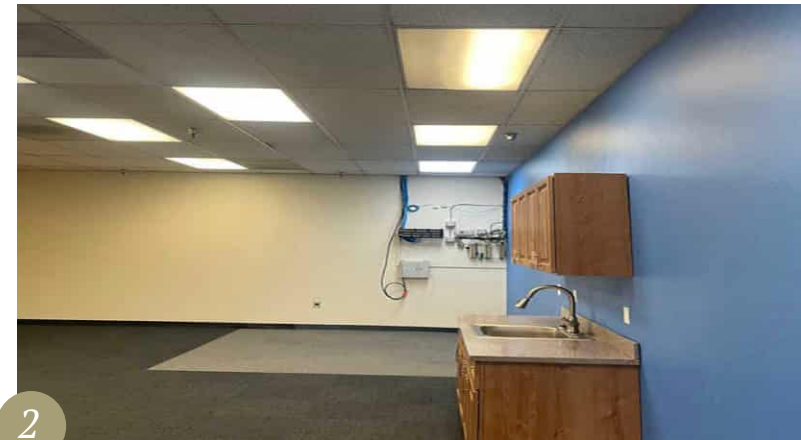
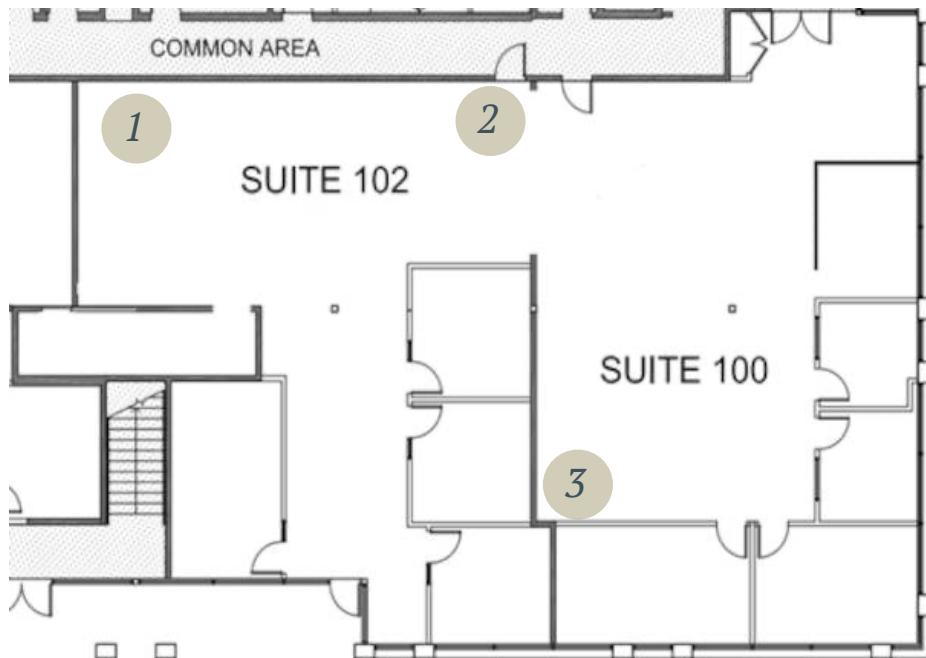


42808 Christy St.

Suite 100

5,120 RSF

- » Seven private offices
- » Two open areas
- » Conference room
- » Kitchenette
- » Server room
- » Storage

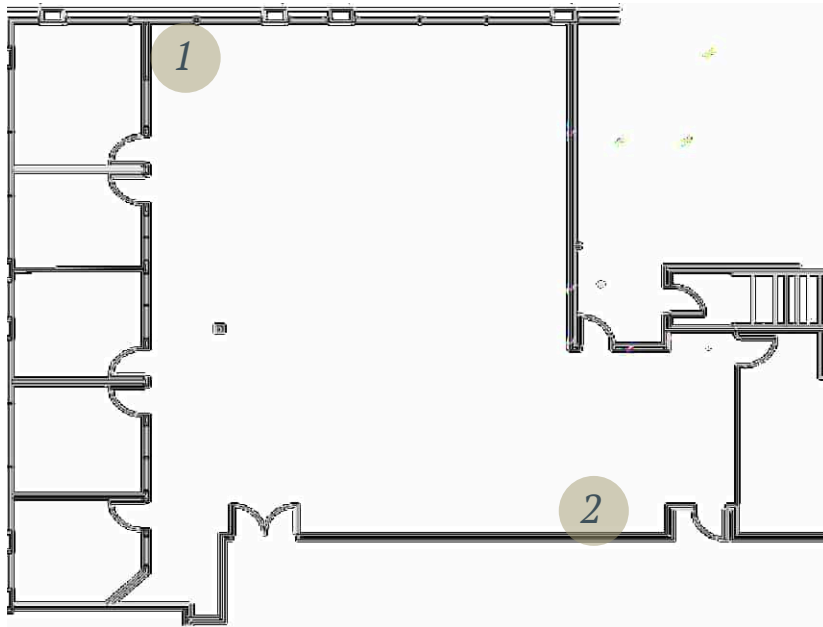


42808 Christy St.

Suite 200

4,008 RSF

- » Five private offices
- » Large open area
- » Storage

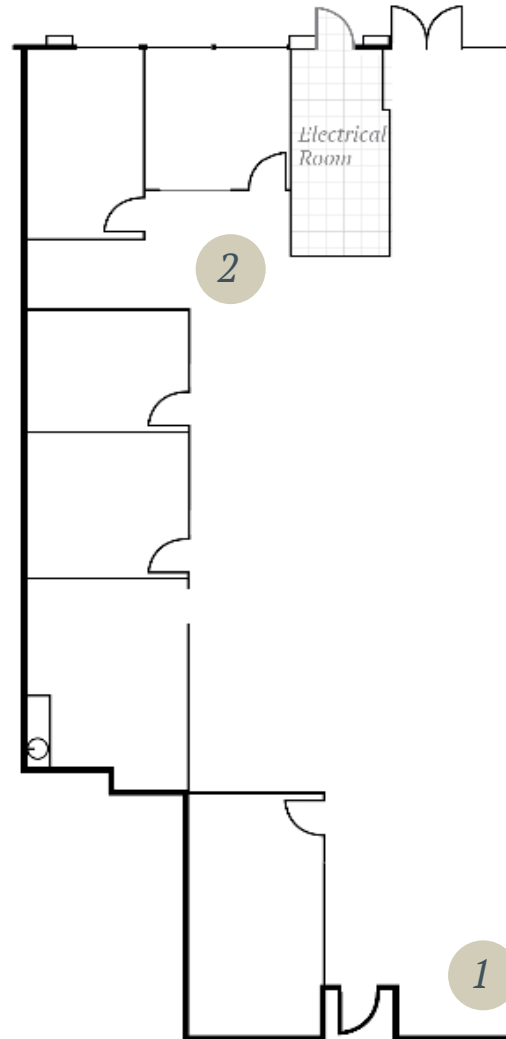


42840 Christy St.

Suite 110

3,323 RSF

- » Four private offices
- » Conference room
- » Kitchen
- » Large open area
- » Exterior double-door entrance

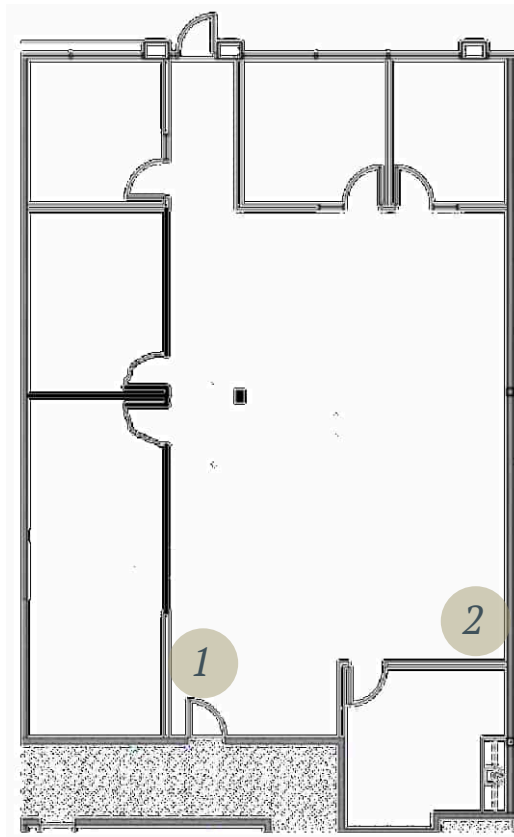


42840 Christy St.

Suite 108

2,623 RSF

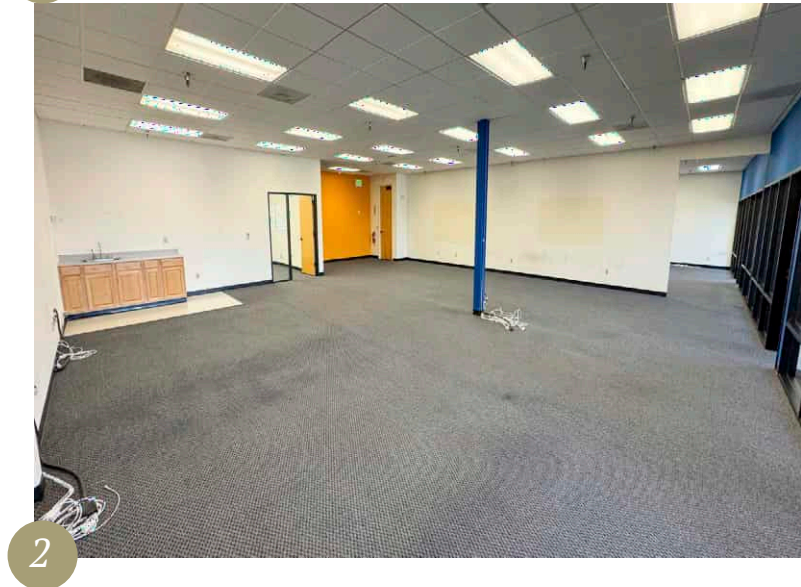
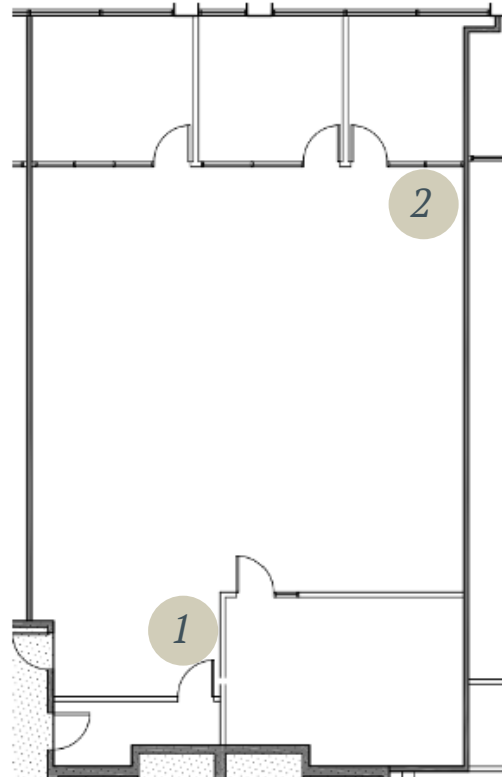
- » Four private offices, three with windows
- » Conference room
- » Kitchen
- » Large open area



42808 Christy St. Suite 221

2,562 RSF

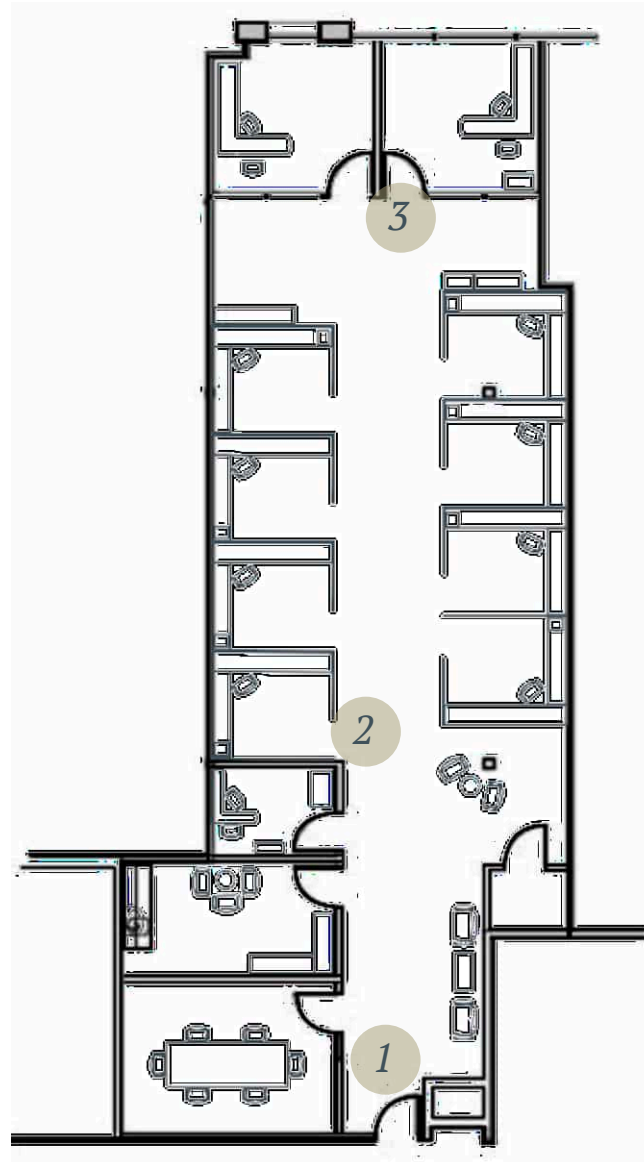
- » Three private offices
- » Conference room
- » Large open area
- » Kitchenette
- » Storage/server room



42808 Christy St. Suite 201

2,506 RSF

- » Three private offices
- » Conference room
- » Kitchen
- » Server room
- » Furniture included
- » Eight workstations



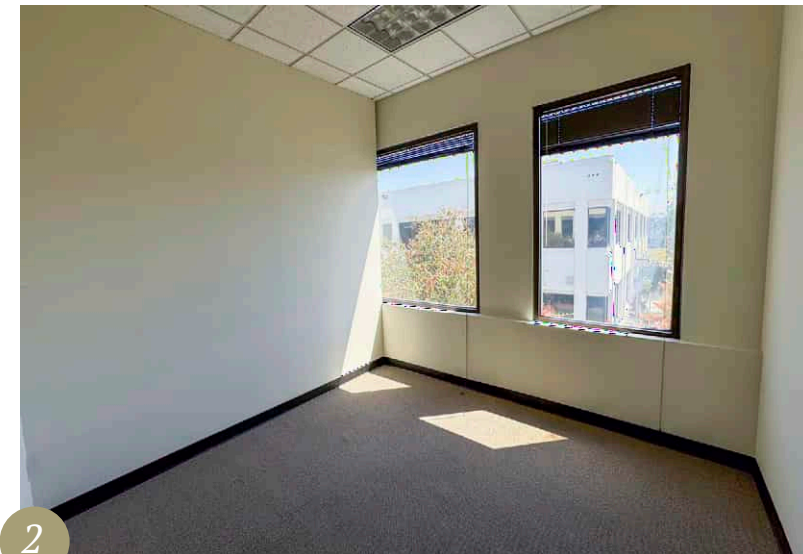
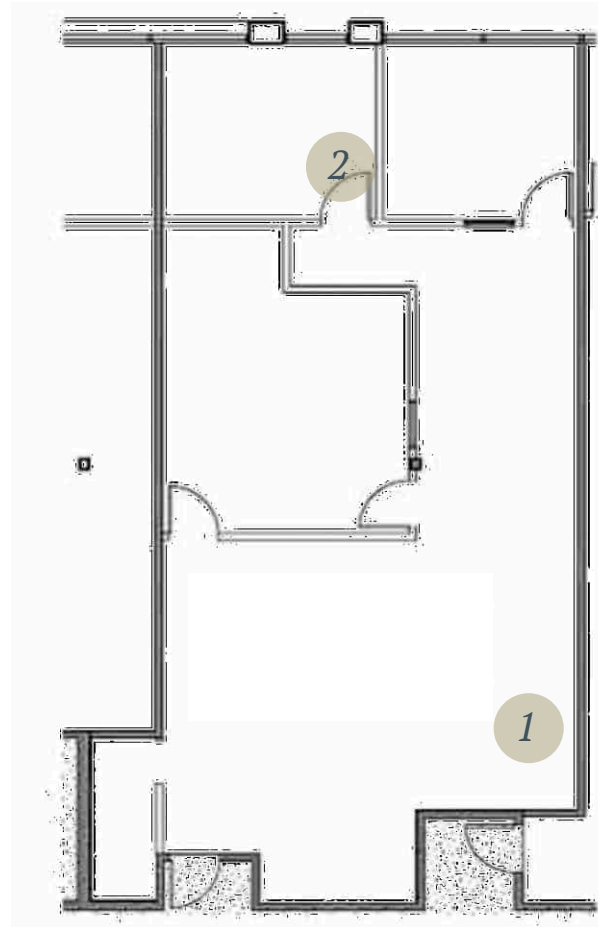
The statement with the information it contains is given with the understanding that all negotiations relating to this purchase, renting or leasing of the property described above shall be conducted through this office. The above information while not guaranteed, has been secured from sources we believe to be reliable. Offering subject to change.

42840 Christy St.

Suite 210

1,579 RSF

- » Two private offices
- » Conference room
- » Open area

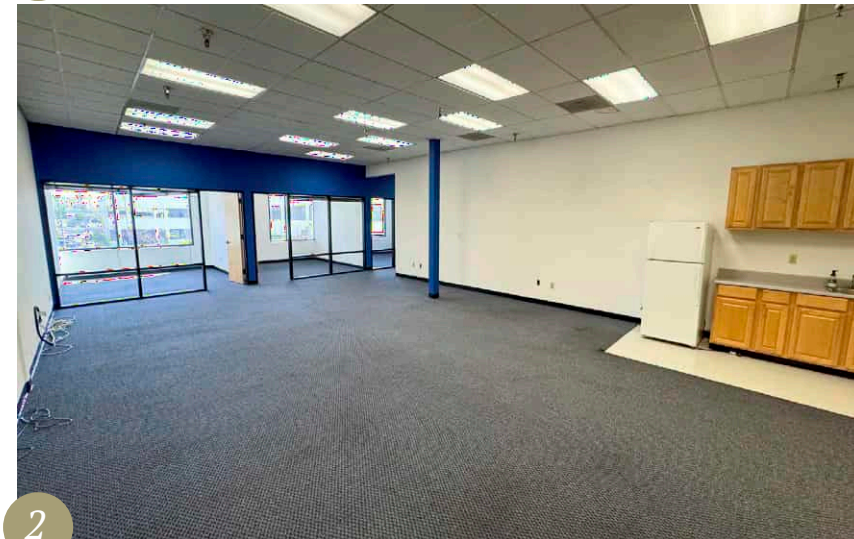
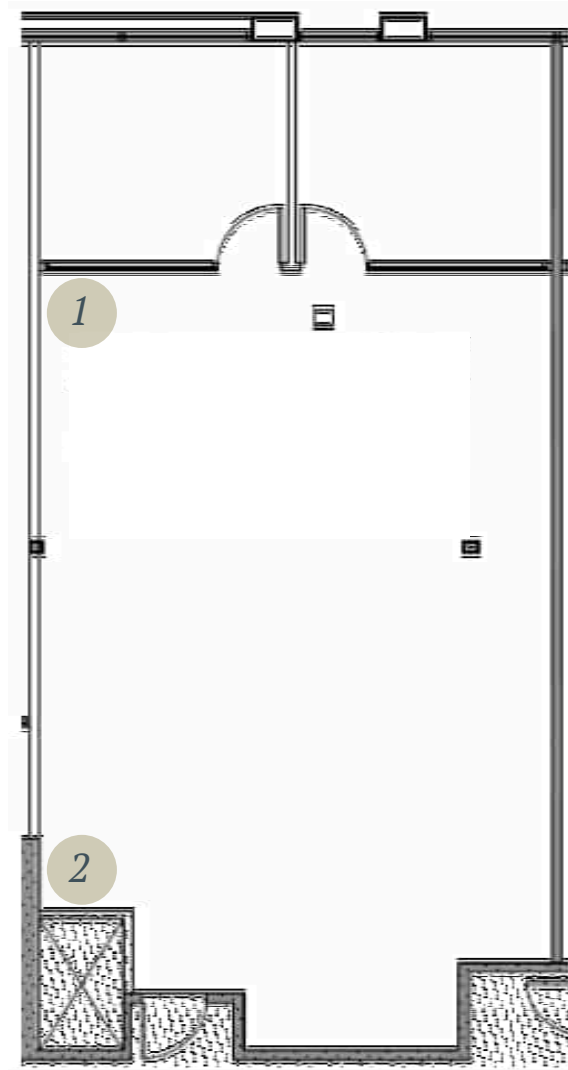


42808 Christy St.

Suite 225

1,512 RSF

- » Two private offices
- » Kitchenette
- » Large open area

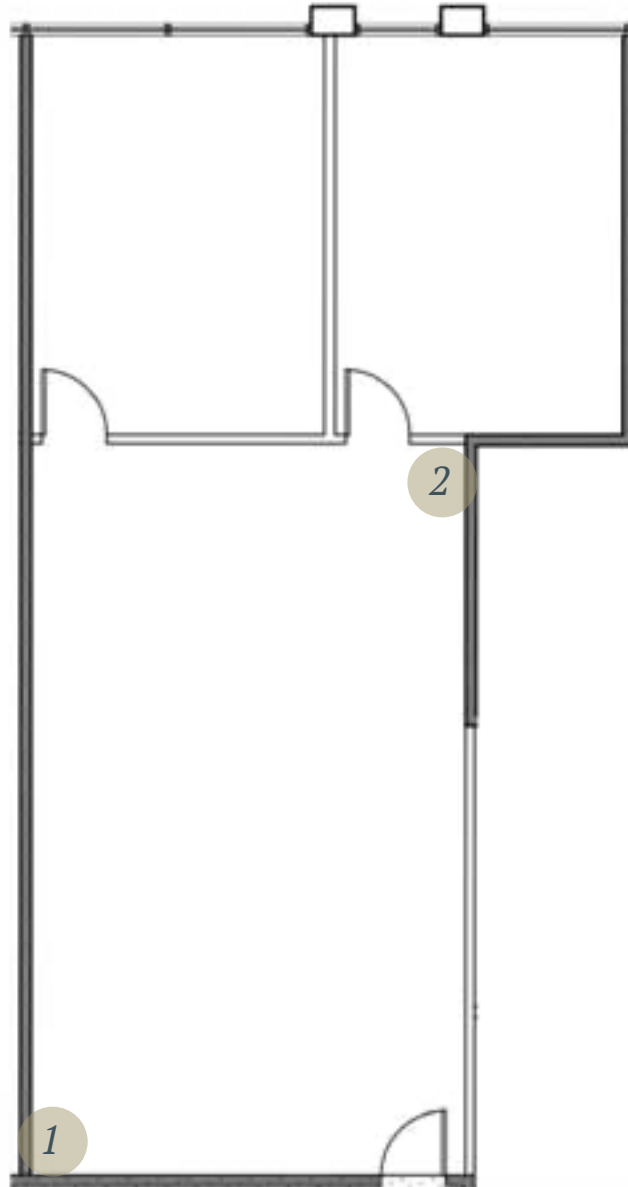


42808 Christy St.

Suite 203

1,438 RSF

- » Two private offices
- » Large open area



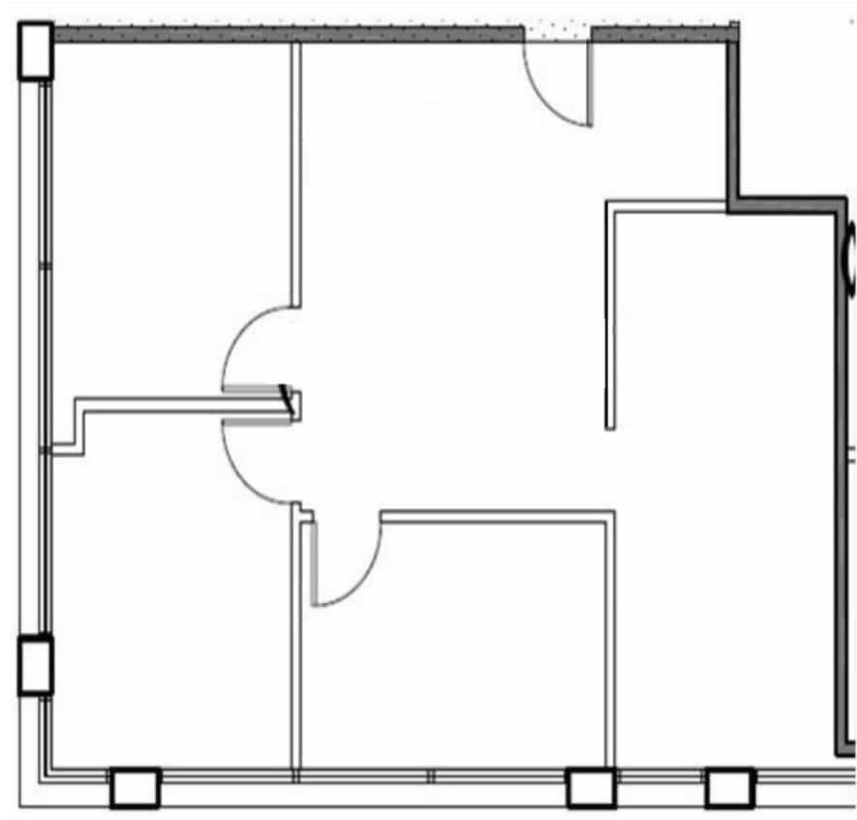
42808 Christy St.

Suite 116

1,064 RSF

Available September 1, 2025

- » Three private offices
- » Conference room
- » Open area



FREMONT BUSINESS PARK

I-880

Pacific
Commons
Shopping
Center

FREMONT BUSINESS PARK

Nearby Amenities

Pacific Commons
Shopping Center

Dozens of retail & dining options

Other Nearby Destinations

Within Two Miles



The statement with the information it contains is given with the understanding that all negotiations relating to this purchase, renting or leasing of the property described above shall be conducted through this office. The above information while not guaranteed, has been secured from sources we believe to be reliable. Offering subject to change.

Accessibility

Convenient freeway access and walking distance to major retail & dining destinations

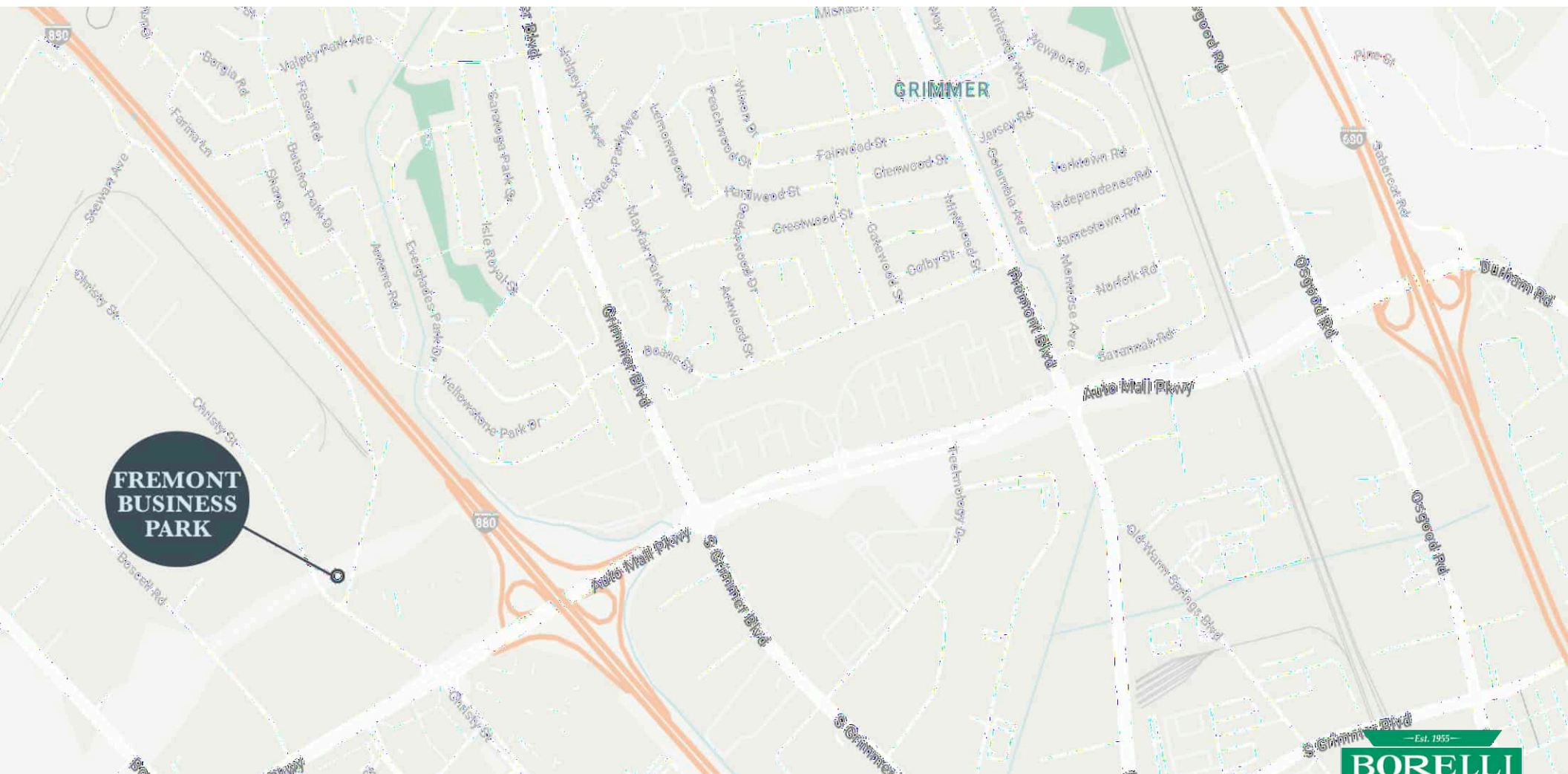
Drive Times

Pacific Commons Shopping Center
0.4 mi

Interstate 880
0.5 mi

Newpark Mall
2.1 mi

Interstate 680
2.1 mi



The statement with the information it contains is given with the understanding that all negotiations relating to this purchase, renting or leasing of the property described above shall be conducted through this office. The above information while not guaranteed, has been secured from sources we believe to be reliable. Offering subject to change.

FREMONT BUSINESS PARK

42808 & 42840 CHRISTY ST.
42501 ALBRAE ST.
FREMONT, CA 94538



BUDDY PARSONS

President
408.453.4700x116
buddy@borelli.com
LIC. 00754782

LEE JATTA

Senior Vice President
408.453.4700x140
lee@borelli.com
LIC. 01828564

ABIGAIL PARSONS

Property Manager
408.453.4700x100
abigail@borelli.com
LIC. 02114081



Scan or click here to
learn more
www.borelli.com