

Former Bank Branch

In The Watertown, NY Region

28499 NY Route 3
Black River, NY 13612

3,472 Square Feet With Drive-Thru & On-Site Parking



Offering Overview

CBRE Upstate NY is pleased to offer this 3,472 square foot retail property in the Village of Black River (Jefferson County). Currently built out for use as a bank branch, the property offers a 2-lane drive-thru, and a parking lot for employees and customers. Situated on a primary east-west traffic corridor between Watertown at Fort Drum the property's neighbors include Dollar General and the US Post Office.

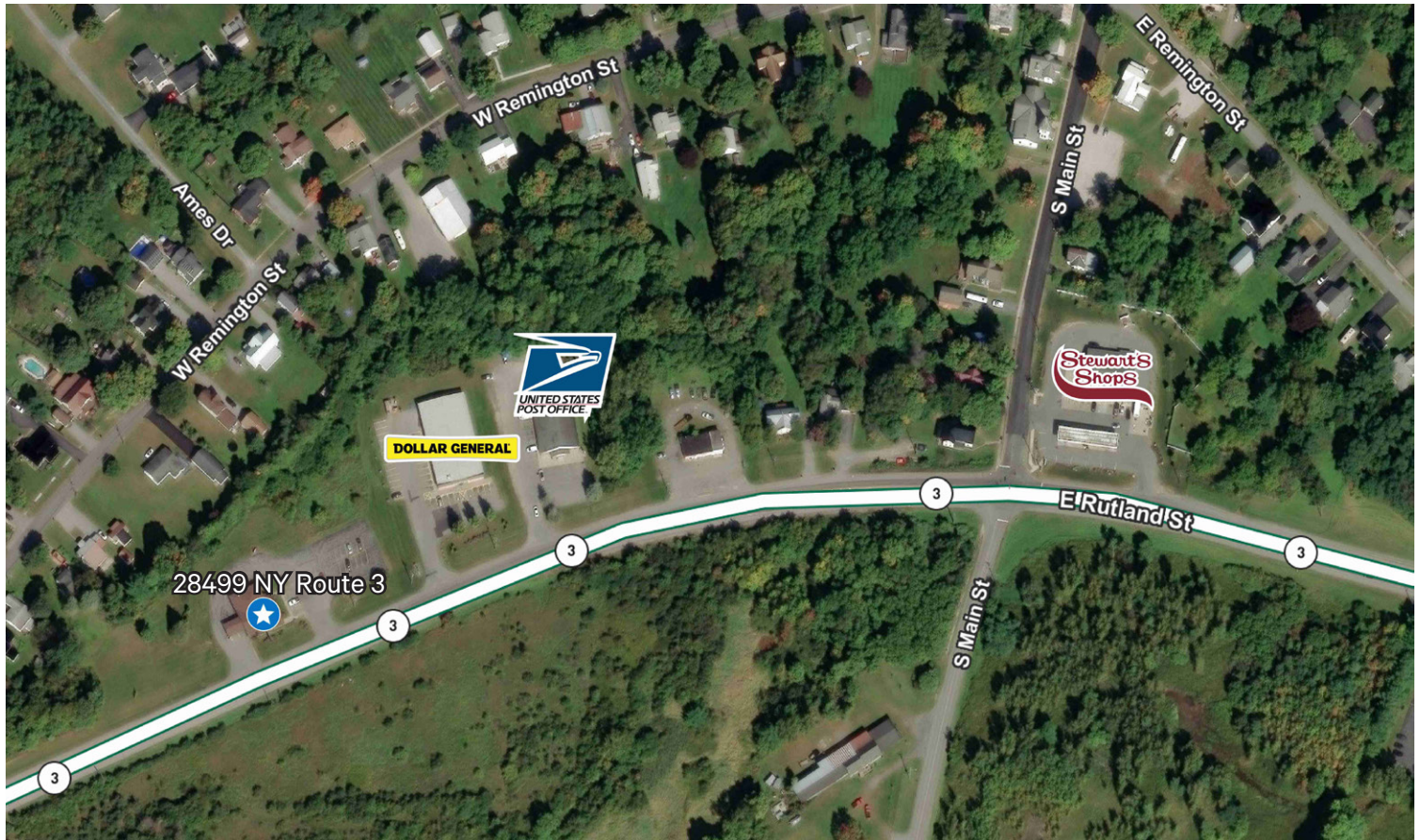
Offering Details

- + Former Bank Branch
- + 3,472 Square Feet
- + 23± Space Parking Lot
- + 2-Lane Drive-Thru
- + Sale Price: \$250,000

Retail

28499 NY Route 3 | Black River, NY 13612

For Sale



Property Overview

- + 3,472 square foot, former bank branch
- + 2.3 acre lot
- + Tax parcels: 15.00-3-11.1
- + 23± space parking lot
- + 2-Lane Drive-Thru
- + Highly visible location on Route 3
- + Positioned on a primary east-west traffic corridor between Watertown and Fort Drum.
- + Neighboring uses include Dollar General and US Post Office.

Contact Us

Courtney Janto

+1 585 559 4150

courtney.janto@cbre-rochester.com

Licensed Real Estate Salesperson

Andrew Gearhart

+1 585 784 3626

andrew.gearhart@cbre-rochester.com

Licensed Real Estate Salesperson

© 2026 CBRE Upstate NY, part of the CBRE Affiliate Network. All rights reserved. This information has been obtained from sources believed reliable, but has not been verified for accuracy or completeness. You should conduct a careful, independent investigation of the property and verify all information. Any reliance on this information is solely at your own risk. CBRE Upstate NY and the CBRE Upstate NY logo are service marks of CBRE Upstate NY. All other marks displayed on this document are the property of their respective owners, and the use of such logos does not imply any affiliation with or endorsement of CBRE Upstate NY. Photos herein are the property of their respective owners. Use of these images without the express written consent of the owner is prohibited.

CBRE Upstate NY

1350 University Avenue

Rochester, NY 14607

+1 585 240 8080

www.cbre.com/rochester

CBRE Upstate NY

PART OF THE AFFILIATE NETWORK