

FOR SALE

PENNY ARCADE BUILDING

*33,225 SF Office/Warehouse
For Sale on a 65,340 SF Lot in
Willows Industrial District*

9660 153RD AVE NE | REDMOND, WA

KIDDER.COM

 Kidder
Mathews

The subject property is located on the Sammamish River, in the highly sought-after Willows industrial district of Redmond, WA

PROPERTY INFORMATION

ADDRESS	9660 153rd Ave NE, Redmond, WA	
BUILDING AREA	Total	33,225 SF
	Office	17,748 SF
	Warehouse	15,477 SF
TYPE	Manufacturing	
LAND AREA	65,340 SF	
STORIES	One story with mezzanine office	
CEILING HEIGHT	29'	
ZONING	MP, Manufacturing Park	
POWER	1,000 amps of 277/480v, 3-phase	
LOADING	2 dock-high & 1 grade-level doors	

33,225 SF

BUILDING AREA

1.5 AC

LAND AREA



MAIN FLOOR PLAN



33,225 SF

TOTAL BUILDING AREA

15,477 SF

WAREHOUSE

5,523 SF

OFFICE (MAIN FLOOR)

LEGEND

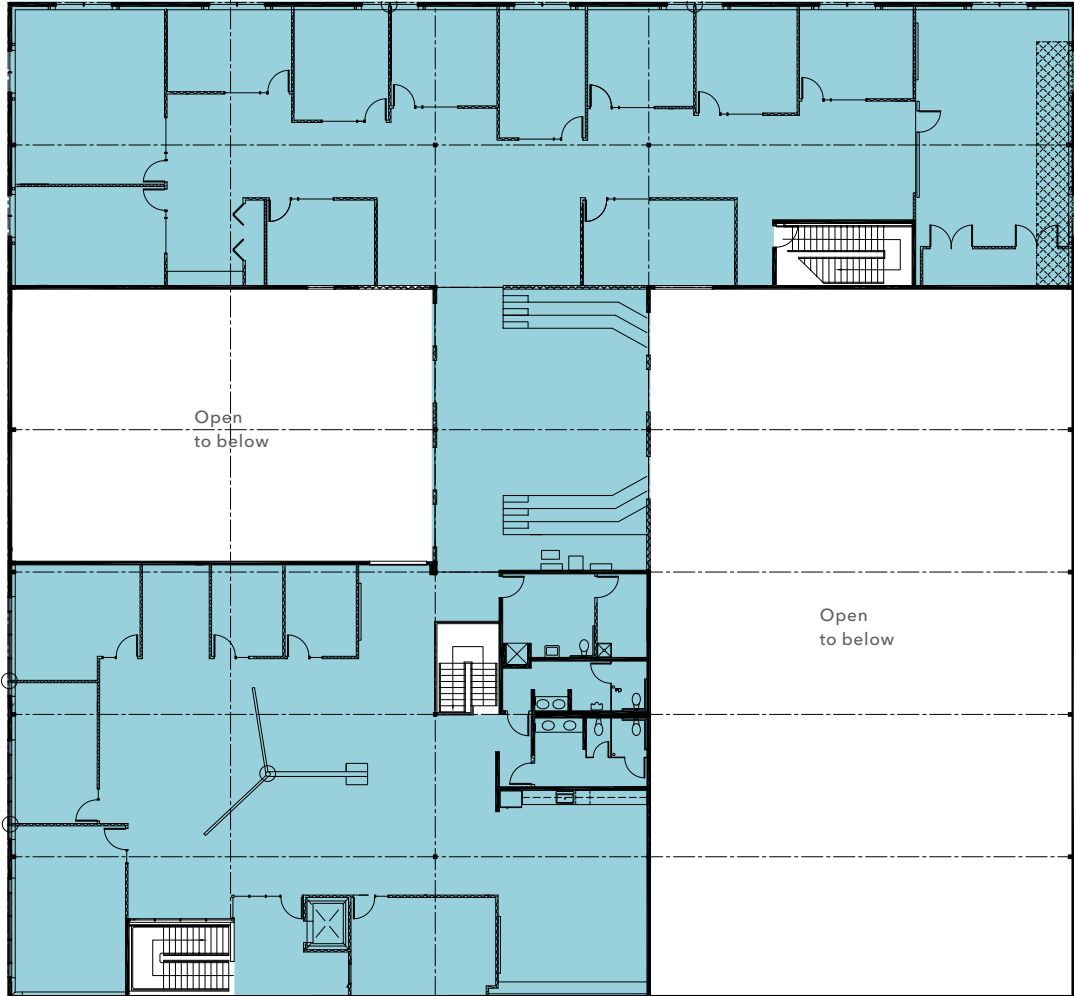
■ Office

■ Warehouse

△ Dock-high loading

▲ Grade-level loading

MEZZANINE FLOOR PLAN



33,225 SF

TOTAL BUILDING AREA

12,225 SF

OFFICE (MEZZANINE)

LEGEND

- Office
- Warehouse
- △ Dock-high loading
- ▲ Grade-level loading



PENNY ARCADE BUILDING | REDMOND, WA



PENNY ARCADE BUILDING | REDMOND, WA



PENNY ARCADE BUILDING | REDMOND, WA

8.5 MI

TO BELLEVUE

17 MI

TO SEATTLE

25 MI

TO EVERETT

WILLOWS INDUSTRIAL DISTRICT

SUBJECT PROPERTY

REDMOND

520

405

520

BELLEVUE

Northeast Bellevue

SEATTLE

Lake Washington

Lake Sammamish



East Link Light Rail Extension

AVAILABLE FOR SALE

KIDDER MATHEWS



PENNY ARCADE BUILDING

*For more information about
this property, please contact*

AARON KRAFT
Senior Vice President
425.450.1105
aaron.kraft@kidder.com

KIDDER.COM

This information supplied herein is from sources we deem reliable. It is provided without any representation, warranty, or guarantee, expressed or implied as to its accuracy. Prospective Buyer or Tenant should conduct an independent investigation and verification of all matters deemed to be material, including, but not limited to, statements of income and expenses. Consult your attorney, accountant, or other professional advisor.

