

GROUND LEASE AVAILABLE

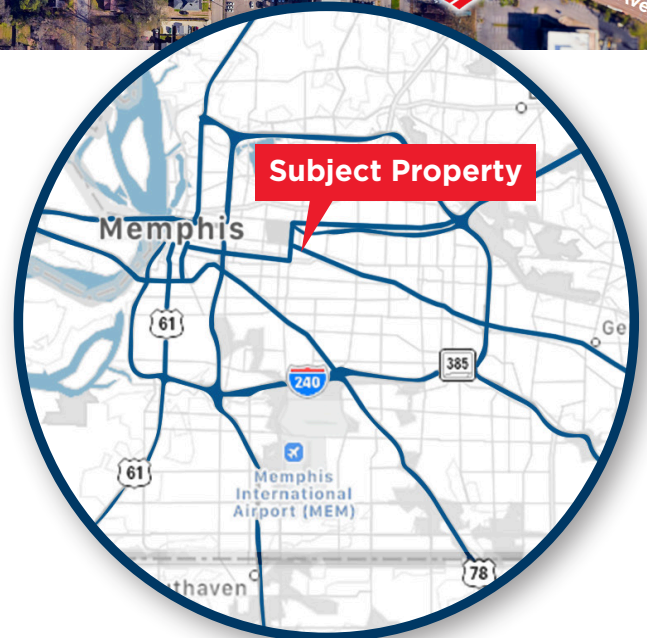
2486 Poplar Ave  
Memphis, TN 38112



## PROPERTY HIGHLIGHTS

- 0.886 Acres available for Ground Lease on Poplar Ave
- Zoned CMU-3
- Two existing curb cuts

**TRAFFIC COUNTS:** Poplar Ave - 14,917 VPD



**Carson Claybrook**  
Vice President- Retail Brokerage Services  
901 252 6483  
cclaybrook@commadv.com

5101 Wheelis Drive, Suite 300  
Memphis, TN 38117  
Main: 901 366 6070  
[www.commadv.com](http://www.commadv.com)

*Independently Owned and Operated / A Member of the Cushman & Wakefield Alliance*

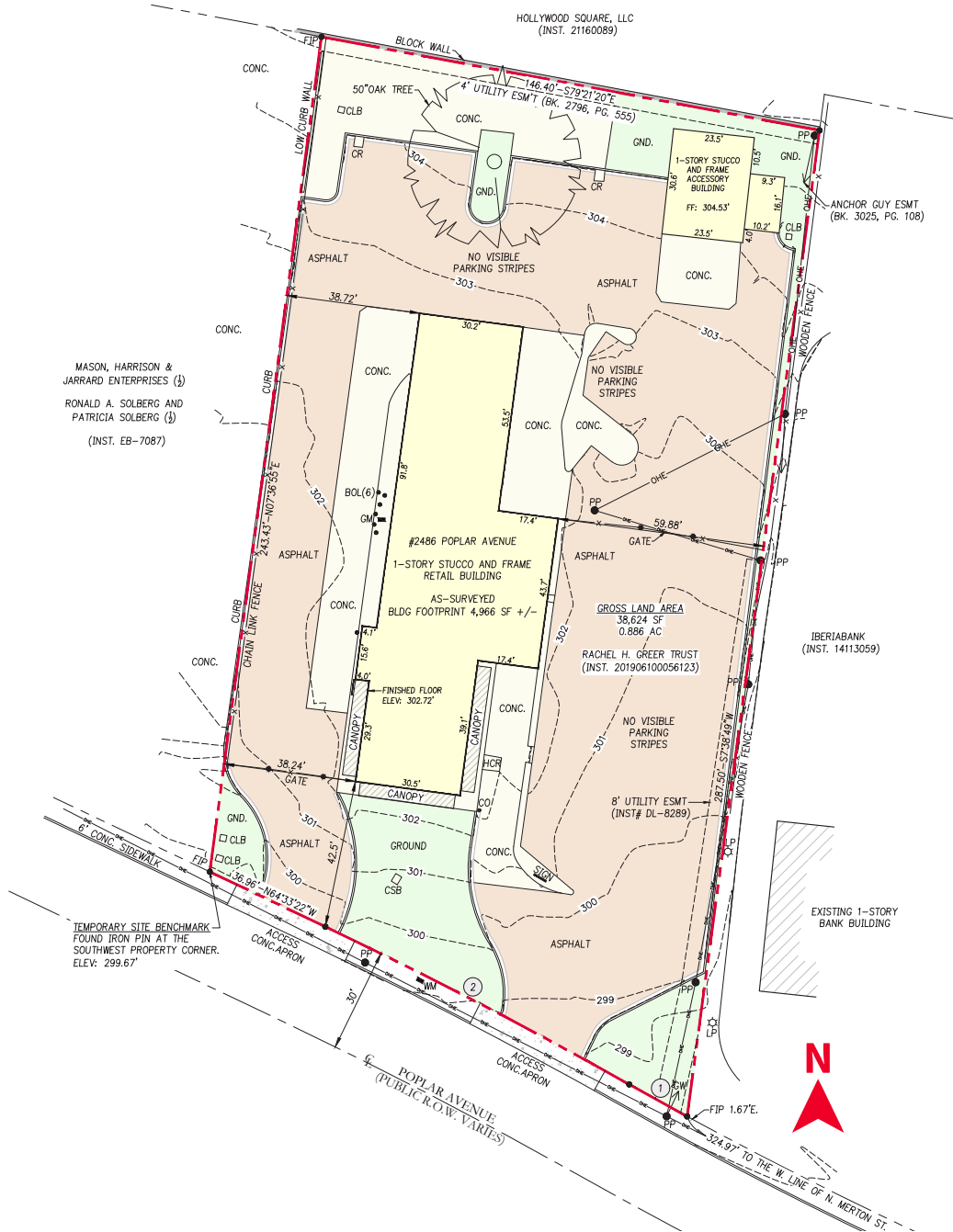
Cushman & Wakefield Copyright 06/24/24. No warranty or representation, express or implied, is made to the accuracy or completeness of the information contained herein, and same is submitted subject to errors, omissions, change of price, rental or other conditions, withdrawal without notice, and to any special listing conditions imposed by the property owner(s). As applicable, we make no representation as to the condition of the property (or properties) in question.

GROUND LEASE AVAILABLE

2486 Poplar Ave  
Memphis, TN 38112



# SITE SURVEY



**Carson Claybrook**  
Vice President- Retail Brokerage Services  
901 252 6483  
cclaybrook@commadv.com

5101 Wheelis Drive, Suite 300  
Memphis, TN 38117  
Main: 901 366 6070  
[www.commadv.com](http://www.commadv.com)

*Independently Owned and Operated / A Member of the Cushman & Wakefield Alliance*  
Cushman & Wakefield Copyright 06/24/24. No warranty or representation, express or implied, is made to the accuracy or completeness of the information contained herein, and same is submitted subject to errors, omissions, change of price, rental or other conditions, withdrawal without notice, and to any special listing conditions imposed by the property owner(s). As applicable, we make no representation as to the condition of the property (or properties) in question.