



±2,336 SF OFFICE SPACE AVAILABLE FOR LEASE

5890 STONERIDGE DRIVE, PLEASANTON, CA 94588

LOCAL EXPERTISE. INTERNATIONAL REACH. WORLD CLASS.



PROPERTY HIGHLIGHTS



Property type: Two-story Office building



Suite 212: ±2,336 SF



Ground floor common conference room
Two (2) common break rooms



4/1000 free surface parking



Great amenities within walking distance



Easy access to BART and I-580/I-680



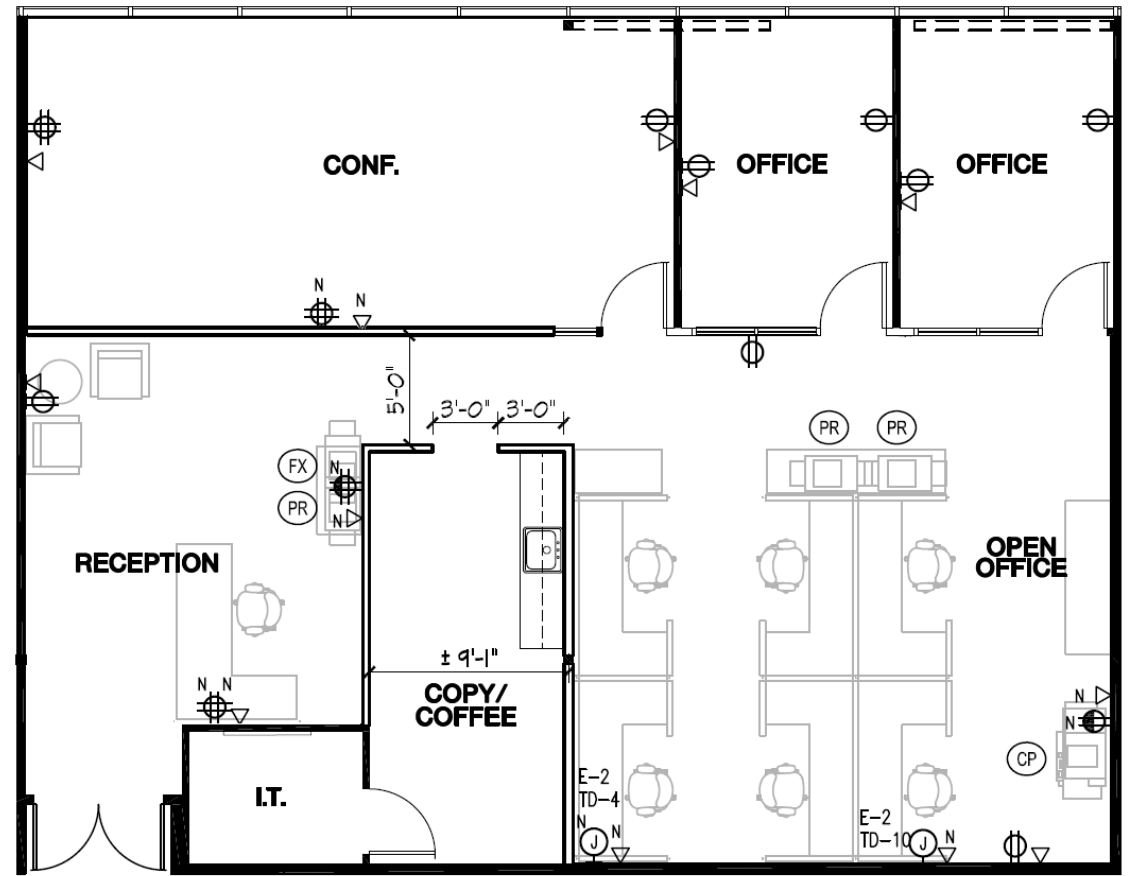
Located within the prestigious
Hacienda Business Park

5890
STONERIDGE DRIVE

Suite 212: ±2,336 SF

Suite consists of:

- Two (2) private offices
- One (1) conference room
- Open office area
- Reception area



GROUND FLOOR COMMON
CONFERENCE ROOM

5890
STONERIDGE DRIVE

FOR LEASE
2,336±SF OFFICE SPACE AVAILABLE

5890 STONERIDGE DRIVE | PLEASANTON, CA 94588



Mark Rinkle

Principal
mrinkle@lee-associates.com
925-737-4145
LIC NO 01512632