

EXCLUSIVE LISTING!

2.07 +/- Acres Apartment Zoned approved-\$1,975,000
1592 E. Hacienda Ave Las Vegas, NV 89119



- APN 162-26-210-012
- 2.07 +/- Acres – Zoning Approved for RM50
- Site Plan Available for 57-unit Multifamily Development- one and two bedroom units in two 3-story buildings.
- Unincorporated Clark County-Winchester Paradise
- About half mile from the Harry Reid Int'l Airport, less than 1 mile from University of Nevada and 3.5 miles from the Las Vegas Strip
- Las Vegas continues to grow with new projects and investment opportunities.
- 2024/25 Taxes \$4,888.61



Mark Anthony Rua
Brokers

S.026655

Office: 702-992-7534
Cell: 702-595-6244

2855 St Rose Parkway, Suite 100, Henderson, NV 89052
markanthonyrua@gmail.com www.mrlandlasvegas.com



1592 E. Hacienda Ave Las Vegas, NV 89119



Mark Anthony Rua
Brokers

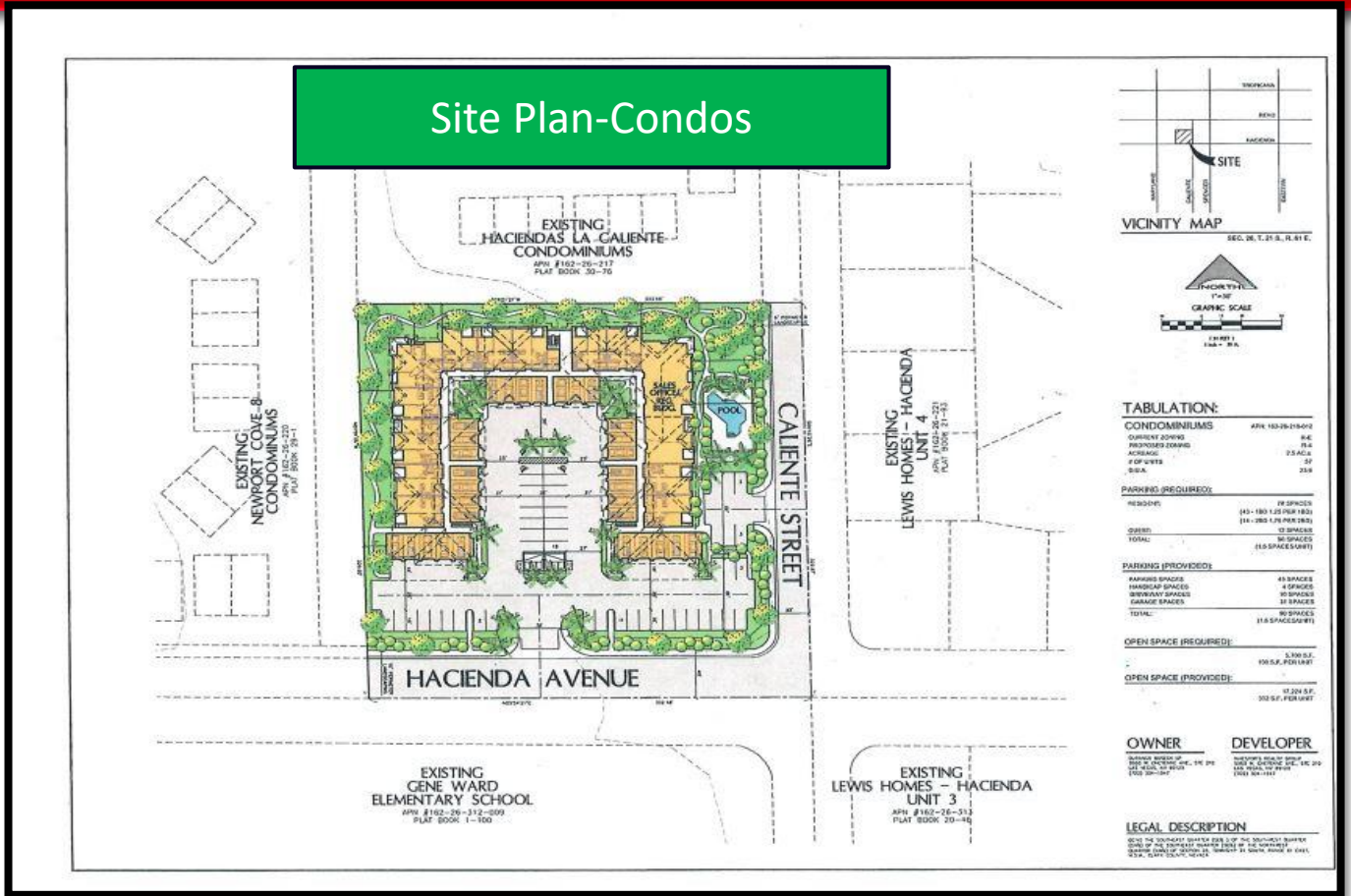
2855 St Rose Parkway, Suite 100, Henderson, NV 89052
markanthonyrua@gmail.com www.mrlandlasvegas.com

Office: 702-992-7534
Cell: 702-595-6244



The information contained herein is subject to verification and no liability for errors or omissions is assumed. The price, data, and other information are subject to change or the listing may be withdrawn without notice.

Site Plan and Elevations



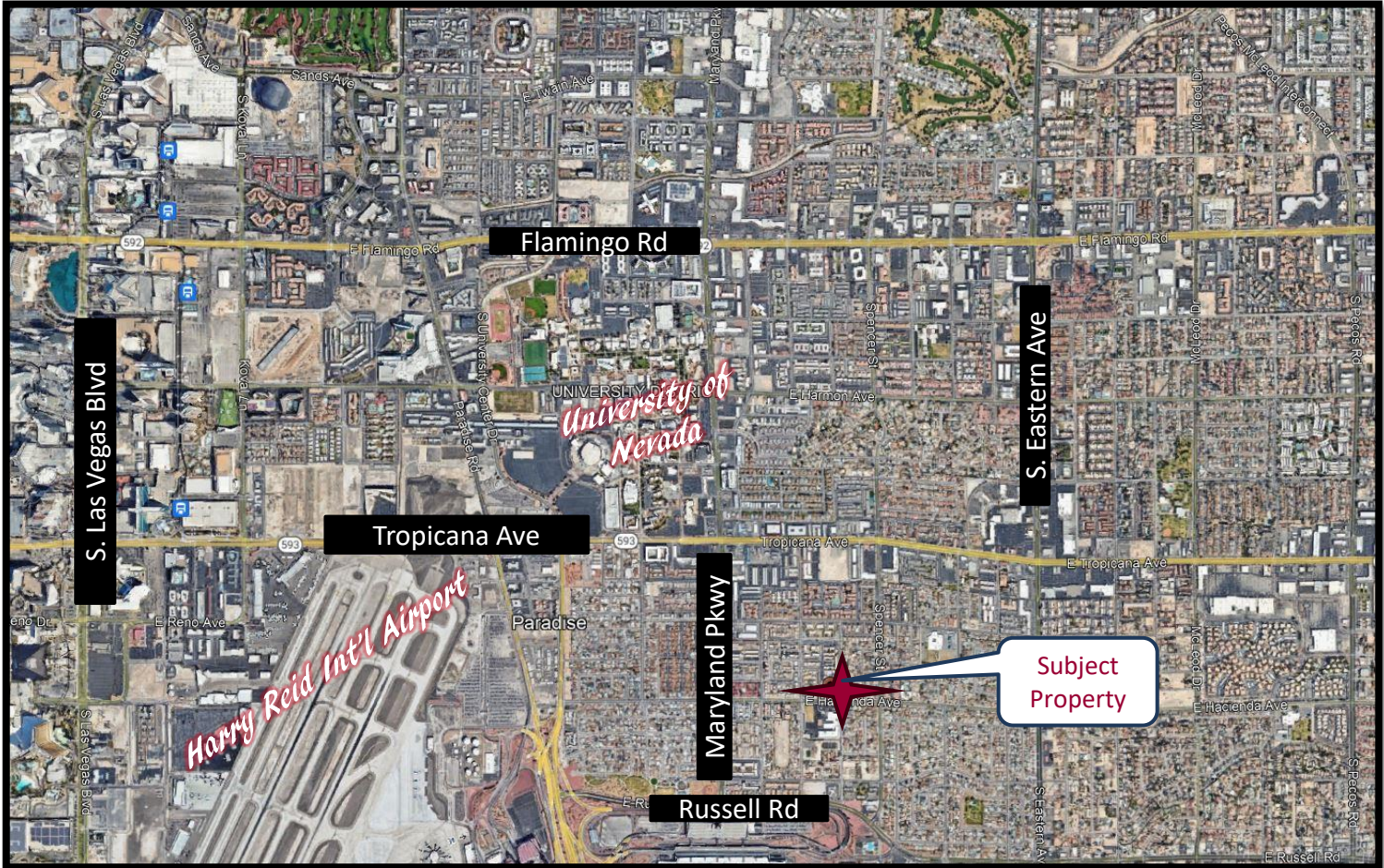
Mark Anthony Rua
Brokers

2855 St Rose Parkway, Suite 100, Henderson, NV 89052
markanthonyrua@gmail.com www.mrlandlasvegas.com

Office: 702-992-7534
 Cell: 702-595-6244



1592 E. Hacienda Ave Las Vegas, NV 89119



Mark Anthony Rua
Brokers

2855 St Rose Parkway, Suite 100, Henderson, NV 89052
markanthonyrua@gmail.com www.mrlandlasvegas.com

Office: 702-992-7534
Cell: 702-595-6244

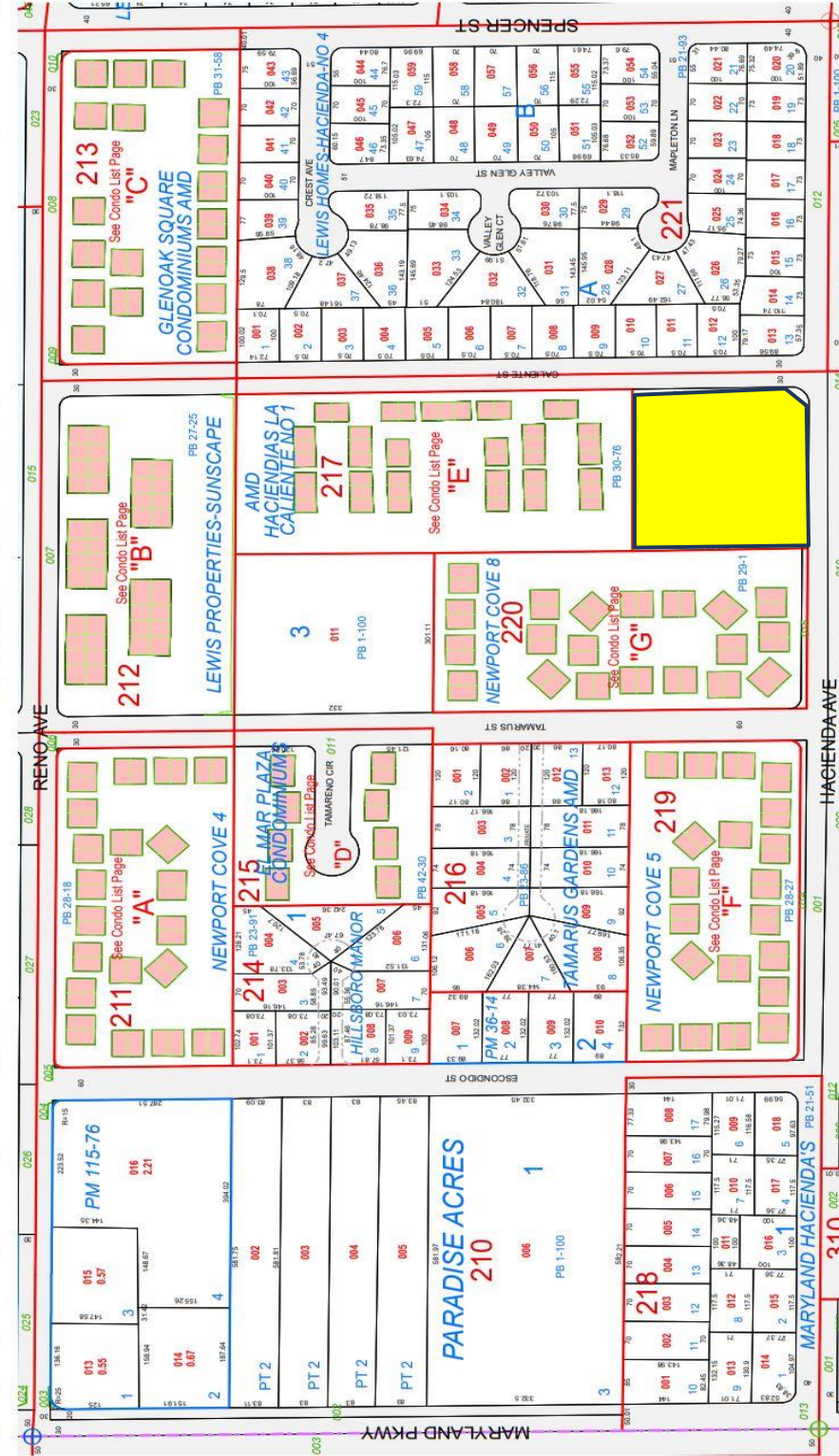


The information contained herein is subject to verification and no liability for errors or omissions is assumed. The price, data, and other information are subject to change or the listing may be withdrawn without notice.

NOTE: This map is compiled from official records, including surveys and deeds, but only contains the information required for assessment. See the recorded documents for more detailed legal information.
 USE THIS SCALE SET WHEN MAP REDUCED FROM TEXT ORIGINAL.

MAP LEGEND:
 MATCH / LEADER LINE
 HISTORIC LOT LINE
 HISTORIC SUB BOUNDARY
 HISTORIC P/MLD BOUNDARY
 SECTION LINE

202 PARCEL SUBISED NUMBER
 PB 24-45 PLAT RECORDING NUMBER
 176 177 17817
 5 BLOCK NUMBER
 5 LOT NUMBER
 5 1 5 1 1
 Rev. 5/9/2023
 Scale: 1" = 200'



TAX DIST 470

1592 E. Hacienda Ave Las Vegas, NV 89119



Mark Anthony Rua
Brokers
 REAL ESTATE CONSOLIDATED

2855 St Rose Parkway, Suite 100, Henderson, NV 89052
markanthonyrua@gmail.com www.mrlandlasvegas.com

Office: 702-992-7534
 Cell: 702-595-6244



The information contained herein is subject to verification and no liability for errors or omissions is assumed. The price, data, and other information are subject to change or the listing may be withdrawn without notice.