

**GORDON**  
COMMERCIAL REAL ESTATE BROKERAGE

**FOR LEASE :: 3286 ADELINE STREET, BERKELEY, CA**  
**Second Floor Office Suites in Berkeley Landmark Building**



**CONTACT: JONATHAN NEWMAN**

510 898-2122 • [jnewman@gordoncommercial.com](mailto:jnewman@gordoncommercial.com) • DRE# 02118083

### WELL-MAINTAINED BUILDING DESIGNED BY ARCHITECT JOHN GALEN HOWARD

#### SUITE 2

SIZE: ±345 rsf

LEASE RATE:  
\$695/month IG

+ UTILITY FEE of  
\$115/month

Includes all utilities  
except internet,  
janitorial

Available Now



#### SUITE 7

SIZE: ±500 rsf

LEASE RATE:  
\$1,700/month IG

+ UTILITY FEE of  
\$177/month

Includes all utilities  
except internet,  
janitorial

Available Now



**ZONED:** C-AC  
(Adeline Corridor  
Commercial)

- Two second-floor suites available in beautiful landmark building
- Elegant interior marble stairway to second floor offices and shared restrooms
- Both suites have high ceilings, nice natural light, stunning hardwood floors, baseboard heaters, and operable windows
- Architectural details include crown molding and solid-wood doors

- 4 blocks to Ashby BART station
- Easy street parking, and excellent freeway access
- Steps to the South Berkeley Farmers market every Tuesday
- In vicinity of many popular eateries, shops, services, 2 theatres, community organizations, and a thriving art and antiques cluster
- Walkable area in vibrant and diverse community



- In the early 20th century, this building was one of two banks anchoring the busy Lorin Business District's streetcar intersection – remaining a bank until the 1980s. Its architecture combines a restrained Mission revival façade with Beaux-Arts classical details and a modified Renaissance tempietto corner entrance. These features evoke a serious, solid edifice typical of financial institutions of that time.
- John Galen Howard is noted for his many classical buildings on the University of California campus in Berkeley. In this building, he used reinforced concrete and other fireproofing techniques as a response to the 1906 San Francisco earthquake and fire.



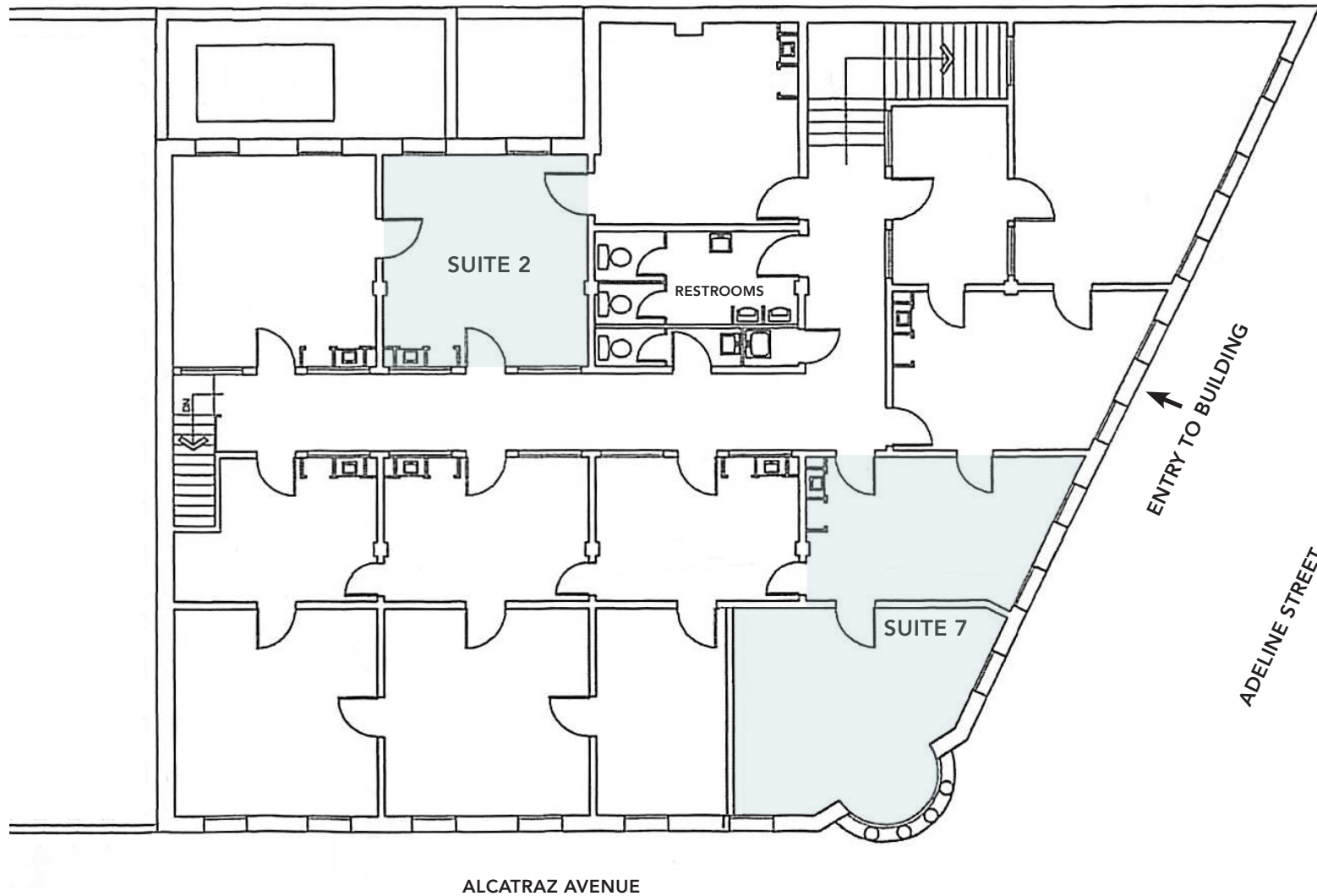


SUITE  
2 ▶



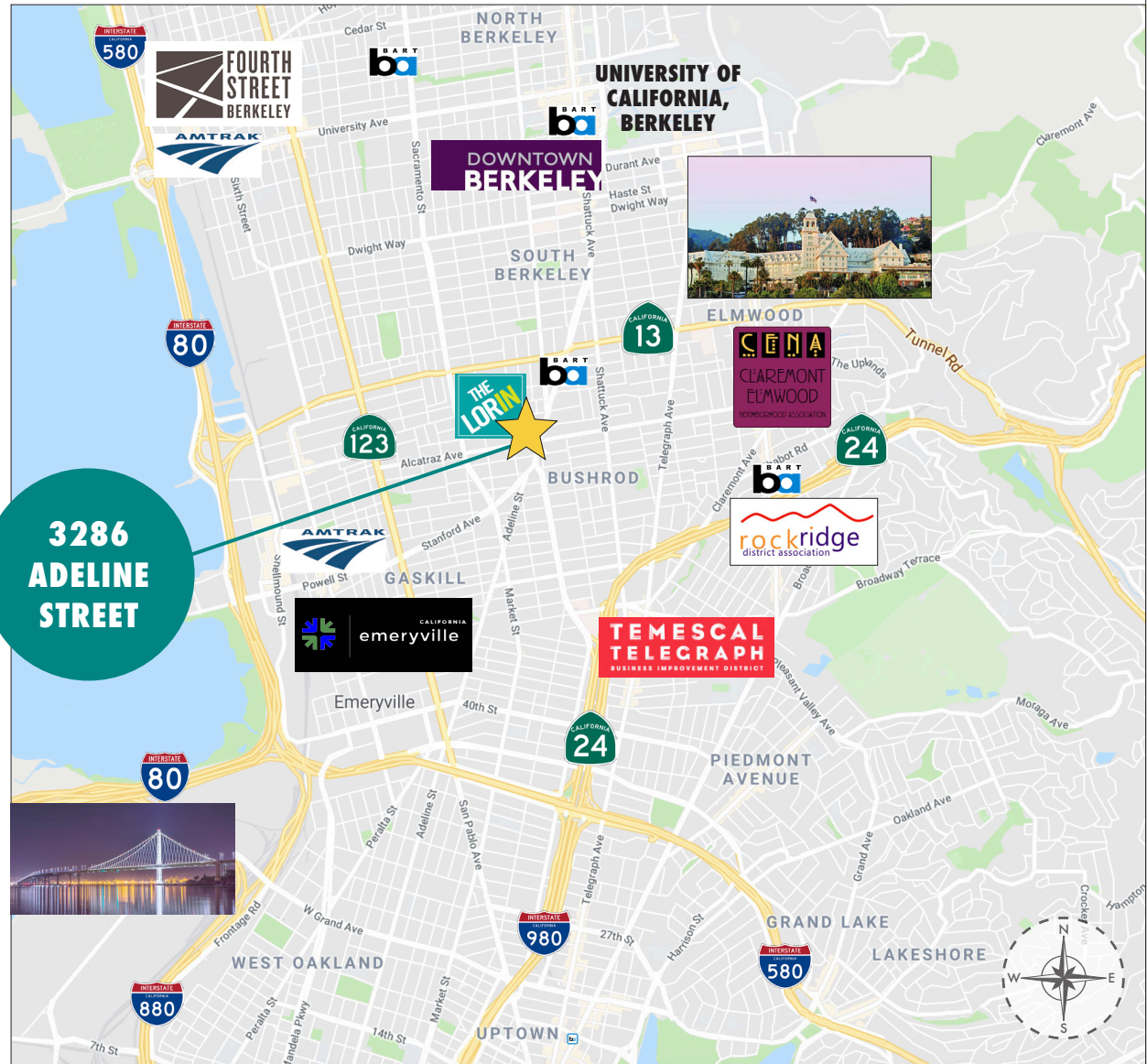
SUITE  
7 ▶





This drawing is intended to be used as an aid for planning. Though care was taken in drawing this floor plan, accuracy is not guaranteed.

- 4 blocks from Ashby BART
- Steps from popular Sweet Adeline Bakeshop
- Near fitness including Adeline Yoga, Berkeley Barbell, Equinox, and Innerstellar Pilates & Yoga Studio
- Tuesday Farmer's Market held weekly in the neighborhood
- Berkeley Flea Market is every weekend at Ashby BART
- Short walk to Berkeley Bowl, Sports Basement, Ashby Stage, Black Repertory Group, Berkeley Design Center, and The Starry Plough Pub
- Close to Downtown and UC Berkeley Campus
- Nearby eateries include Yeti Sports Bar and Restaurant, Milyar Café, Red Bay Coffee, The Vault Café, The Fat Fish, Lemat Ethiopian Restaurant, Zing Café, Domino's Pizza, Chen's Garden, Roses on Adeline, and Hoi Polloi Brewing Taproom
- 1.5 miles to Berkeley's Fourth Street Shopping District
- 1.5 miles to Emeryville Public Market
- 2 miles to Powell Street Plaza and Shops
- Easy freeway accessibility and SF Bay Bridge access
- Near several major cities via an extensive transportation system



The information contained herein has been provided by the owner of the property or other sources we deem reliable. We have no reason to doubt its accuracy, but we cannot guarantee it. All information should be verified prior to leasing.

# GORDON

COMMERCIAL REAL ESTATE BROKERAGE

3286 ADELINE STREET, BERKELEY, CA  
NEIGHBORHOOD



The information contained herein has been provided by the owner of the property or other sources we deem reliable. We have no reason to doubt its accuracy, but we cannot guarantee it. All information should be verified prior to leasing.