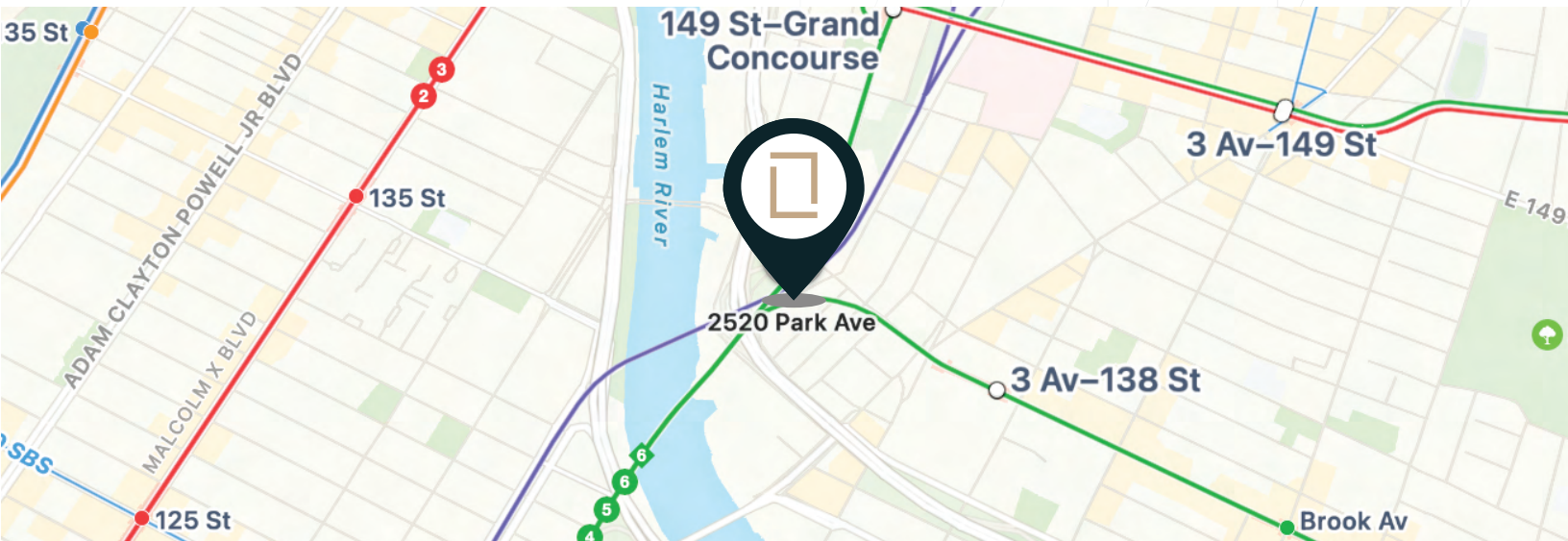




WAREHOUSE AVAILABLE

**203 CANAL ST W
(2520 PARK AVE)
BRONX, NY 10451**



LISTING BRIEF

Discover this prime warehouse with proximity to major highways and Midtown Manhattan. Benefit from unparalleled visibility and accessibility and public transit. Join a thriving business community in one of NYC's most central industrial neighborhoods.



- **8,750 SF (52 FT X 164 FT)**
- **18 FT CEILINGS (COLUMN FREE)**
- **2 STREET FRONTAGES (PASS THROUGH PROPERTY)**
- **OVERHEAD DOOR ON 2-WAY SIDE STREET**
- **ONE BLOCK FROM 4 & 5 TRAINS**
- **MINUTES FROM MAJOR DEEGAN EXPRESSWAY**
- **VISIBILITY FROM METRO-NORTH RAILROAD**
- **M1-4/R7 ZONING**



CONTACT



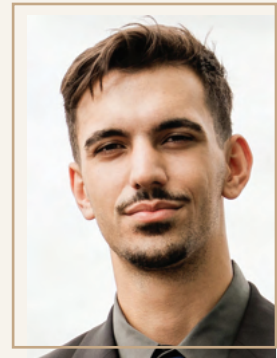
LUCA DICIERO
FOUNDER & CEO

(347) 242-0353
luca@nyspacefinders.com



FAISAL GILANI
ASSOCIATE BROKER

(925) 285-3075
faisal@nyspacefinders.com



DAMIAN DAKAS
LICENSED REAL ESTATE
SALESPERSON

(516) 840-2002
damian@nyspacefinders.com

All Information supplied in this marketing presentation and/or flyer is from sources deemed reliable and is furnished subject to errors, omissions, modifications, removal of listings from sale/lease and to any listing condition. Any square footage, dimensions, floor plans and/or technical data set forth are approximations and are subject to further elaboration/confirmation.