

Boones Ferry Business Park, Building B

12,492 SF FREESTANDING BUILDING

17858 SW UPPER BOONES FERRY RD | DURHAM, OR 97224



FOR LEASE

Stu Peterson, SIOR
503.972.7288
stu@macadamforbes.com
Licensed in OR & WA

2 Centerpointe Drive, Suite 500 | Lake Oswego, OR 97035 | WWW.MACADAMFORBES.COM | 503.227.2500

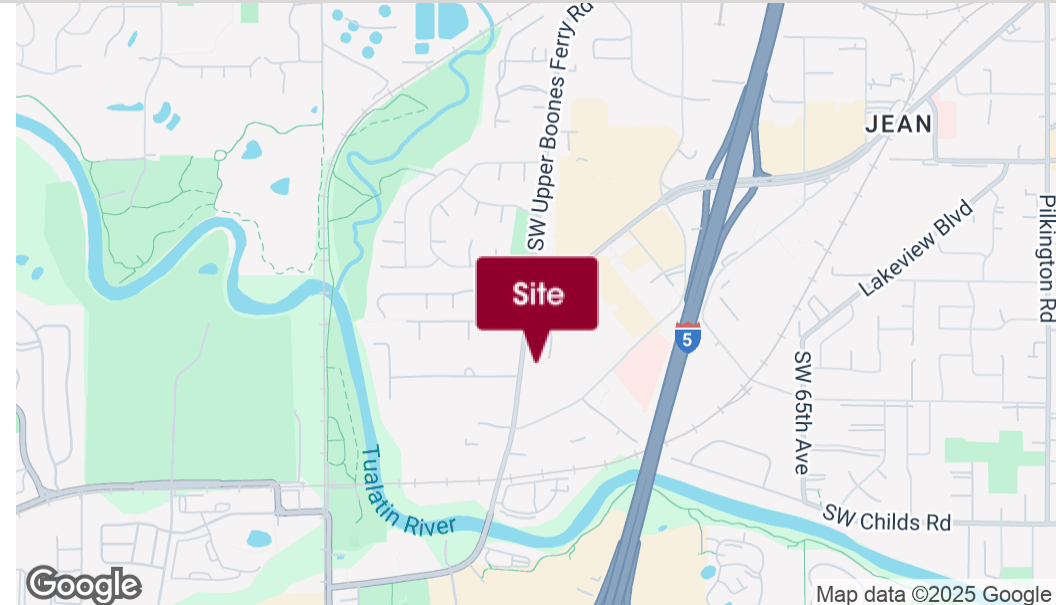
All of the information contained herein was obtained either from the owner or other parties we consider reliable. We have no reason to doubt its accuracy, however we do not guarantee it.



Map data ©2024 Google Imagery ©2024 Airbus, Maxar Technologies, Metro, Portland Oregon

FOR LEASE

17858 SW Upper Boones Ferry Rd, Durham, OR 97224



PROPERTY DESCRIPTION

Boones Ferry Business Park, Building B is a stand-alone flex building with dock and grade-level loading adjacent to Bridgeport Village and two minutes to interstate 5 at the Lake Oswego exit.

PROPERTY HIGHLIGHTS

- Concrete tilt with brick masonry
- Dock High & Grade Level Doors: 1 of each
- Clear height : 16'
- Parking: 41 spaces

LOCATION DESCRIPTION

Immediate access to I-5 at the Lake Oswego exit. Located within walking distance from Bridgeport Mall, Whole Foods, REI and numerous restaurants.

OFFERING SUMMARY

Lease Rate:	\$17.25 SF/yr (NNN)
NNN:	\$0.255/SF/month
Available SF:	12,492 SF
Office:	9,213 SF
Warehouse:	3,279 SF
Building Size:	12,492 SF



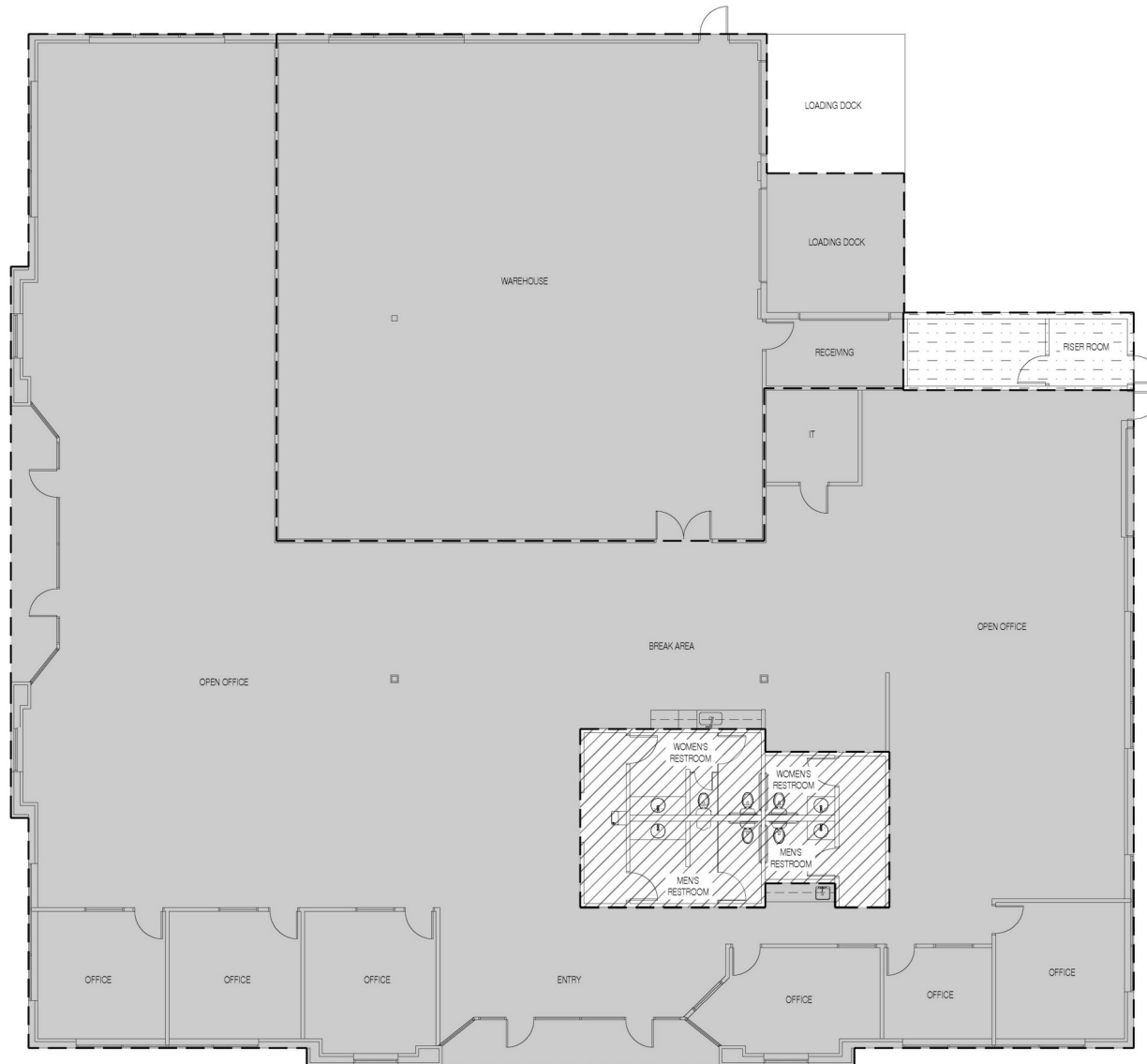
Stu Peterson, SIOR
503.972.7288
stu@macadamforbes.com
Licensed in OR & WA

All of the information contained herein was obtained either from the owner or other parties we consider reliable. We have no reason to doubt its accuracy, however we do not guarantee it.

MACADAMFORBES.COM | 503.227.2500

FOR LEASE

17858 SW Upper Boones Ferry Rd, Durham, OR 97224



Stu Peterson, SIOR
503.972.7288
stu@macadamforbes.com
Licensed in OR & WA

All of the information contained herein was obtained either from the owner or other parties we consider reliable. We have no reason to doubt its accuracy, however we do not guarantee it.

MACADAMFORBES.COM | 503.227.2500