

# PACKARD PROFESSIONAL BUILDING

41690 Enterprise Circle North, Temecula, CA 92590

**OFFICE SUITE  
FOR LEASE**



**922± SF SUITE**  
AVAILABLE FEBRUARY 1,  
2025



**\$1.56 PSF MG**  
STARTING MONTHLY  
LEASE RATE

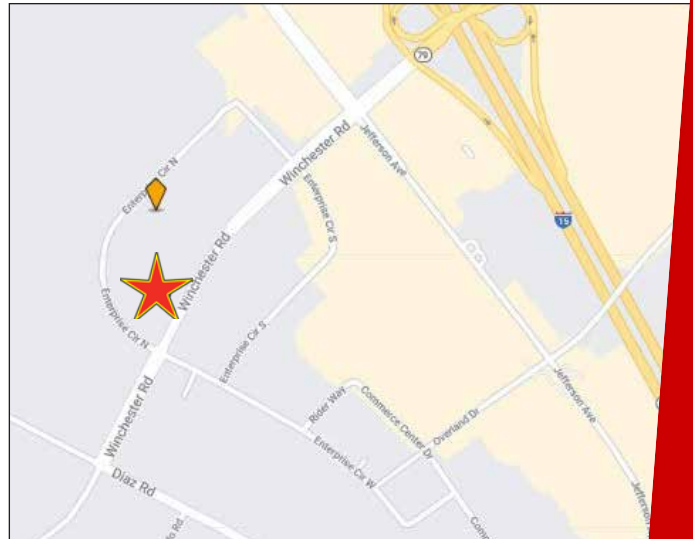


## Suite 102 For Lease

- 922± SF
- \$1.56 PSF/MG (\$1,438.32/Month)
- Available February 1, 2025

## Features:

- Easy access to Interstate 15



**Exclusively Marketed By:**

**Luanne Palmer**  
Vice President  
CA License # 01444893  
(951) 491-6321  
lpalmer@westmarcre.com



**Jerry Palmer**  
Senior Vice President  
CA License # 01442207  
(951) 491-6322  
jpalmer@westmarcre.com



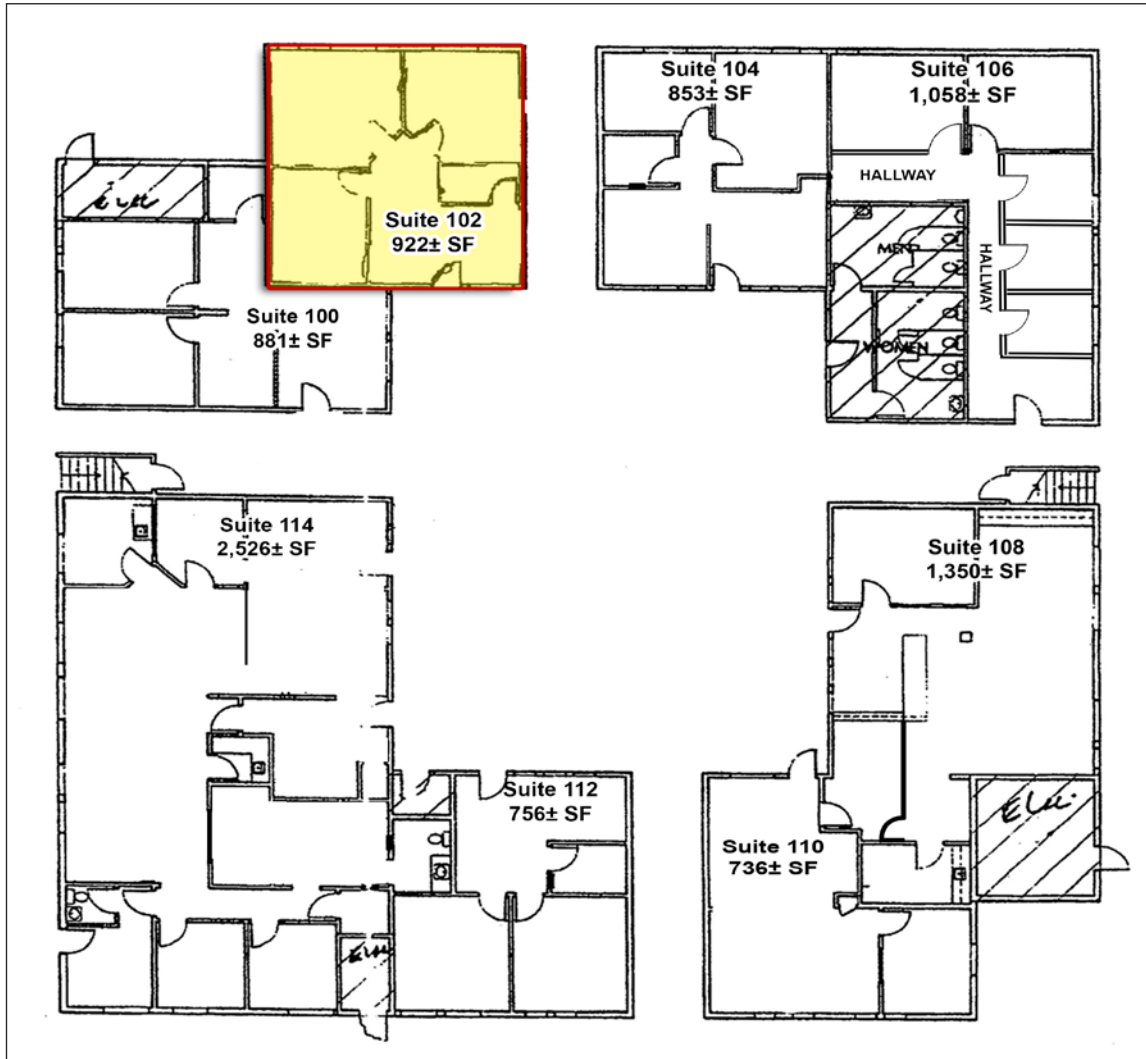
41623 Margarita Road, Suite 100, Temecula, CA 92591 | Ph: 951.491.6300 | [www.WestMarCRE.com](http://www.WestMarCRE.com)  
The above information, while not guaranteed, has been secured from sources we believe to be reliable.  
Floor plan, site plan, price, tenant mix, and availability subject to change without notice.

# PACKARD PROFESSIONAL BUILDING

41690 Enterprise Circle North, Temecula, CA 92590

**OFFICE SUITE  
FOR LEASE**

## FIRST FLOOR PACKARD PROFESSIONAL BUILDING



### 1st Floor Office

| Suite | SF   | Description | Lease Rate (MG) | Monthly Rate |
|-------|------|-------------|-----------------|--------------|
| 102   | 922± |             | \$1.56          | \$1,438.32   |



41623 Margarita Road, Suite 100, Temecula, CA 92591 | Ph: 951.491.6300 | [www.WestMarCRE.com](http://www.WestMarCRE.com)  
The above information, while not guaranteed, has been secured from sources we believe to be reliable.  
Floor plan, site plan, price, tenant mix, and availability subject to change without notice.