



SHARED OFFICE SPACE FOR LEASE

BACCHUS SIGNATURE SERIES

9910 Irvine Center Drive • Irvine Spectrum, CA 92618



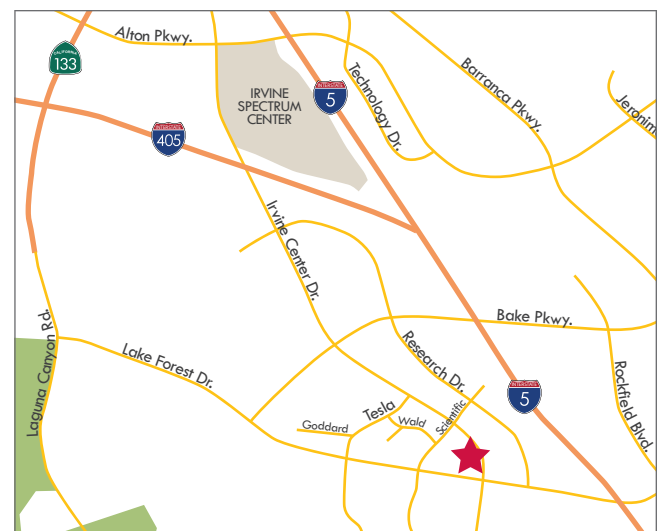
Exclusively listed by:

Dave Smith
Senior Vice President
License ID# 01195186
949.790.3134
dsmith@leeirvine.com

Travis Watts
Senior Associate
License ID# 01927498
949.790.3140
twatts@leeirvine.com

PROPERTY FEATURES

- Upscale creative executive suite & collaborative team space.
- High profile location with immediate access to 5, 405, & 133 FWYS
- Close proximity to Irvine Spectrum Entertainment Center & Los Olivos Marketplace
- Single/multiple offices and/or workstations available
- Shared use of conference rooms, reception, kitchen, restrooms, etc.
- Flexible lease terms - MTM or short term
- Call for additional details





SHARED OFFICE SPACE FOR LEASE

BACCHUS SIGNATURE SERIES

9910 Irvine Center Drive • Irvine Spectrum, CA 92618

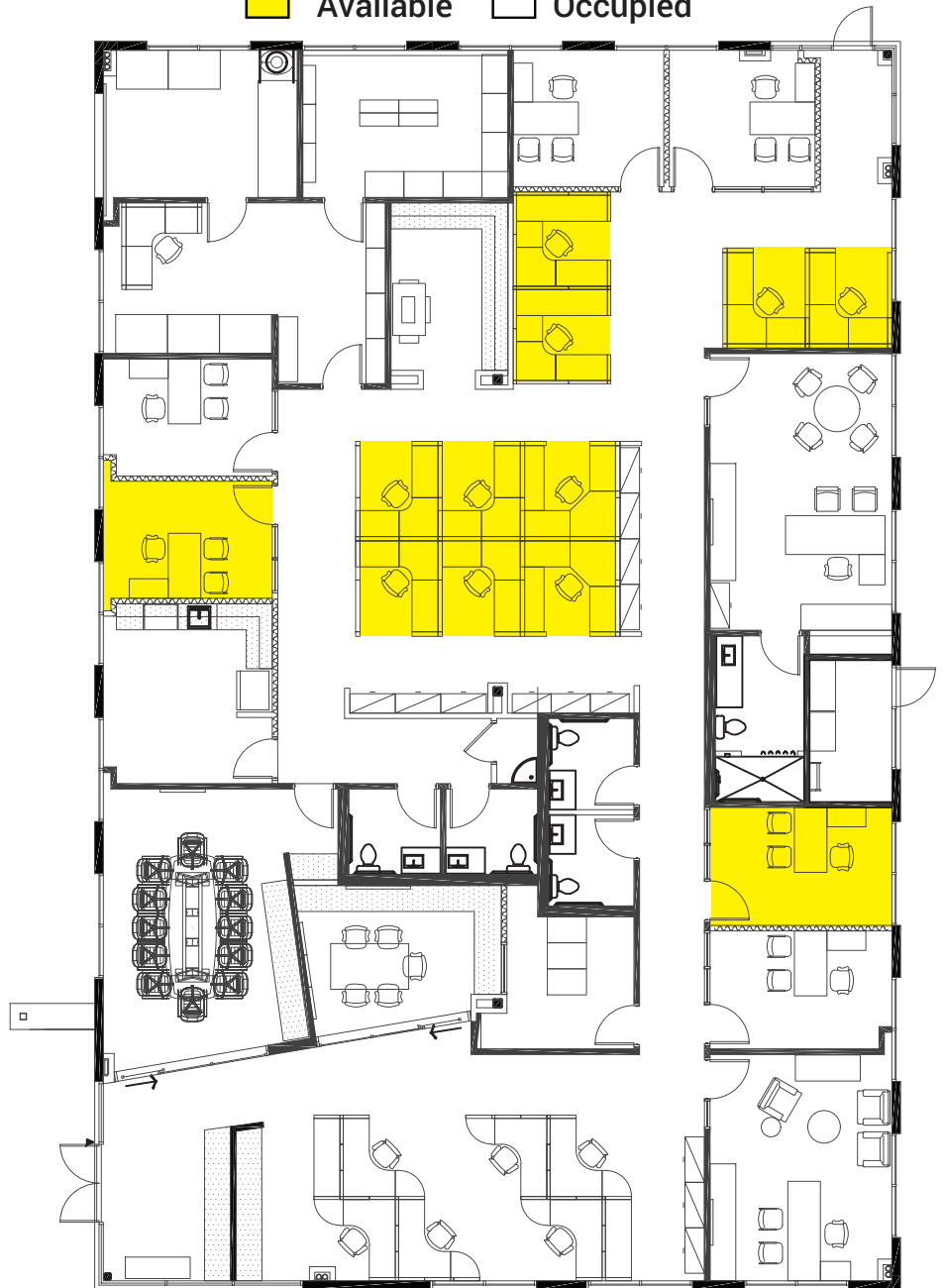


Exclusively listed by:

Dave Smith
 Senior Vice President
 License ID# 01195186
 949.790.3134
 dsmith@leeirvine.com

Travis Watts
 Senior Associate
 License ID# 01927498
 949.790.3140
 twatts@leeirvine.com

Available Occupied



AMENITIES & SERVICES AT 9910 IRVINE CENTER DRIVE

- | | | | |
|-------------|------------------|----------------|-------------|
| 24/7 Access | Bike Rack | Coffee/Tea | Door w/Lock |
| Entry | Filming Allowed | Filtered Water | Furnished |
| Kitchen | Mailbox Services | Meeting Rooms | Parking |
| Phone | Print/Scan/Copy | Room Set-up | Storage |
| TV/Monitor | Video Conference | Whiteboard | Window View |

SPACE TYPES AT 9910 IRVINE CENTER DRIVE

- | | | | |
|---------------|---------------|--------|------|
| Meeting Space | Training Room | Office | Desk |
|---------------|---------------|--------|------|



SHARED OFFICE SPACE FOR LEASE

BACCHUS SIGNATURE SERIES

9910 Irvine Center Drive • Irvine Spectrum, CA 92618

LEASING MENU



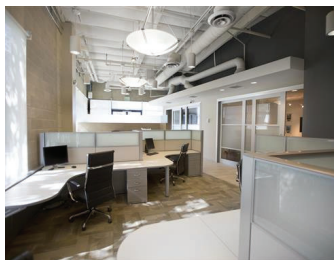
Large Private Cubicle

Large cubicle with overhead storage, fire cabinet drawer, and 2 storage drawers in a modern office.



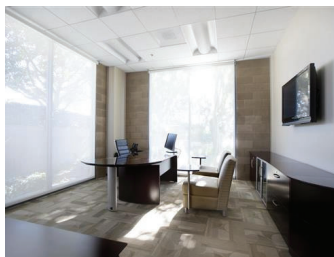
Extra-Large Private Cubicle

Very nice enclosed private cubicle with ample storage in quiet, professional and modern office.



Large Dedicated Desk

Large desk in a modern office. Access to office amenities, free parking, and free WIFI.



Private/Executive Office

Furnished office with extra large desk, guest chairs, and floor-to-ceiling windows to give lots of natural light. Also includes a large screen TV monitor in the office.



SHARED OFFICE SPACE FOR LEASE

BACCHUS SIGNATURE SERIES

9910 Irvine Center Drive • Irvine Spectrum, CA 92618

