

**14,673 SF RETAIL  
BUILDING AVAILABLE**



**FORMER RITE AID BUILDING**  
14701 Pearl Rd, Strongsville, OH 44136

Vincenzo Calabrese  
VincenzoCalabrese@HannaCRE.com  
216.861.5286

**CONTACT:**

Sean Wall  
SeanWall@HannaCRE.com  
216.861.5498

# 14,673 SF RETAIL BUILDING AVAILABLE

14701 Pearl Rd, Strongsville, OH 44136

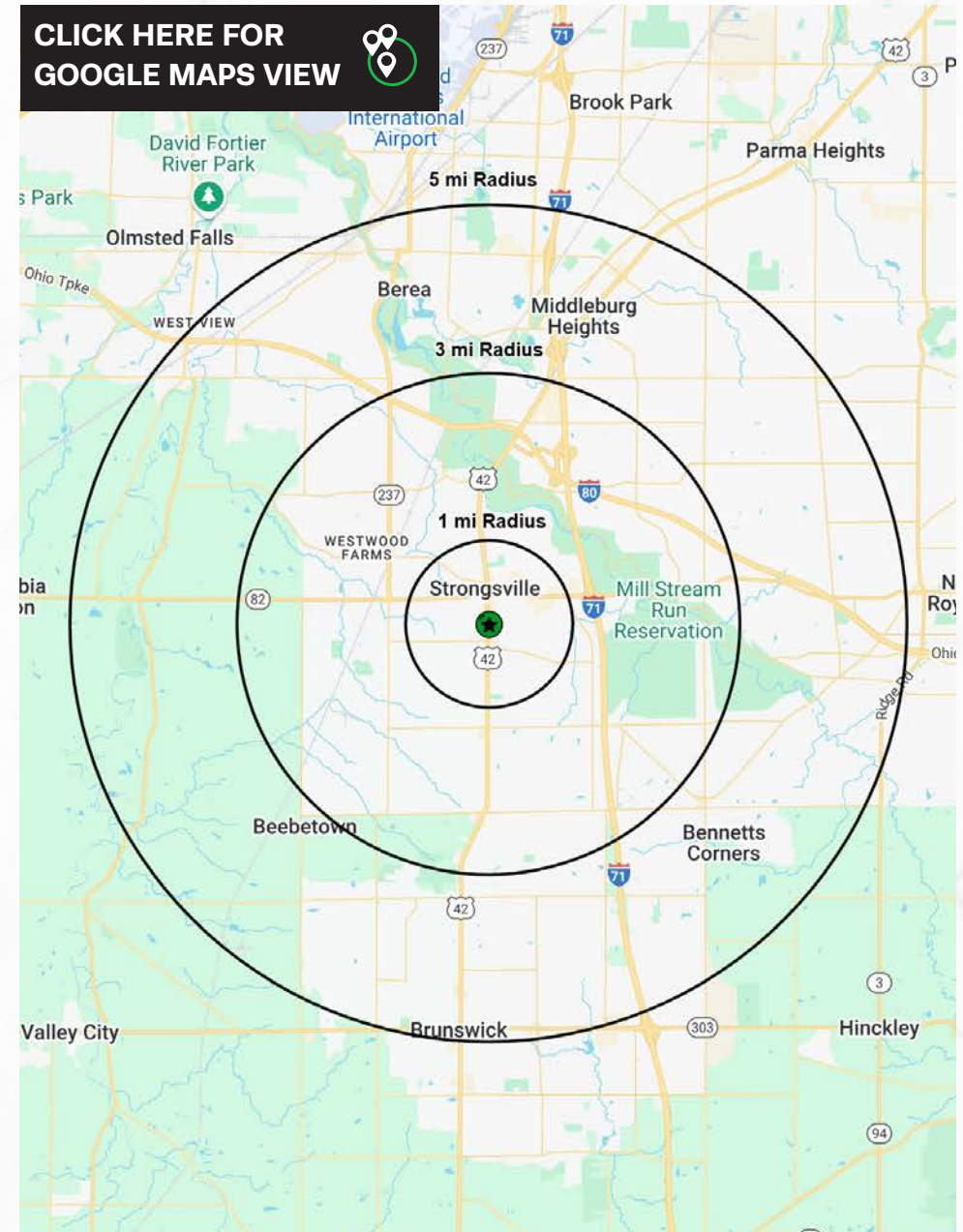
## PROPERTY OVERVIEW

### PROPERTY SUMMARY

- Freestanding 14,673 SF Building at signalized intersection on 1.8 acres
- Building Available for Lease/Sale or Redevelopment
- Over 27,000 VPD pass the site
- There are over 48,000 people within a 10 minute drive time
- Asking \$20/SF NNN
- Please contact broker to discuss terms of a sale

DEMOGRAPHICS	1-MILE	3-MILE	5-MILE
POPULATION	7,223	49,592	129,263
HOUSEHOLDS	3,042	20,647	54,172
AVERAGE HH INCOME	\$123,873	\$134,277	\$119,887
MEDIAN HH INCOME	\$94,738	\$105,056	\$93,900
DAYTIME POPULATION	11,375	37,839	98,381

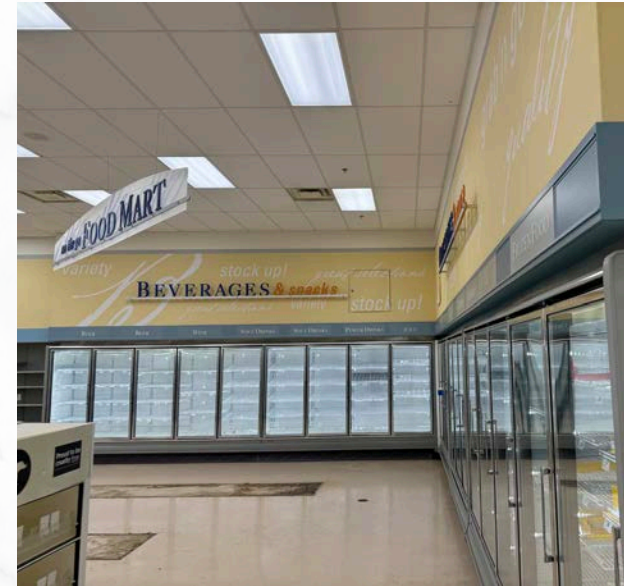
[CLICK HERE FOR GOOGLE MAPS VIEW](#)



# 14,673 SF RETAIL BUILDING AVAILABLE

14701 Pearl Rd, Strongsville, OH 44136

PICTURES



# 14,673 SF RETAIL BUILDING AVAILABLE

14701 Pearl Rd, Strongsville, OH 44136

MICRO AERIAL



# 14,673 SF RETAIL BUILDING AVAILABLE

14701 Pearl Rd, Strongsville, OH 44136

MACRO AERIAL

