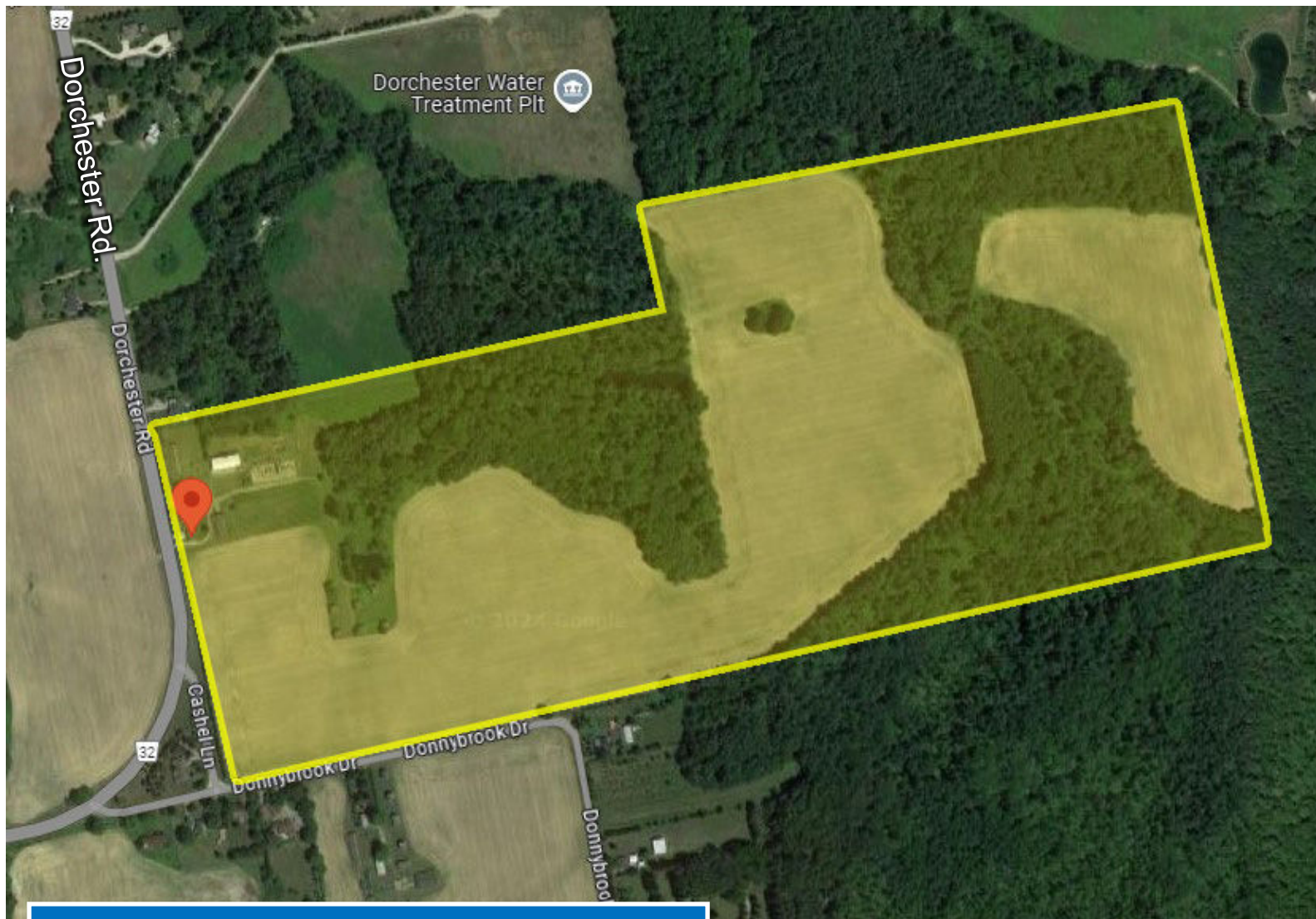


Future Development Site



+/- 130 Acres

2710-2714 Dorchester Rd.
Dorchester, ON

FOR SALE

Stacey Dale

Broker

226-374-2916 direct

stacey-remax@bell.net

RE/MAX
ADVANTAGE
Realty Ltd. Brokerage

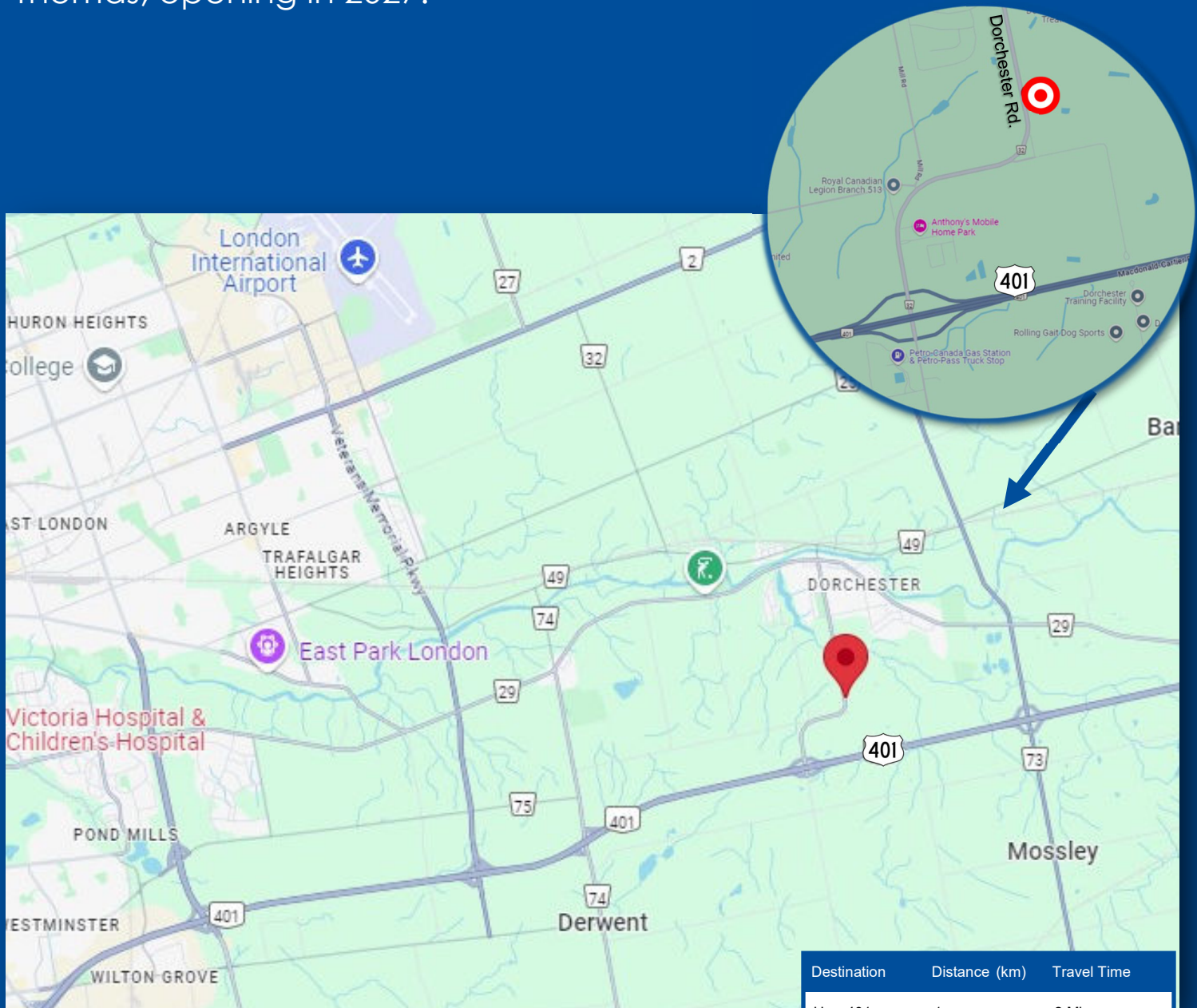
151 Pine Valley Blvd.
London, ON N6K 1R5
519-649-6000



Located at intersection of the 401 and Dorchester Rd.
Exit #199.

London, Ontario is one of Canada's fastest growing cities and is expected to see an area population jump by more than 50%.

London's strong economy has been seeing new investments from companies such as Maple Leaf Foods, Amazon and others. Volkswagen is building a \$7-billion electric vehicle battery plant in St. Thomas, opening in 2027.



AMENITIES



Contact Stacey

STACEY DALE

Broker

Direct: 226-374-2916

Office: 519-649-6000

stacey-remax@bell.net



RE/MAX
ADVANTAGE
Realty Ltd. Brokerage*

151 Pine Valley Blvd.
London, ON N6K 1R5