

FOR SALE

Nye County, NV

Alfalfa Farm with Pivots, Water Rights

160 ACRES | APN 011-361-09

1121 Keys Rd Railroad Valley, NV 89049

OFFERED AT \$599,990



**COLDWELL BANKER
COMMERCIAL**
PREMIER



COLDWELL BANKER
PREMIER REALTY
DEVELOPER SERVICES

John McClelland
Vice President, Research
702 505 6354
License S.0169443
John.McClelland@cbvegas.com

Brian Krueger
Senior VP, Strategic Services
702 234 4373
NRE License BS.19256
Brian.Krueger@cbvegas.com



Nye County NV Alfalfa Farm with Pivots, Water Rights

1121 Keys Rd Railroad Valley, NV 89049



PROPERTY DESCRIPTION

Existing alfalfa farm with two pivots and water rights. The asset is located in Nye County.

LOCATION DESCRIPTION

This farm is located about one hour and twenty minutes from Tonopah and one hour from Rachel. There are numerous producing farms within the immediate area, just west of the Quinn Canyon Range.

Lat/Long

38.247732, -115.755102

<https://goo.gl/maps/xLvqLRsKmNaWmmKx8>



COLDWELL BANKER
PREMIER REALTY
DEVELOPER SERVICES



COLDWELL BANKER
COMMERCIAL
PREMIER

FOR SALE

Nye County NV Alfalfa Farm with Pivots, Water Rights

1121 Keys Rd Railroad Valley, NV 89049



FOR SALE

Nye County NV Alfalfa Farm with Pivots, Water Rights

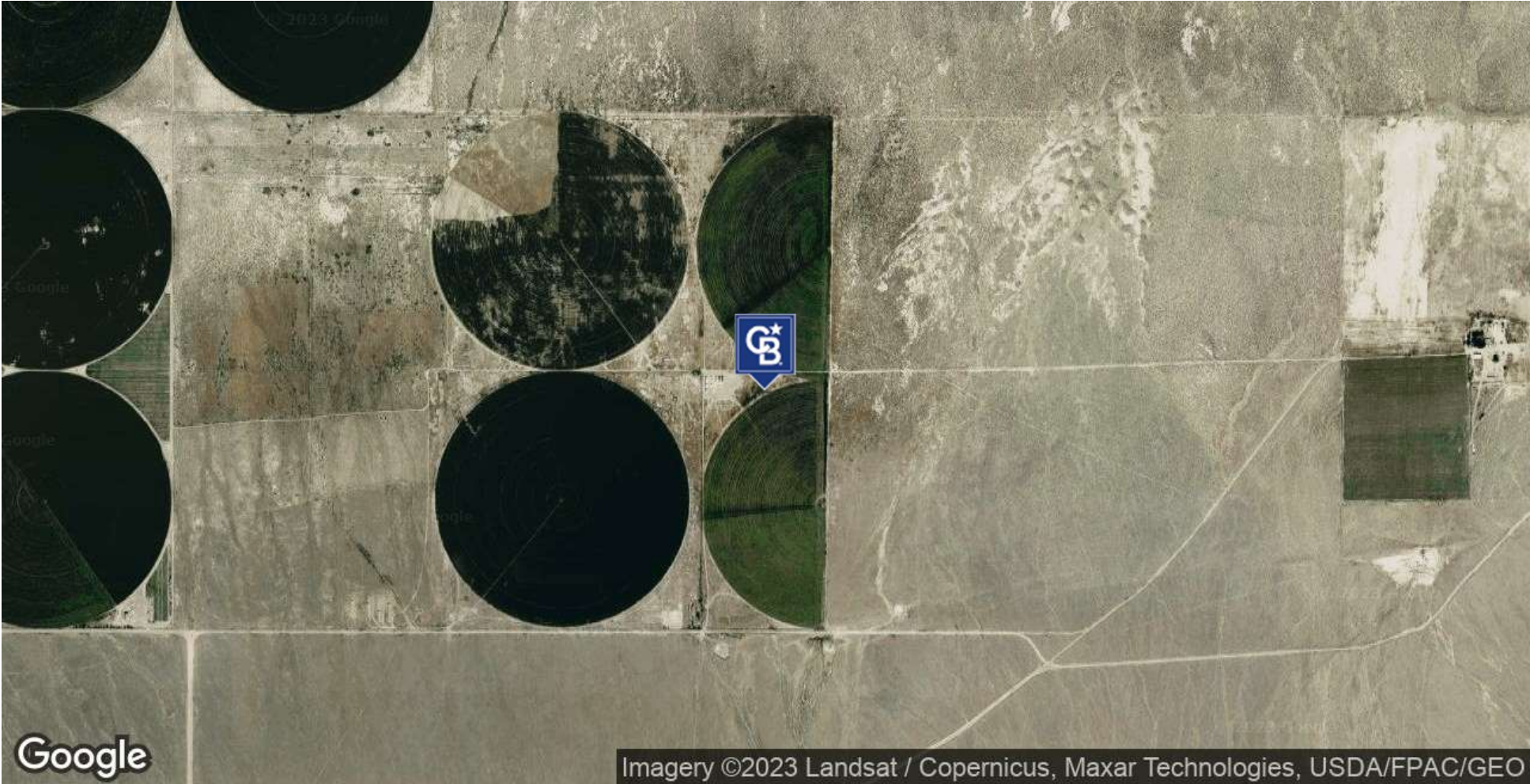
1121 Keys Rd Railroad Valley, NV 89049



FOR SALE

Nye County NV Alfalfa Farm with Pivots, Water Rights

1121 Keys Rd Railroad Valley, NV 89049



FOR SALE

Nye County NV Alfalfa Farm with Pivots, Water Rights

1121 Keys Rd Railroad Valley, NV 89049

