



600
SIGMAN RD
CONYERS, GA
30013

5.8+/- Acres For Sale

DOUG BURGGRAAF

Vice President

770.601.3620

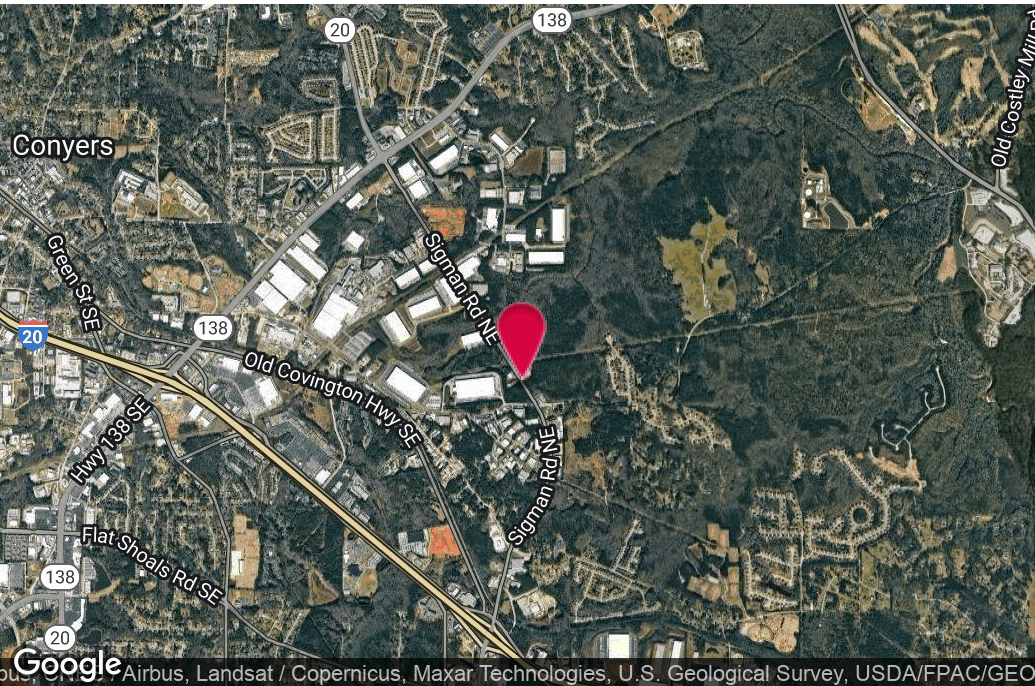
dburggraaf@kingindustrial.com

King Industrial
Realty, Inc.

Industrial • Commercial • Investment

404.942.2000 | kingindustrial.com

5.8+/- ACRES
FOR SALE



PROPERTY HIGHLIGHTS

- Zoned ID, City of Conyers
- Sewer Adjacent
- Located at Signalized Intersection
- 1+/- Mile from I-20
- Great Industrial, Self Storage Site (Permitted), or Retail

OFFERING SUMMARY

Lot Size:	5.8 Acres
Zoning:	ID

DOUG BURGGRAAF

Vice President

770.601.3620

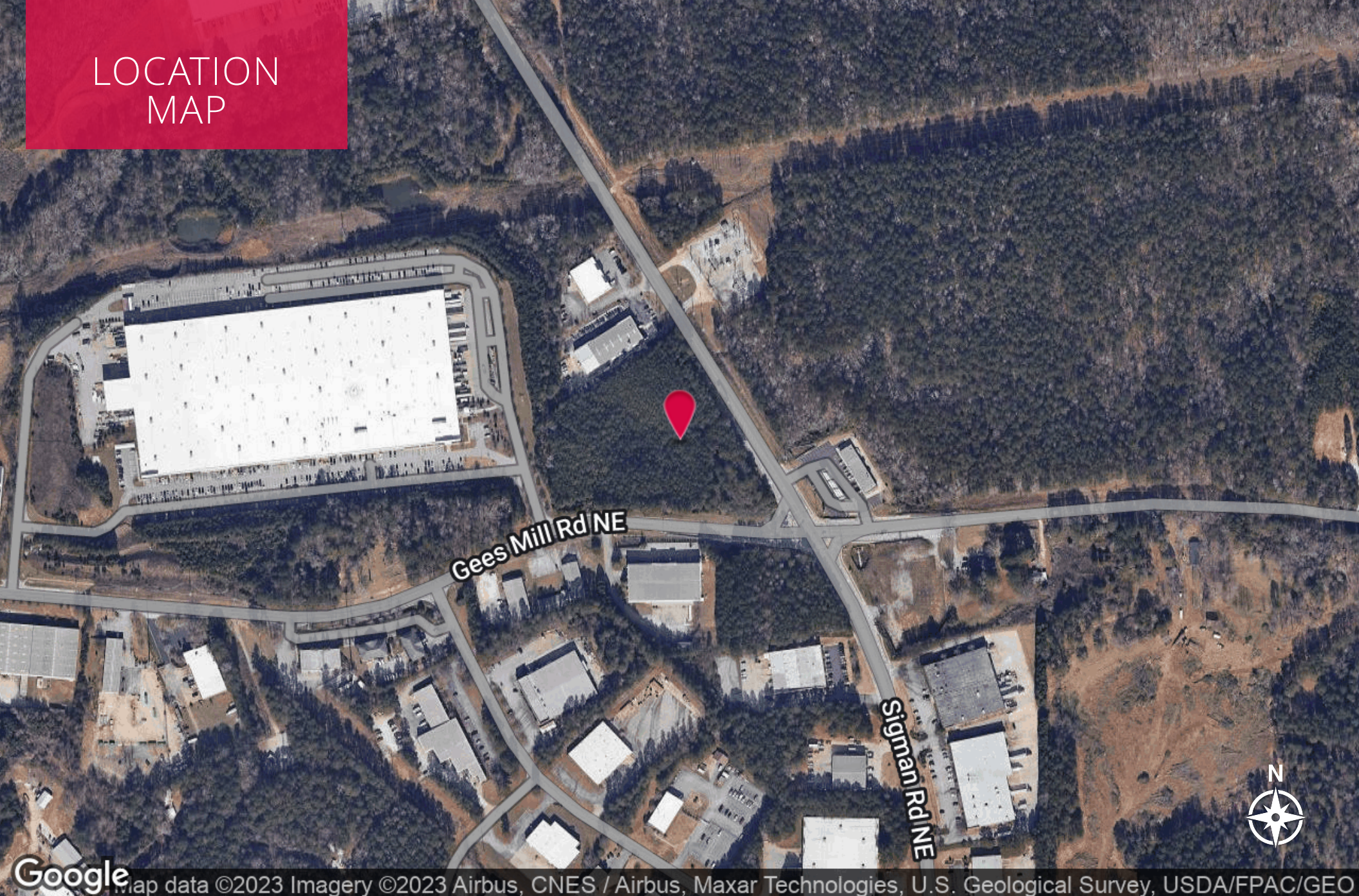
dburggraaf@kingindustrial.com

Every effort has been made to provide accurate information, but no liability is assumed for errors or omissions.



Industrial • Commercial • Investment
404.942.2000 | kingindustrial.com

LOCATION MAP



Google Map data ©2023 Imagery ©2023 Airbus, CNES / Airbus, Maxar Technologies, U.S. Geological Survey, USDA/FPAC/GEO

DOUG BURGGRAAF

Vice President

770.601.3620

dburggraaf@kingindustrial.com

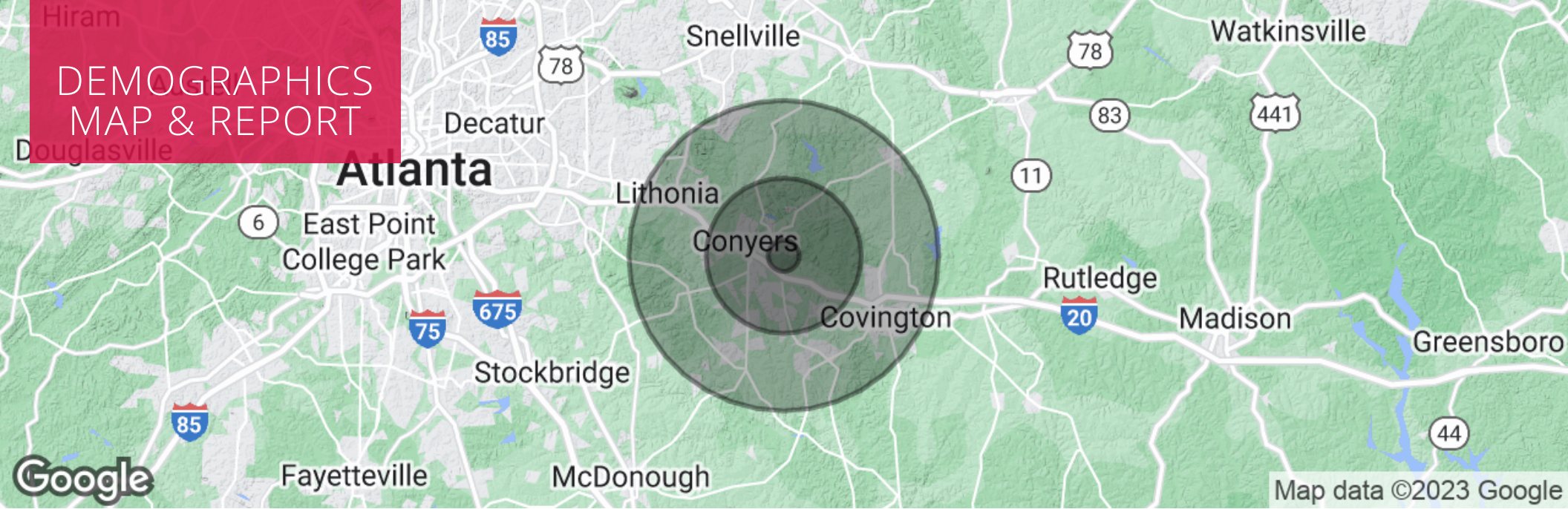
Every effort has been made to provide accurate information, but no liability is assumed for errors or omissions.

King Industrial
Realty, Inc.

CORFAC
INTERNATIONAL

Industrial • Commercial • Investment
404.942.2000 | kingindustrial.com

DEMOGRAPHICS MAP & REPORT



POPULATION

	1 MILE	5 MILES	10 MILES
Total Population	3,512	73,209	251,194
Average Age	30.8	36.3	37.0
Average Age (Male)	24.8	33.0	34.0
Average Age (Female)	33.8	38.2	38.7

HOUSEHOLDS & INCOME

	1 MILE	5 MILES	10 MILES
Total Households	1,358	27,500	92,923
# of Persons per HH	2.6	2.7	2.7
Average HH Income	\$51,190	\$68,984	\$71,107
Average House Value	\$87,556	\$141,255	\$160,136

DOUG BURGGRAAF

Vice President

770.601.3620

dburggraaf@kingindustrial.com

Every effort has been made to provide accurate information, but no liability is assumed for errors or omissions.



Industrial • Commercial • Investment
404.942.2000 | kingindustrial.com

Business Parkway

Gees Mill Road Northeast

Sigman Road Northeast

EXCLUSIVELY LISTED BY:

DOUG BURGGRAAF

Vice President

dburggraaf@kingindustrial.com

 770.601.3620

KING Industrial
Realty, Inc.

Industrial • Commercial • Investment
404.942.2000 | kingindustrial.com