



Colliers

Industrial Facility For Sale or Lease

500 Confederate Ave
Portsmouth, VA

Ricky Anderson

Executive Vice President
+1 757 217 1892
ricky.anderson@colliers.com

Drew Ott

Associate
+1 757 228 1826
drew.ott@colliers.com

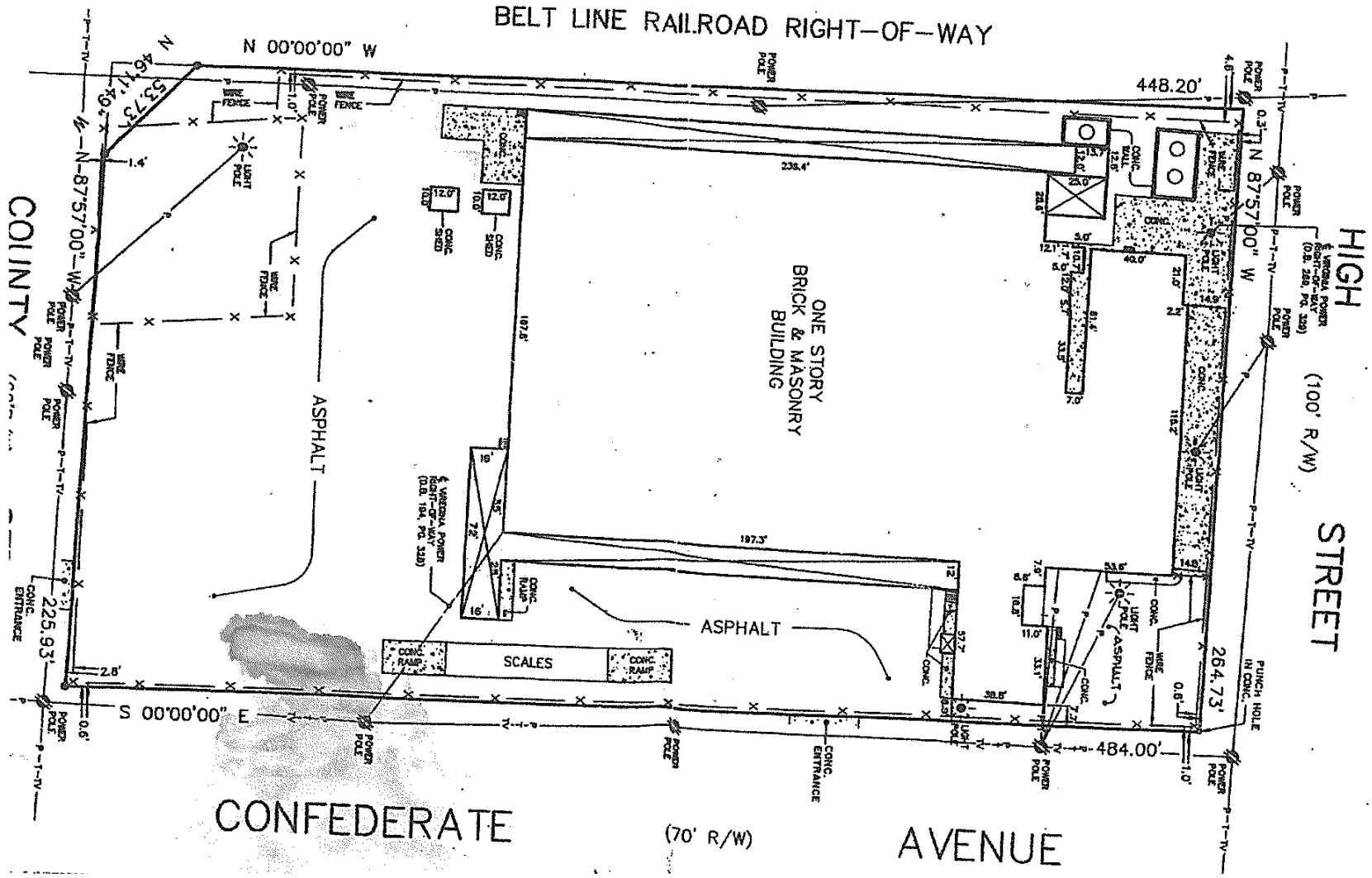
150 West Main Street
Suite 1100
Norfolk, VA 23510
P: +1 757 490 3300

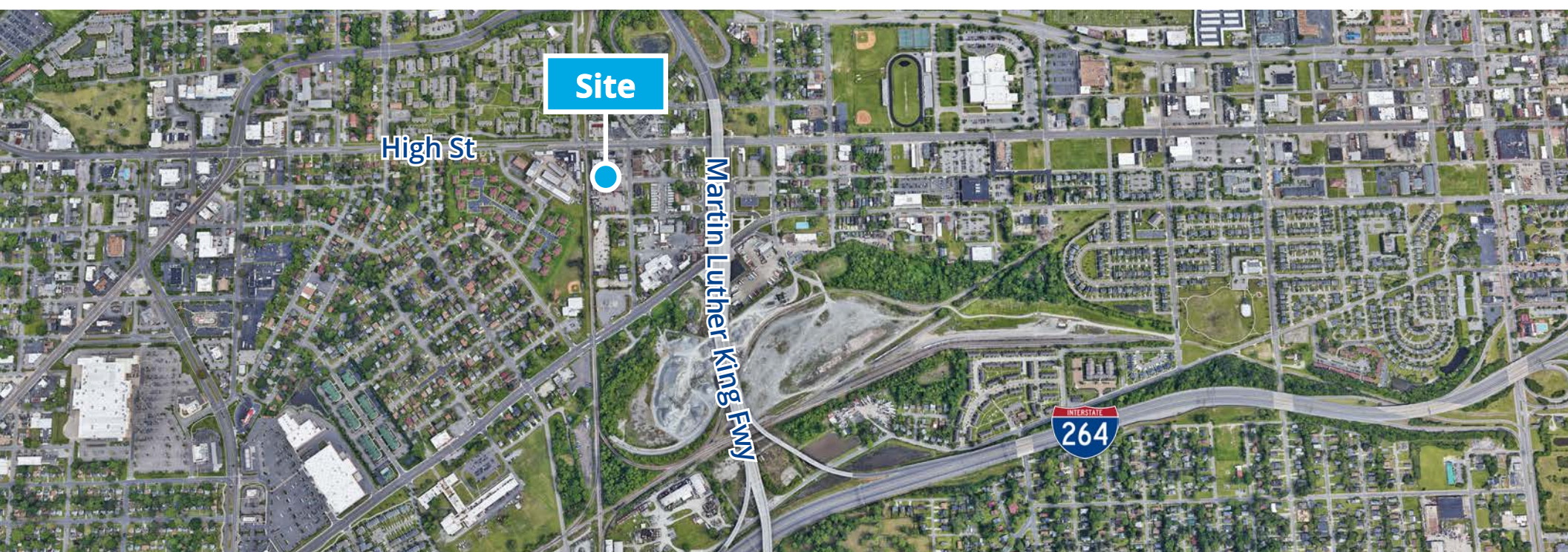
Features

- ±69,000 RSF industrial facility for sale or lease
 - Majority warehouse with ±1,500 RSF office space
- Located on 2.75 AC site
- Zoned IL (Light Industrial)
- Easily subdividable for multi-tenant use
- Loading: 16 docks and 4 grade level doors
- 3-phase, 480V power
- Close proximity to Port of Virginia facilities (NNMT, NIT, VIG, PMT)
- Sale Price: \$3,060,000
- Lease Rate: Negotiable
 - Strong Tenant Improvement package available for creditworthy tenant



Site Plan



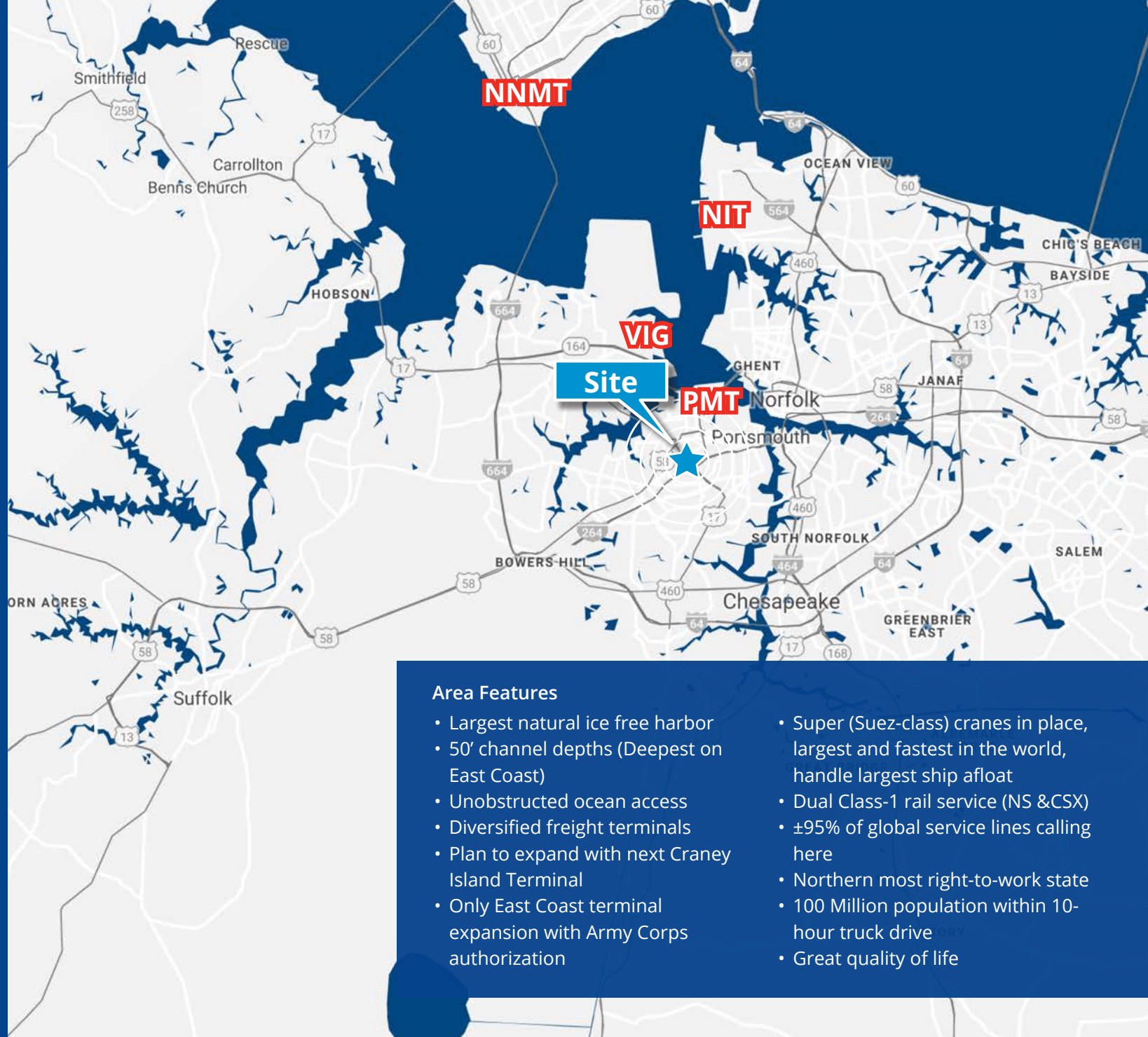




150 West Main Street
Suite 1100
Norfolk, VA 23510
P: +1 757 490 3300

Ricky Anderson
Executive Vice President
+1 757 217 1892
ricky.anderson@colliers.com

Drew Ott
Associate
+1 757 228 1826
drew.ott@colliers.com



Area Features

- Largest natural ice free harbor
- 50' channel depths (Deepest on East Coast)
- Unobstructed ocean access
- Diversified freight terminals
- Plan to expand with next Craney Island Terminal
- Only East Coast terminal expansion with Army Corps authorization
- Super (Suez-class) cranes in place, largest and fastest in the world, handle largest ship afloat
- Dual Class-1 rail service (NS & CSX)
- ±95% of global service lines calling here
- Northern most right-to-work state
- 100 Million population within 10-hour truck drive
- Great quality of life

This document has been prepared by Colliers International for advertising and general information only. Colliers International makes no guarantees, representations or warranties of any kind, expressed or implied, regarding the information including, but not limited to, warranties of content, accuracy and reliability. Any interested party should undertake their own inquiries as to the accuracy of the information. Colliers International excludes unequivocally all inferred or implied terms, conditions and warranties arising out of this document and excludes all liability for loss and damages arising there from. This publication is the copyrighted property of Colliers International and/or its licensor(s). ©2023. All rights reserved.