

3145 CLARK ROAD
SUITE #102
YPSILANTI, MICHIGAN



**SIGNATURE
ASSOCIATES**
KNOW SIGNATURE | KNOW RESULTS

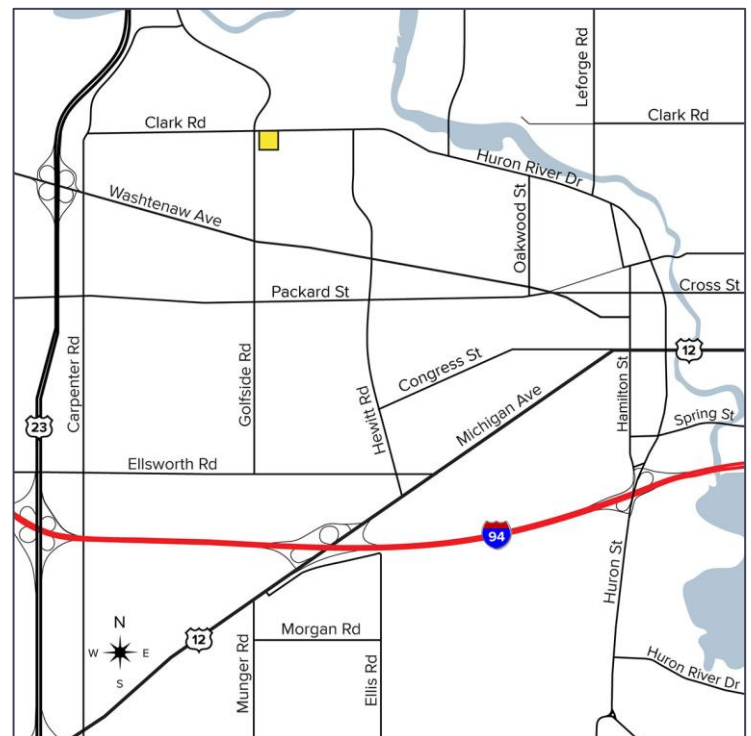
MEDICAL CONDO FOR SALE
4,000 Square Feet Available

CLARK PROFESSIONAL OFFICE PLAZA II



PROPERTY FEATURES

- 4,000 square feet available
- Great entry-level (investment) owner-user medical/office condo
- Well-positioned, offering a turnkey investment opportunity
- Immediate proximity to Trinity Health Hospital and Ann Arbor, Washtenaw Community College, and Eastern Michigan University
- Easy access to U-23, strong regional connectivity and built-in patient base
- Fully leased to Probility Physical Therapy
- Features a reception/waiting area, private office, restroom, and large open workspaces
- Local condo association
- Sale Price: \$550,000 (\$137.50/sq. ft.)



For more information, please contact:

JEFF HIGGINS
(248) 359 0650
jhiggins@signatureassociates.com

DRAKE FILIPPIS
(248) 799 3161
dfilippis@signatureassociates.com

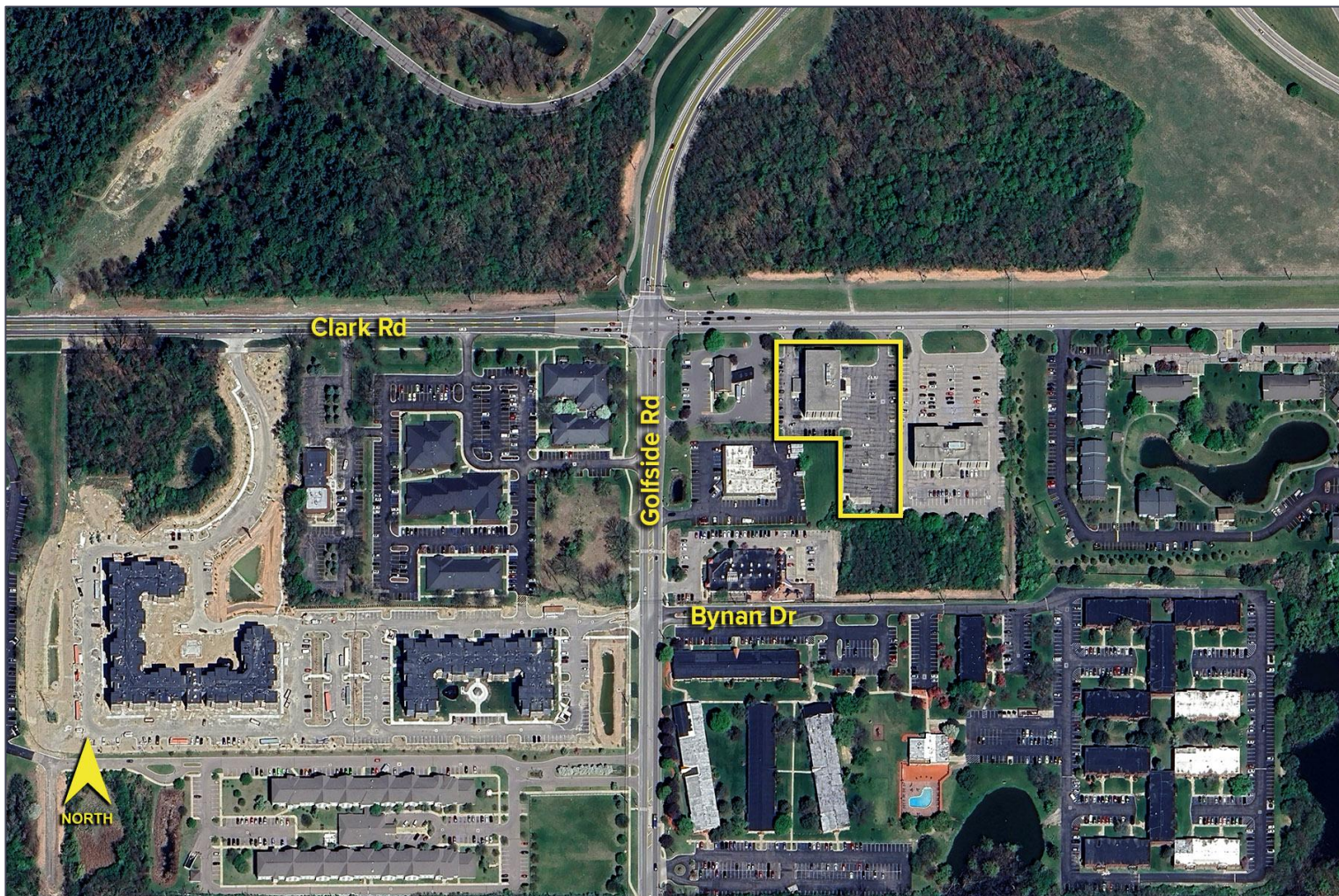
SIGNATURE ASSOCIATES
One Towne Square, Suite 1200
Southfield, MI 48076
www.signatureassociates.com

3145 Clark Road – Ypsilanti, Michigan

Medical Condo For Sale

4,000
Square Feet
AVAILABLE

Aerial



For more information, please contact:

JEFF HIGGINS
(248) 359 0650
jhiggins@signatureassociates.com

DRAKE FILIPPIS
(248) 799 3161
dfilippis@signatureassociates.com

SIGNATURE ASSOCIATES
One Towne Square, Suite 1200
Southfield, MI 48076
www.signatureassociates.com