



1633 University Ave

1633 University Ave
Berkeley, CA 94703

FOR SALE



Brian Merrion

415.802.1400

brian.merrion@expcommercial.com
www.expcommercial.com

Suphain Htaung

855.451.1236 x572

Suphain.htaung@expcommercial.com
www.expcommercial.com

Snow Bentley

415.823.8595

snow.bentley@expcommercial.com
www.expcommercial.com

Tulasi
Yarlagadda

408.644.9661

tulasi.yarlagadda@expcommercial.com
www.expcommercial.com

Property Summary

FOR SALE



PROPERTY DESCRIPTION

Prime Office Building - 1633 University Avenue, Berkeley. Just blocks from Downtown Berkeley, North Berkeley BART, and UC Berkeley. This well-maintained, two-story office building offers a rare opportunity in one of the Bay Area's most desirable locations. The free-standing property includes gated access to private on-site parking for 4+ vehicles. Inside, the building showcases red oak floors, hardwood paneling, and trim, combining classic charm with modern flexibility. Abundant natural light, a versatile layout, and quality finishes create an inviting, professional setting. Offering nearly 4,000 square feet, the space can be configured for various business needs or split into two units, ideal for an owner-user, multi-tenant investment, or live/work setup. Amenities include a kitchen with granite counters and tile, an exercise room with shower, and a spacious 2nd-floor deck with views of the Berkeley hills. Located near shops, cafes, and cultural venues, 1633 University Avenue is perfect for professional services, creative firms, or non-profits seeking a vibrant, well-connected location. An exceptional opportunity to own a unique property in one of Berkeley's premier commercial corridors.

OFFERING SUMMARY

Sale Price:	\$2,290,000
Number of Units:	1
Lot Size:	0.145 Acres
Building Size:	3,820 SF

DEMOGRAPHICS	0.3 MILES	0.5 MILES	1 MILE
Total Households	2,291	5,735	20,888
Total Population	4,979	12,746	48,363
Average HH Income	\$160,405	\$146,329	\$136,899

Brian Merrion

415.802.1400

brian.merrion@expcommercial.com

Suphain Htaung

855.451.1236 x572

Suphain.htaung@expcommercial.com

Snow Bentley

415.823.8595

snow.bentley@expcommercial.com

Tulasi Yarlagadda

408.644.9661

tulasi.yarlagadda@expcommercial.com



eXp Commercial, LLC, its direct and indirect parents and their subsidiaries (together, "We") obtained the information above from sources believed to be reliable, however, We have not verified its accuracy and make no guarantee, warranty or representation, expressed or implied, about such information. The information contained above is submitted subject to the possibility of errors, omissions, price changes, rental or other conditions, prior sale, lease or financing, or withdrawal without notice. Any projections, opinions, assumptions or estimates of the information contained above or provided in connection therewith, either expressed or implied, are for example only, and they may not represent current or future performance of the subject property. You, together with your tax and legal advisors, should conduct your own thorough investigation of the subject property and potential investment.

Property Description

FOR SALE



PROPERTY DESCRIPTION

Prime Office Building - 1633 University Avenue, Berkeley. Just blocks from Downtown Berkeley, North Berkeley BART, and UC Berkeley. This well-maintained, two-story office building offers a rare opportunity in one of the Bay Area's most desirable locations. The free-standing property includes gated access to private on-site parking for 4+ vehicles. Inside, the building showcases red oak floors, hardwood paneling, and trim, combining classic charm with modern flexibility. Abundant natural light, a versatile layout, and quality finishes create an inviting, professional setting. Offering nearly 4,000 square feet, the space can be configured for various business needs or split into two units, ideal for an owner-user, multi-tenant investment, or live/work setup. Amenities include a kitchen with granite counters and tile, an exercise room with shower, and a spacious 2nd-floor deck with views of the Berkeley hills. Located near shops, cafes, and cultural venues, 1633 University Avenue is perfect for professional services, creative firms, or non-profits seeking a vibrant, well-connected location. An exceptional opportunity to own a unique property in one of Berkeley's premier commercial corridors.

LOCATION DESCRIPTION

Located in the vibrant city of Berkeley, the area surrounding the property is a hub of innovation, culture, and academic excellence. Just a short distance away, you'll find the renowned University of California, Berkeley, along with an array of dining, shopping, and entertainment options along University Avenue. Nearby are popular attractions such as the Berkeley Art Museum and Pacific Film Archive, offering a rich cultural experience. With its convenient access to public transportation and proximity to major tech and research hubs, the location presents an enticing opportunity for office and office building investors looking to tap into Berkeley's dynamic and influential community.

Brian Merrion

415.802.1400
brian.merrion@expcommercial.com

Suphain Htaung

855.451.1236 x572
Suphain.htaung@expcommercial.com

Snow Bentley

415.823.8595
snow.bentley@expcommercial.com

Tulasi Yarlagadda

408.644.9661
tulasi.yarlagadda@expcommercial.com



eXp Commercial, LLC, its direct and indirect parents and their subsidiaries (together, "We") obtained the information above from sources believed to be reliable, however, We have not verified its accuracy and make no guarantee, warranty or representation, expressed or implied, about such information. The information contained above is submitted subject to the possibility of errors, omissions, price changes, rental or other conditions, prior sale, lease or financing, or withdrawal without notice. Any projections, opinions, assumptions or estimates of the information contained above or provided in connection therewith, either expressed or implied, are for example only, and they may not represent current or future performance of the subject property. You, together with your tax and legal advisors, should conduct your own thorough investigation of the subject property and potential investment.

Complete Highlights

FOR SALE



PROPERTY HIGHLIGHTS

- Rare Gated parking Lot (private)
- Partially Renovated in 2025
- Zoned C-U
- Close to UC Berkeley and 4th street shops.



Brian Merrion

415.802.1400

brian.merrion@expcommercial.com

Suphain Htaung

855.451.1236 x572

Suphain.htaung@expcommercial.com

Snow Bentley

415.823.8595

snow.bentley@expcommercial.com

Tulasi Yarlagadda

408.644.9661

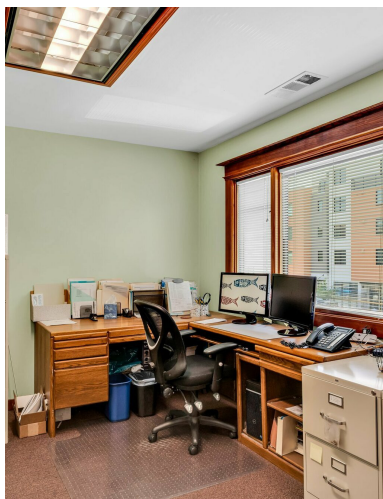
tulasi.yarlagadda@expcommercial.com



eXp Commercial, LLC, its direct and indirect parents and their subsidiaries (together, "We") obtained the information above from sources believed to be reliable, however, We have not verified its accuracy and make no guarantee, warranty or representation, expressed or implied, about such information. The information contained above is submitted subject to the possibility of errors, omissions, price changes, rental or other conditions, prior sale, lease or financing, or withdrawal without notice. Any projections, opinions, assumptions or estimates of the information contained above or provided in connection therewith, either expressed or implied, are for example only, and they may not represent current or future performance of the subject property. You, together with your tax and legal advisors, should conduct your own thorough investigation of the subject property and potential investment.

Additional Photos

FOR SALE



Brian Merrion

415.802.1400

brian.merrion@expcommercial.com

Suphain Htaung

855.451.1236 x572

Suphain.htaung@expcommercial.com

Snow Bentley

415.823.8595

snow.bentley@expcommercial.com

Tulasi Yarlagadda

408.644.9661

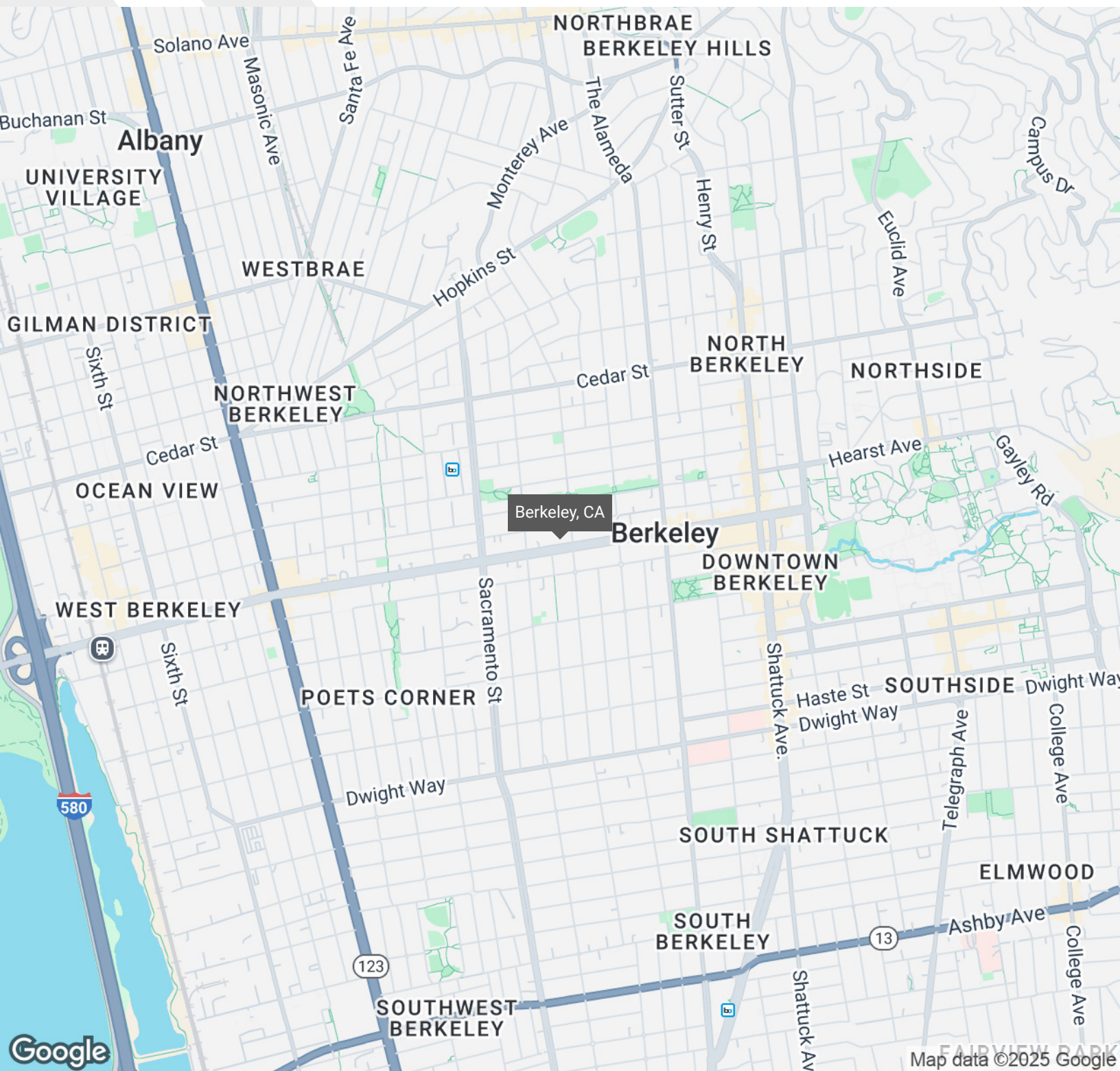
tulasi.yarlagadda@expcommercial.com



eXp Commercial, LLC, its direct and indirect parents and their subsidiaries (together, "We") obtained the information above from sources believed to be reliable, however, We have not verified its accuracy and make no guarantee, warranty or representation, expressed or implied, about such information. The information contained above is submitted subject to the possibility of errors, omissions, price changes, rental or other conditions, prior sale, lease or financing, or withdrawal without notice. Any projections, opinions, assumptions or estimates of the information contained above or provided in connection therewith, either expressed or implied, are for example only, and they may not represent current or future performance of the subject property. You, together with your tax and legal advisors, should conduct your own thorough investigation of the subject property and potential investment.

Regional Map

FOR SALE



Brian Merrion

415.802.1400

brian.merrion@expcommercial.com

Suphain Htaung

855.451.1236 x572

Suphain.htaung@expcommercial.com

Snow Bentley

415.823.8595

snow.bentley@expcommercial.com

Tulasi Yarlagadda

408.644.9661

tulasi.yarlagadda@expcommercial.com



eXp Commercial, LLC, its direct and indirect parents and their subsidiaries (together, "We") obtained the information above from sources believed to be reliable, however, We have not verified its accuracy and make no guarantee, warranty or representation, expressed or implied, about such information. The information contained above is submitted subject to the possibility of errors, omissions, price changes, rental or other conditions, prior sale, lease or financing, or withdrawal without notice. Any projections, opinions, assumptions or estimates of the information contained above or provided in connection therewith, either expressed or implied, are for example only, and they may not represent current or future performance of the subject property. You, together with your tax and legal advisors, should conduct your own thorough investigation of the subject property and potential investment.

Plans

FOR SALE



LEASE INFORMATION

Lease Type:	-	Lease Term:	Negotiable
Total Space:	-	Lease Rate:	Negotiable

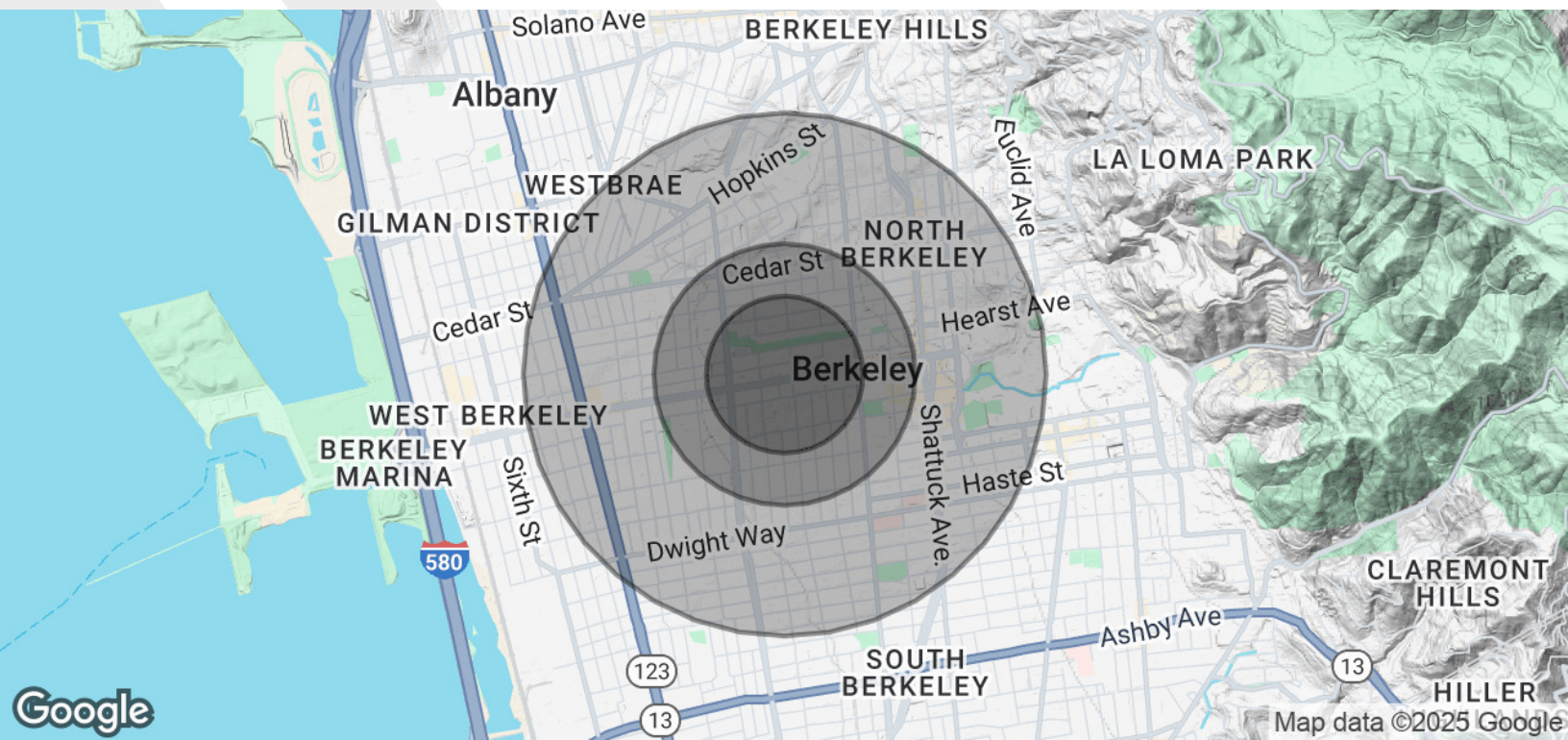
AVAILABLE SPACES

SUITE	TENANT	SIZE	TYPE	RATE	DESCRIPTION
-------	--------	------	------	------	-------------

eXp Commercial, LLC, its direct and indirect parents and their subsidiaries (together, "We") obtained the information above from sources believed to be reliable, however, We have not verified its accuracy and make no guarantee, warranty or representation, expressed or implied, about such information. The information contained above is submitted subject to the possibility of errors, omissions, price changes, rental or other conditions, prior sale, lease or financing, or withdrawal without notice. Any projections, opinions, assumptions or estimates of the information contained above or provided in connection therewith, either expressed or implied, are for example only, and they may not represent current or future performance of the subject property. You, together with your tax and legal advisors, should conduct your own thorough investigation of the subject property and potential investment.

Demographics Map & Report

FOR SALE



POPULATION	0.3 MILES	0.5 MILES	1 MILE
Total Population	4,979	12,746	48,363
Average Age	41	40	39
Average Age (Male)	40	40	38
Average Age (Female)	41	41	39

HOUSEHOLDS & INCOME	0.3 MILES	0.5 MILES	1 MILE
Total Households	2,291	5,735	20,888
# of Persons per HH	2.2	2.2	2.3
Average HH Income	\$160,405	\$146,329	\$136,899
Average House Value	\$1,354,603	\$1,354,070	\$1,328,760

Demographics data derived from AlphaMap

eXp Commercial, LLC, its direct and indirect parents and their subsidiaries (together, "We") obtained the information above from sources believed to be reliable, however, We have not verified its accuracy and make no guarantee, warranty or representation, expressed or implied, about such information. The information contained above is submitted subject to the possibility of errors, omissions, price changes, rental or other conditions, prior sale, lease or financing, or withdrawal without notice. Any projections, opinions, assumptions or estimates of the information contained above or provided in connection therewith, either expressed or implied, are for example only, and they may not represent current or future performance of the subject property. You, together with your tax and legal advisors, should conduct your own thorough investigation of the subject property and potential investment.