

FOR LEASE

1036 JUPITER RD

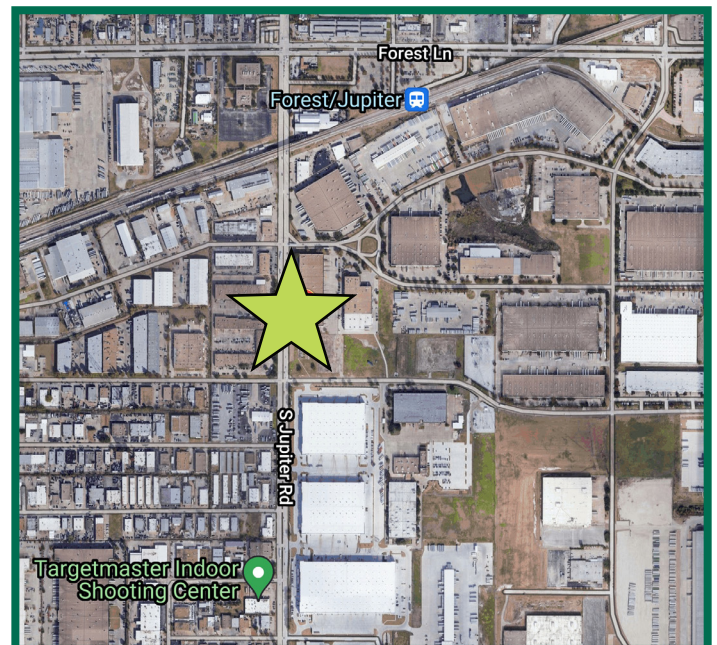
SUITE 100

Garland, TX 75042

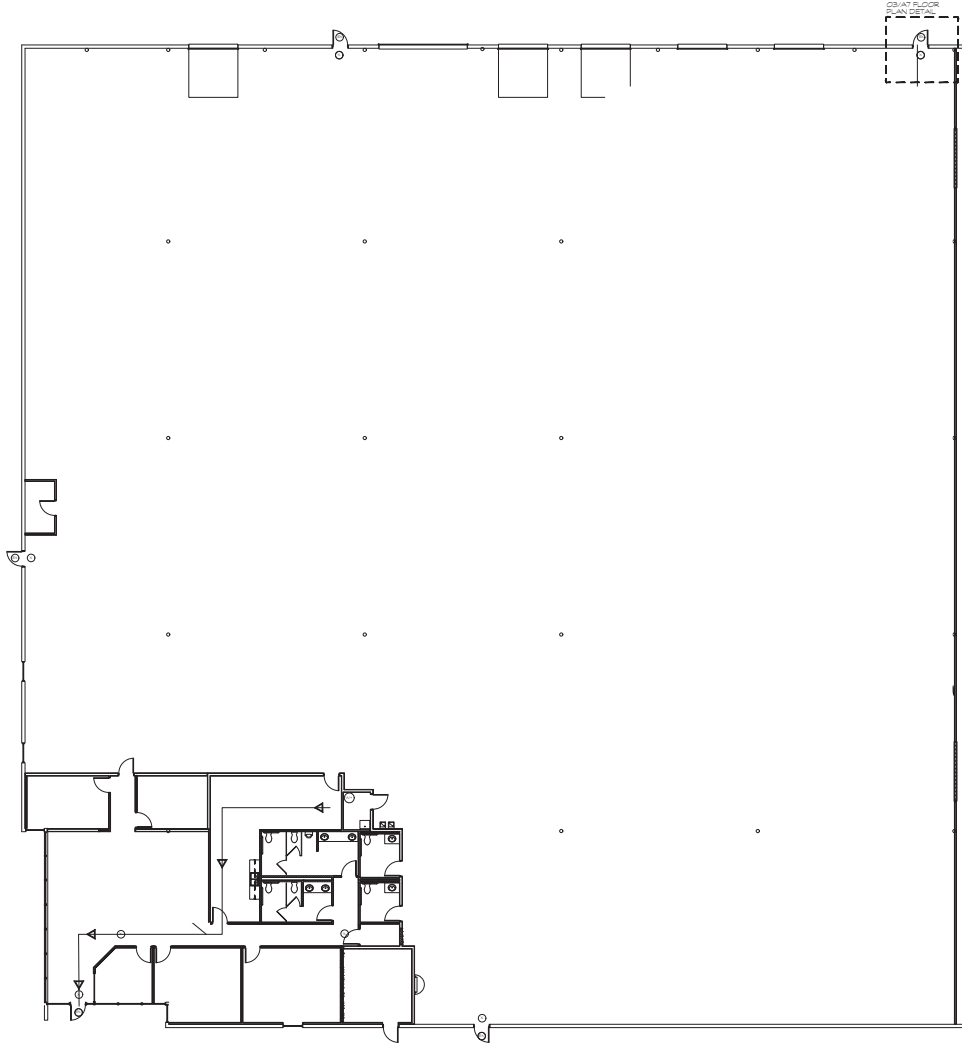


PROPERTY FEATURES

- + Building Size: 118,000 SF
- + Availability: 37,964 SF
- + +/- 2,500 SF Office
- + 28' Clear Height
- + Six (6) Dock High Doors
- + 40' x 40' Column Spacing
- + Endcap Space
- + Fenced Outside Storage
- + Visibility on Major Thoroughfare
- + ESFR Sprinklers



SITE PLAN



PLEASE CONTACT:

JOHN HENDRICKS

Senior Vice President
+1 214 979 6507
john.hendricks@cbre.com

TREVOR ATKINS

Senior Associate
+1 214 979 6338
trevor.atkins@cbre.com

© 2020 CBRE, Inc. All rights reserved. This information has been obtained from sources believed reliable, but has not been verified for accuracy or completeness. You should conduct a careful, independent investigation of the property and verify all information. Any reliance on this information is solely at your own risk. CBRE and the CBRE logo are service marks of CBRE, Inc. All other marks displayed on this document are the property of their respective owners, and the use of such logos does not imply any affiliation with or endorsement of CBRE. Photos herein are the property of their respective owners. Use of these images without the express written consent of the owner is prohibited.