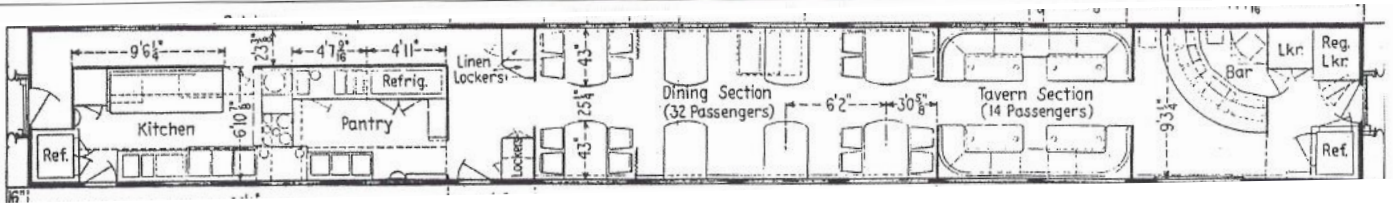


"PRIDE OF TEXAS" COCKTAIL LOUNGE/DINING CAR

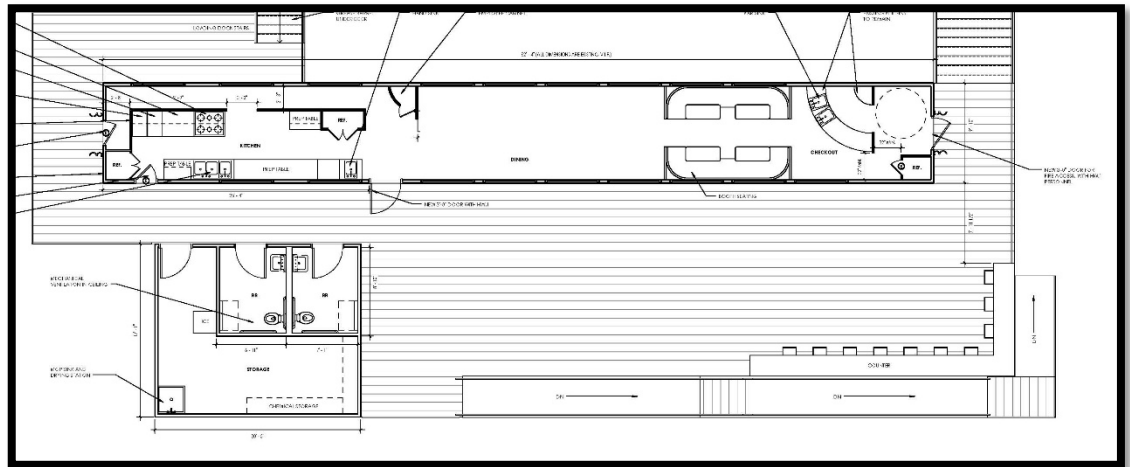
9300 Highway 290 West – Austin Texas – Building E

1950 SUNSET LIMITED PRIDE OF TEXAS COFFEE SHOP-LOUNGE



SP 10408 "Pride of Texas" is a Southern Pacific Railroad passenger car which was part of a streamlined trainset built in 1949 to serve its "Sunset Limited" train that has been running between New Orleans and Los Angeles since the 1880s. The car was retired from rail service in the middle 1970s. It is a combination dining car and cocktail lounge, seating 24 at tables in the dining area and 14 at tables in the cocktail lounge. The original stainless steel kitchen is intact. Restoration was completed in 2017 and the prior restaurant tenant equipped the kitchen with a new range hood with fire suppression system and other appliances, all remaining in place. Pictured above is the floor plan, except

note that to comply with ADA requirements and the Travis County fire code, it was necessary to shorten the 4-top tables on one side to become 2-tops. The deck now surrounding the building is shown in this drawing, together with the restrooms and the dry storage room, both of which are in an outbuilding connected to the railcar by a covered roof.



As shown to the right, the car has a loading dock with a separate dedicated driveway on the Highway 290 end for the delivery of groceries and supplies. The traffic count on Highway 290 at this location is about 40,000 cars a day. The center is entered from a driveway to the immediate west of the railroad car, but can also be entered from a rear street, having road intersection access with the highway at both ends of the block. The subdivision does not have natural gas service, instead the restaurant range and grill is served by a propane tank located at the foot of the prior restaurant tenant's sign seen in the photo. Water is supplied by the West Travis County Public Utility Agency and Electricity by the Pedernales Electric Co-Op. Because this property is located outside the city limits there is no zoning. The Travis County Health Department has approved the facility for restaurant use and the prior tenant had a beer/wine license. The car is equipped with three floor to ceiling refrigerator/coolers, and its kitchen is stainless steel throughout, including a stainless steel floor with hose-out cleaning ability. The kitchen is presently equipped with a dishwasher, a gas range and a rotisserie oven, which could be swapped out. There is room for additional kitchen appliances, refrigeration, and an ice machine in the dry storage room, conforming with usage by the prior tenant. For Travis County Health Department compliance the mop sink is in the dry storage room. There is a three compartment sink with a separate sink for hand washing to comply with the County health code.





The interior of the car has been restored to its original color scheme, which was a blend of yellows and browns with a western motif including spur and longhorn head decorative elements along with cattle brands from famous Texas ranches. The brown formica table tops and/or chairs could be changed to a brighter color if desired.

The car floor is marmoleum, a type of linoleum which is easily cleaned. In the cocktail bar area shown to the right, there are USB ports behind the seating.

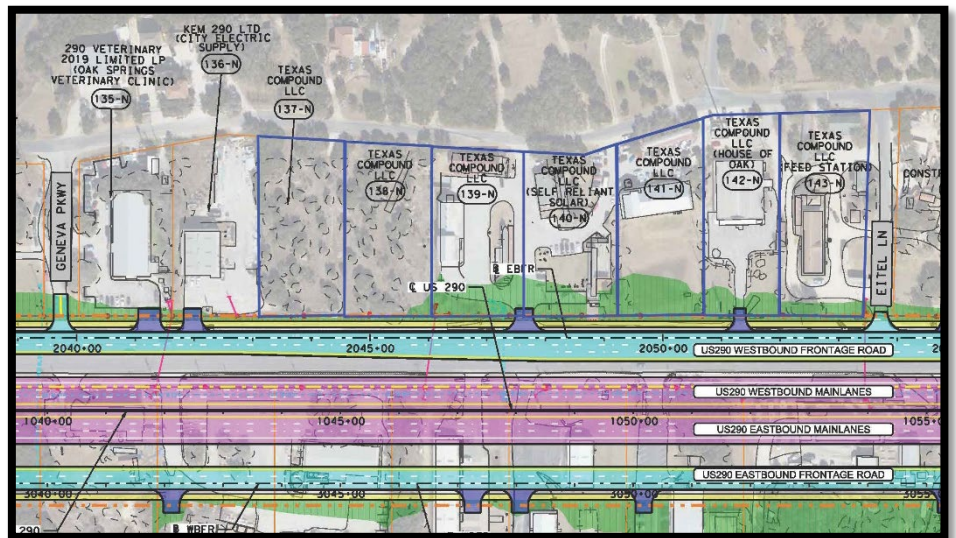


The deck on the east side of the car offers a flexible variety of space configurations. The prior tenant erected a poly tarp roof over the deck and used the space for additional seating and for live music performances. In the wall behind the guitar player pictured here there is hidden by the



siding a fully framed-out bar window opening to the dry storage room, in case a future tenant wants the ability to offer bar service directly to outdoor patrons. The tarps could be replaced by a solid patio-type roof.

In January 2024 TxDOT released its final plan for expansion of Highway 290 West, which fronts the center. Their drawing to the right illustrates that the area presently occupied by the highway will become a frontage road, with all planned expansion on the opposite side of it. The Pride of Texas is located on Lot 140-N in this image. The start date of road construction is not known; they seek completion of the environmental impact statement by 2025.



Below is a line drawing of the car in 1949, with kitchen area to left. The near-center door is now larger for ADA compliance.

