

# INDUSTRIAL/WAREHOUSE BUILDINGS

13,633 SF

SALE PRICE: \$650,000



6201 S Shields Blvd., Oklahoma City, Oklahoma 73149



7501 Broadway Extension  
Oklahoma City, OK 73116

Presented By:

**George W. Huffman**  
CEO | Managing Broker  
M: 405.409.4400  
O: 405.752.2525  
george@iwpok.com

Assisted By:

**Heather Wolf**  
Broker Assistant  
M: 405.837.0528  
O: 405.752.2525  
heather@iwpok.com

**PROPERTY OVERVIEW**

Two standalone industrial metal buildings totaling 13,633 sf with a 110' fronting on South Shields Boulevard, large asphalt front lot for amply display or parking, with back lot fully fenced and graveled, all situated on 1.43 acres. The larger of the two buildings is 11,708 sf and 1,925 sf in the smaller, see attached floorplan for dimensions. Both buildings are served by both natural gas and heavy electrical service believed to be at minimum 600 amps of three phase electrical supply. Numerous oversized overhead doors with high ceilings and skylights. Ideal for heavy equipment repair, car lot, wrecker/impound yard, mobile home sales and storage, fencing company, heavy towing service, just to name a few.

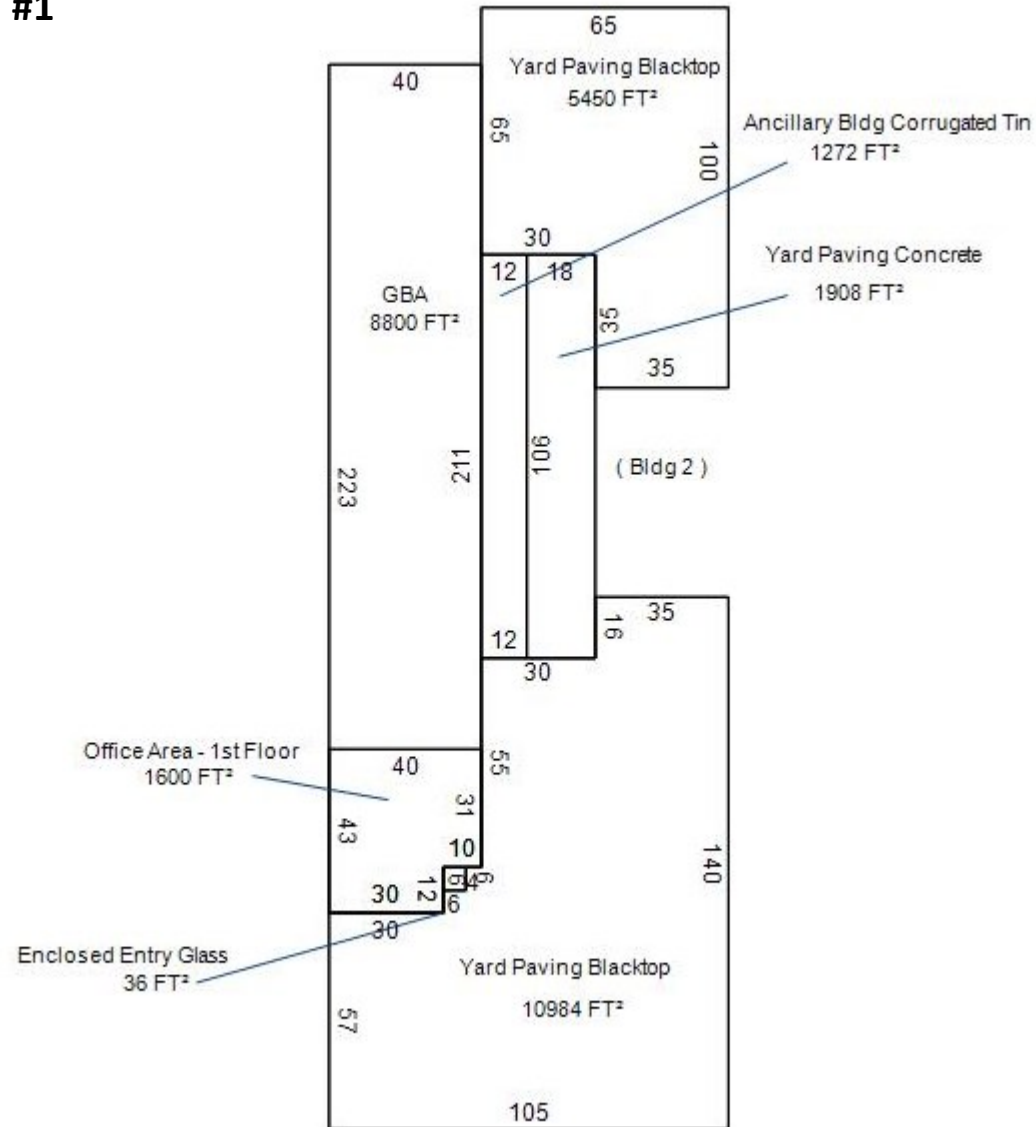
Call: George Huffman @ 405-409-4400 | george@iwpok.com  
Assisted by: Heather Wolf @ 405-837-0528 | heather@iwpok.com

**SALE PRICE: \$650,000**

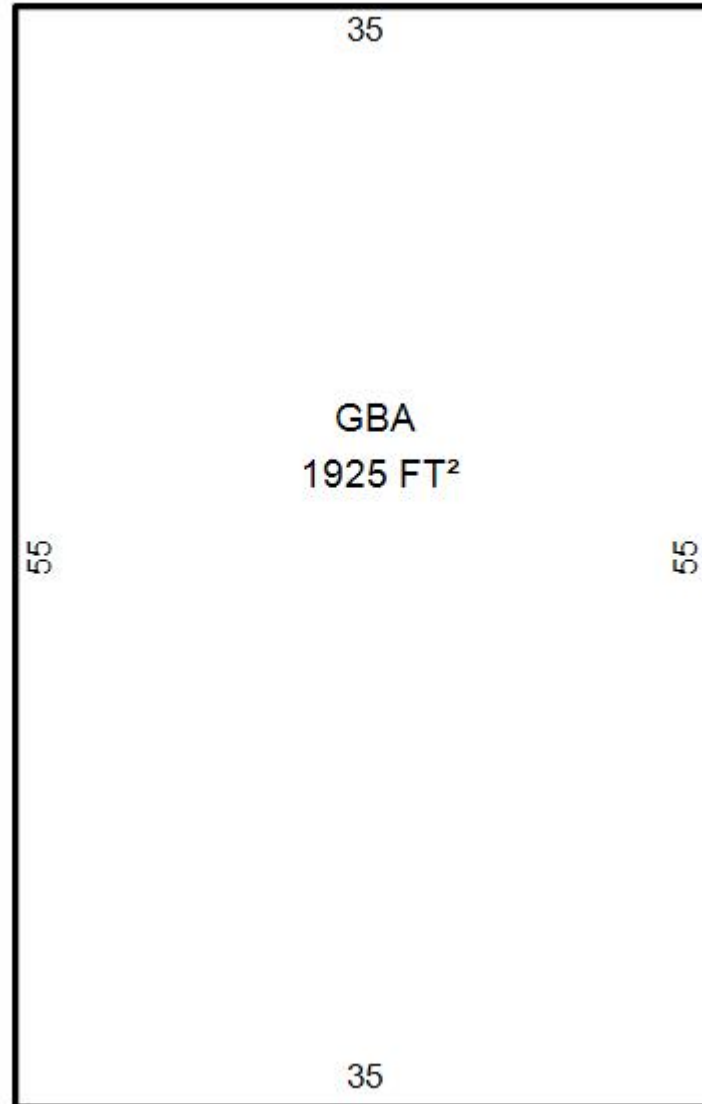
<b>BUILDING #1 SF</b>	<b>11,708</b>
<b>BUILDING #2 SF</b>	<b>1,925</b>
<b>LAND AREA</b>	<b>62,151 SF (1.43 Acre)</b>
<b>ZONING</b>	<b>I-2 Light Industrial District</b>
<b>Commission</b>	<b>2.5% to Selling Broker</b>

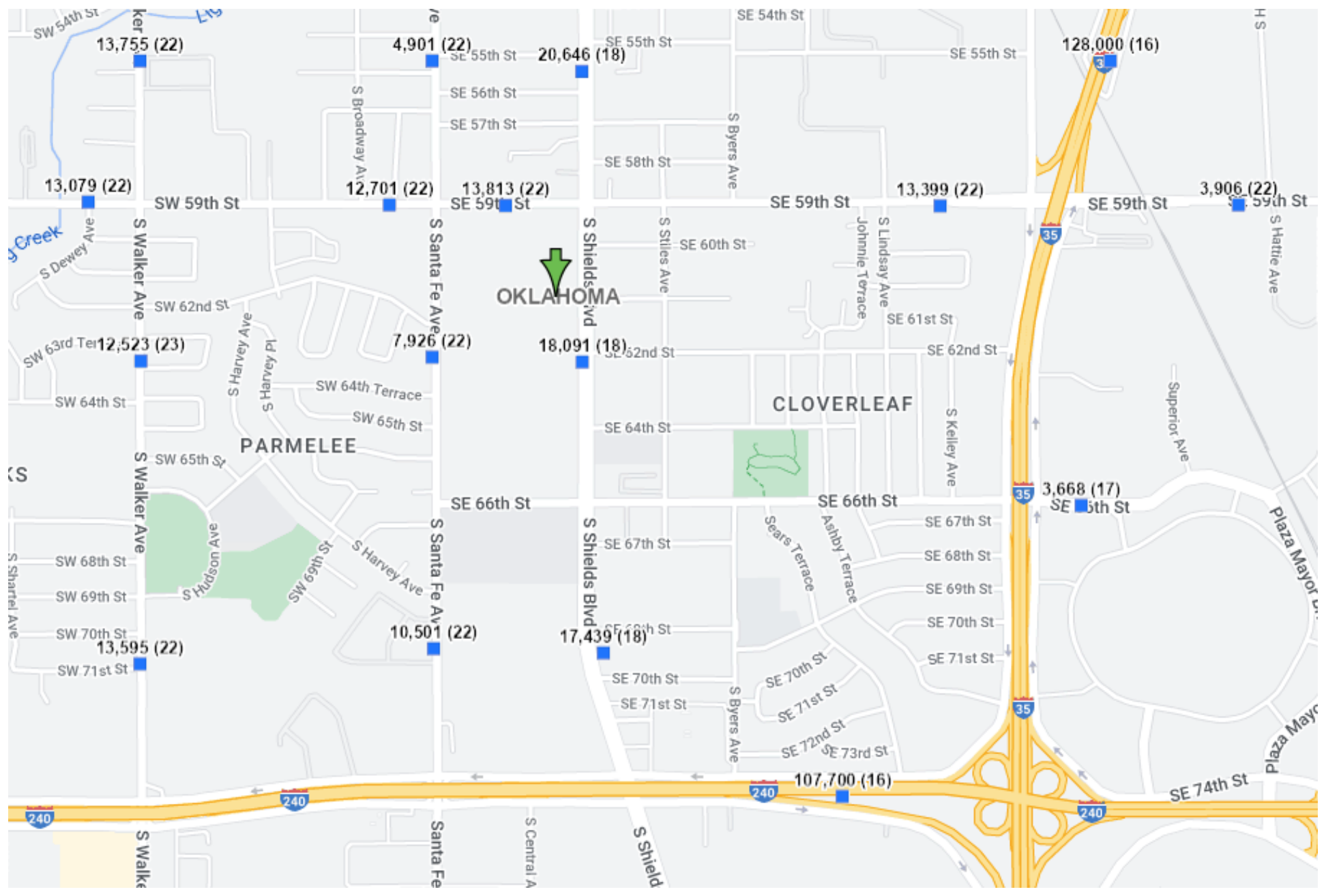
**FOR SALE**

**FLOORPLAN BUILDING #1**



**FLOORPLAN BUILDING #2**





### Highlights:

- 110 ft frontage on S Shields Boulevard
- 1.43 Acres
- 2 stand-alone buildings
- Excellent location with access to I-240 and I-35
- Ample oversized overhead doors
- Zoned I-2 Light Industrial

Call: George Huffman @ 405-409-4400 | [george@iwpok.com](mailto:george@iwpok.com)

Assisted by: Heather Wolf @ 405-837-0528 | [heather@iwpok.com](mailto:heather@iwpok.com)

## 6201 S Shields Blvd., Oklahoma City, Oklahoma 73149



7501 Broadway Extension  
Oklahoma City, OK 73116

Presented By:

**George W. Huffman**  
CEO | Managing Broker  
M: 405.409.4400  
O: 405.752.2525  
[george@iwpok.com](mailto:george@iwpok.com)

Assisted By:

**Heather Wolf**  
Broker Assistant  
M: 405.837.0528  
O: 405.752.2525  
[heather@iwpok.com](mailto:heather@iwpok.com)