

**FOR SUBLEASE**

**10,000 SF**

WAREHOUSE SPACE ONLY  
NO OFFICE / NO YARD



**\$11,500**  
PER MONTH  
GROSS



**18'-20'**  
WAREHOUSE  
CLEARANCE



**5 FWY**  
IMMEDIATE  
ACCESS



**SUBLEASE**  
THRU  
JAN 31 2027

1335 S.  
**CLAUDINA STREET**  
ANAHEIM, CA

[spectrumcre.com](http://spectrumcre.com) | 818.252.9900

**SPECTRUM**  
COMMERCIAL REAL ESTATE, INC.



**ARTHUR MINASSIAN**

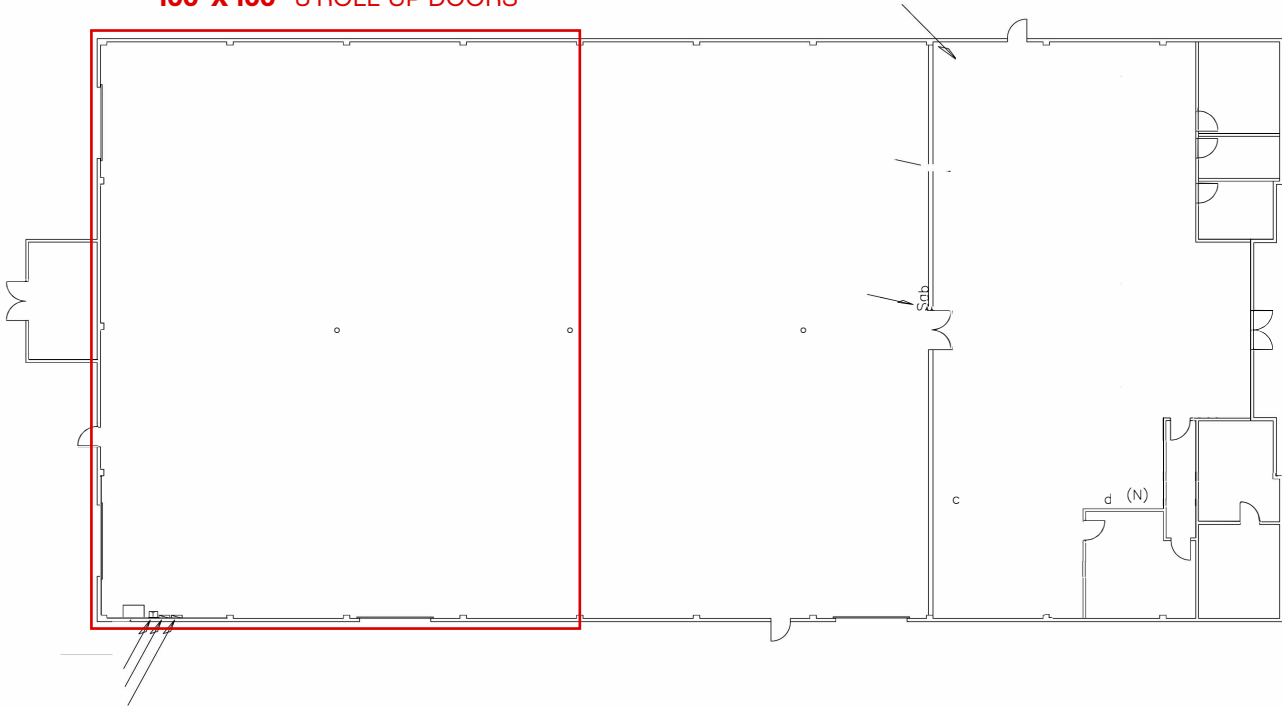
Senior Vice President  
818.634.3722  
[art@availablewarehouses.com](mailto:art@availablewarehouses.com)  
CA DRE Lic. #02026662



No warranty, express or implied, is made as to the accuracy of the information contained herein. This information is submitted subject to errors, omission, change of price, rental or other conditions, withdrawal without notice, and is subject to any special listing conditions imposed by our principals. Cooperating brokers, buyers, tenants and other parties who receive this document should not rely on it, but should use it as a starting point of analysis, and should independently confirm the accuracy of the information contained herein through a due diligence review of the books, recods, files and documents that constitute reliable sources of the information described herein. Spectrum Commercial Real Estate, Inc. CA DRE #02042805

1335 S.  
**CLAUDINA STREET**  
ANAHEIM, CA

**100' X 100'** 3 ROLL-UP DOORS



[spectrumcre.com](http://spectrumcre.com) | 818.252.9900

**SPECTRUM**  
COMMERCIAL REAL ESTATE, INC.



**ARTHUR MINASSIAN**

Senior Vice President  
818.634.3722

[art@availablewarehouses.com](mailto:art@availablewarehouses.com)  
CA DRE Lic. #02026662



No warranty, express or implied, is made as to the accuracy of the information contained herein. This information is submitted subject to errors, omission, change of price, rental or other conditions, withdrawal without notice, and is subject to any special listing conditions imposed by our principals. Cooperating brokers, buyers, tenants and other parties who receive this document should not rely on it, but should use it as a starting point of analysis, and should independently confirm the accuracy of the information contained herein through a due diligence review of the books, recods, files and documents that constitute reliable sources of the information described herein. Spectrum Commercial Real Estate, Inc. CA DRE #02042805