

FOR SALE

±1,584 SQ. FT. RETAIL/RESTAURANT/OFFICE
SPACE

PROPERTY INFORMATION

Property: Courtyard at Avila
445 1st Street
Avila Beach, CA 93424

PRICE: \$735,000

SIZE: ±1,584 sq. ft.

PRICE/SF: \$483/SF

TYPE: Retail./Restaurant/OFFICE

Zoning: CR (Commercial Retail)

Parking: Street Parking

APN: 076-197-022

Highlights: One block from the beach. This Retail/Restaurant suite benefits from high pedestrian traffic and from tourists' visiting the beach and shops on Avila Beach Pier. Property features an open floor plan, large display area, private office/storage area, and private restroom.



CONTACT:

ROD TRUJILLO

OWNER/BROKER

DRE #01388764

CELL: 805.703.0999

ROD@TRUJILLO-GROUP.COM

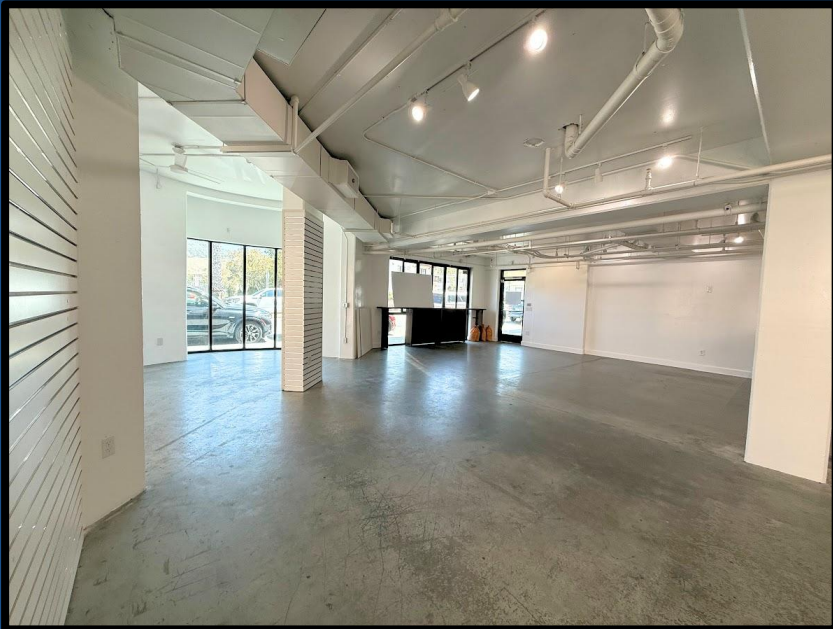
The information contained herein has been obtained from the owner of the property or from other sources deemed reliable. While we have no reason to doubt its accuracy, we do not guarantee it.



1402 Marsh St. | San Luis Obispo, CA 93401
www.Trujillo-Group.com

INTERIOR

FOR SALE
±1,584 SQ. FT. RETAIL/RESTAURANT SPACE



TRUJILLO 
Commercial Real Estate
GROUP

1402 Marsh St. | San Luis Obispo, CA 93401
www.Trujillo-Group.com

Potential Build-Out Designs

FOR SALE

±1,584 SQ. FT. RETAIL/RESTAURANT SPACE



TRUJILLO 
Commercial Real Estate
GROUP

1402 Marsh St. | San Luis Obispo, CA 93401
www.Trujillo-Group.com

The information contained herein has been obtained from the owner of the property or from other sources deemed reliable. While we have no reason to doubt its accuracy, we do not guarantee it.

EXTERIOR

FOR SALE
±1,584 SQ. FT. RETAIL/RESTAURANT SPACE

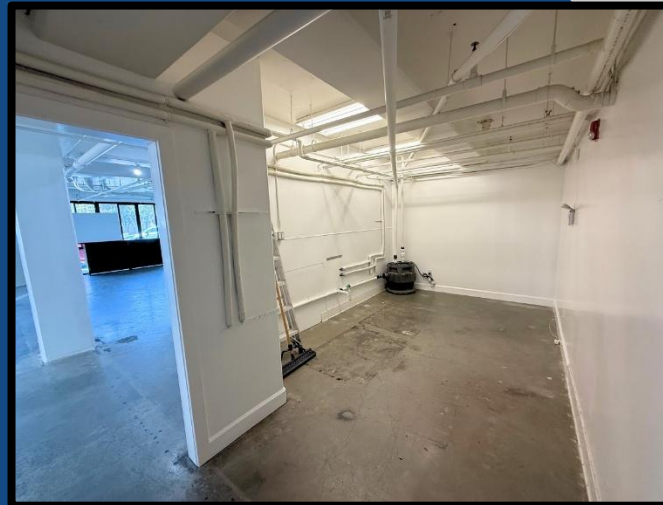
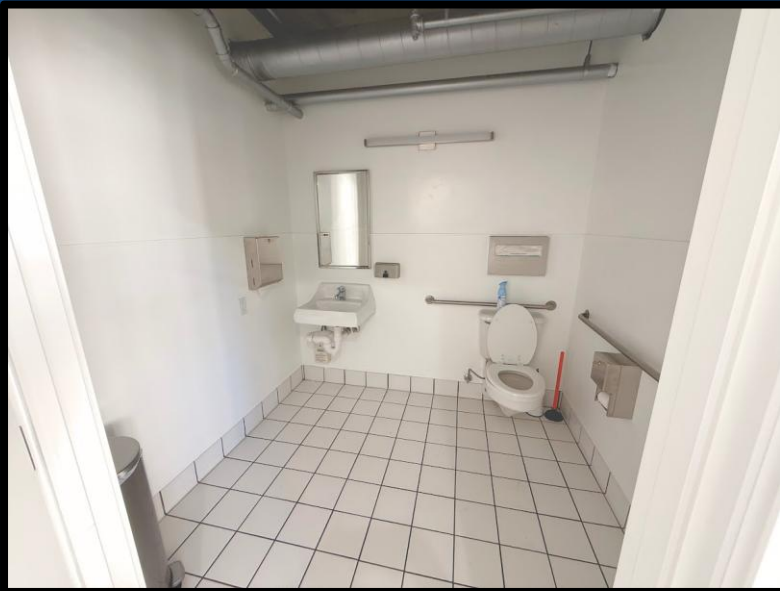
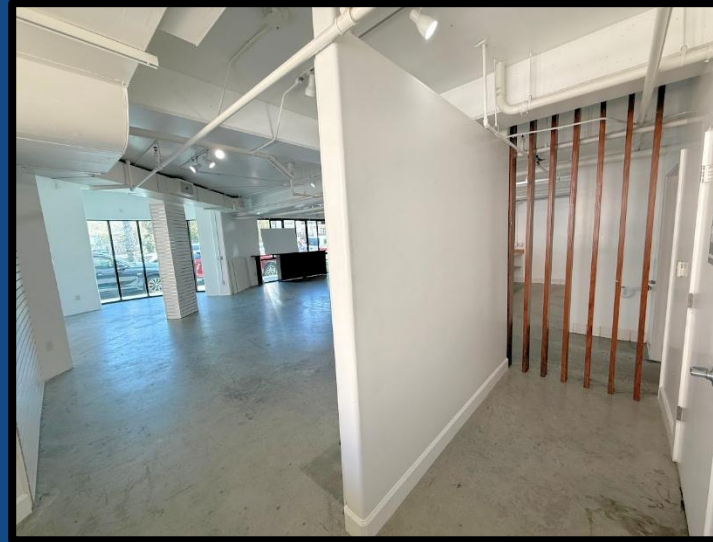


TRUJILLO 
Commercial Real Estate
GROUP

1402 Marsh St. | San Luis Obispo, CA 93401
www.Trujillo-Group.com

PRIVATE RESTROOM & BACKROOM

FOR SALE
±1,584 SQ. FT. RETAIL/RESTAURANT SPACE

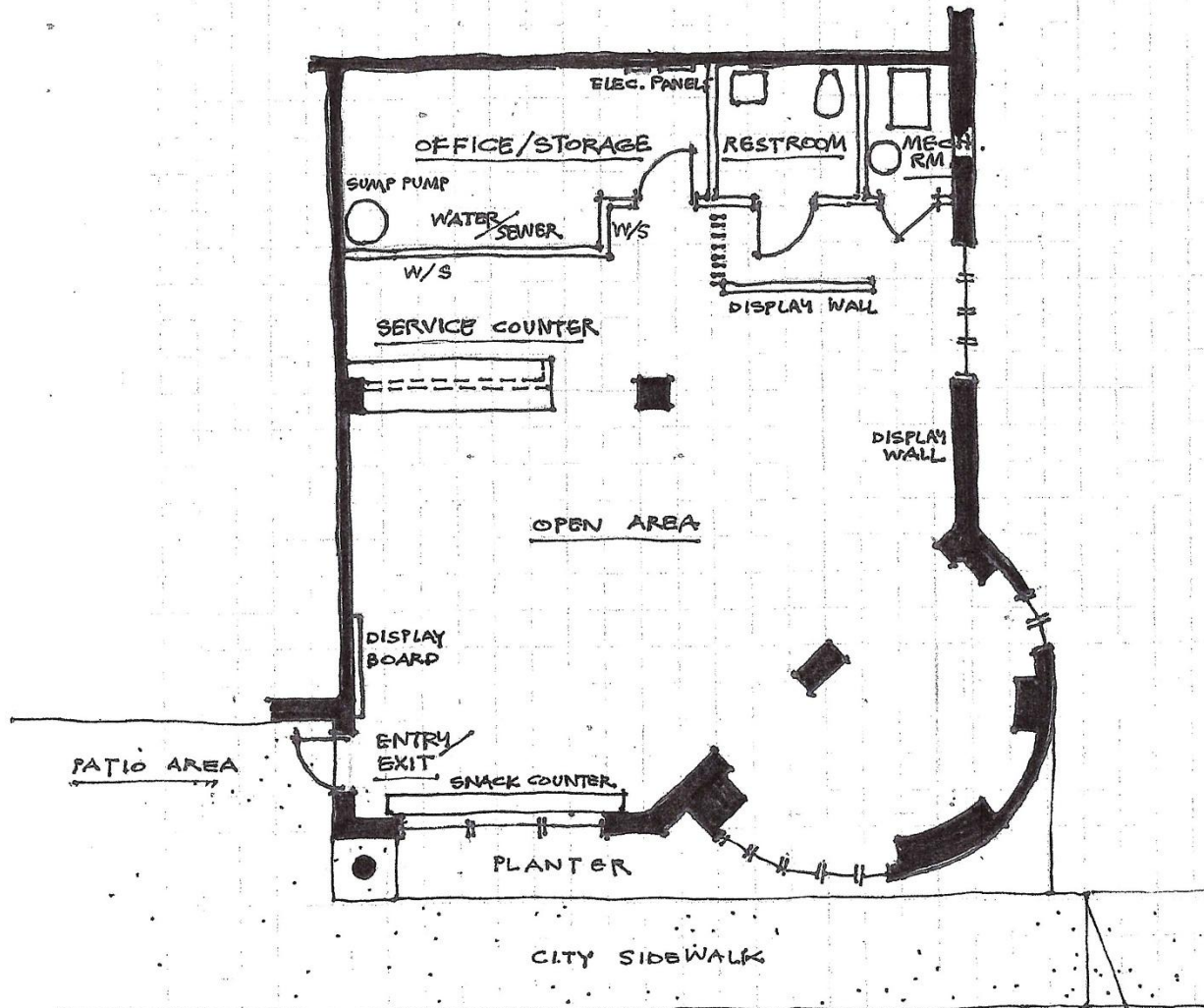


TRUJILLO 
Commercial Real Estate
GROUP

1402 Marsh St. | San Luis Obispo, CA 93401
www.Trujillo-Group.com

FLOOR PLAN

FOR SALE
±1,584 SQ. FT. RETAIL/RESTAURANT SPACE



FLOOR PLAN - CURRENT 1584 S.F.
1/8" = 1'-0" 445 1/2 ST. STREET, AVILA BEACH



1402 Marsh St. | San Luis Obispo, CA 93401
www.Trujillo-Group.com

The information contained herein has been obtained from the owner of the property or from other sources deemed reliable. While we have no reason to doubt its accuracy, we do not guarantee it.