

1441 W. ELIZABETH STREET
DETROIT, MICHIGAN

RETAIL FOR LEASE
4,400 Square Feet Available



**SIGNATURE
ASSOCIATES**
KNOW SIGNATURE | KNOW RESULTS

HEART OF CORKTOWN



PROPERTY FEATURES

- 4,400 square feet available
- Rare restaurant opportunity in the center of Corktown
- Surrounded by Corktown's thriving mix of retail, local businesses and established restaurants
- Rooftop patio and recently remodeled
- Contact Broker for leasing information



For more information, please contact:

JOE STACK
(248) 359 0615
jstack@signatureassociates.com

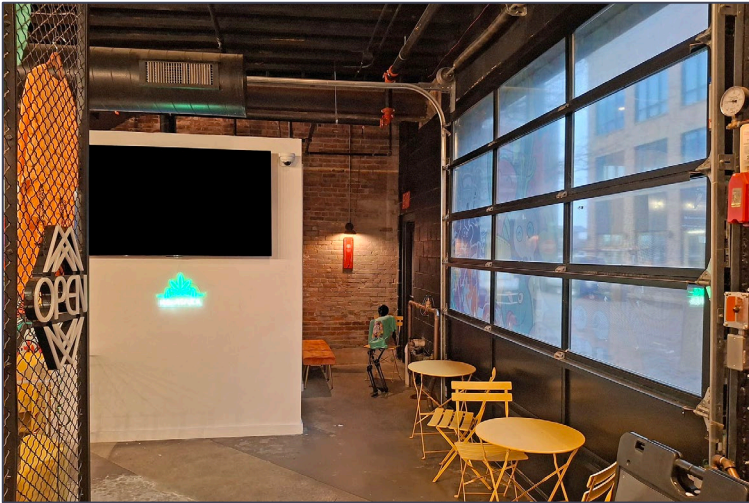
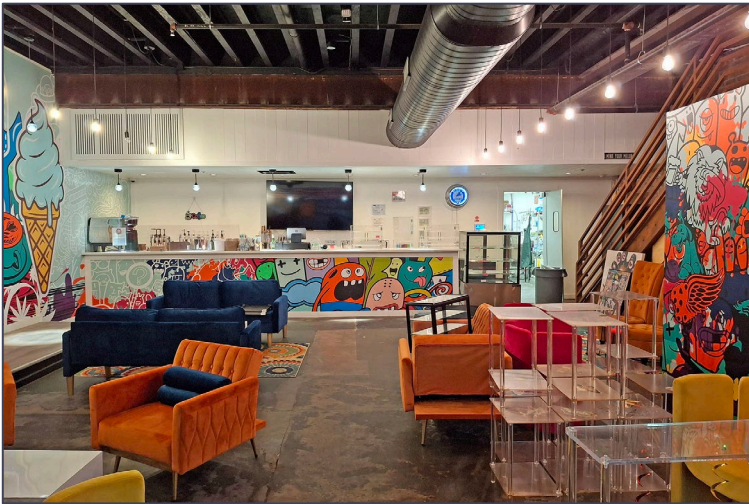
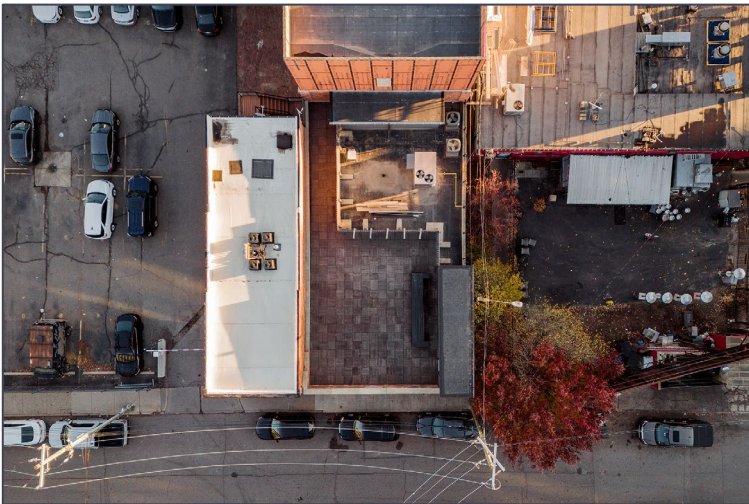
CHRIS MONSOUR
(248) 948 0107
cmonsour@signatureassociates.com

SIGNATURE ASSOCIATES
One Towne Square, Suite 1200
Southfield, MI 48076
www.signatureassociates.com

1441 W. Elizabeth Street – Detroit, Michigan

Retail For Lease

4,400
Square Feet
AVAILABLE



For more information, please contact:
JOE STACK
(248) 359 0615
jstack@signatureassociates.com

CHRIS MONSOUR
(248) 948 0107
cmonsour@signatureassociates.com

SIGNATURE ASSOCIATES
One Towne Square, Suite 1200
Southfield, MI 48076
www.signatureassociates.com

Information is subject to verification and no liability for errors or omissions is assumed. Price is subject to change and listing withdrawal.

1441 W. Elizabeth Street – Detroit, Michigan

Retail For Lease

4,400
Square Feet
AVAILABLE



For more information, please contact:

JOE STACK
(248) 359 0615
jstack@signatureassociates.com

CHRIS MONSOUR
(248) 948 0107
cmonsour@signatureassociates.com

SIGNATURE ASSOCIATES
One Towne Square, Suite 1200
Southfield, MI 48076
www.signatureassociates.com

1441 W. Elizabeth Street – Detroit, Michigan

Retail For Lease

4,400
Square Feet
AVAILABLE

Site Plan



For more information, please contact:

JOE STACK
(248) 359 0615
jstack@signatureassociates.com

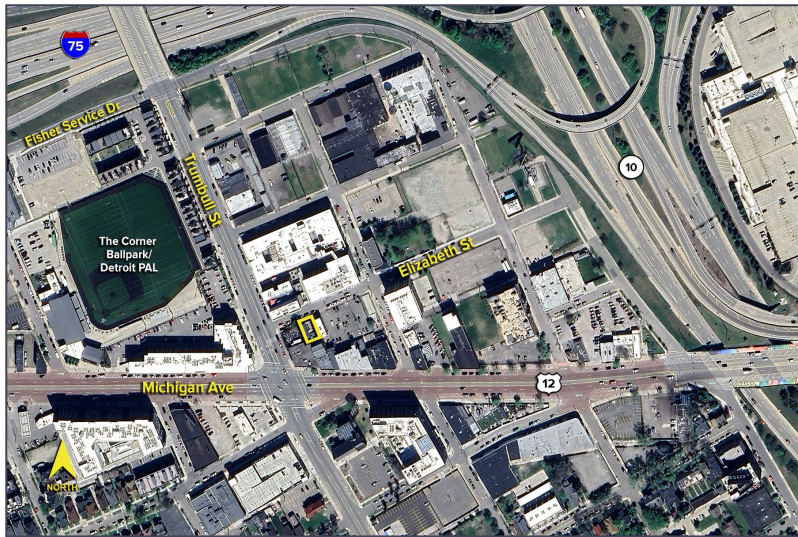
CHRIS MONSOUR
(248) 948 0107
cmonsour@signatureassociates.com

SIGNATURE ASSOCIATES
One Towne Square, Suite 1200
Southfield, MI 48076
www.signatureassociates.com

1441 W. Elizabeth Street – Detroit, Michigan

Retail For Lease

4,400
Square Feet
AVAILABLE



DEMOGRAPHICS

| | POPULATION | MED. HH INCOME |
|--------|------------|----------------|
| 1 MILE | 15,475 | \$55,460 |
| 3 MILE | 90,976 | \$48,438 |
| 5 MILE | 238,453 | \$44,812 |

TRAFFIC COUNTS (TWO-WAY)

| | |
|--------|---------------------------------|
| 11,235 | Michigan Ave. E of Trumbull St. |
| 12,352 | Michigan Ave. W of Trumbull St. |
| 8,524 | Trumbull St. N of Michigan Ave. |
| 4,890 | Trumbull St. S of Michigan Ave. |



For more information, please contact:

JOE STACK
(248) 359 0615
jstack@signatureassociates.com

CHRIS MONSOUR
(248) 948 0107
cmonsour@signatureassociates.com

SIGNATURE ASSOCIATES
One Towne Square, Suite 1200
Southfield, MI 48076
www.signatureassociates.com