

388,183 SF

Industrial Space For Lease



Prologis Stockton 10



4601 Newcastle Road
Stockton, CA 95215 USA

LOCATION

- Close proximity to BNSF and UPRR Intermodal terminals
- Direct access to Highway 99 and Interstate 5

FACILITY

- ±23,534 SF offices
- 94 dock high doors
- 4 grade level doors
- 36' clear height
- 130' primary and 185' secondary concrete truck court
- 50' x 54' column spacing
- LED lighting
- ESFR fire suppression
- Existing solar system
- Secured truck court with full guard house
- Fully insulated and conditioned

ADVANTAGES AND AMENITIES

- Access to the Prologis Essentials platform, which includes:

[Operations Essentials](#)

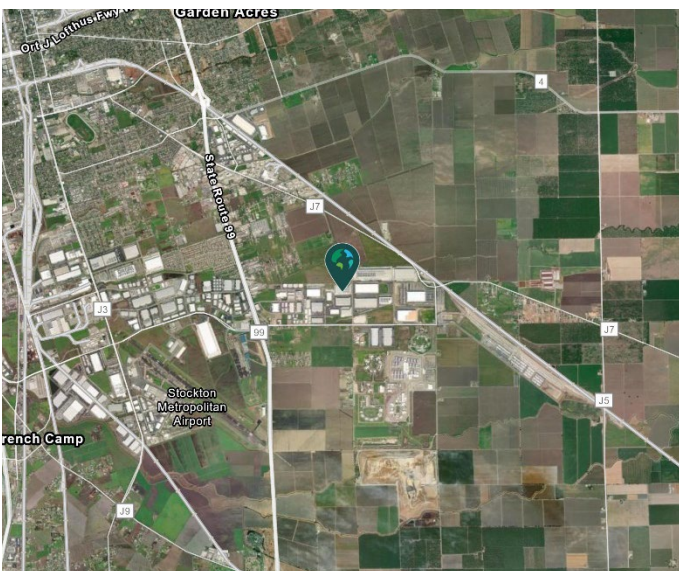
[Energy Essentials](#)

[Workforce Essentials](#)

[Mobility Essentials](#)

[Digital Essentials](#)

Your single-source service for efficient move-in and operations: [prologisessentials.com](https://www.prologisessentials.com)

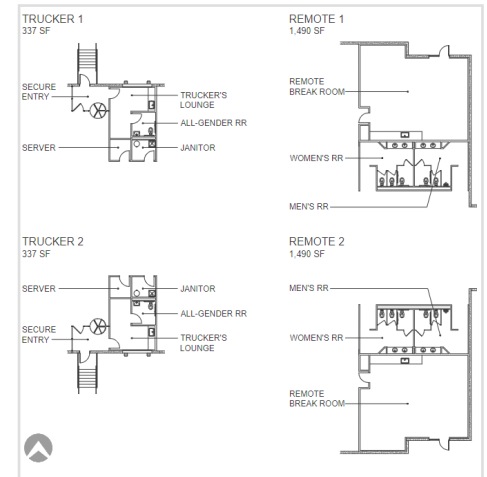
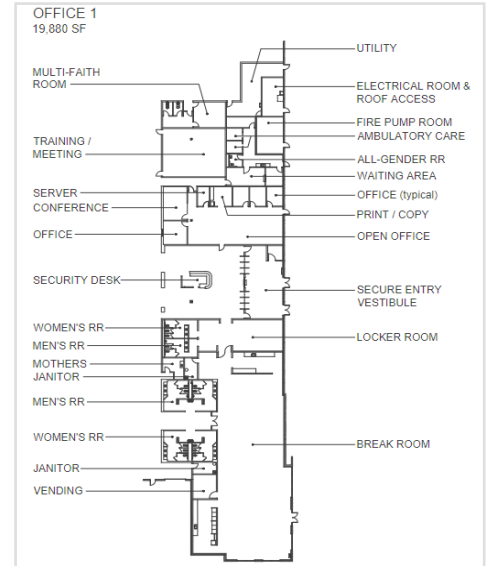
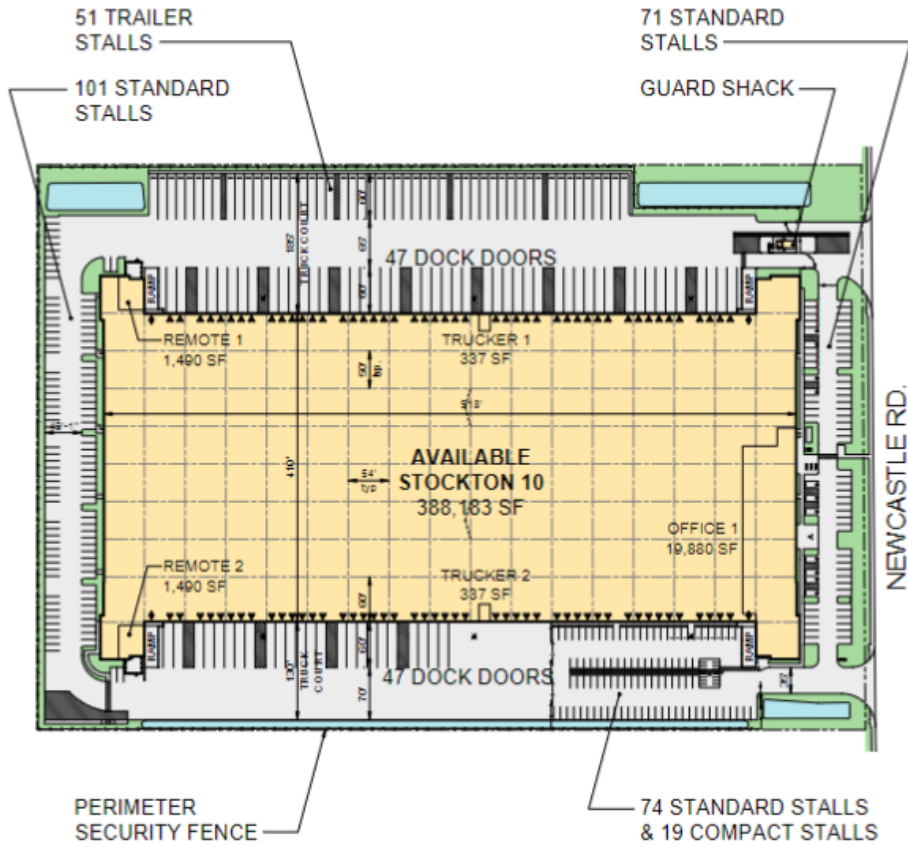


388,183 SF

Industrial Space For Lease



Prologis Stockton 10



Cushman & Wakefield
Tyson Vallenari, SIOR
tyson.vallenari@cushwake.com
ph +1 510 919 2328
3255 W March Lane, Ste. 230
Stockton, CA 95219 USA
Lic #01480887

Cushman & Wakefield
Kevin Dal Porto
kevin.dalporto@cushwake.com
ph +1 209 601 2476
3255 W March Lane, Ste. 230
Stockton, CA 95219 USA
Lic #01212936

Cushman & Wakefield
Blake Rasmussen
Blake.rasmussen@cushwake.com
ph +1 209 481 7044
3255 W March Lane, Ste. 230
Stockton, CA 95219 USA
Lic #01010250

Prologis
Matt Drury
mdrury@prologis.com
ph +1 415 418 4485
615 International Parkway
Tracy, CA 95377 USA
Lic #01901364

Prologis
Claire Wilson
cwilson2@prologis.com
ph +1 925 813 8623
615 International Parkway
Tracy, CA 95377 USA
Lic #01982067