



Colliers



YOUR SIGN HERE

3702 SOUTH

RAYUS

ENTER HERE

Office For Lease

Available:

1,596 SF

Lease Rate:

\$15.00 PSF  
NNN

## Wasatch Renal Center

3702 S. State Street  
South Salt Lake, Utah 84115

### Property Highlights

- 2-story medical office
- Great visibility, ingress/egress from State Street & Main Street
- Ample parking for patients and guests
- Covered drop off area
- Building signage available
- EV charging stations
- Parking Ratio: 5/1,000
- Monument signage available at two entrances
- Near abundant retail, restaurants and hotels
- Close proximity to St. Mark's Hospital (2 mi.), IHC Medical Center (2.5 mi.) and Salt Lake Behavioral Health (1.3 mi.)
- Great synergy with tenants such as Fresenius Kidney Care, Nephrology Associates of Utah, Wasatch Liberty Dialysis, Wasatch Vascular Center, RAYUS Radiology

### Contact:

#### Rusty Lugo

Vice President  
+1 801 947 8377  
rusty.lugo@colliers.com

#### Andrew Whitworth

Associate  
+1 580 3895  
andrew.whitworth@colliers.com

### Colliers

111 S. Main St., Suite 2200  
Salt Lake City, UT 84111  
Main: +1 801 947 8300  
colliers.com

Wasatch Renal Center | For Lease

Available:

1,596 SF

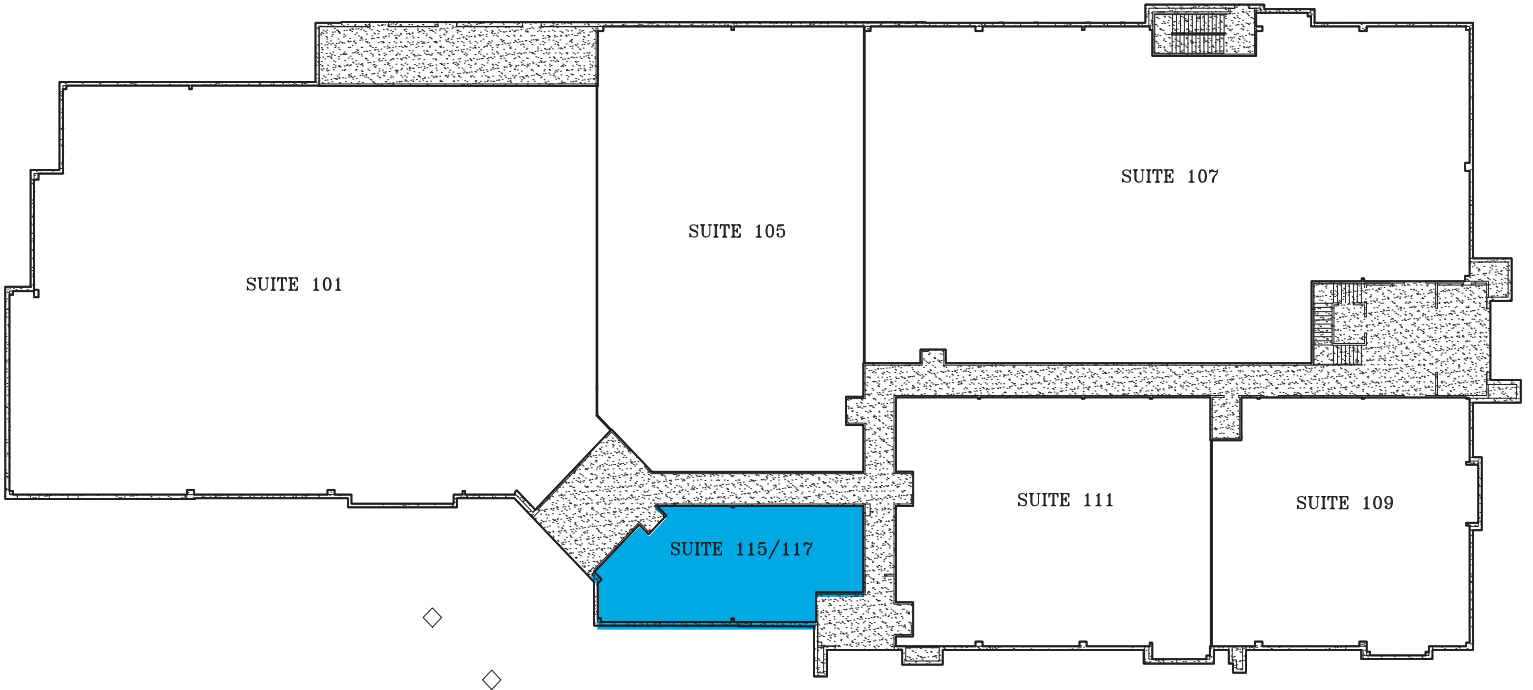
Lease Rate:

\$15.00 PSF NNN

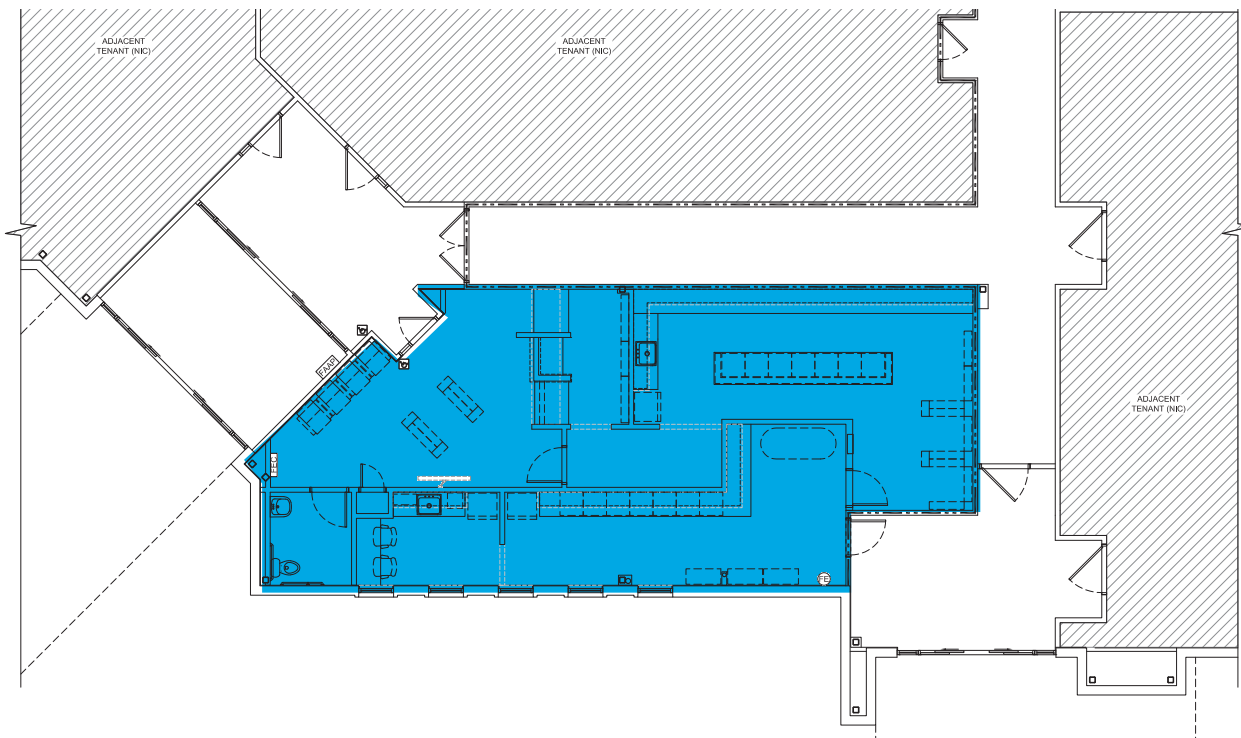


# Floor Plans

## First Floor



## Close up of available suite





**Colliers**  
 111 S. Main St., Suite 2200  
 Salt Lake City, UT 84111  
 Main: +1 801 947 8300  
 colliers.com

**Contact:**

**Rusty Lugo**  
 Vice President  
 +1 801 947 8377  
 rusty.lugo@colliers.com

**Andrew Whitworth**  
 Associate  
 +1 580 3895  
 andrew.whitworth@colliers.com

This document has been prepared by Colliers International for advertising and general information only. Colliers International makes no guarantees, representations or warranties of any kind, expressed or implied, regarding the information including, but not limited to, warranties of content, accuracy and reliability. Any interested party should undertake their own inquiries as to the accuracy of the information. Colliers International excludes unequivocally all inferred or implied terms, conditions and warranties arising out of this document and excludes all liability for loss and damages arising there from. This publication is the copyrighted property of Colliers International and/or its licensor(s). ©2023. All rights reserved.