

FORMER PERSONAL CARE FACILITY

111 Epps Street
Gordon, GA 31031



Summary

Area Info

Photos

Aerial

Site Map



SALE PRICE: \$450,000.00

CONTACT

Patty Burns, CCIM, ALC
478-746-9421 Office
478-951-5100 Cell
patty@fickling.com

Trip Wilhoit, CCIM, ALC
478-746-9421 Office
478-960-4080 Cell
trip@fickling.com



577 Mulberry St, Suite 1100
Macon, GA 31201
478.746.9421 Office
<https://commercial.fickling.com>

This information is from resources deemed to be reliable and is subject to change without notice. No warranties or guarantees for accuracy are made by Fickling and Company.

PROPERTY INFORMATION

BUILDING

Property Address:	111 Epps Street Gordon, GA 31031
County:	Wilkinson
Taxes:	\$4,260 (2024 est.)
Year Built:	1969, renovated 2003
Building Size:	11,770 SF
Utilities:	All available
Parking:	Paved and ample, 30 spaces

SITE

Site Size:	2.34 Acres
Parcel ID:	G12 228A
Zoning:	Commercial

Demographics 2024	3 Miles	5 Miles	10 Miles
Population	3,197	4,175	13,055
Avg HH Income	\$60,667	\$63,961	\$74,043
Median Age	39.5	40.1	41.8

SALE PRICE: \$450,000.00

CONTACT

Patty Burns, CCIM, ALC
478-746-9421 Office
478-951-5100 Cell
patty@fickling.com

Trip Wilhoit, CCIM, ALC
478-746-9421 Office
478-960-4080 Cell
trip@fickling.com



577 Mulberry St, Suite 1100
Macon, GA 31201
478.746.9421 Office
<https://commercial.fickling.com>

FORMER PERSONAL CARE FACILITY

111 Epps Street
Gordon, GA 31031



Summary

Area Info

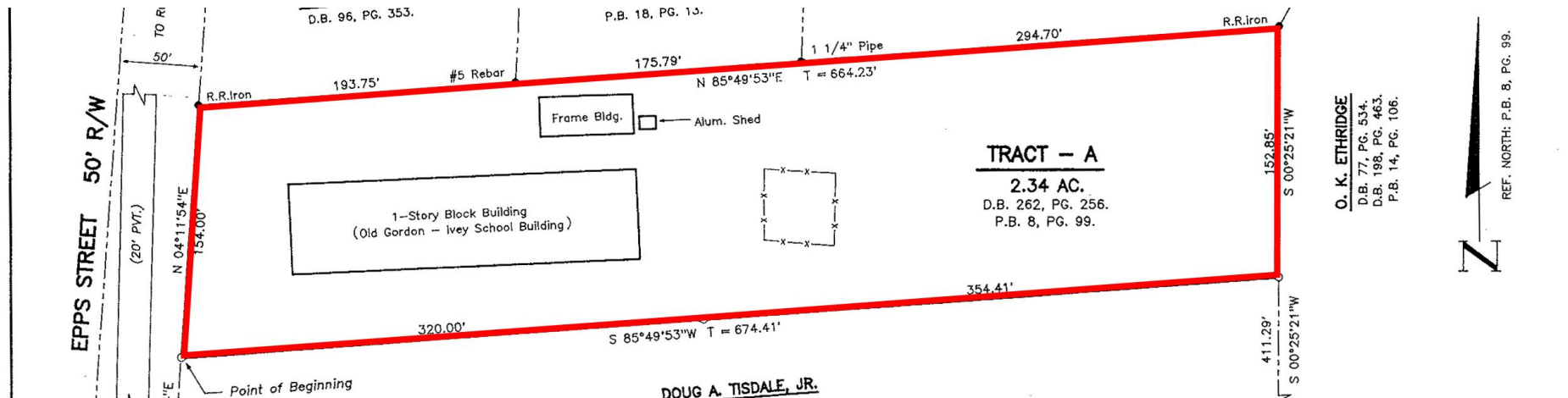
Photos

Aerial

Site Map

Property is an 11,700 SF former personal care home situated on 2.34 Acres in a nice country setting. Built in 1969 and renovated in 2003, space was approved for 24 residents, and is 1 story. All utilities are available to site, and there is ample paved parking available. Property comes with fully equipped kitchen and a fire sprinkler system. Ideal for a drug rehabilitation facility, day care, adult day care, and many other uses.

Convenient to the Fall Line Freeway (Highway 243), and downtown Gordon. Neighbors in the area include the City of Gordon Recreation Department, KaMin, Active Minerals, and Sellers Construction.



CONTACT

Patty Burns, CCIM, ALC
478-746-9421 Office
478-951-5100 Cell
patty@fickling.com

Trip Wilhoit, CCIM, ALC
478-746-9421 Office
478-960-4080 Cell
trip@fickling.com



577 Mulberry St, Suite 1100
Macon, GA 31201
478.746.9421 Office
<https://commercial.fickling.com>

FORMER PERSONAL CARE FACILITY

111 Epps Street
Gordon, GA 31031



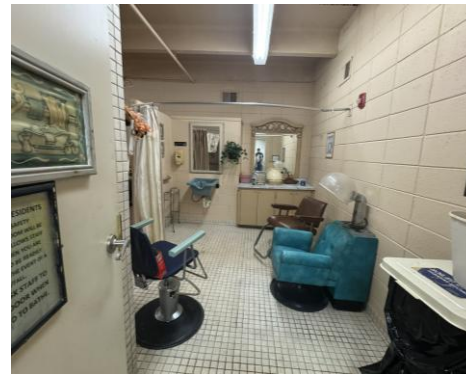
Summary

Area Info

Photos

Aerial

Site Map



CONTACT

Patty Burns, CCIM, ALC
478-746-9421 Office
478-951-5100 Cell
patty@fickling.com

Trip Wilhoit, CCIM, ALC
478-746-9421 Office
478-960-4080 Cell
trip@fickling.com



577 Mulberry St, Suite 1100
Macon, GA 31201
478.746.9421 Office
<https://commercial.fickling.com>

FORMER PERSONAL CARE FACILITY

111 Epps Street
Gordon, GA 31031



Summary

Area Info

Photos

Aerial

Site Map

AERIAL



CONTACT

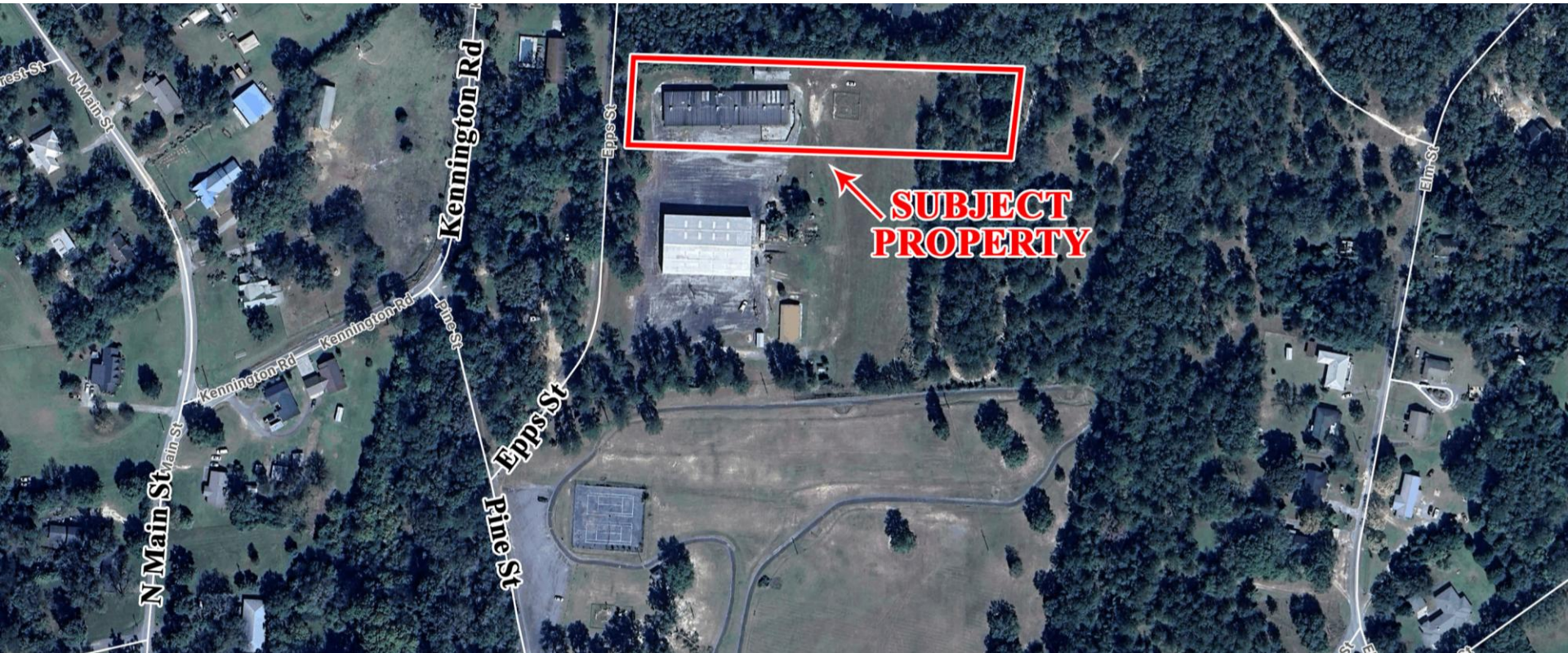
Patty Burns, CCIM, ALC
478-746-9421 Office
478-951-5100 Cell
patty@fickling.com

Trip Wilhoit, CCIM, ALC
478-746-9421 Office
478-960-4080 Cell
trip@fickling.com



577 Mulberry St, Suite 1100
Macon, GA 31201
478.746.9421 Office
<https://commercial.fickling.com>

SITE MAP



**SUBJECT
PROPERTY**

CONTACT

Patty Burns, CCIM, ALC
478-746-9421 Office
478-951-5100 Cell
patty@fickling.com

Trip Wilhoit, CCIM, ALC
478-746-9421 Office
478-960-4080 Cell
trip@fickling.com



577 Mulberry St, Suite 1100
Macon, GA 31201
478.746.9421 Office
<https://commercial.fickling.com>