



## 53<sup>rd</sup> & Hydraulic Land | Park City, KS

### Property Details:

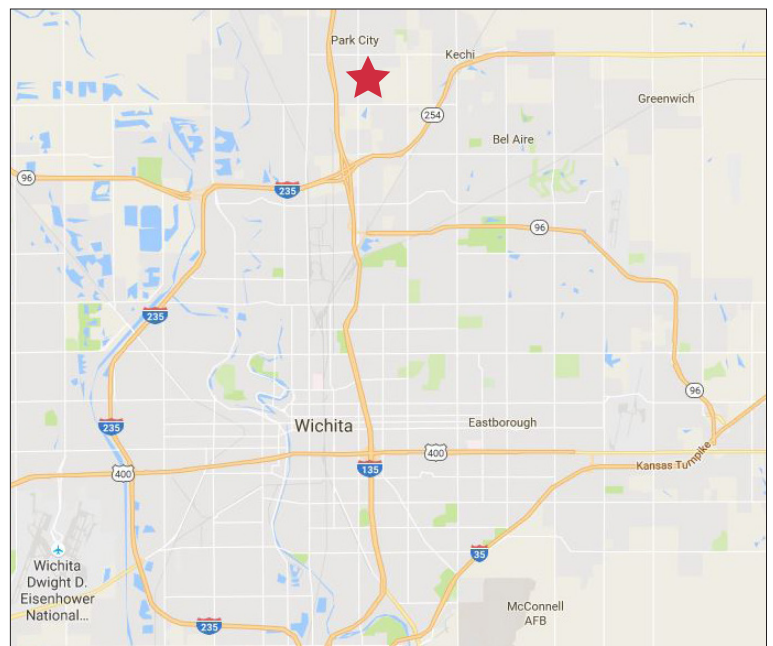
- 78.7 acres
- Currently zoned SF-20
- Utilities in immediate vicinity
- Immediate access to I-135
- Sale Price: \$1,200,000

### For more information:

**Grant Glasgow**

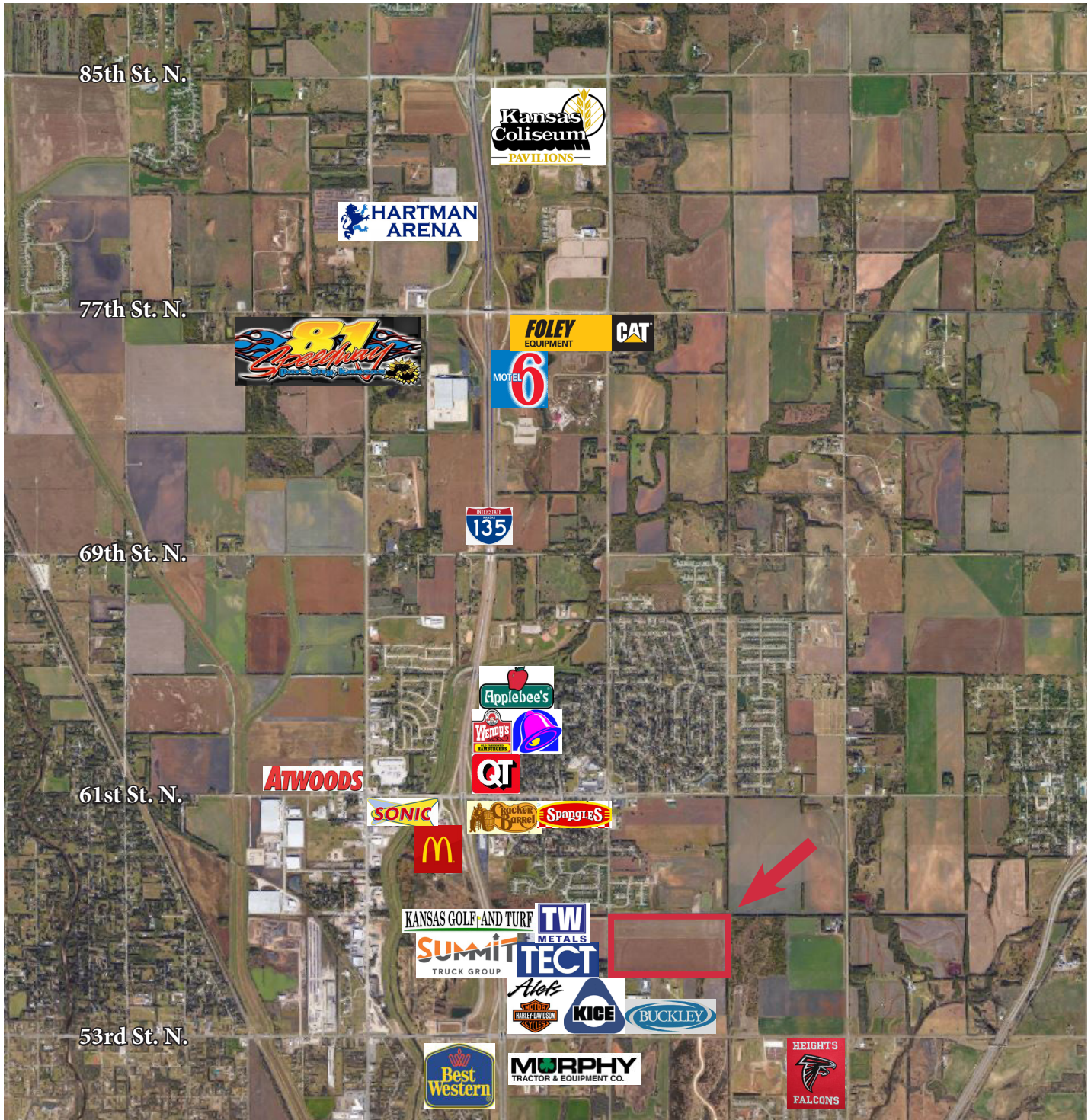
(316) 262-0000

GGlasgow@NAIMartens.com



For Sale  
Development Land  
Park City, Kansas

# NAI Martens



For more information:

**Grant Glasgow**

(316) 262-0000

GGlasgow@NAIMartens.com

NAI Martens  
435 South Broadway  
Wichita, KS 67202  
316.262.0000

Independently Owned and Operated. The information contained herein was obtained from sources believed reliable; however, NAI Martens Company makes no guarantees, warranties or representations as to the completeness or accuracy thereof. The presentation of this property is submitted subject to errors, omissions, change of price or conditions prior to sale or lease, or withdrawal without notice.