

140
DELANCEY ST
LOWER EAST SIDE



CITYMD



DELANCEY DISCOUNT

CLEANING SUPPLIES - KITCHEN-SCHOOL,PET,PARTY SUPPLIES
FURNITURE - UGAGE - HEALTH & BEAUTY-CELL PHONE ACCESSORIES-APPLIANCES

HOUSEHOLD-APPLIANCES-BED & BATH-HEALTH & BEAUTY



140 DELANCEY STREET

Between Norfolk & Suffolk St | Lower East Side

PROPERTY INFORMATION:

SIZE: 1,900 SF Ground Floor
+ Storage

FRONTAGE: 13'

CEILING HEIGHT: 10'

ASKING RENT: Upon Request

POSSESSION: Arranged

TRANSPORTATION: 

HIGHLIGHTS:

- Formerly *Dunkin' Donuts*
- Excellent visibility in the heart of the Lower East Side
- High foot traffic area
- Neighbors include: *Burger King, CityMD, Shake Shack, McDonald's, Walgreens, Regal Cinemas, T-Mobile, F45 fitness, Fabco Shoes, UBreakiFix, Total Wireless, Holiday Inn, Trader Joe's, Target, Metro by T-Mobile, & many more!*

FOR MORE INFORMATION, PLEASE CONTACT:

HUNTER LAZAN	JACK KHASKI	ALBERT MANOPLA
772.559.5195	917.355.0559	212.380.8369
HLazan@ksrny.com	JackK@ksrny.com	AManopla@ksrny.com

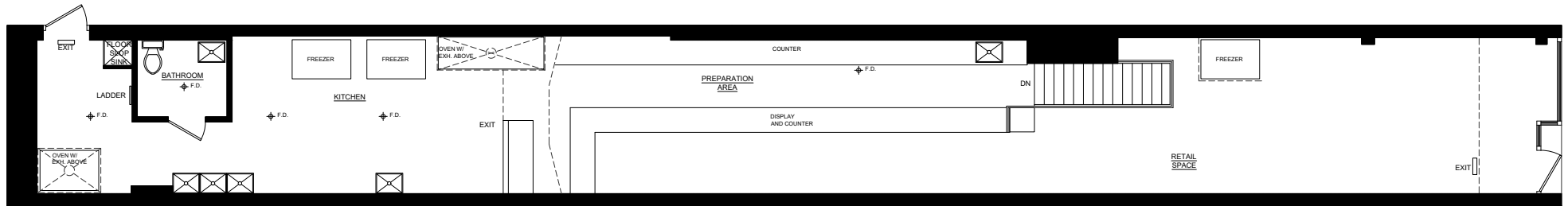


140 DELANCEY STREET

Between Norfolk & Suffolk St | Lower East Side

FLOOR PLANS:

GROUND FLOOR - 1,900 SF



STORAGE CELLAR

