

# Lehi Flex Building

61 W. State Street, Suite 102  
Lehi, UT 84043



## INDUSTRIAL | FOR LEASE

### PROPERTY INFORMATION

- > **Suite 102 – 7,000** total square feet
- > Open office area is 1,508 SF
- > GL Door 14'x14'
- > \$1.20 NNN (\$.20)
- > 400 amps 120/240 3-phase
- > Shared loading Dock
- > Available December 1, 2025



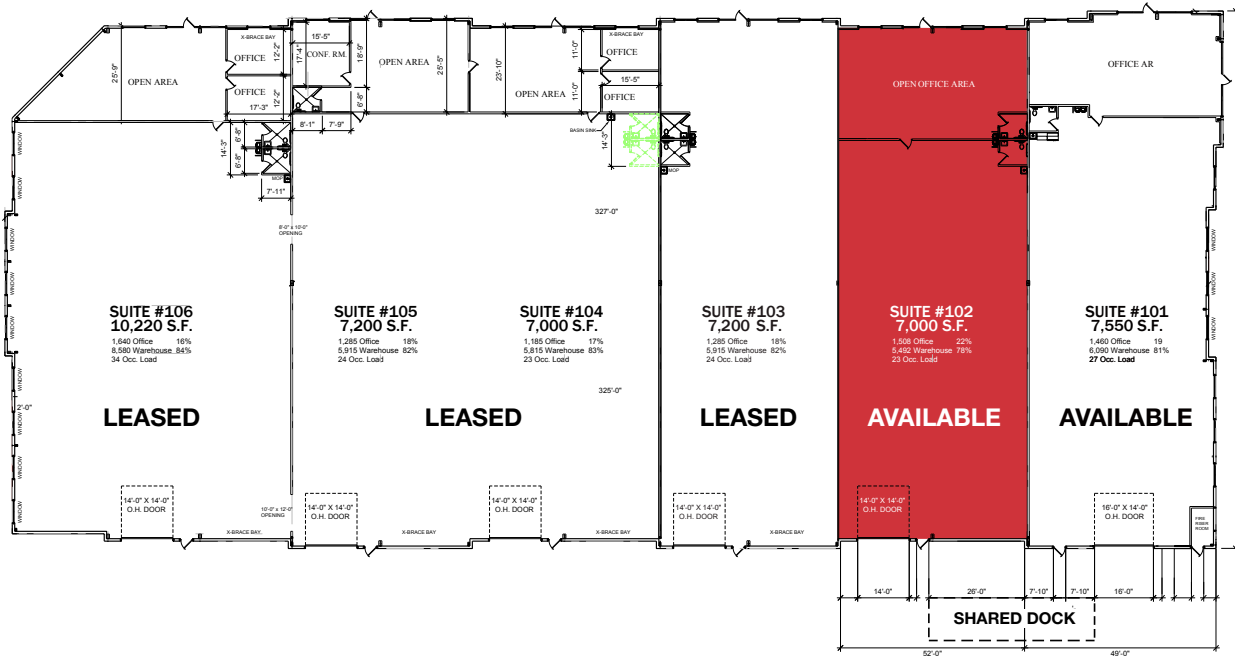
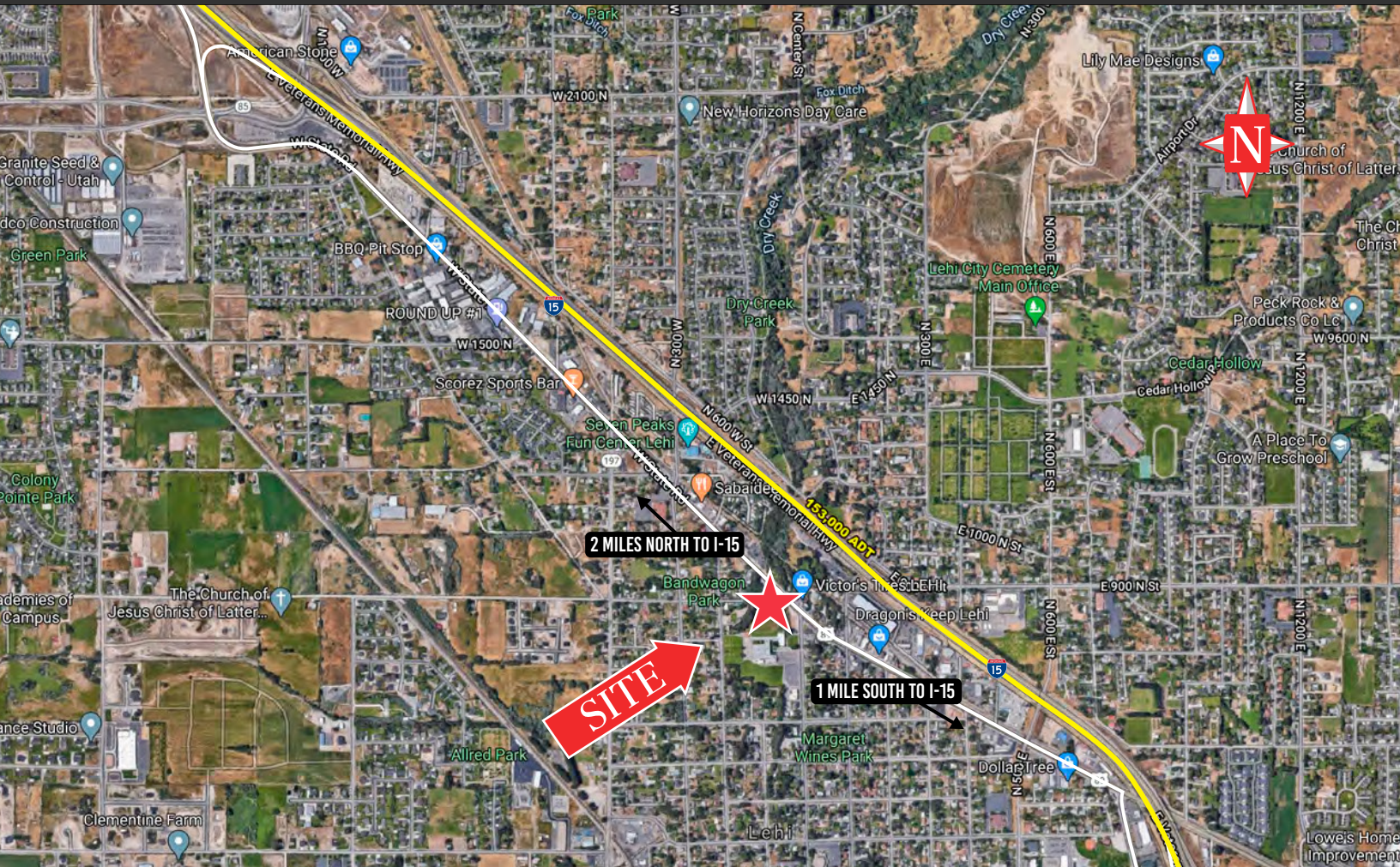
**NAIPremier**  
COMMERCIAL REAL ESTATE SERVICES, WORLDWIDE

801 255 3333 | [naipremier.com](http://naipremier.com)

**John Blatter**

c 801 822 6125

[jblatter@naipremier.com](mailto:jblatter@naipremier.com)



7455 Union Park Avenue Ste. A, Midvale, Utah 84047

801 255 3333 | [naipremier.com](http://naipremier.com)

NO WARRANTY OR REPRESENTATION, EXPRESS OR IMPLIED, IS MADE AS TO THE ACCURACY OF THE INFORMATION CONTAINED HEREIN, AND THE SAME IS SUBMITTED SUBJECT TO ERRORS, OMISSIONS, CHANGE OF PRICE, RENTAL OR OTHER CONDITIONS, PRIOR SALE, LEASE OR FINANCING, OR WITHDRAWAL WITHOUT NOTICE, AND OF ANY SPECIAL LISTING CONDITIONS IMPOSED BY OUR PRINCIPALS NO WARRANTIES OR REPRESENTATIONS ARE MADE AS TO THE CONDITION OF THE PROPERTY OR ANY HAZARDS CONTAINED THEREIN ARE ANY TO BE IMPLIED.