

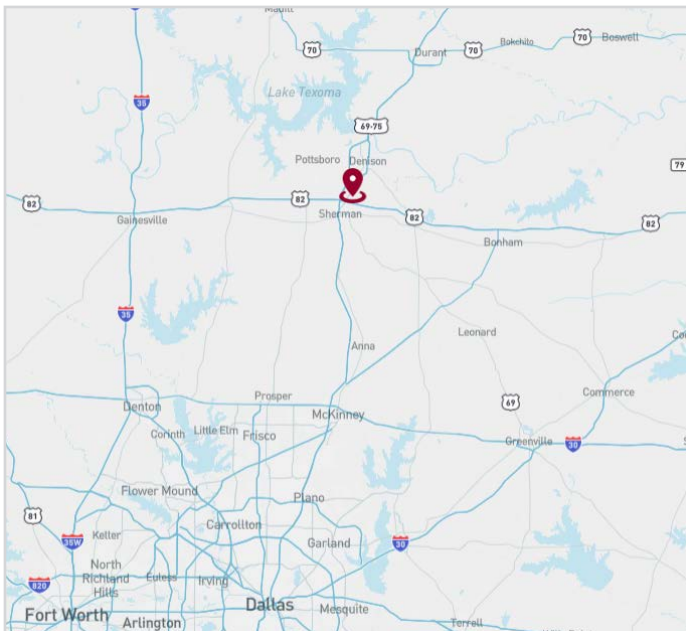
FOR LEASE

6,267 SF



5637 TEXOMA PARKWAY

Sherman, TX 75090



AVAILABILITY HIGHLIGHTS

- 6,267 Available Square Feet
- Ample Parking
- 2 Stories
- 100% HVAC
- Ideal for Restaurant
- Available Immediately

ECONOMIC DATA

Contact Broker for Lease Rate

FOR LEASING INFORMATION:

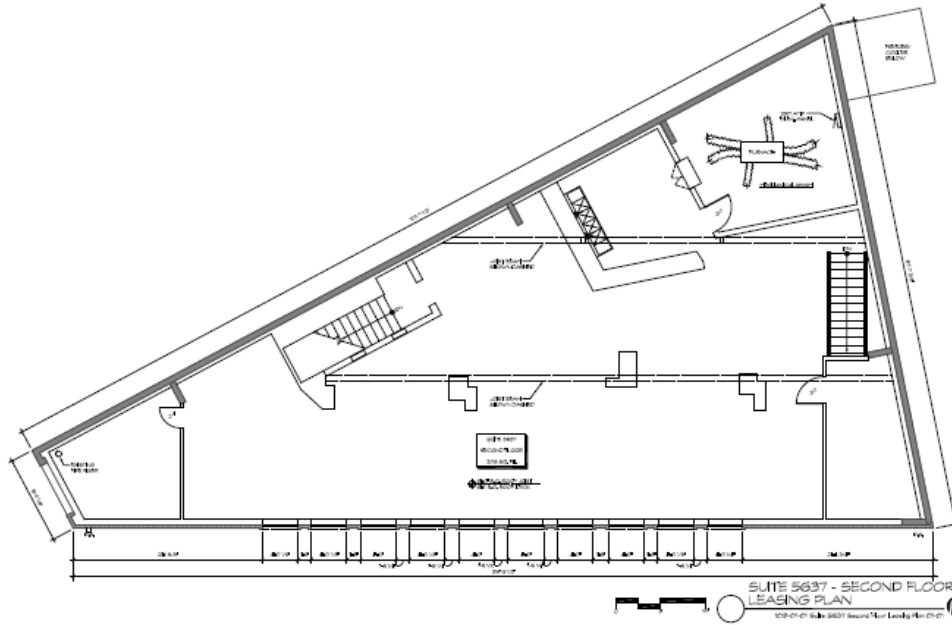
Phil Rosenfeld
Principal

prosenfeld@lee-associates.com
469.222.4159

6,267 SF

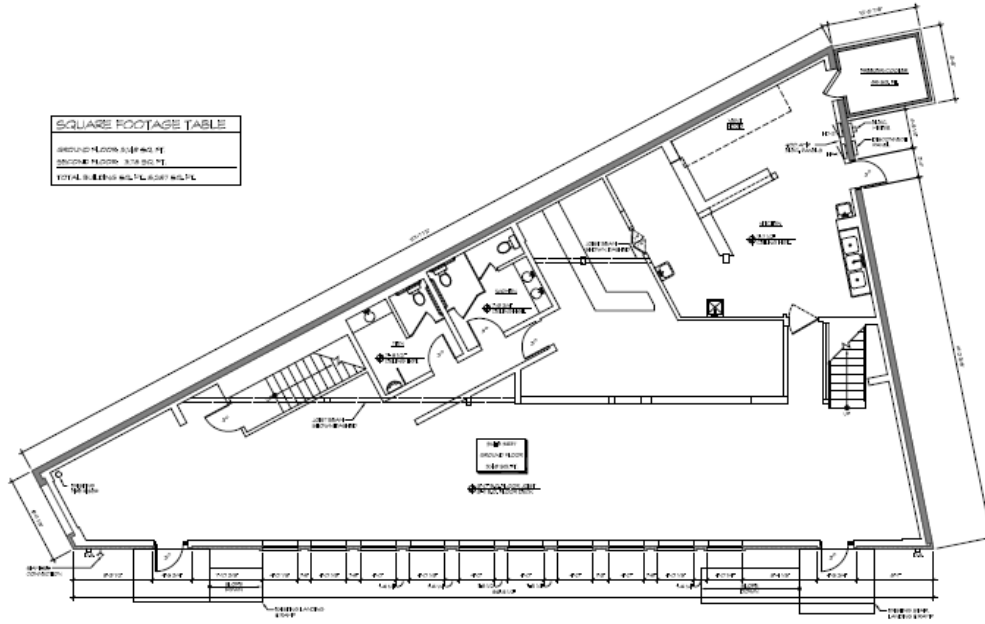
FOR LEASE

SITE PLAN



SUITE 5637 - SECOND FLOOR LEASING PLAN

SQUARE FOOTAGE TABLE	
GROUND FLOOR SUITE 5637	
SECOND FLOOR SUITE 5637	
TOTAL SUITE 5637	



SUITE 5637 - GROUND FLOOR LEASING PLAN

FOR LEASING INFORMATION:

Phil Rosenfeld
Principal
prosenfeld@lee-associates.com
469.222.4159

LEE & ASSOCIATES
COMMERCIAL REAL ESTATE SERVICES

leedallas.com