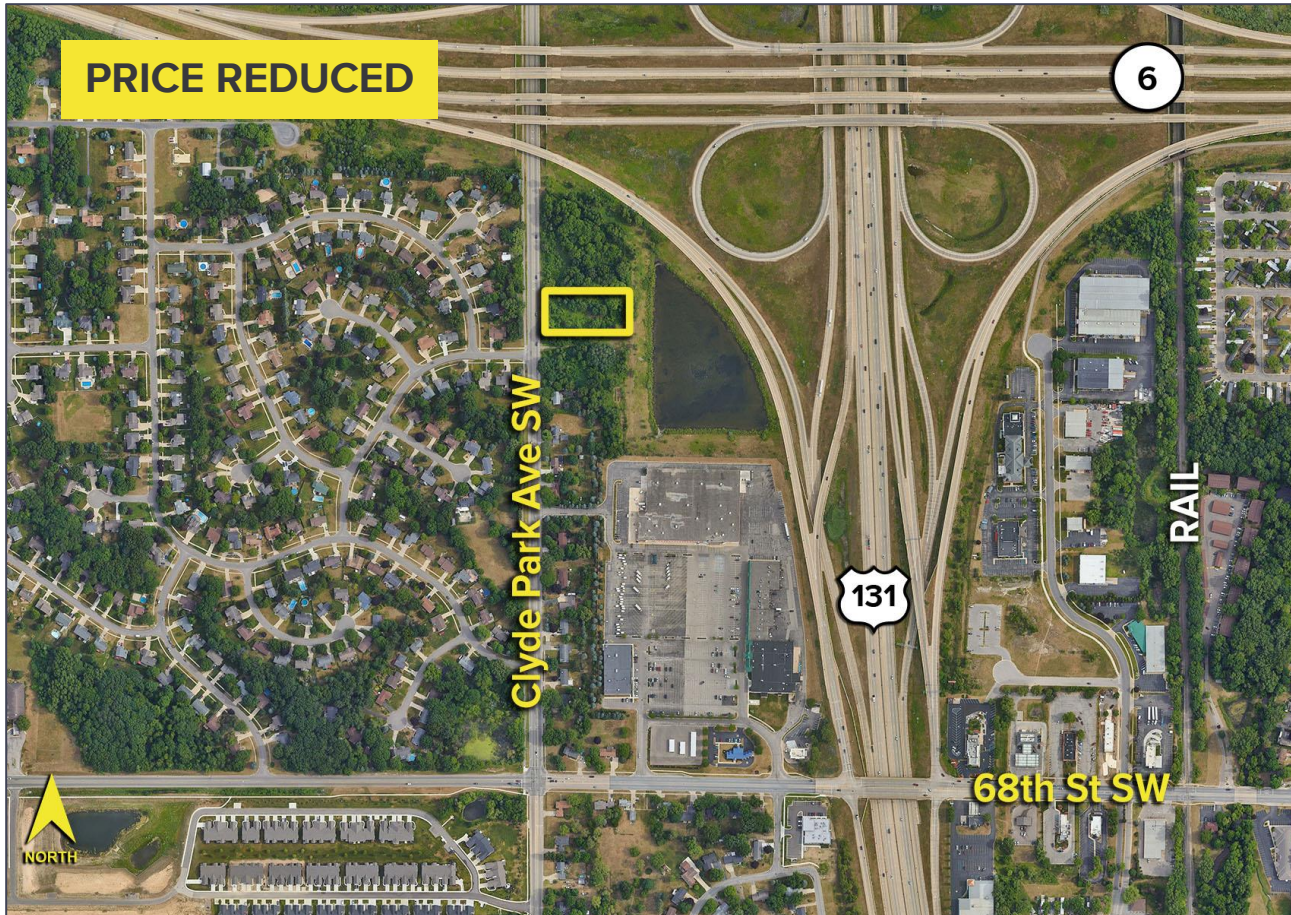


6510 CLYDE PARK AVENUE SW
BYRON TOWNSHIP, MICHIGAN

LAND FOR SALE
1.48 Acres Available

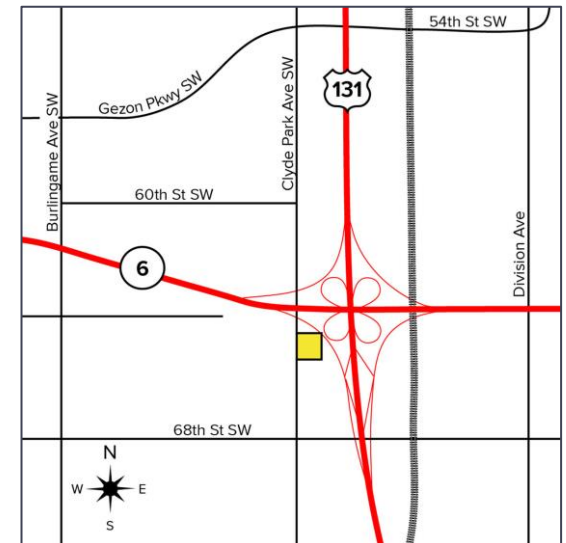


CLEAR HIGHWAY VISIBILITY



PROPERTY FEATURES

- Approximately 1.48 acres available
- Zoned OS – Office Service
- 180' of frontage on Clyde Park
- Sale Price: ~~\$590,000~~ \$499,000
- Price Per Acre: \$337,162/ac



For more information, please contact:

JOE RIZQALLAH
(616) 822 6310
jrizqallah@signatureassociates.com

SIGNATURE ASSOCIATES
1188 East Paris Ave SE, Suite 220
Grand Rapids, MI 49546
www.signatureassociateswm.com

6510 Clyde Park Avenue SW – Byron Center, Michigan

Land For Sale

1.48
Acres
AVAILABLE

OS Zoning

P = Permitted use by right S = Special Land Use (see Chapter 9)	B-1	B-2	O-S	D-1	Other Requirements
Accessory Uses					
Accessory building, accessory structure, and accessory use	P	P	P	P	Sec. 3.4.E
Outdoor Display and Sales Accessory to a Principal use, Permanent		S			Sec. 8.27
Outdoor storage accessory to a principal use		S ⁽¹⁾		S	Sec. 8.27
General office and general retail use accessory to an allowed industrial use				P	
General retail use accessory to an allowed general office use			S	P	
Solar energy collector system, building mounted	P	P	P	P	Sec. 8.35
Solar energy collector system, ground mounted	S	S	S	S	Sec. 8.35
Wind energy conversion system, accessory	P/S	P/S	P/S	P/S	Sec. 8.42
Office and Service Uses					
Appliance, small equipment, and personal item repair	P	P			
Day care, child care center	P	P	P	S	Sec. 8.13
General office and service	P	P	P		Sec. 8.14
General office and service with a drive-through	S	S	S	S	
Hospital			P		
Laundromat and dry cleaning pick-up service	P	P			
Medical or dental office or clinic		P	P		
Nursing home			P		Sec. 8.3
Veterinary hospital	P	P	S	P	Sec. 8.41
Retail Sales					
Construction and landscape supply, outdoor				P	
General retail	P	P			
Restaurants, Entertainment and Hospitality					
Bakery, less than 2,500 square feet	P	P			
Campground		S			Sec. 8.8
Club, private noncommercial	P	P	P		
Event and banquet center	P	P	P		
Hotel or motel	P	P			Sec. 8.21
Recreation facility, indoor (commercial)	P	P	S	P	Sec. 8.30
Recreation facility, outdoor (commercial)		P			Sec. 8.31
Restaurant, drive-in		S			
Restaurant, drive-through		S			Sec. 8.32
Restaurant	P	P	S		
Small distillery, micro-brewery, winery	P	P		P	Sec. 8.44
Tavern	P	P			
Theater, indoor		S			Sec. 8.30
Automotive Related Uses					
Parking as a principal land use	P			P	
Recreational vehicle sales and leasing		P		P	
Semi-truck and heavy truck sales and leasing		S ⁽¹⁾		P	Sec. 8.39
Truck stop		S ⁽¹⁾		S	
Vehicle sales and rental	S	P		P	Sec. 8.39

P = Permitted use by right S = Special Land Use (see Chapter 9)	B-1	B-2	O-S	D-1	Other Requirements
Vehicle Sales and Rental					
Vehicle sales and rental	S	P		P	Sec. 8.39
Vehicle repair, major				P	Sec. 8.37
Vehicle repair, minor	S	S		P	Sec. 8.38
Vehicle service station		S			Sec. 8.36
Vehicle wash establishment		S			Sec. 8.40
Industrial Uses					
Brewery, distillery, winery				P	
Contractor facility with outside storage of equipment and materials				S	Sec. 8.11
Contractor facility without outside storage of equipment and materials		S	S	P	
Dry cleaning and laundry plant				P	
Manufacturing, heavy				S	
Manufacturing, light				P	
Self-storage facility		S		P	Sec. 8.25
Outdoor storage as a principal land use				S	Sec. 8.27
Recycling and transfer station				S	
Sawmill or planing mill				S	
Warehousing and distribution				P	
Other Uses					
Adult entertainment uses				S	Sec. 8.2
Billboard as a principal land use		P		P	Sec. 12.4
Commercial kennel or animal shelter		S		S	Sec. 8.24
Composting facility				S	
Crematorium				P	
Equipment rental				P	
Funeral home and mortuary			S		Sec. 8.17
Impound operation				S	Sec. 8.23
Junkyard and salvage yard				S	Sec. 8.23
Mineral extraction	S	S	S	S	Sec. 8.26
Mixed uses: Residential use permitted along with an allowed non-residential use	S		S		
Places of worship	P	P	P	P	Sec. 8.28
Public building and utility facility		P	P		Sec. 8.29
Radio and television broadcasting station			P		
Sanitary landfill				S	Sec. 8.34
School, college or university	P	P	P		Sec. 8.47
School, college or university with dormitories, fraternity houses, and/or sorority houses	S	S	S		Sec. 8.47
School, private or parochial K-12					
School, trade or commercial, with classroom space	P	P	P	P	
School, trade or commercial, with warehouse or outdoor activities				P	
School, truck driving				P	
Wireless communications facility	P	P	P	P	Sec. 8.45
New antenna on existing structure or tower					
New towers and facilities	S	S	S	S	

For more information, please contact:

JOE RIZQALLAH
(616) 822 6310
jrizzqallah@signatureassociates.com

SIGNATURE ASSOCIATES
1188 East Paris Ave SE, Suite 220
Grand Rapids, MI 49546
www.signatureassociateswm.com