

ORLANDO, FLORIDA  
10,635 SF CLASS "A" RETAIL CENTER



# TURNKEY:

PLANS | ENGINEERING | APPROVALS  
PERMITS | PAID IMPACT FEES

INCLUDED

**NEW PRICE: \$1,998,000**





## CLASS A LOCATION

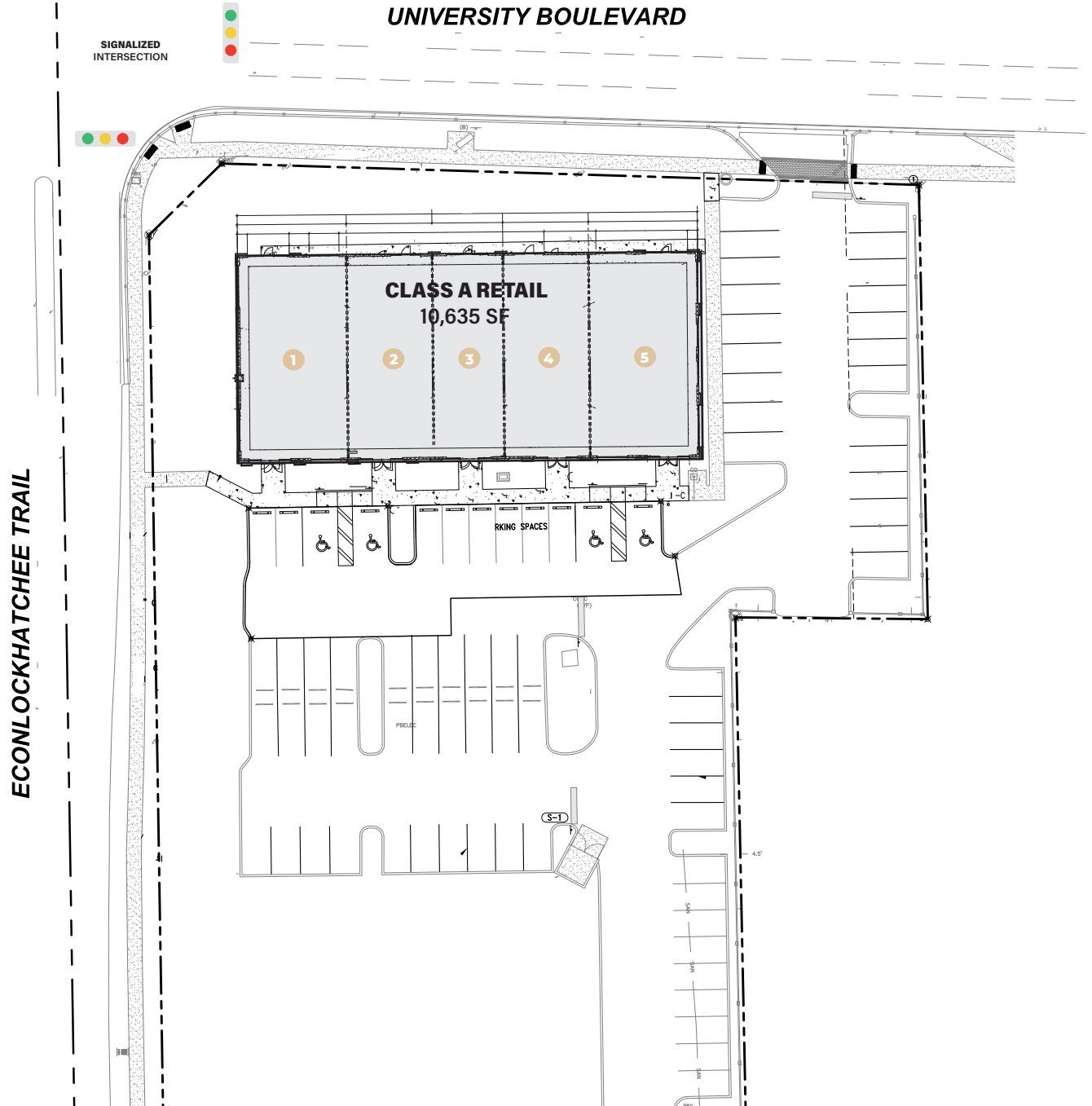
9030 UNIVERSITY BLVD. ORLANDO, FL 32817



### LOCATED FOR SUCCESS

Prime Signalized Corner

Conveniently Located near the 417 – UCF – Winter Park - Orlando





RETAIL | MEDICAL | OFFICE



## OPPORTUNITY OVERVIEW

- Exclusive Class A Orlando, FL location
- 9030 University Blvd. Orlando, FL 32817
- Prime signalized Intersection fronting University Blvd and Econ Trail
- Traffic Counts: University Blvd 37,000 AADT, Econ Trail 13,200 AADT, Central Florida Greenway 95,000
- Approved 10,635 SF Class A Retail Center
- Single user or up to 5 individual tenants
- Unique double storefront design to achieve highest exposure
- 5 Parking Spaces per 1,000 SF
- Fully Approved Project-Ready To Build
- Offering includes: Premium 10,635 SF building pad
- Full Architectural and Engineered Plans
- All County Approvals
- Building Permit
- Paid Impact Fees

## FULL TURNKEY PACKAGE

- PRICE: \$1,998,000

**UECON**  
MODERN RETAIL

# BUILDING LAYOUT

**SUITE 101**  
68.8 X 36.6 = 2,518 SF

**SUITE 102**  
68.8 X 28.8 = 1,981 SF

**SUITE 104**  
68.8 X 28.8 = 1,981 SF

1

2

3

4

5

**UNIT SIZES**  
CAN VARY DEPENDING ON USE

**SUITE 103**  
68.8 X 23.8 = 1,637 SF

**SUITE 105**  
68.8 X 36.6 = 2,518 SF

Disclaimer: The information provided in this brochure is for general guidance only. While efforts have been made to ensure accuracy, measurements, sizes, finishes, maps, and floor plans are approximate and subject to change. Any reliance on this information should be independently verified. We are not liable for inaccuracies or discrepancies.

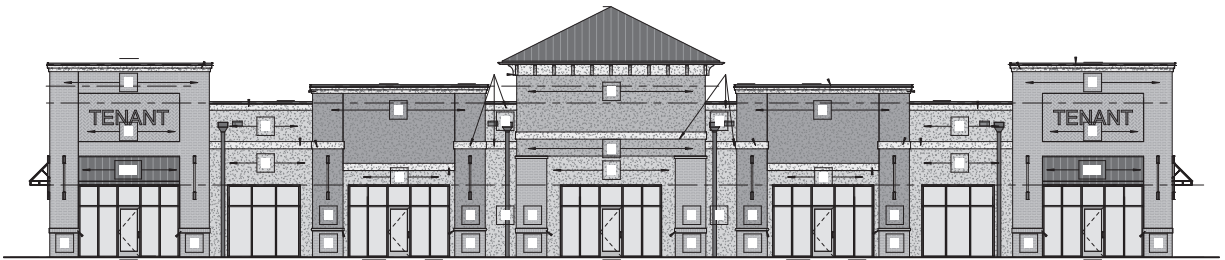
UECON



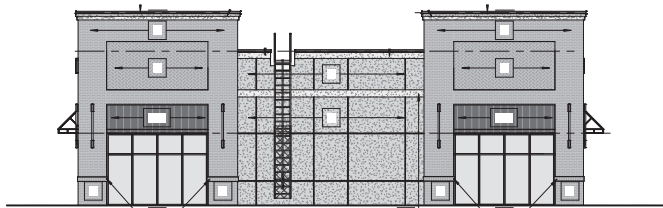
VIEW FROM PARKING



EAST SIDE



VIEW FROM UNIVERSITY



WEST SIDE



# TURNKEY

10,635 SF CLASS "A" RETAIL CENTER

IMMEDIATE BUILD



**Roger Soderstrom Jr.**

407-617-2830 • [roger@stirlingint.com](mailto:roger@stirlingint.com)

**John Kurtz**

407-864-9488 • [jkurtz@stirlingire.com](mailto:jkurtz@stirlingire.com)

STIRLING | INTERNATIONAL  
REAL ESTATE

Offering is subject to errors, omission, prior sale or withdrawal without notice. University Econ units information, including sizes, pricing, property features, terms, availability and amenities, are subject to change, prior sale or withdrawal at any time without notice or obligation. Drawings, photographs, renderings, video, scale models, square footages, floor plans, elevations, features, colors and sizes are approximate for presentation purposes only and may vary from the homes as built. Home prices refer to the base price of the house and do not include options or premiums, unless otherwise indicated for a specific home. Nothing printed or on the website should be construed as legal, accounting or tax advice.