



## Ellsworth Avenue Center

### For Lease

**Paul Horan**

Principal | Pittsburgh  
Office Brokerage  
+1 412 515 8525  
paul.horan@colliers.com

**Cody Sharik**

Associate | Pittsburgh  
Office Brokerage  
+1 412 515 8531  
cody.sharik@colliers.com

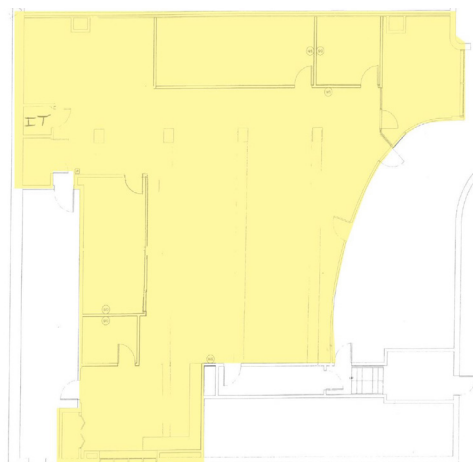
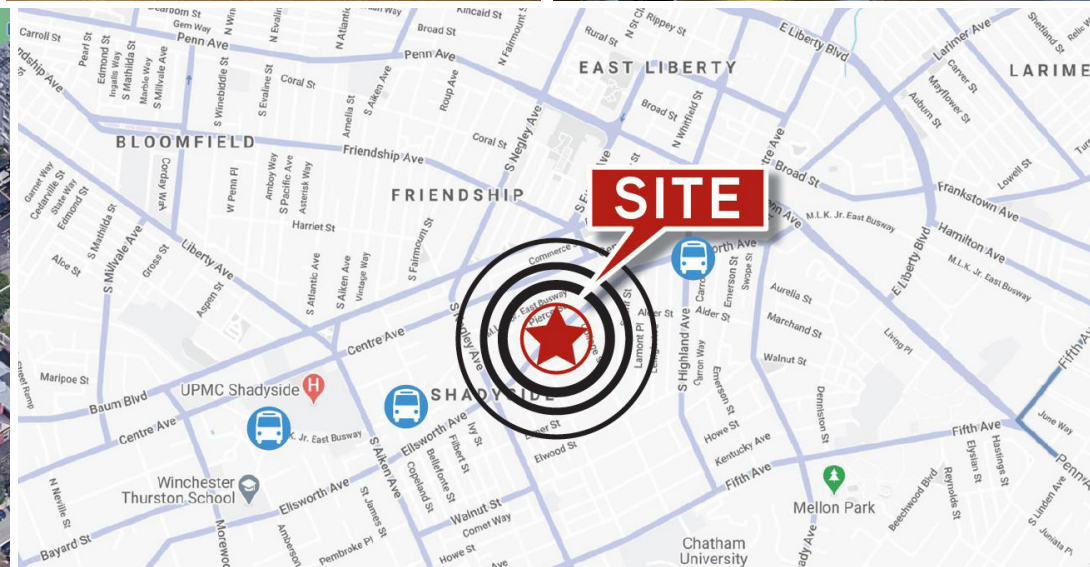
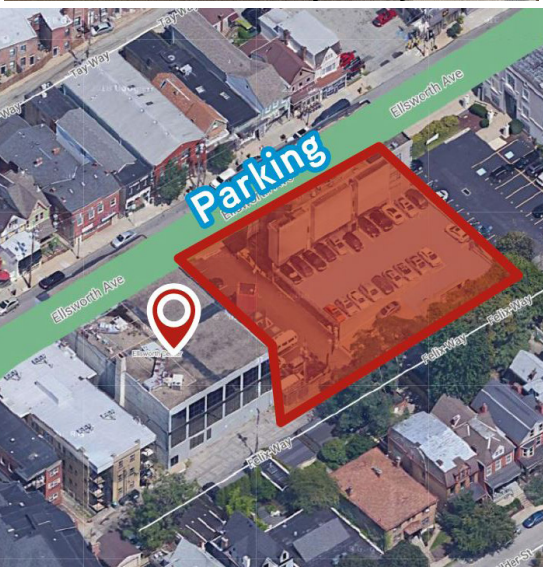
---

525 William Penn Place  
Suite 3510  
Pittsburgh, PA 15219  
P: +1 412 321 4200  
F: +1 412 321 4400  
colliers.com/pittsburgh

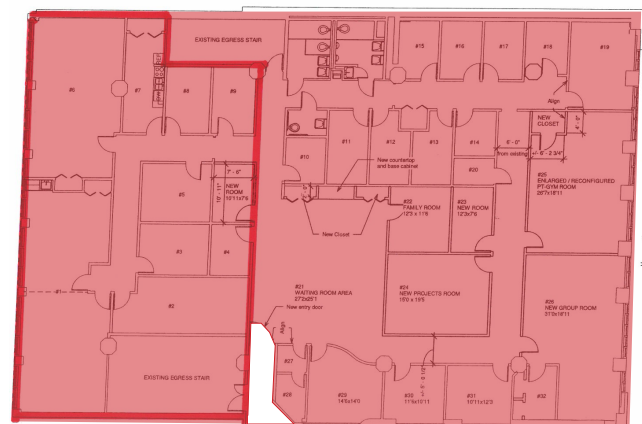
## 5830 Ellsworth Avenue Pittsburgh, PA 15232

- 1st floor space with main lobby exposure - 4,200 SF suite subdividable to 1,500 SF
- 2nd floor office/medical suite - 8,993 SF (Entire Floor)
- Main lobby of building recently renovated
- Efficient open design with loft ceilings
- Perfect for office or medical use
- Abundant on-site surface and garage parking (with attendant) available as well as nearby street parking
- Located in the heart of Shadyside near restaurants & shopping
- Steps away from Martin Luther King Jr. East Busway, permitting access to Downtown in minutes
- Property manager on site





1st Floor - 4,200 RSF



2nd Floor - 8,993 RSF