



Industrial Development Site

Offering Summary

Sale Price:	Contact Broker
Lot Size:	13.2 Acres
Zoning:	Heavy Industrial

- Prime Truck Parking Terminal Site with close Proximity to the ATL Airport
- Sewer access inside of parcel
- 0.2 miles to I-675
- 0.3 miles to Moreland Avenue
- 6.6 miles to I-75 S
- 11 miles to I-20
- 13 miles to I-85

Get more information

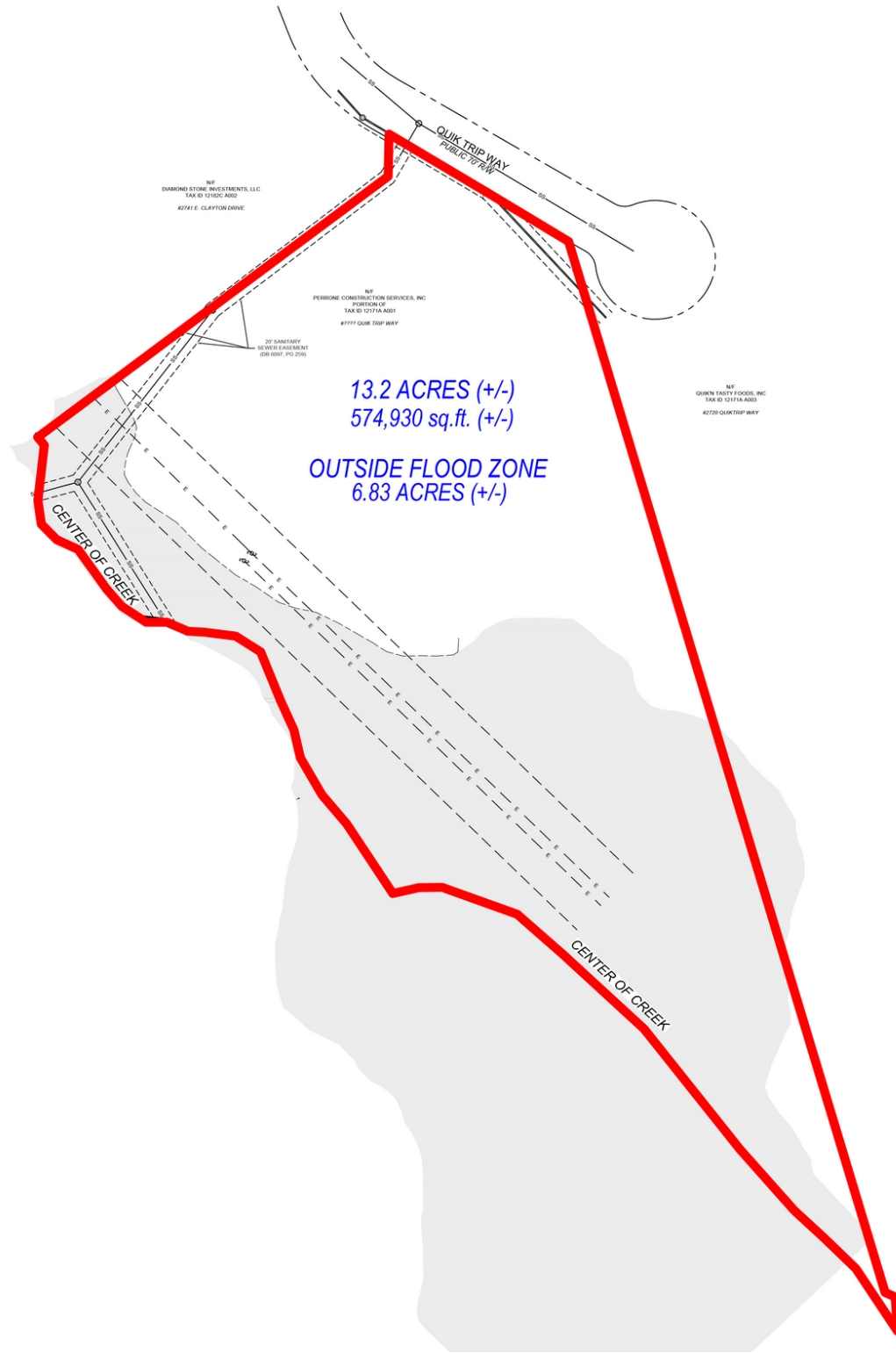
J. Leslie "Les" Johnson, CCIM SIOR

Senior Vice President

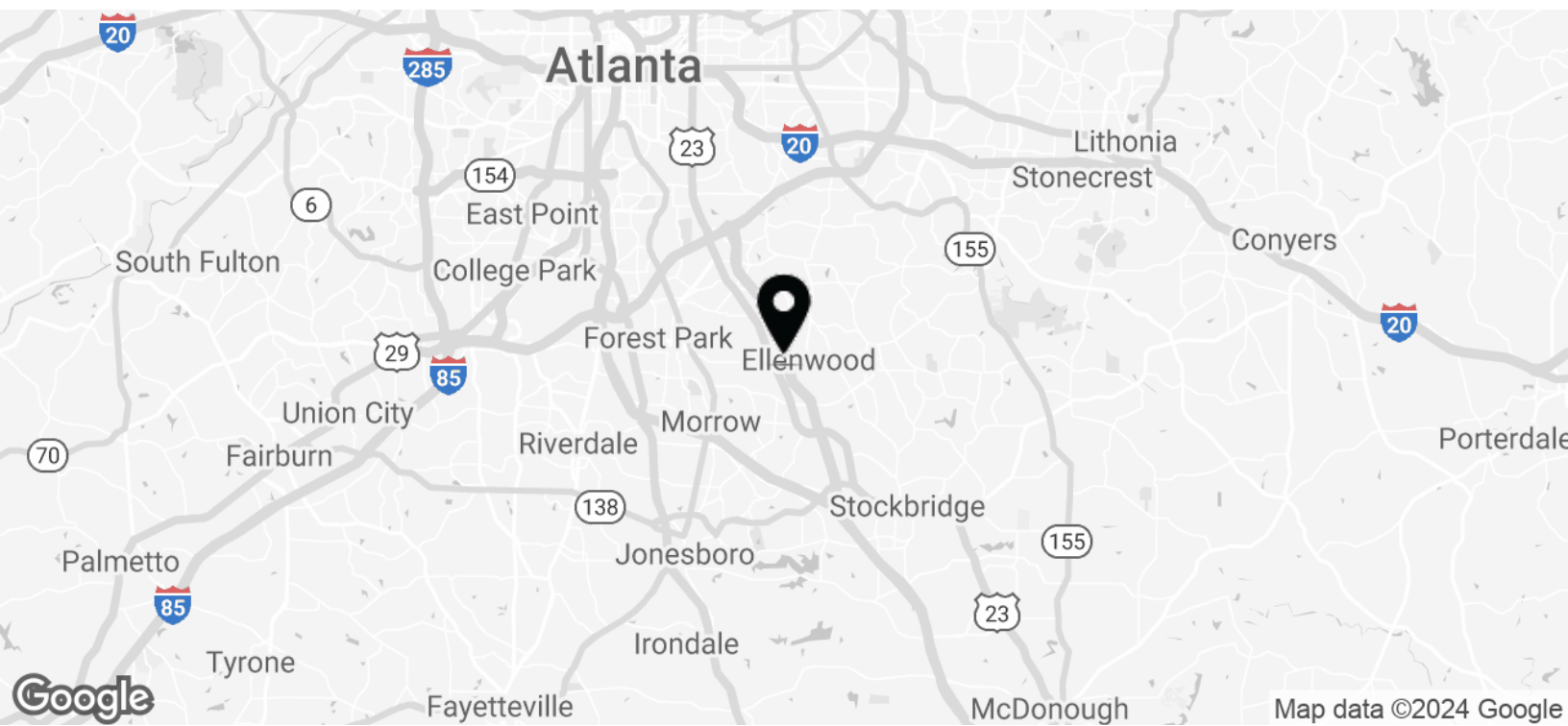
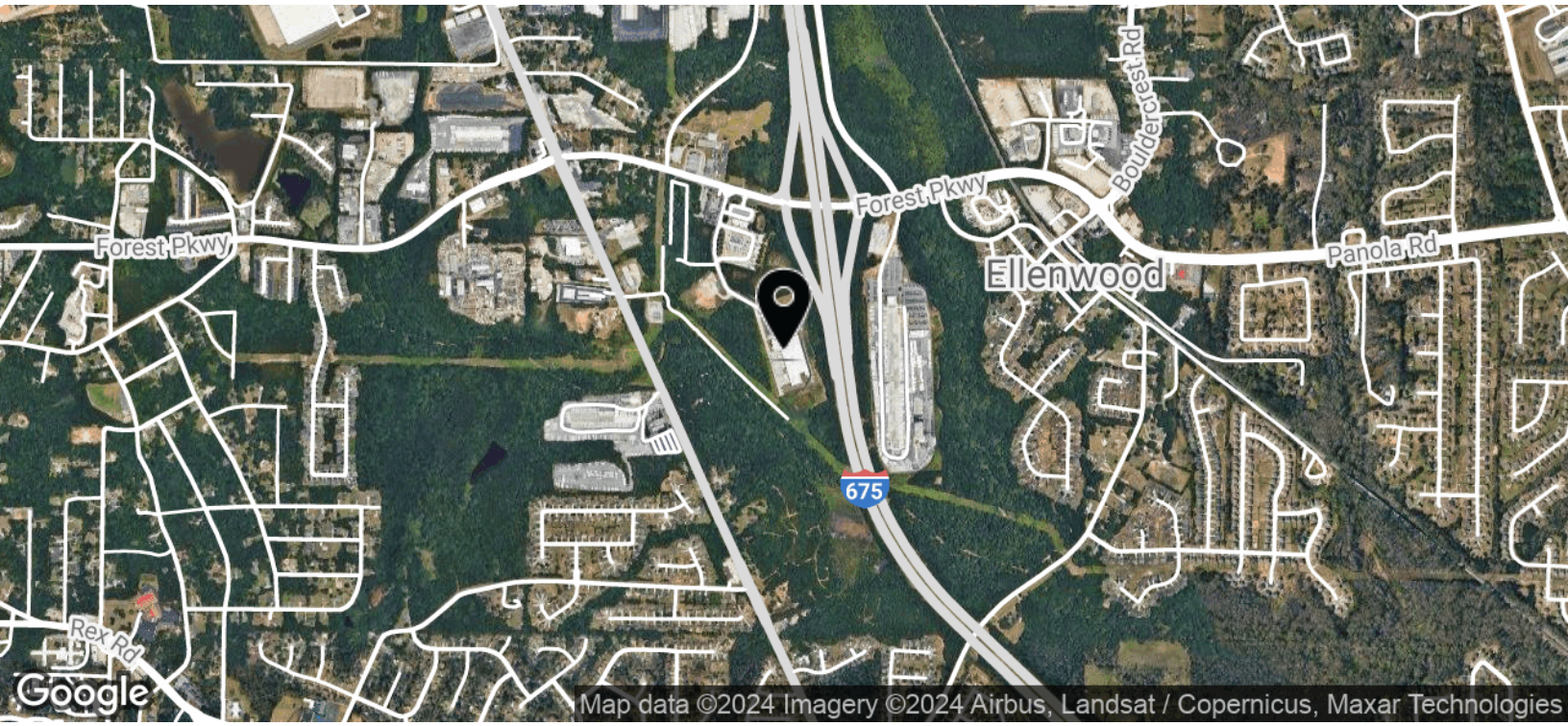
D 770 532 9911

C 770 598 3678

leslie.johnson@avisonyoung.com



J. Leslie "Les" Johnson, CCIM SIOR
Senior Vice President
D 770 532 9911
C 770 598 3678
leslie.johnson@avisonyoung.com



J. Leslie "Les" Johnson, CCIM SIOR

Senior Vice President

D 770 532 9911

C 770 598 3678

leslie.johnson@avisonyoung.com

**AVISON
YOUNG**

Avison Young - Gainesville | 425 Spring Street SE, Suite 200 | Gainesville, GA 30501

© 2024, Avison Young - Gainesville. Information contained herein was obtained from sources deemed reliable and, while thought to be correct, have not been verified.

Avison Young - Gainesville does not guarantee the accuracy or completeness of the information presented, nor assumes any responsibility or liability for any errors or omissions therein.

J. Leslie "Les" Johnson, CCIM SIOR

Senior Vice President

D 770 532 9911

C 770 598 3678

leslie.johnson@avisonyoung.com

Let's talk.

Avison Young - Gainesville
425 Spring Street SE, Suite 200 | Gainesville, GA 30501

© 2024. Avison Young - Gainesville. Information contained herein was obtained from sources deemed reliable and, while thought to be correct, have not been verified. Avison Young - Gainesville does not guarantee the accuracy or completeness of the information presented, nor assumes any responsibility or liability for any errors or omissions therein.

**AVISON
YOUNG**
