

# FOR SALE



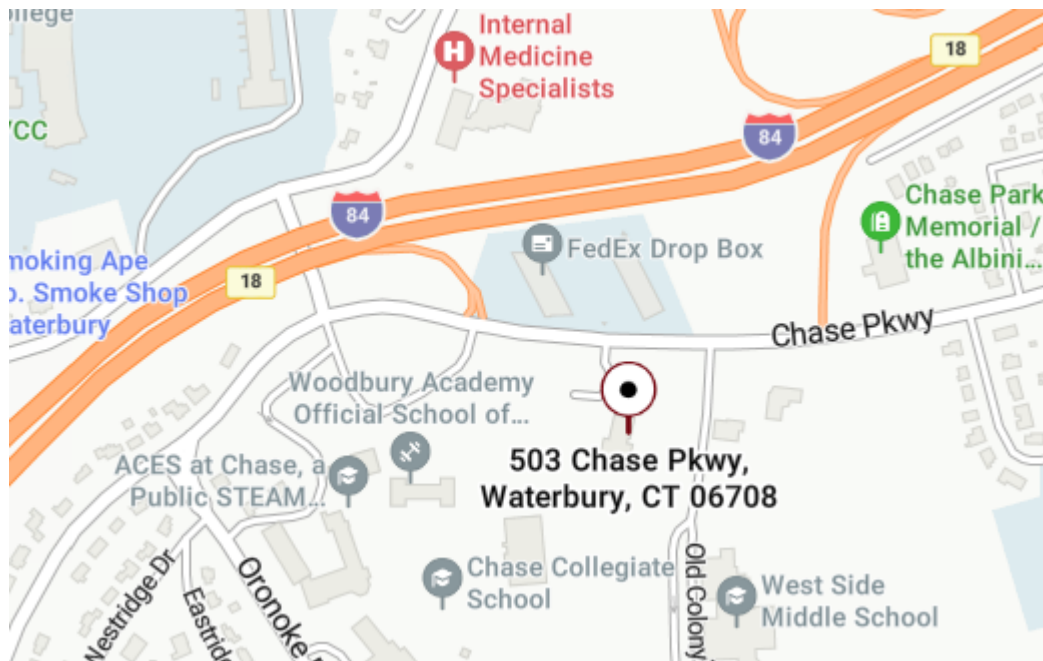
**503 Chase Parkway  
Waterbury, CT 06708**

**9,426 +/- S/F**  
**Former Church - Beautifully Designed**  
**Adaptable for a Wide Range of Uses**  
**(Professional Offices, Educational Facilities, etc.)**  
**Spacious Rooms, Private Offices, Expansive Windows**  
**Ample On Site Parking**  
~~**Offered at \$1,200,000.00**~~  
**Price Drop!! \$999,995.00**



# PROPERTY DATA FORM

<b>PROPERTY ADDRESS</b>		503 Chase Parkway	
<b>CITY, STATE</b>		Waterbury, CT 06708	
<b>BUILDING INFO</b>		<b>MECHANICAL EQUIP.</b>	
Total S/F	9,426 +/-	Air Conditioning	None
Number of Floors	1	Sprinkler / Type	No
Available S/F	9,426 +/-	Type of Heat	Electric/Baseboard
Office Space	6	<b>OTHER</b>	
		Acres	2.83
		Zoning	RS
Ceiling Height	9' & 20'	Parking	Large Parking Lot
Ext. Construction	Brick	State Route / Distance To.	I-84 Immediate
Roof	Flat-Rubber/Asphalt Shingles	<b>TAXES</b>	
Date Built	1972	Assessment	\$845,600.00
<b>UTILITIES</b>		Appraisal	\$1,208,000.00
Sewer	City	Mill Rate	49.44
Water	City	Taxes	\$41,806.64
Gas/Oil	None	<b>TERMS</b>	
Electrical	Eversource	Sale	\$999,995.00
Amps-Volts-Phase	600 Amps		



All information furnished is from sources deemed reliable and is submitted subject to errors, omissions, change of other terms of conditions, prior sale, lease or financing or withdrawal-all without notice. No representation is made or implied by Godin Property Brokers, LLC or its associates as to the accuracy of the information submitted herein.









328	348	364
332	344	360
336	340	356
340	336	352
344	332	348
348	328	344

Map #  
**364**

City of Waterbury, Connecticut  
Property Assessment Map

This map is for informational purposes only. It is not intended to be used for legal purposes. The City of Waterbury is not responsible for any errors or omissions on this map. The City of Waterbury is not responsible for any damages or losses resulting from the use of this map.

0 50 100 150 200  
1 INCH = 25 FEET

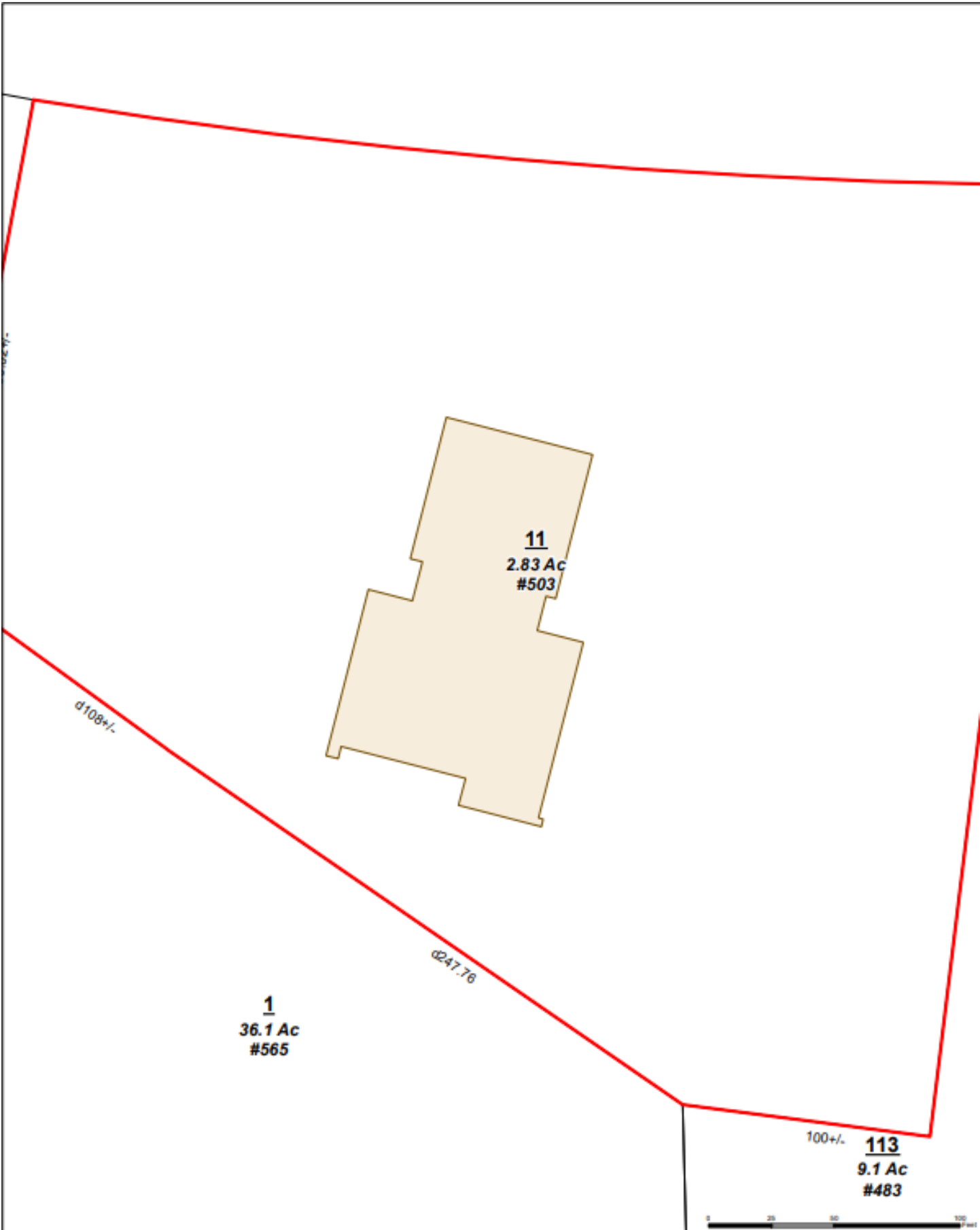
City of Waterbury  
Assessor's Department

Map #  
**364**

City of Waterbury  
Assessor's Department

Map #  
**364**

City of Waterbury  
Assessor's Department



**City of Waterbury**  
Public Works Department

MBL: **0364-0050-0011**  
ADDRESS: **503 CHASE PARKWAY**

This map is for informational purposes only and has not been prepared for, or suitable for legal, engineering, or surveying purposes. Users of this information should review or consult the primary data and information sources to verify the usability of the information. The City of Waterbury makes no warranties, express or implied, as to the use of the information obtained herein.

