



For Lease

# Flex/Industrial Space

## Andrew Robbins

Senior Associate  
+1 857 366 1891  
andrew.robbs@colliers.com

Colliers

210 Commerce Way, Suite 350  
Portsmouth, NH 03801  
+1 603 433 7100  
colliersnh.com

## 4 Bud Way Nashua, NH

This single story versatile building is well suited for a variety of uses such as R&D, warehouse, light assembly, and even a direct office environment.

Ideally located just off Route 101A (Amherst Street) and within half mile of Exit 7 off Route 3/Everett Turnpike. This building is designed as a multiple bay flex building, with most units having their own tail board loading dock or drive-in door.

4 Bud Way is in a prime industrial/commercial area that is close to the airport, major transportation arteries, and all of Amherst Street's amenities, which include retail services, fitness centers, hotels, and restaurants.

Information herein has been obtained from sources deemed reliable, however its accuracy cannot be guaranteed by Colliers International | New Hampshire & Maine. The user is required to conduct their own due diligence and verification. Colliers International | New Hampshire & Maine is independently owned and operated.

Accelerating success.



For Lease



## Specifications

Address:	4 Bud Way
Location:	Nashua, NH 03063
Building Type:	Office/flex
Year Built:	1978
Total Building SF:	45,650±
Available SF:	Unit 16-20: 10,500±
Loading Docks:	Unit 16-20: 2
Clear Height:	13' clear; 16' to deck
Power:	3 phase
Utilities:	Municipal water & sewer Natural gas
Zoning:	Airport Industrial
Parking:	Ample
2024 NNN Expenses:	\$4.50 PSF
Lease Rate:	\$11.75 NNN



### Contact us:

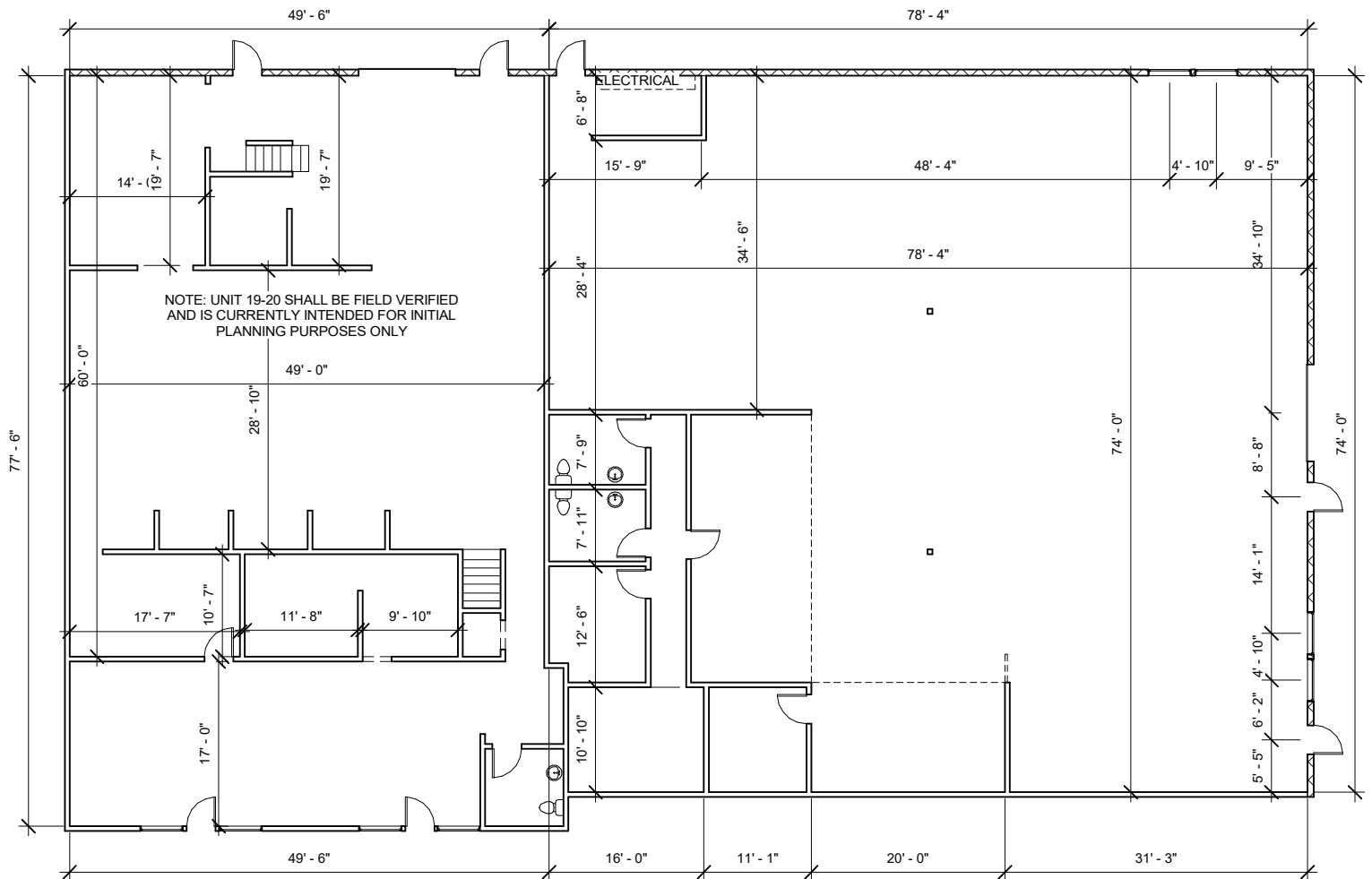
#### Andrew Robbins

Senior Associate  
+1 857 366 1891  
andrew.robbs@colliers.com



210 Commerce Way, Suite 350, Portsmouth, NH 03801  
+1 603 433 7100 | colliersnh.com

# Unit 16-20 Floor Plan



4 BUD WAY  
NASHUA, NH 03063

[illegible]

EXISTING FLOOR PLAN 16-20		
Project number	Project Number	16-20
Date	11.02.2023	
Drawn by	MJH	
Checked by	BK	
		Scale 3/32" = 1'-0"