

FOR SALE

CORNERSTONE SQUARE

COMMERCIAL — Ruckersville, Greene County, VA

The Gateway Community

FRONTING ON US 29 NORTH AND VSH 607



**EXCELLENT LOCATION FOR RETAIL—B-3
Multi-Use General Commercial Zoning**

ACCESS TO PUBLIC WATER & SEWER

LEGEND

- Iron Pin Found
- Iron Pin Set
- Sewer Manhole
- Gravel Area
- Utility Pole
- Over Head Electrical
- Underground Fiber Optic
- Underground Electric Line
- Sanitary Sewer Line

Lot #3 1.413+ Acres

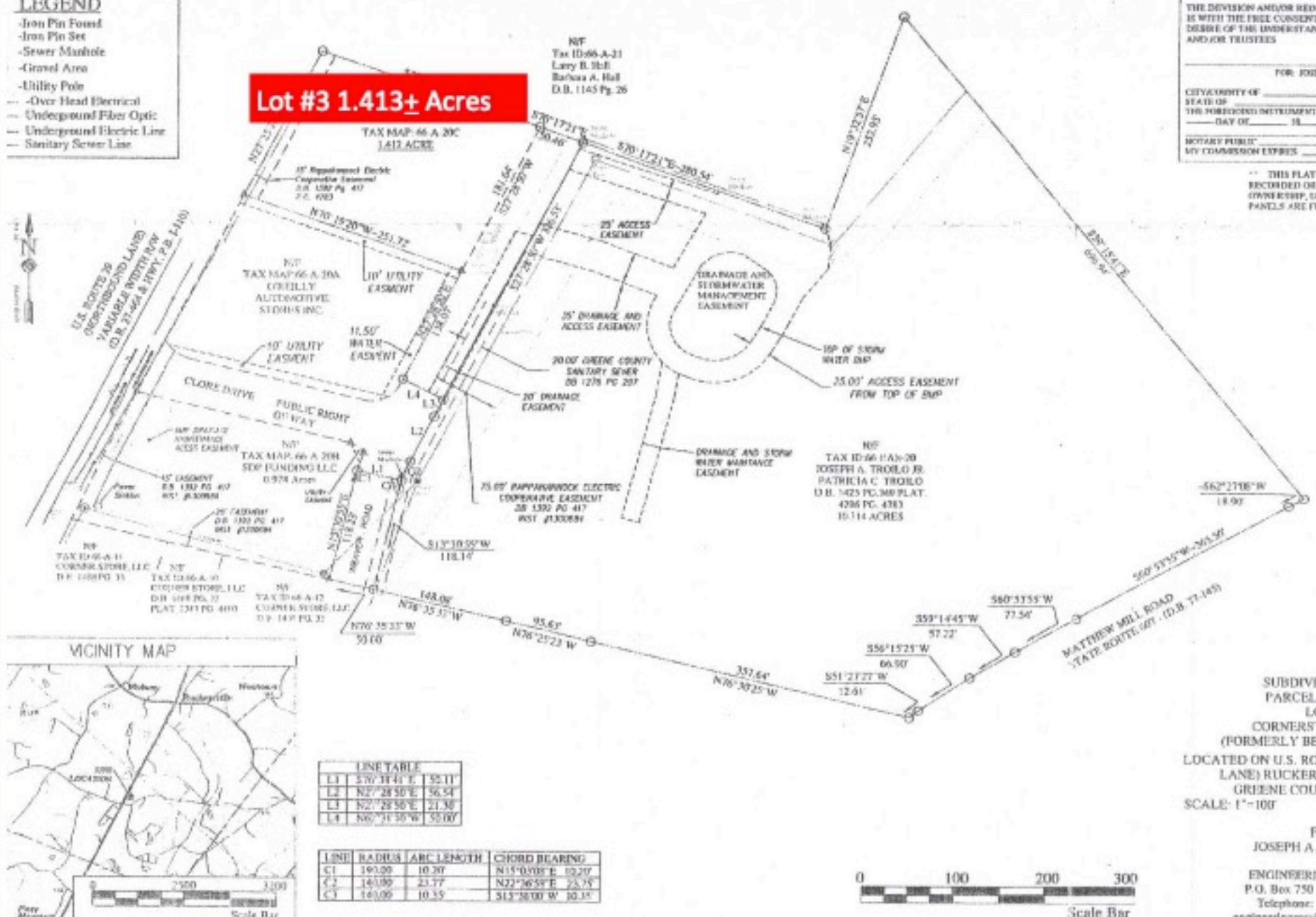
THE DIVISION AND/OR REDIVISION IS WITH THE FREE CONSENT AND DESIRE OF THE UNDERSTANDING AND/OR TRUSTEES

FOR: JOSEPH A. TROLO JR.

CITY/COUNTY OF _____
 STATE OF _____
 THE FOREGOING INSTRUMENT WAS _____ DAY OF _____, 2011, BY _____

NOTARY PUBLIC _____
 MY COMMISSION EXPIRES _____

THIS PLAT IS IN RECORDED OR UNRECORDED OWNERSHIP, UNLESS PARTS ARE FULLY



VDOT Traffic Count 37,000+ Vehicles Per Day

Average Household Income Within a 10 Mile Radius is \$74,000

PUBLIC WATER & SEWER ~ HIGH SPEED LAND LINES ON SITE

SUPERIOR LOCATION AND CONVENIENT TRAFFIC ACCESS

DIRECTIONS: From Charlottesville US 29 North to Just Past the Intersection of US 29 and VSH 607. Property on Right—7106 Seminole Trail, Greene County, Virginia. Sign Up.